



FS Performance Engineering
Jeep Liberty (2008-2012) Cat Guard Installation Instructions
Professional Installation Is Recommended

Tools Needed:

- 1/4" Socket for Security Bits
- 7/16" Socket
- 17mm Socket
- Ratchet Wrench
- Adjustable Wrench (possibly)
- Drill
- 17/32" Drill Bit (not required, but will help a lot)
- Rivnut Insert Tool with a 5/16"-18 mandrel (a heavy duty one is necessary)
- Helper
- Dremel Tool (absolutely necessary) with tip to shave down steel

What's Supplied:

Parts:

- (1) Jeep Liberty 08-12 Cat Guard with preinstalled 1/4"-20 rivnuts for oil drain cover
- (1) Oil Drain Cover

Hardware:

- (7) 5/16"-18 Rivnuts (1 is extra)
- (4) 5/16"-18 x 1" Security Bolts
- (2) 5/16"-18 x 2" Security Bolts
- (1) Security Bit (3/16")
- (2) 20mm Nylon Spacers

- (2) M10-1.5 x 25mm Security Bolts
- (1) Security Bit (7/32")

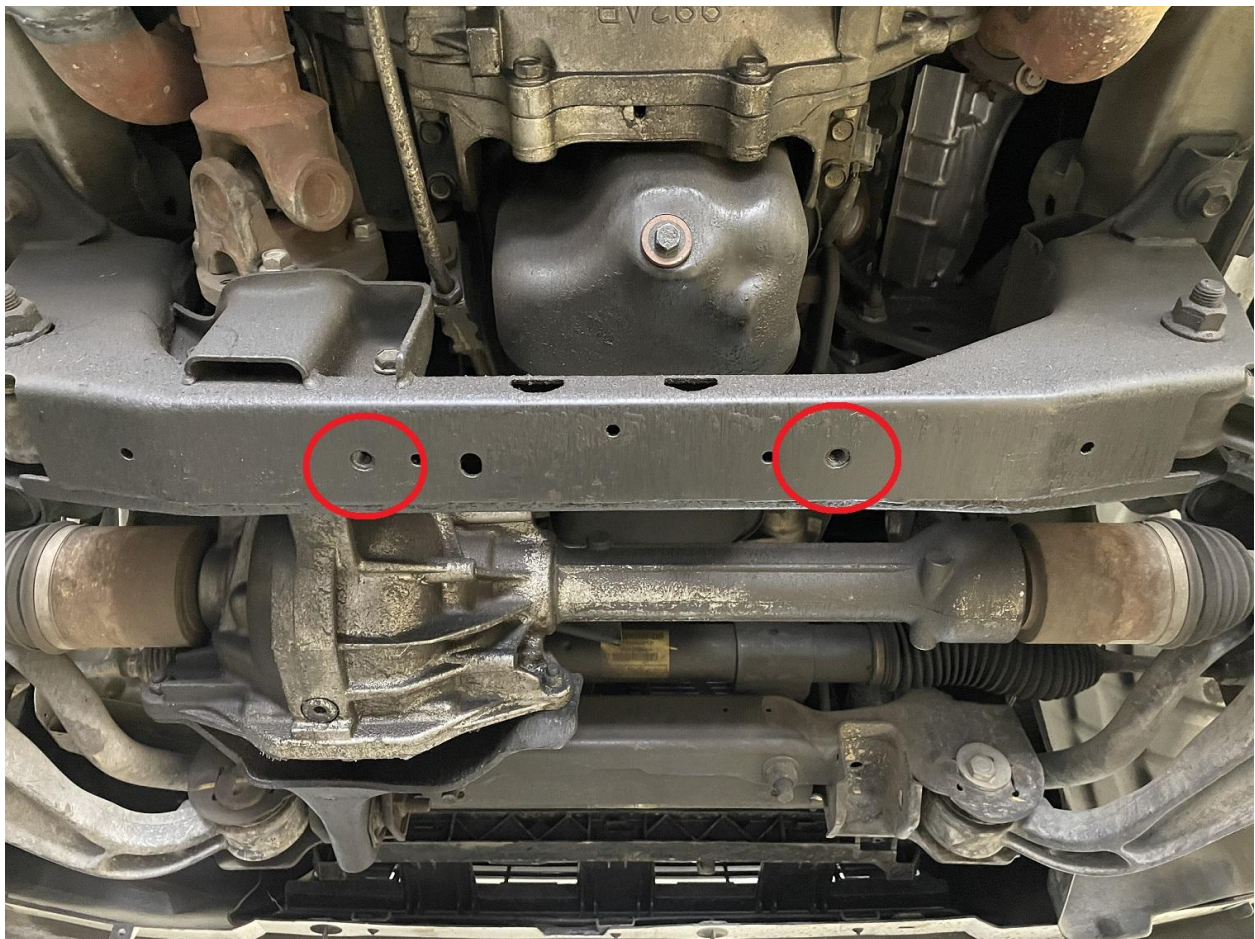
- (6) 1/4" lock washers
- (6) 1/4"-20 x 1" hex head bolts

Steps:

1.) Begin by raising your vehicle. We used a 4 post drive-on lift. A lift is recommended to gain full access to the underside of your Jeep.

2.) Our Jeep did not have any underbody shielding. However, yours might. As a result we did not see bolts located at the 2 most forward spots we decided to mount to. If there is a shield forward of this location that uses these bolt spots please just remove the bolts. Our shield will overlap either above, or below, with the OEM shield if that is the case.

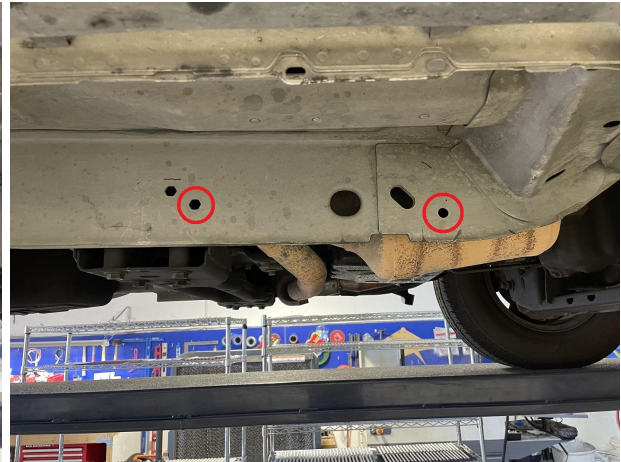
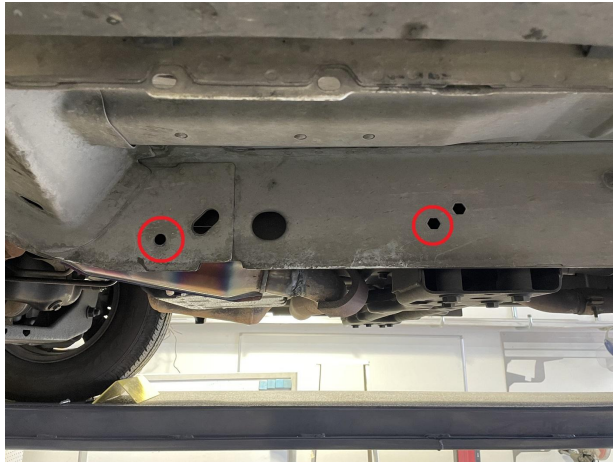
We believe the bolt heads for this location may have 17mm heads. Remove them.



3.) Identify the mounting holes on either side of the vehicle for the cat guard. These holes are located to the outside of the catalytic converters, and just under the rocker panels.

LEFT SIDE OF JEEP

RIGHT SIDE OF JEEP

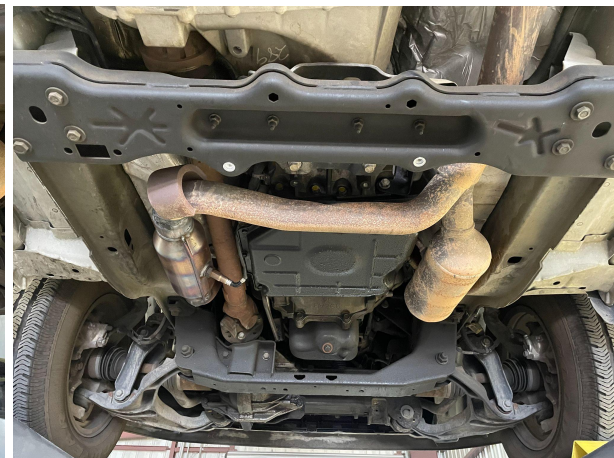
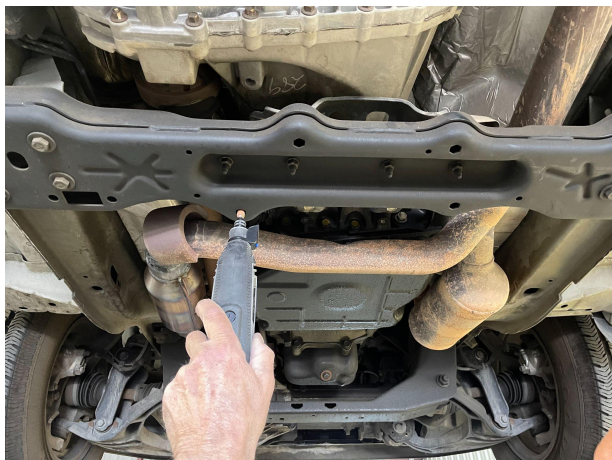
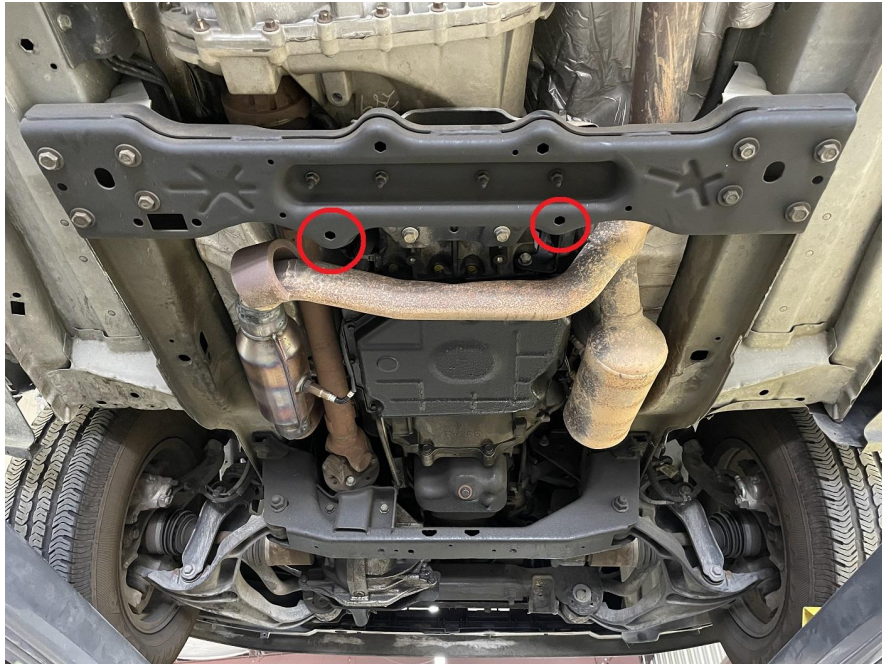


These 4 holes need to be bored slightly to 0.53" to fit the supplied rivnuts. We recommend a 17/32" drill bit / drill for the most forward holes, and a Dremel tool with an attachment for sanding down steel for the most rearward hexagonal holes.

Once these are bored out please install 4 of the supplied rivnuts at these locations.



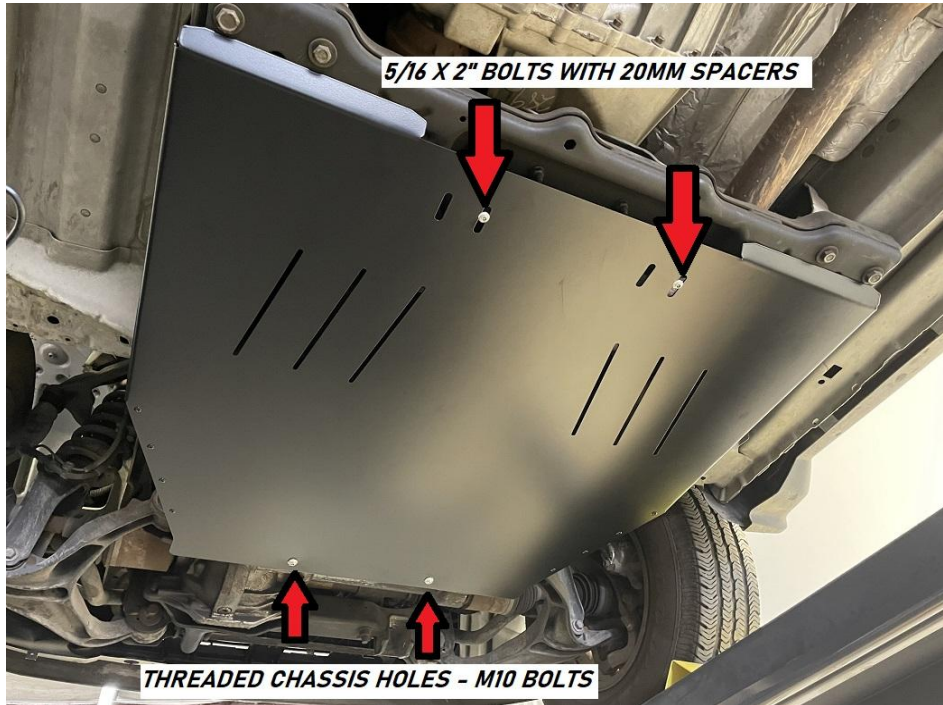
4.) Next, identify the two hexagonal holes shown located on the crossmember just behind the exhaust piping. Use your dremel tool to open the holes and then install 2 rivnuts.





5.) Your cat guard can now be installed. The rivnuts utilize 5/16" security bolts and 3/16" security bit. The rearward underside holes utilize the longer 5/16" security bolts with 20mm spacers between the cat guard and crossmember.

The larger M10 bolts that mount to the two most forward threaded holes in the chassis utilize the M10-1.5 x 25mm bolts and 7/32" security bit. Get help from a friend to hold everything up. Tighten securely.





8.) Once everything is buttoned up, install your oil drain cover using a 7/16" socket. The oil drain cover bolts up to the cat guard using 1/4"-20 x 1" hex head bolts with the 1/4" lock washers underneath the heads. Securely tighten.

9.) Enjoy your new catalytic converter guard/shield! Feel free to tag us online using #FSPEinc or #FSPerformanceEngineering. If you have any questions feel free to contact us.

PHONE: 661-809-0954

EMAIL: costas@fspeinc.com



THANK YOU :)