



## FS Performance Engineering

### Hyundai Veloster 2019+ Splitter Installation Instructions

#### CHASSIS MOUNTED BRACKETS - *professional installation recommended!*

##### **Tools Needed:**

- Drill
- 1/4" drill bit (see below if you ordered our chassis mounted rod brackets)
- 10mm open end wrench
- 10mm socket/ratchet wrench
- Masking tape (like blue painter's tape)
- Pen/pencil/marker
- Flat head screwdriver OR/AND clip remover

##### **If you ordered our splitter rods:**

- 3/16" allen head wrench
- 3/4" open end wrench
- 1/2" open end wrench
- 7/16" open end wrench

##### **If you ordered our chassis mounted rod brackets:**

- 1/4" INDUSTRIAL RATED DRILL BIT (like a "Dream" drill bit, not something from Home Depot)
- Flexible measuring tape
- Small level

##### **Included in Kit:**

- (1) Splitter
- (1) Splitter Bottom Layer
- (2) Winglets/Flares
- (30) M6-1.0 x 20mm bolts
- (30) 1" OD fender washers
- (30) 1/4" small washers
- (34) M6-1.0 nyloc nuts
- (4) M6-1.0 x 16mm countersunk bolts
- (4) M6 black countersunk washers

##### **If you ordered splitter rods with NO CHASSIS MOUNTED ROD BRACKETS:**

- (1) Pair of 8.5-10.25" splitter rods
- (4) 1.25" OD, 5/16" ID washers
- (4) 5/16"-18 (3/4" long) button head bolts

##### **If you ordered splitter rods AND OUR CHASSIS MOUNTED ROD BRACKETS:**

- (2) Chassis mounted brackets
- (1) Pair of 6.75-8.5" splitter rods
- (2) 1.25" OD, 5/16" ID washers
- (4) 5/16"-18 (3/4" long) button head bolts
- (4) M6-1.0 nyloc nuts
- (4) M6-1.0 x 55mm bolts
- (8) 1/4" small washers

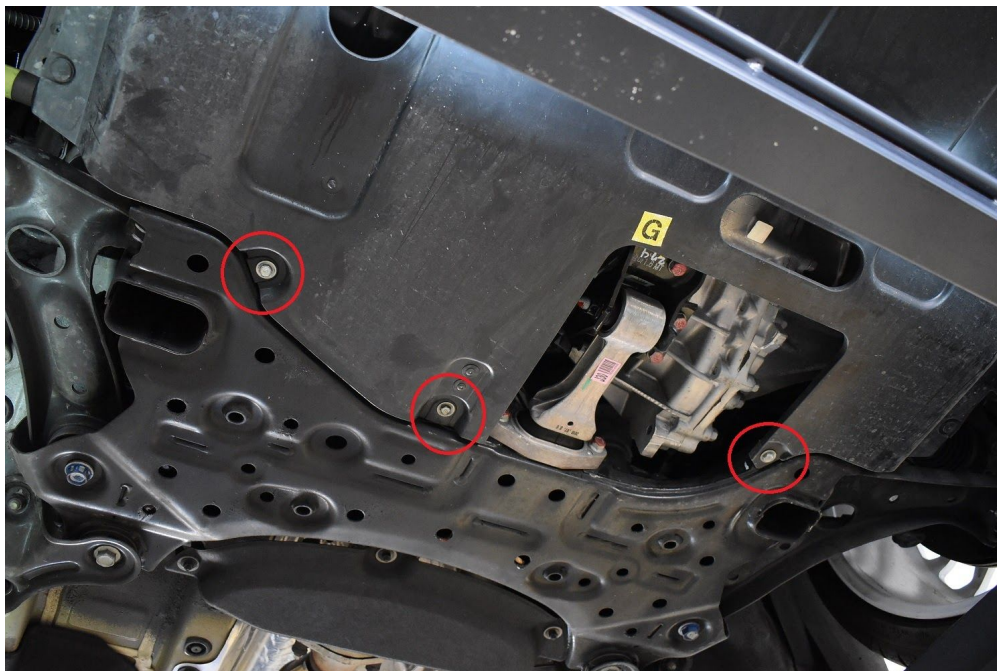
**Steps:**

- 1.) Raise the car and secure with jack stands.
- 2.) Remove the car's under tray. Use a 10mm socket/ratchet wrench to remove the seven bolts holding the tray (4 at the front, 3 at the rear). Use a flat head screwdriver to remove the clips around the perimeter securing the tray to the car; there should be 12 of them.

**BOLTS AT FRONT:**



**BOLTS AT REAR:**





CLIPS AT PERIMETER:



TRAY REMOVED:

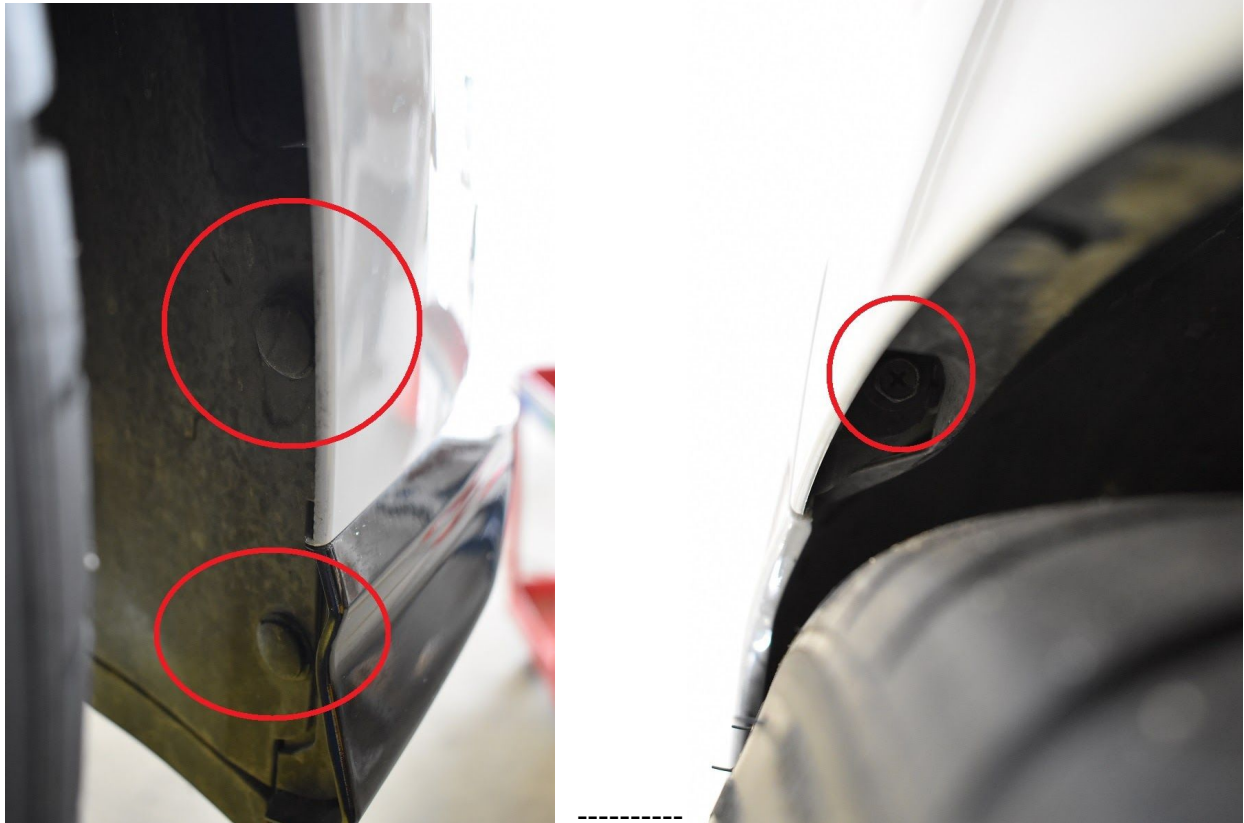


3.) If you did NOT purchase chassis mounted rod brackets, skip to step 12. If you did purchase the brackets, you must remove the bumper. Move to the front inner fender wells and remove the 10mm bolt and 3 clips found on each side (in front of the wheel).

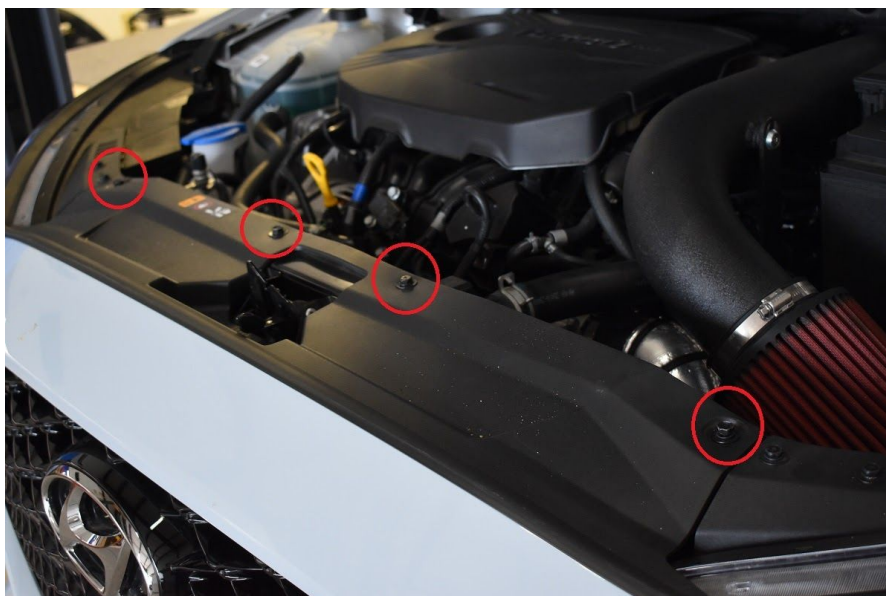
BOTTOM TWO CLIPS:

TOP BOLT:

There is another just above the air duct opening.



4.) Open the hood and remove the four 10mm bolts found at the radiator cover.





5.) To remove the bumper the headlights do NOT need to come off. We recommend having a friend help you remove the bumper. The bumper pulls out of tabs located between the fender, and bumper; as well as out of tabs just under the headlight. Moderate pulling pressure is necessary.

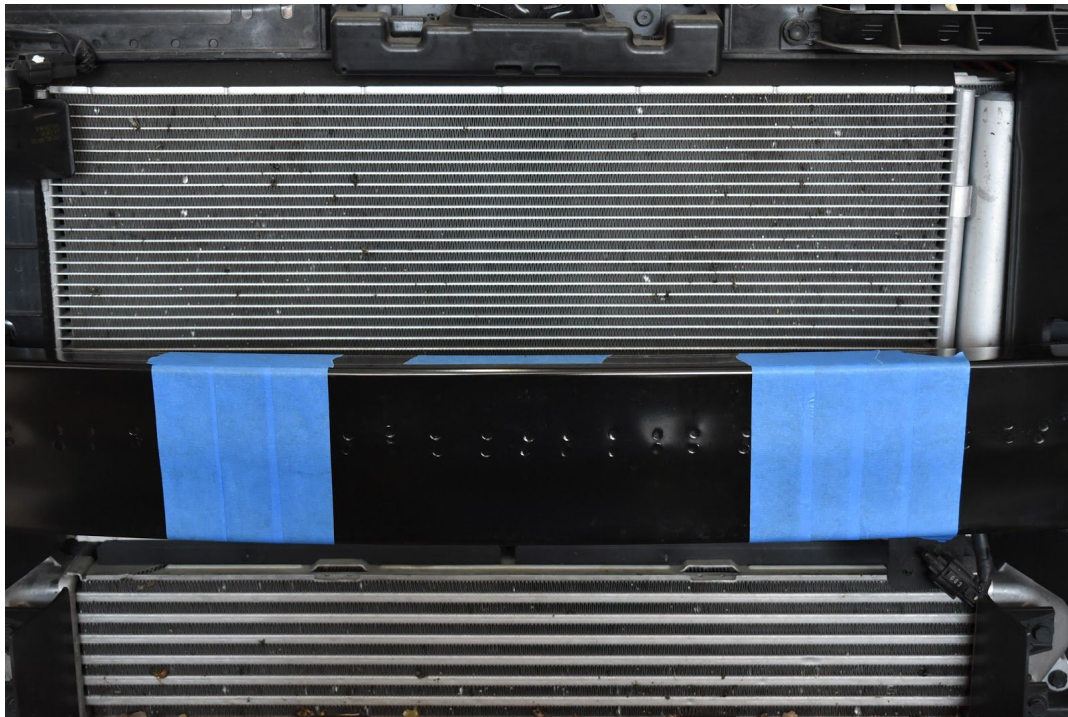
TABS UNDER FENDER/HEADLIGHT:



BUMPER OFF:

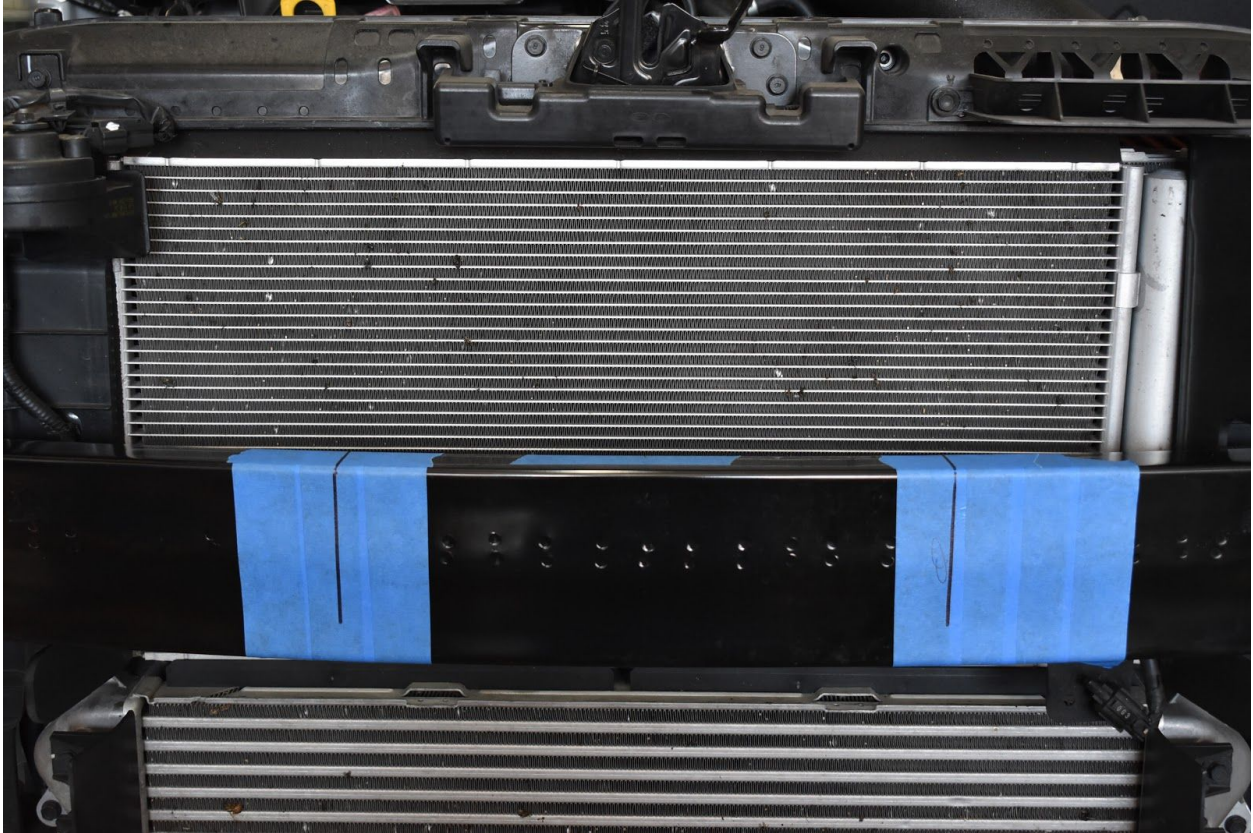


6.) Now that the bumper is off, locate the black bash/crash bar. Find the center of it using your flexible measuring tape - lay down masking tape and mark the center with your marker. Then place tape approximately 5-7" to the left and right of the center mark.





7.) Make marks exactly 6-3/16" to the left and right of the center. The marks should be exactly 12-3/8" apart. Use your level to mark vertical lines at those spots.



8.) Align the holes in your brackets with the vertical lines. Use a level at the top to assure it's flush with the top of the beam. Then mark your holes.



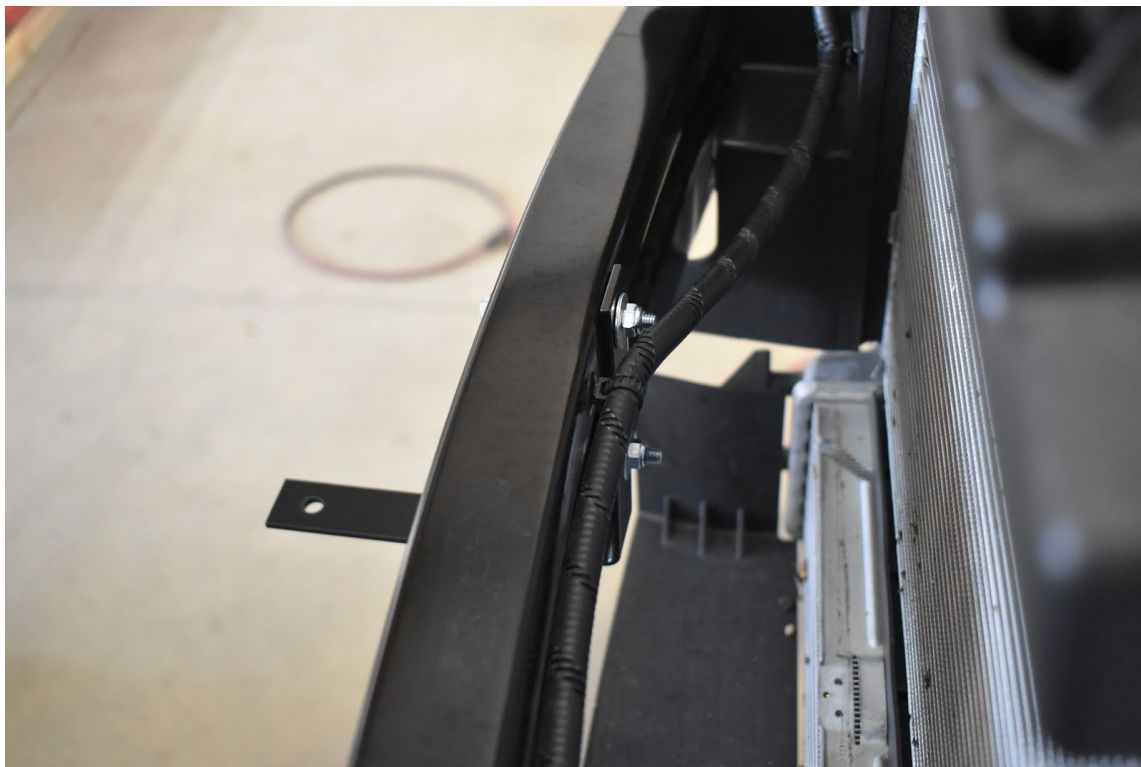
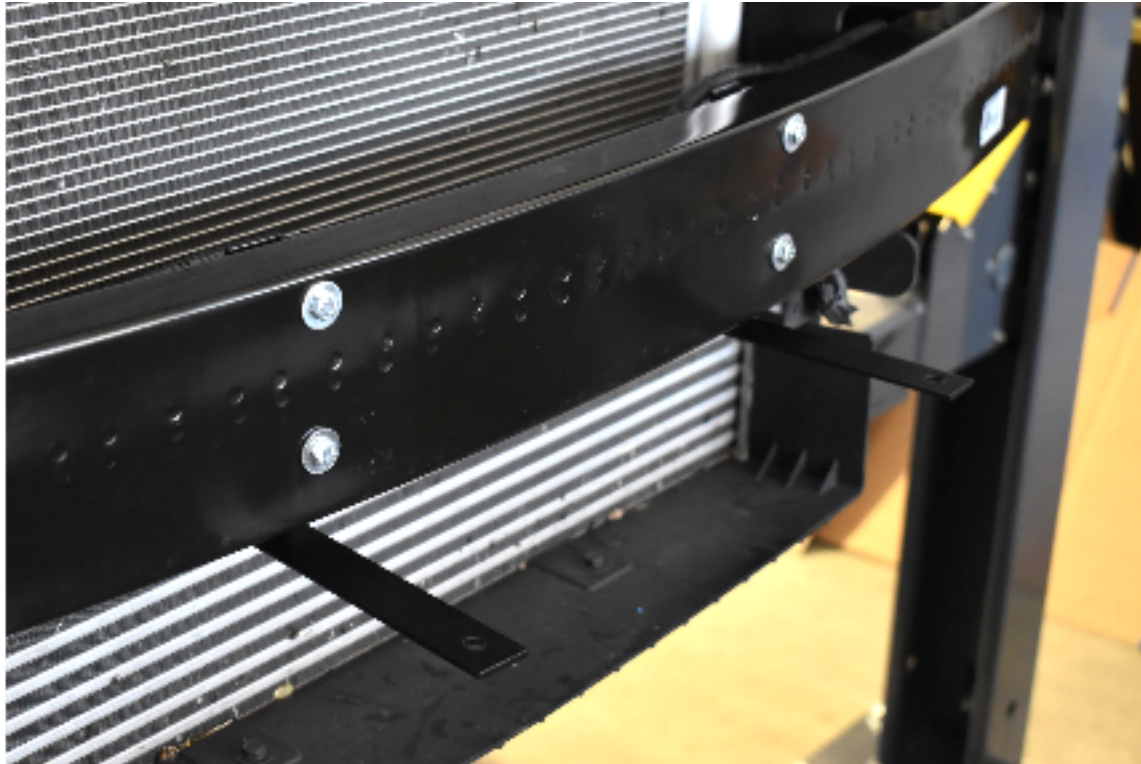


9.) Now that the holes are marked, use your 1/4" INDUSTRIAL DRILL BIT to drill through the crash beam. Assure you are drilling perpendicular to the beam. Drill through both the front and back of the beam so a bolt can pass through both sides. Total holes drill = 8.





10.) Remove the tape and install your brackets onto the backside of the beam. Use M6-1.0 x 55mm bolts and  $\frac{1}{4}$ " small washers on the front side, and  $\frac{1}{4}$ " small washers + nyloc nuts on the back side. Tighten securely.



11.) Now that you've gone through all this trouble. Reinstall your bumper!! Just follow the steps in reverse order, but leave the undertray off.

12.) Splitter installation is actually simple so there is not much to explain. Essentially position, mark, drill, install. Start by placing tape under the center and left and right edges of the bumper.



13.) Elevate the splitter up against the bumper. Wooden blocks and a friend should do the trick. The splitter should sit against the black “flap” found behind the underside of the bumper. (FIRST PIC SHOWS THIS). Maneuver the splitter so it is symmetrical. This means that it sits at the front of the inner fender well equally on both sides of the car. Mark up through the outer holes and center hole with a sharpie onto the bumper. (2nd PIC).







14.) Now that you've marked a couple of the holes onto the bumper, remove the splitter and drill through them with your drill and 1/4" drill bit.



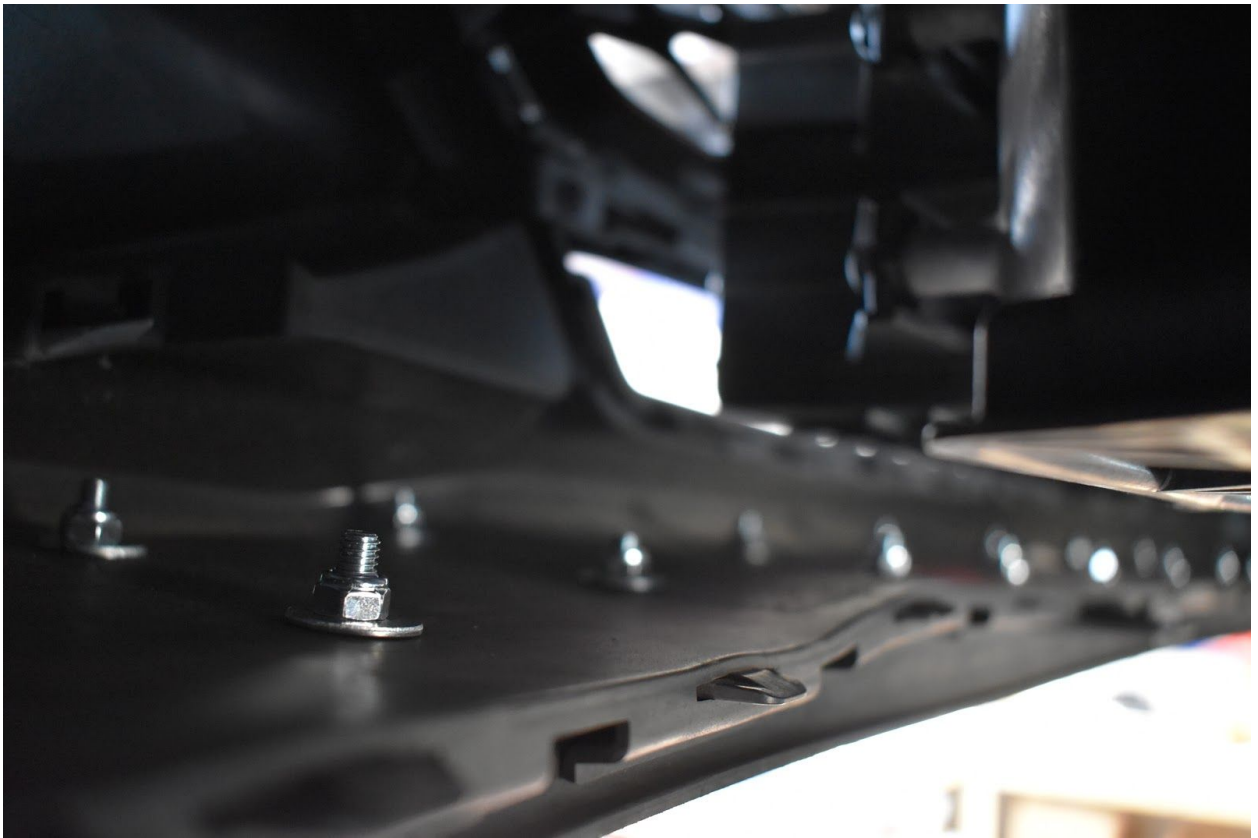
15.) Install your splitter into these few holes. Use M6-1.0 x 20mm long bolts with 1" OD fender washers under the heads, and 1/4" small washers + nyloc nuts on top. Securely tighten - do not overtighten as you are bolting onto plastic. Note: our hole locations may be a tad different than yours.



16.) Drill up through the remaining holes in the splitter. Then fill them with the same nut/bolt combo. Lay the 2nd splitter layer underneath the top layer in the center. Note 1: BE SURE NOT TO DRILL PAST THE 1ST LAYER IN THE BUMPER - don't allow the drill to push up and drill into the upper bumper. Note 2: blow out the plastic residue made between the splitter and bumper before installing the hardware. Securely tighten these bolts.









17.) If you are installing splitter rods onto your chassis mounted brackets and/or splitter use the provided 5/16" button head bolts pointing downward with blue loctite. See the separate instructions for installation. You will have to locate and drill your own 5/16" holes in the splitter.



18.) Once the rods are installed apply edge trim if ordered!

19.) Assure all bolts are tightened securely and reinstall your undertray/splash tray.

20.) Enjoy your new FS Performance Engineering aero! Tag us & use #FSPerformanceEngineering in the online world!!



For questions email [costas@fspeinc.com](mailto:costas@fspeinc.com) or [jim@fspeinc.com](mailto:jim@fspeinc.com)

Or call/text us at (661) 809-0954