



FS Performance Engineering

Honda Civic LX Gen 10 (2016-2020) Canards Installation Instructions

Professional Installation Always Recommended, Not Required

Tools Needed:

Tools Needed:

- Drill
- 1/4" Drill bit
- 5/32" allen head wrench
- 7/16" wrench
- Friend/helper
- Pencil/pen
- Flexible measuring tape
- Masking tape
- Oil

Included in Kit:

- (2) Canards w/ edge trim
- (6) 1/4"-20 x 1" Countersunk SS Bolts
- (6) 1/4" Countersunk Washers
- (6) 1/4" SS Small Washers
- (6) 1/4"-20 SS Nyloc Nuts
- (6) Rubber washers

Steps:

1.) Raise the front of the car and place it on jack stands. You need access behind and under the bumper. If need be, remove the bumper (recommended). This makes things MUCH easier. It's also easier if you remove the under trays.

2.) Place masking tape onto a majority of the front bumper where the canards will mount.



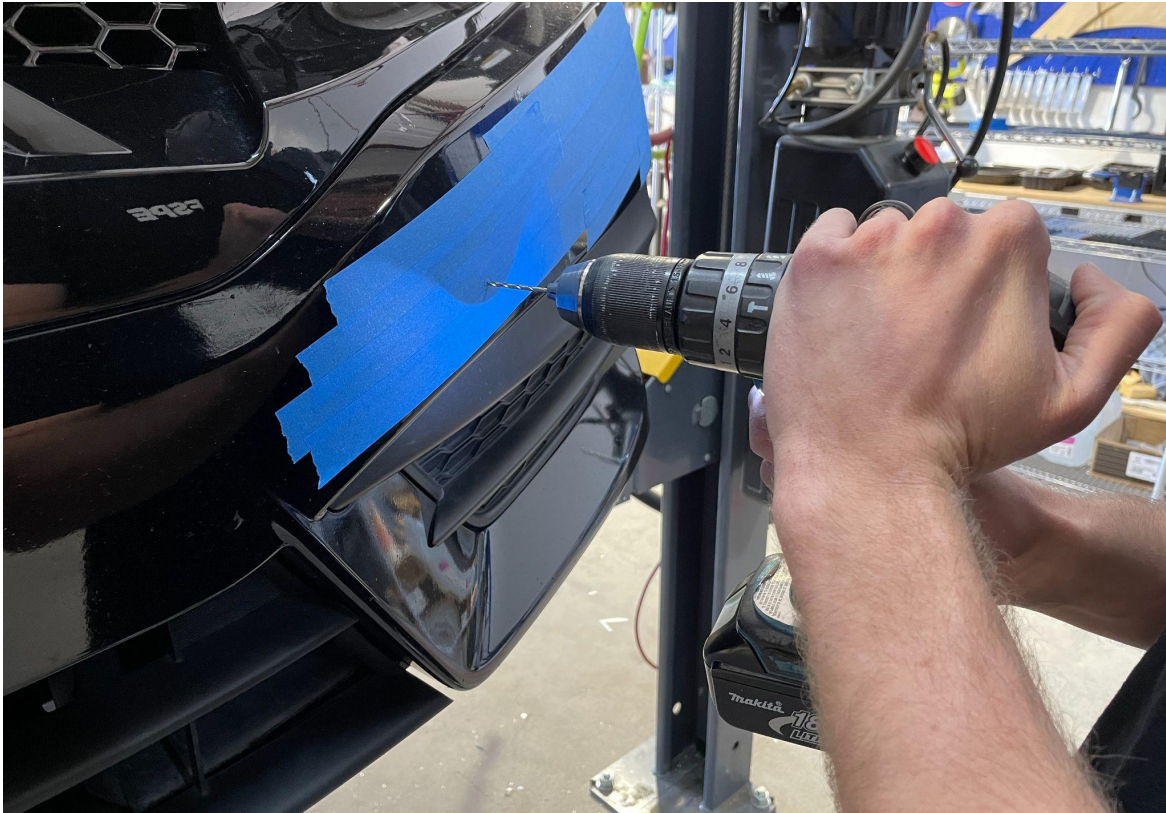
3.) Starting on one side of the car, hold a canard (the correct one for the side) up to the bumper. Adjust it so there is no gap between the bumper and canard.



4.) Have your friend mark the 3 holes onto the masking tape.

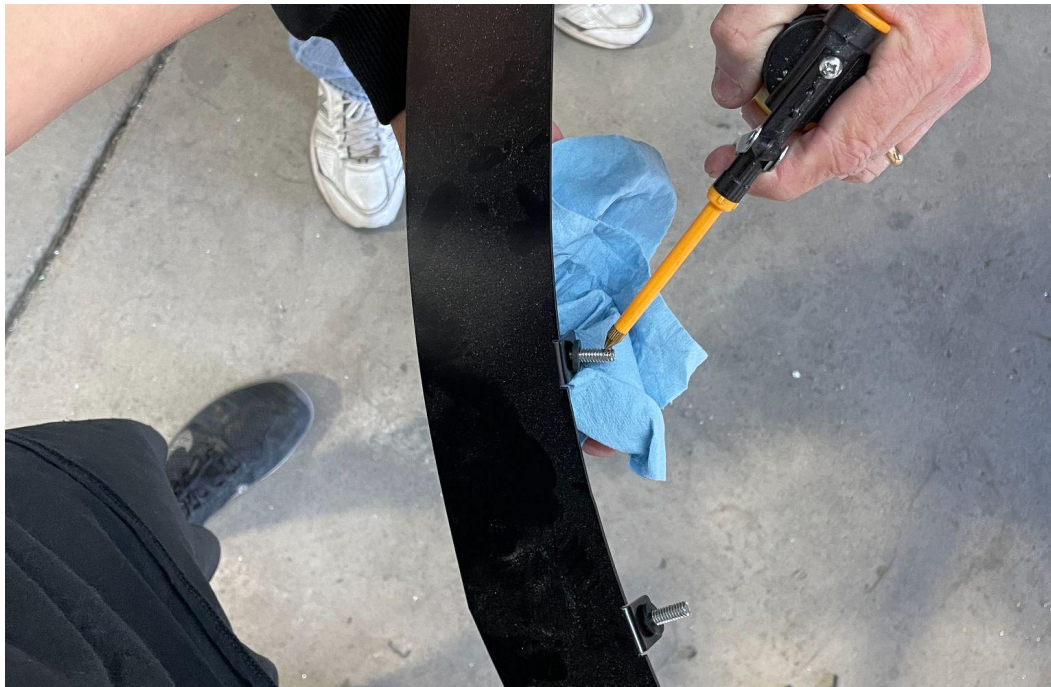


5.) Drill through the bumper at the marked locations using a ¼” drill bit.



6.) Use flexible measuring tape and a pencil to reflect one of the holes (front hole recommended) onto the other side of the car. The canards need to be bolted onto the same place on each side.

7.) Remove your tape and install the canard loosely. Point the bolts inward with countersunk washers under the heads. PLEASE put oil on the threads of the bolts when installing or you will regret it. Use the rubber washers between the canard and bumper. On the inside of the bumper use the 1/4" small washers and nyloc nuts.





8.) If the edge trim hasn't already been applied on the top side between the bumper and canard, apply it firmly. While holding the nuts on the inside, tighten the bolts firmly. Do not over tighten.





9.) Repeat the process on the other side and use your flexible measuring tape, AND YOUR GOOD JUDGEMENT (eyeballing things) to assure the second canard is being bolted on symmetrically.

10.) Enjoy your new FS Performance Engineering aero! Tag us & use #FSPerformanceEngineering in the online world!!



For questions email costas@fspeinc.com or jim@fspeinc.com
Or call/text us at (661) 809-0954