



FS Performance Engineering

Ford Mustang (2015-2017) Front Splitter Installation Instructions

Tools Needed:

- Ratchet wrench
- 7mm wrench / socket
- 10 wrench AND socket
- Flat head screwdriver / clip remover
- Needle nose pliers
- Masking tape
- 1/4" drill bit
- 5/16" drill bit
- Drill
- 7/16" open wrench (2 OF THEM)
- 1/2" open end wrench
- 3/4" open end wrench
- 3/16" allen wrench
- 5/32" allen wrench

Included in Kit:

- (1) 3 piece splitter
- (2) Flares/fins
- (1) Undertray

- (2) 5-1/2" long, 1/4"-20 SS all thread
- (6) 2-3/16" long, 1/4"-20 SS all thread

- (6) M6-1.0 whiznuts (4 will be extra)
- (10) M6-1.0 nyloc nuts
- (30) 1/4"-20 nuts
- (4) 1/4"-20 SS nyloc nuts

- (45) 1/4" ID, 1" OD fender washers
- (10) 1/4" small washers
- (35) 1/4" lock washers
- (4) 1/4" black countersunk washers

- (15) M6-1.0 x 20mm hex flange bolts
- (4) 1/4"-20 x 5/8" countersunk SS bolts

- (1) Blue threadlocker

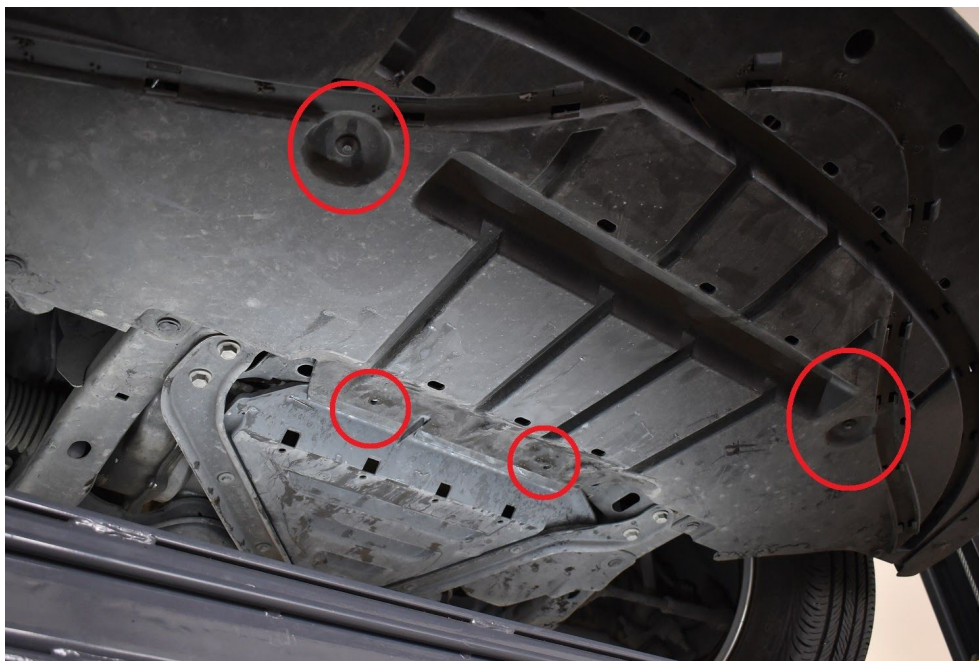
Steps:

- 1.) Raise your car and secure it with jack stands.
- 2.) Remove the OEM undertray with a 7mm wrench and flat head screwdriver. There are 12 bolts along the front edge, 2 at the center, and 2 at the rear. There are 6 clips toward the rear, outer left and right sides. Save the clips for later use.

12 BOLTS AROUND PERIMETER:



2 BOLTS AT CENTER AND 2 AT REAR:



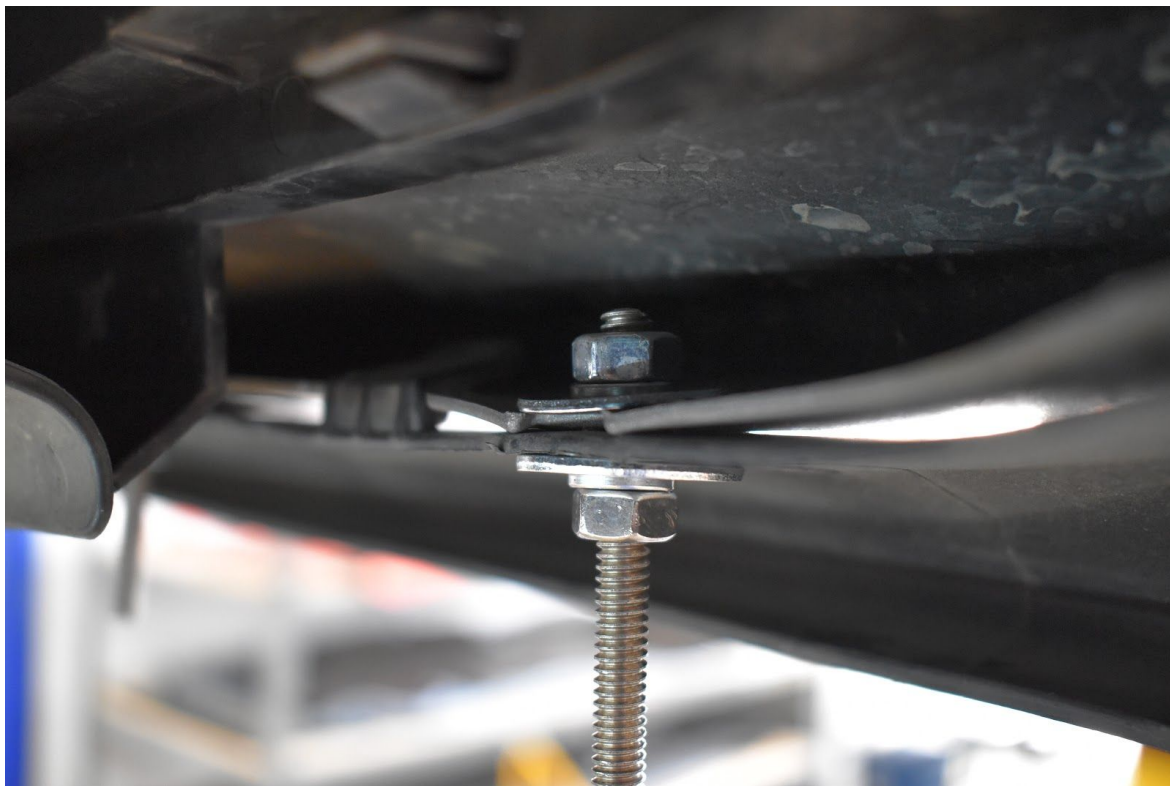
6 CLIPS AT LEFT AND RIGHT (3 ON EACH SIDE) - SAVE THESE FOR LATER USE:



3.) Remove the 6 speed nuts found along the front of the bumper with a flat head screwdriver or needle nose pliers (or other useful tool).



4.) Install each piece of all thread onto the bumper as shown. On the top and bottom there should be a nut, $\frac{1}{4}$ " lock washer, and 1" OD fender washer. Tighten securely. There should be little to none thread showing above the top nut on each all thread.



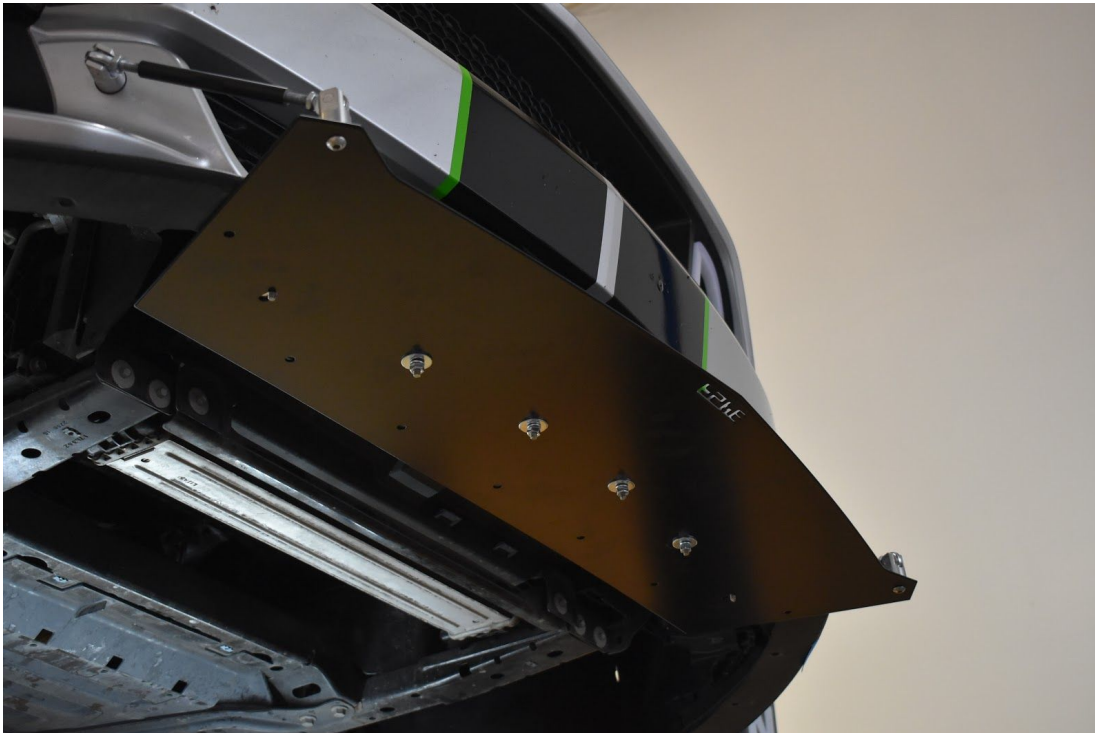
5.) Thread a ¼"-20 nut onto each all thread.



6.) Tape a ¼” lock washer and 1” OD fender washer onto each of the nuts. This helps prevent washers from falling. Make it so the tape will be easily removable (or not if you don’t care if the tape stays - it won’t be seen).



7.) Install your center splitter onto the middle four all threads with ¼”-20 nuts, ¼” lock washers, and 1” OD fender washers. Just snug for now. Remove the tape if you want on these 4.

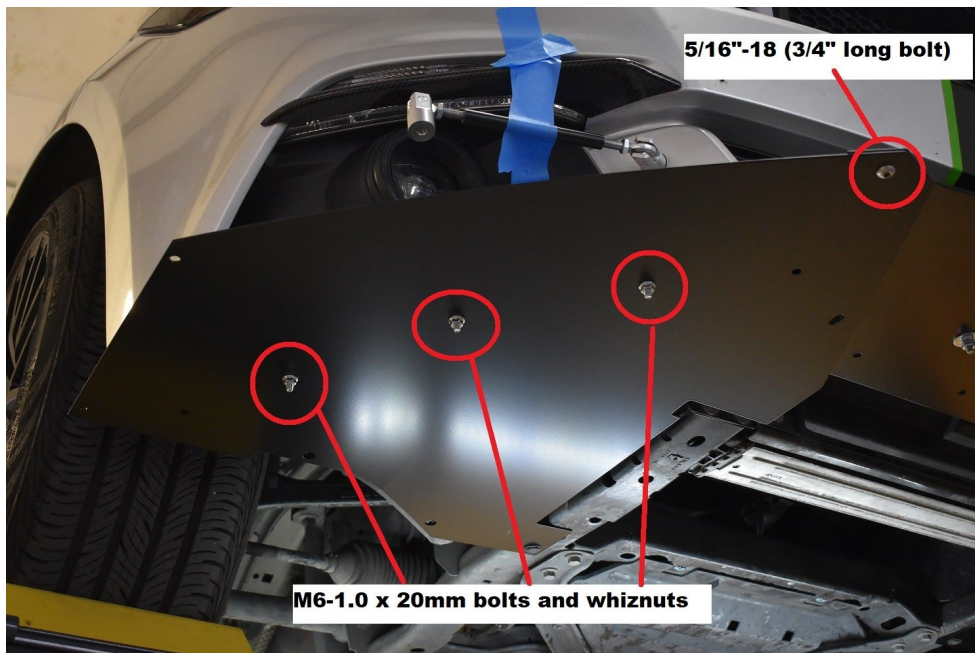


8.) Identify where you would like your splitter rods. We provide 6.75-8.5" splitter rods and you can see where we personally mounted to the car. Make sure the distance between the holes in the splitter and car is a proper length - not too long. We recommend mounting the rods to the car first, then mounting to the splitter after everything is installed on the car. Use the splitter rod installation guide provided separately.

HERE IS WHERE WE MOUNTED OURS:

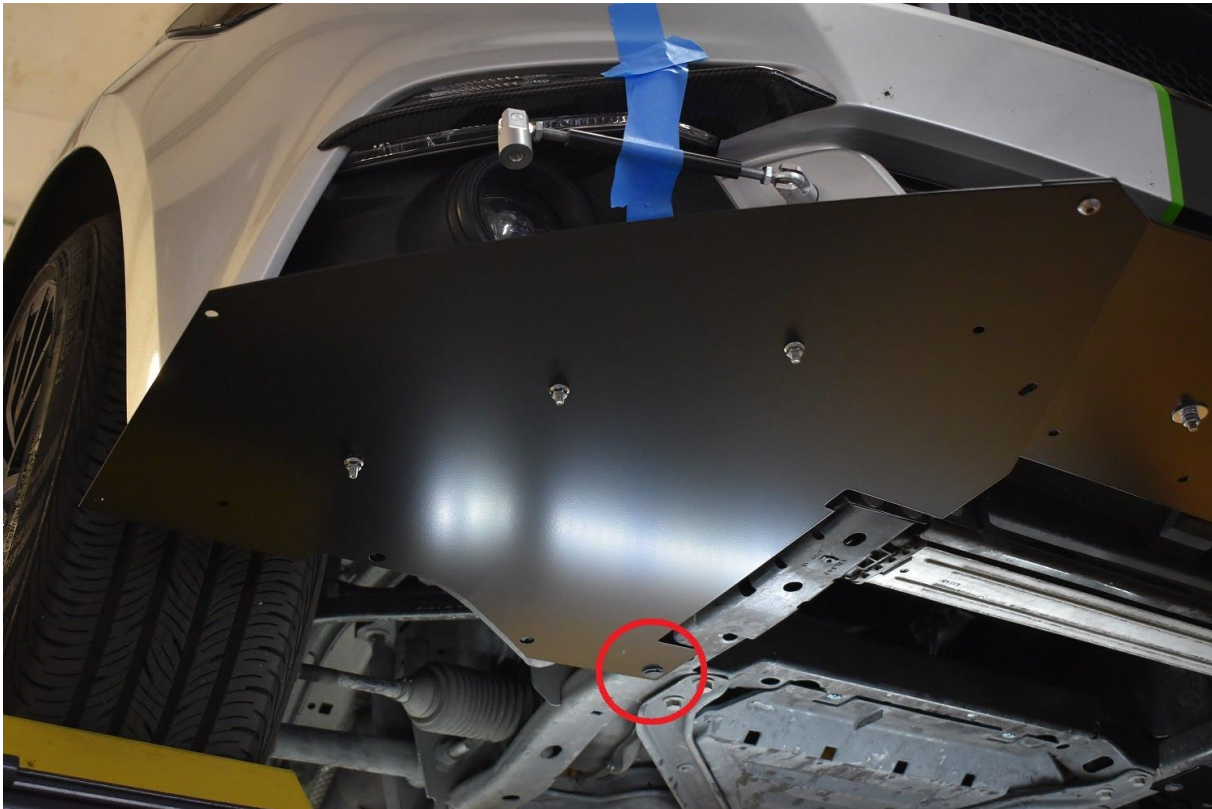


9.) Install your outer splitter pieces onto the car into the OEM holes with six M6-1.0 x 20mm bolts and six whiznuts - just to hold it all in place. Use a provided 5/16"-18 splitter bolt to hold the front holes in the splitter together.





10.) Use one of the OEM pop clips on each side at the rear of the outer splitter pieces to help hold it in place.



11.) Drill up through the two empty splitter holes on each side.



12.) → Remove the OEM pop clips on each side and install the M6-1.0 x 20mm bolts into the holes just drilled. Use 1" OD fender washers under the head, and ¼" small washers + M6 nyloc nuts on top. Securely tighten.

→ Install whiznuts with blue threadlocker onto the remaining two all-thread pieces. Securely tighten. Remove the blue tape above if you'd like.

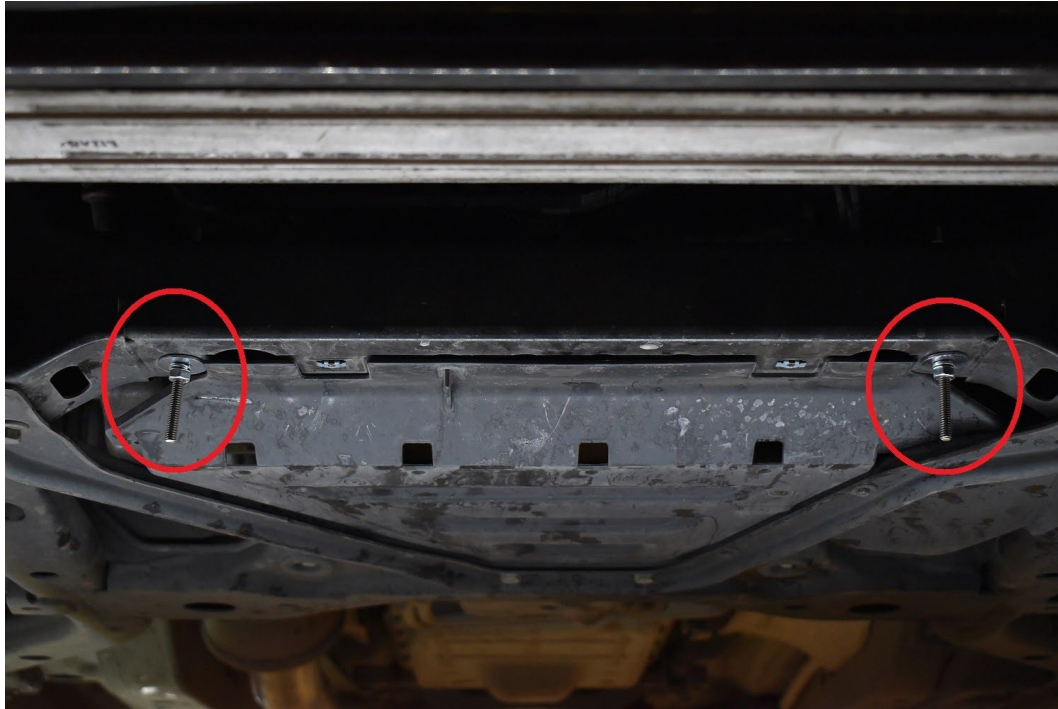
→ Install all of the OEM pop clips into the car.

ON BOTH SIDES OF CAR:

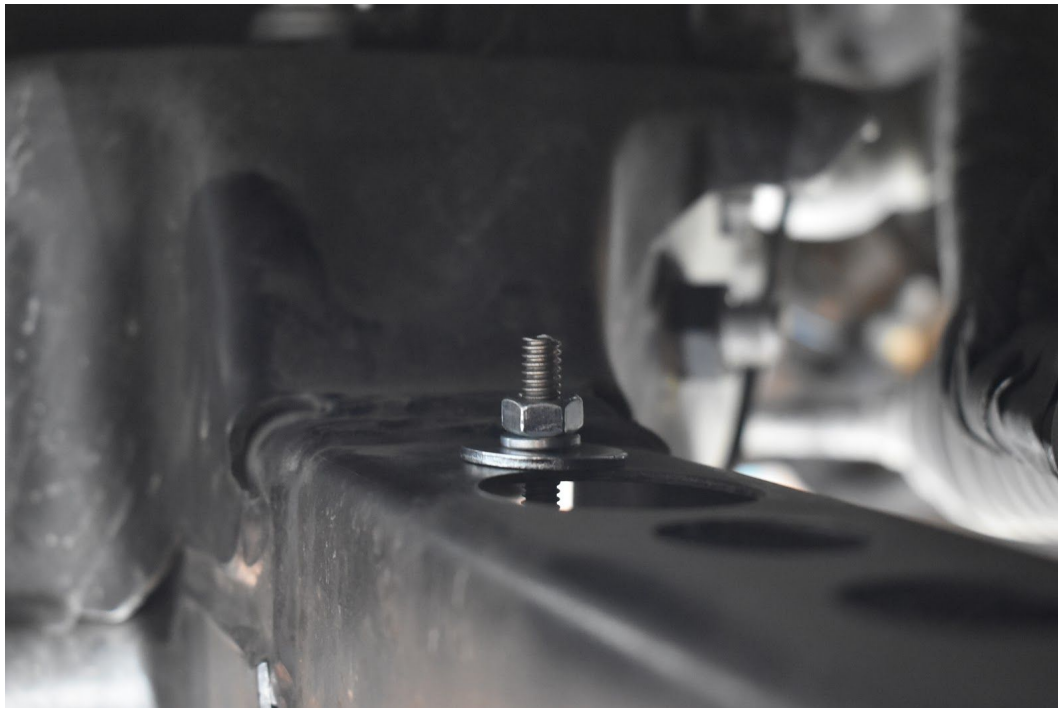


13.) Under the car identify the two holes on the frame to the outside of the OEM speed nuts. Slip your 5 ½" long all thread through the frame and install a 1" OD fender washer, ¼" lock washer, and ¼"-20 nut on top and bottom. Center as best as you can on the holes. You want 2 ½" of thread sticking out from the frame. Securely tighten.

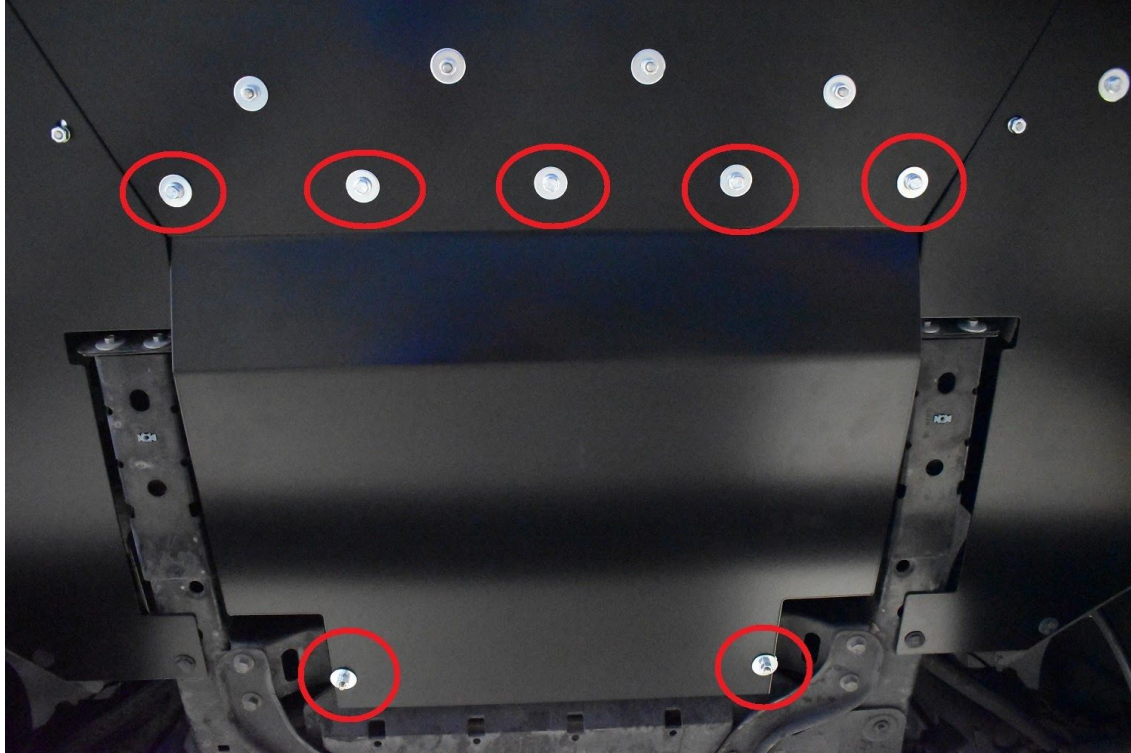
BOTTOM OF FRAME:



TOP OF FRAME:



14.) Install your under tray. The under tray has built-in rivnuts. You simply need to slide the tray on top of the center splitter, and install 1" OD fender washers, 1/4" lock washers, and M6-1.0 x 20mm bolts from the bottom. Then install the tray onto the all thread from the previous step. Use 1" OD fender washers, 1/4" lock washers, and 1/4"-20 nuts on top and bottom. Securely tighten.





15.) Install your splitter rods into the 2 remaining holes with your 5/16" bolts. Install your flares/fins with the 1/4" countersunk bolts pointing down, washers, and nuts!



16.) Enjoy your new FS Performance Engineering aero! Tag us & use #FSPerformanceEngineering in the online world!!



For questions email costas@fspeinc.com or jim@fspeinc.com
Or call/text us at (661) 809-0954