



FS Performance Engineering

Ford Focus RS (2016-2018) Front Splitter Installation Instructions

*NEW*** IF YOU HAVE A 2-LAYER SPLITTER, THEN THE BOTTOM LAYER PIECES SIT UNDERNEATH THE LARGE SPLITTER WITH COMMON BOLT HOLES!!!*

Tools Needed:

- 10mm open end wrench
- 10mm socket
- Ratchet wrench
- Needle nose pliers
- Push clip remover (something like a flat head screwdriver)
- Phillips head screwdriver
- T30 (torx) driver

If you have fins:

4mm or 5/32" allen hex wrench

If you have our splitter rod supports:

- 1/4" drill bit
- sharpie/marker

If you have our rods:

- Drill
- 5/16" drill bit
- 3/16" allen hex wrench
- 1/2" open end wrench
- 7/16" open end wrench
- 3/4" open end wrench
- Blue loctite

Included in Splitter Kit (no lip)

- (1) Splitter + 1 vinyl patch
- (1) Optional driver side flare/winglet
- (1) Optional passenger side flare/winglet
- (2) Air ducts
- (4) 30mm aluminum spacers
- (25) M6-1.0 x 20mm bolts
- (4) M6-1.0 x 50mm bolts
- (26) 1/4" ID, 1" OD fender washers
- (4) 1/4" ID small washers
- (33) M6 nyloc nuts
- (4) M6-1.0 x 16mm stainless steel countersunk bolts
- (4) M6 black anodized countersunk washers
- (2) 2.5" #8 long body screws
- (2) #8 washers

If you ordered rod supports:

- (4) M6-1.0 x 20mm bolts
- (4) 1/4" small washers
- (4) M6 nyloc nuts

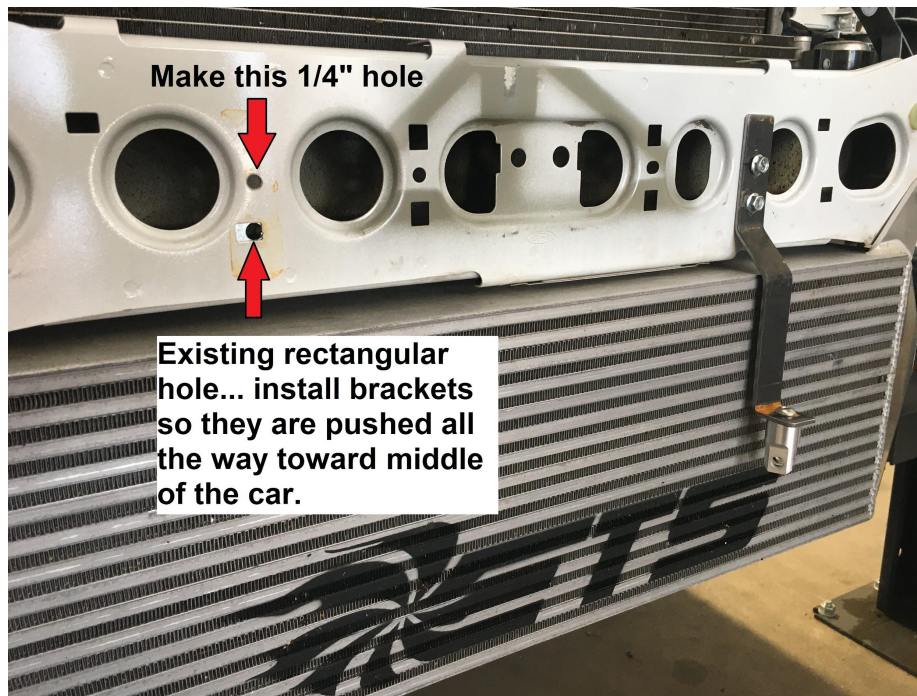
If you ordered rods:

- (4) 5/16-18 x 0.75" SS button head bolts
- (4) 5/16 ID, 1.25" OD SS washers



- 1.) Raise car and secure with jack stands.
- 2.) If you purchased our bash/chassis mounted rod supports continue to step 3. If you did NOT purchase them move to step 5.
- 3.) Since you want to install the bash/chassis mounted rod supports, you will need to remove the bumper. We won't show you here... but you'll need a T30 (torx) screwdriver and a clip remover to remove it. You may need additional tools. Go ahead and "google" how to remove it. As a result of removing the bumper you'll also likely remove the reinforcing tray, & splash tray. Leave them off. You'll see later in the instructions if they are no longer needed.

IF YOU HAVE ANY SPLITTER EXCEPT THE V2: To install the supports you'll need to remove the bumper so the bash bar is exposed. Take a look at where the supports are installed - the bottom hole on the bash bar is a rectangle. For the top hole in the bash bar you will need to make it with a 1/4" drill. Make sure the support is level (completely vertical) before marking and drilling the top hole.



IF YOU HAVE THE V2 3-PIECE SPLITTER: Notice the large circular holes to the outside of the original brackets shown in picture above. You need to mount your brackets to the outside of the circular holes and utilize the upper rectangular holes. You'll have to drill the lower holes.



4.) When installing the supports point the M6-1.0 x 20mm bolts inward. Use 1/4" washers and nyloc nuts on the inside of the bash bar. Securely tighten. Reinstall the bumper - keep in mind that if you have the mesh grill still in place you can either remove it to allow room for the brackets to poke through, or do several measurements/test fits and cut slots in the mesh.

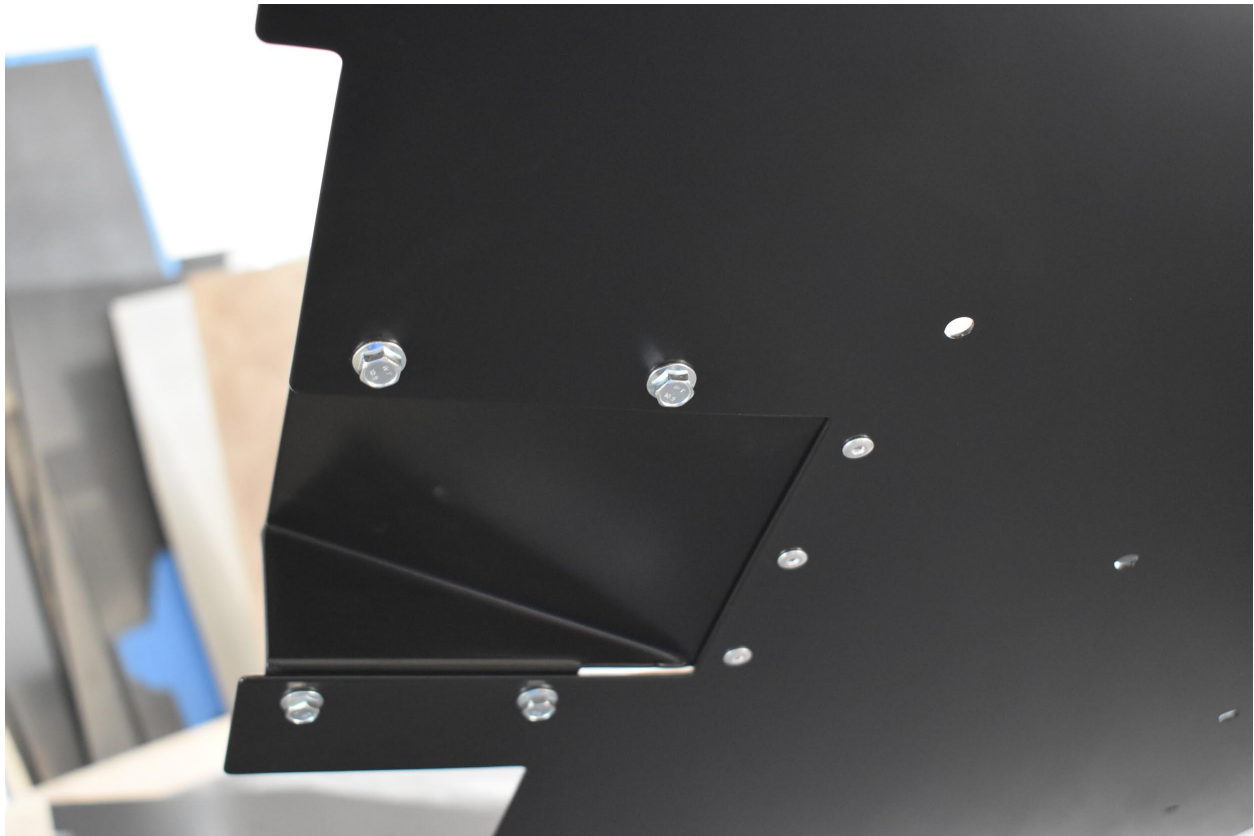


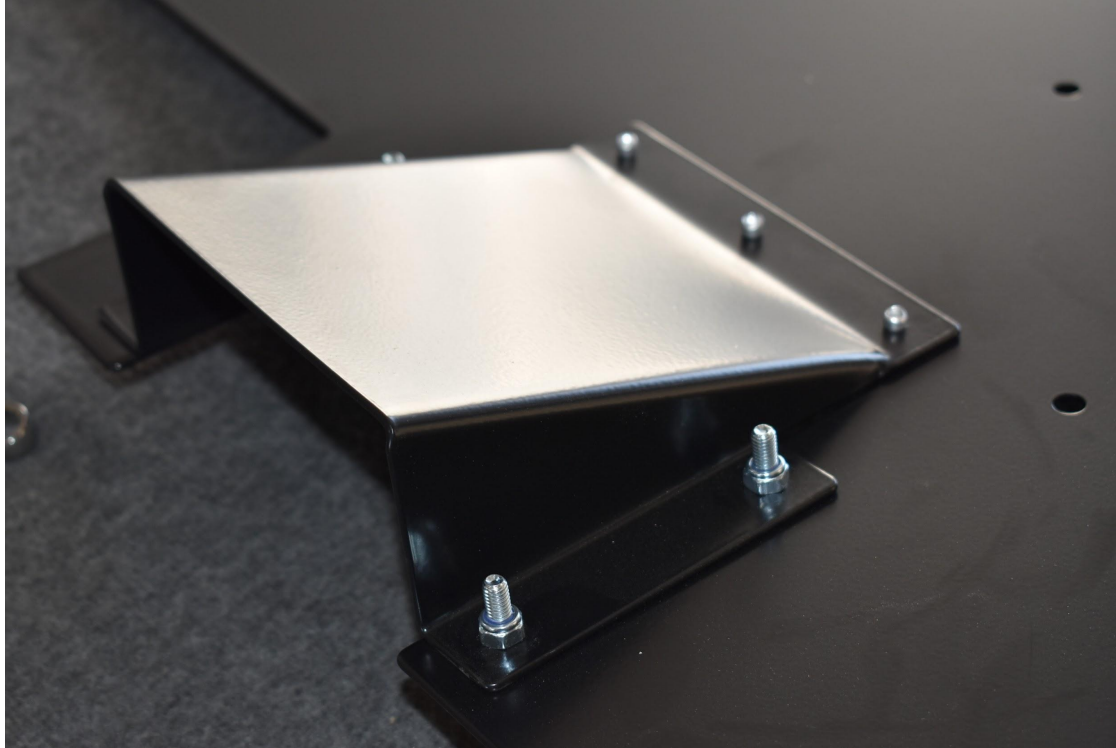
5.) Splitter installation is simple. Start by assembling the flares. Install the flares/winglets with your M6-1.0 x 16mm countersunk bolts & countersunk washers. If you have a 2 layer splitter the fins will be bolted to the 2nd layer (holes are pre-drilled). Place the fold underneath the splitter, and the bolts pointing downward. Use nyloc nuts on the bottom. Securely tighten.



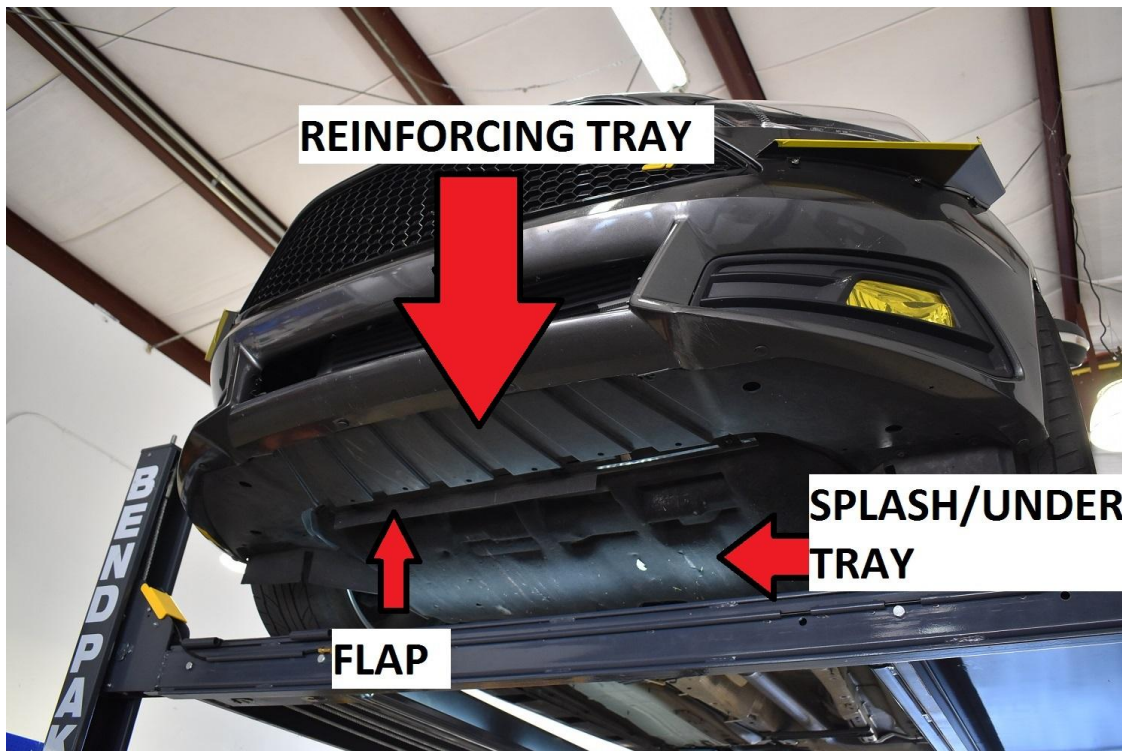


6.) Install the air ducts on the splitter using M6-1.0 x 20mm bolts pointing upward with nyloc nuts on top. Ignore the pop rivets in our picture - you will have bolts.

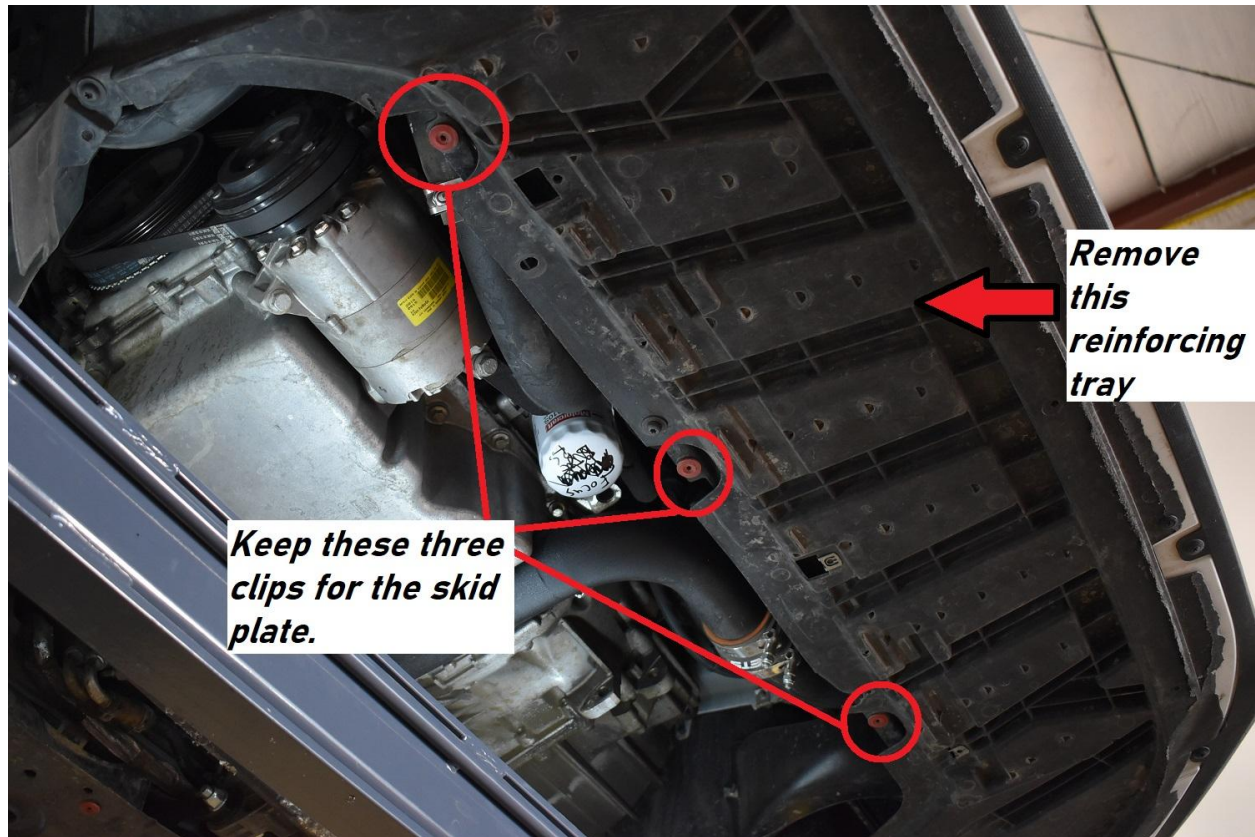




7.) Now, moving to the car. Remove your OEM flap, splash/under tray, and reinforcing tray. Use your flat head screwdriver/clip remover to remove the clips holding the reinforcing tray to the bumper. Use a T30 driver to remove the screws holding the reinforcing tray, flap, and splash tray. Keep the bolts. Clips can be discarded/set aside.



8.) Remove the red clips that hold the reinforcing tray to the chassis using your needle nose pliers. We just used our fingers. Please DO NOT remove the clips that hold your OEM skid plate (the OEM skid plate is a cloth like material).



9.) If you are installing splitter rods this is the time to find and use mounting points on the car. Mounting points are up to you unless you've purchased our rod supports. "What you need to know" instructions for the rods are provided. If you've purchased the splitter V2 there are already holes in the splitter. For the V1 holes need to be located and drilled by you.

10.) Remove the remaining clips along the front of the bumper that align with the RS splitter. You will likely need a flat head or phillips head screwdriver. Laying the splitter under the bumper to determine the holes helps immensely. Then bolt the splitter up to the leading edge of the bumper using M6-1.0 x 20mm bolts pointing upward, 1" OD fender washers ***on top and bottom*** of the bumper, and M6 nyloc nuts on top. Pics on next page.
BY THE WAY if you have a 3-piece splitter some of the holes will overlap between pieces (they use common bolt holes). The smaller pieces bolt underneath the larger top layer.

These holes are used for the splitter:



Splitter secured on bumper but not rear chassis.



11.) Install the back end of the splitter onto the chassis where the red clips used to be from step 8. Use the M6-1.0 x 50mm long bolts with 1" OD washers on bottom, and 1/4" small washers + nyloc nuts on top. Use the 30mm spacers over the bolts between the splitter and chassis. Tighten securely. (2 PICS)





12.) Locate the 1/4" holes on either end of the splitter just outside of the air ducts. Push your body screws through these holes and screw them into the speed nuts on the fender well. We provide these screws to hold the fender well from flopping around. No need to tighten much - just enough to keep the fender well stout. See pics!!



13.) If you haven't already for the splitter V1, drill 5/16" holes into your splitter where you want to mount your support rods. Then mount your support rods. Be sure to use blue threadlocker on the bolt threads (NOT THE HEIM JOINT THREADS).

14.) If you purchased a skid plate refer to the included separate instructions to install.



15.) Enjoy your new FS Performance Engineering aero! Tag us & use #FSPerformanceEngineering in the online world!!



For questions email costas@fspeinc.com or jim@fspeinc.com
Or call/text us at (661) 809-0954