



## **FS Performance Engineering**

Ford F-250 (2008-2010) Catalytic Converter Guard Installation Instructions

Professional Installation Recommended as Always - A car LIFT is HIGHLY Recommended

### **Tools Needed:**

- Ratchet
- 1/4" Socket
- 7/16" Socket
- 7/16" Wrench
- 1/2" Socket
- 1/2" Wrench
- 13mm Socket
- Extension

### **What's Supplied:**

#### **Parts:**

- (1) Main Plate
- (4) Side Plates - assembly
- (1) Front Bracket
- (1) Rear "Z" Bracket
- (1) Rear Plate
- (1) Transmission Bracket

### **Hardware:**

#### **BAG 1 - assembly**

- (21) 1/4"-20 x 1" HEX Bolts
- (21) 1/4"-20 Nyloc Nuts

#### **BAG 2 - front & "z" bracket + transmission bracket**

- (5) 5/16"-18 x 1" SECURITY Bolts
- (5) 5/16"-18 Nyloc Nuts
- (8) 5/16-1.25" Washers
- (1) 3/16" Security Bit

#### **BAG 3 - front bracket/rear plate onto main plate**

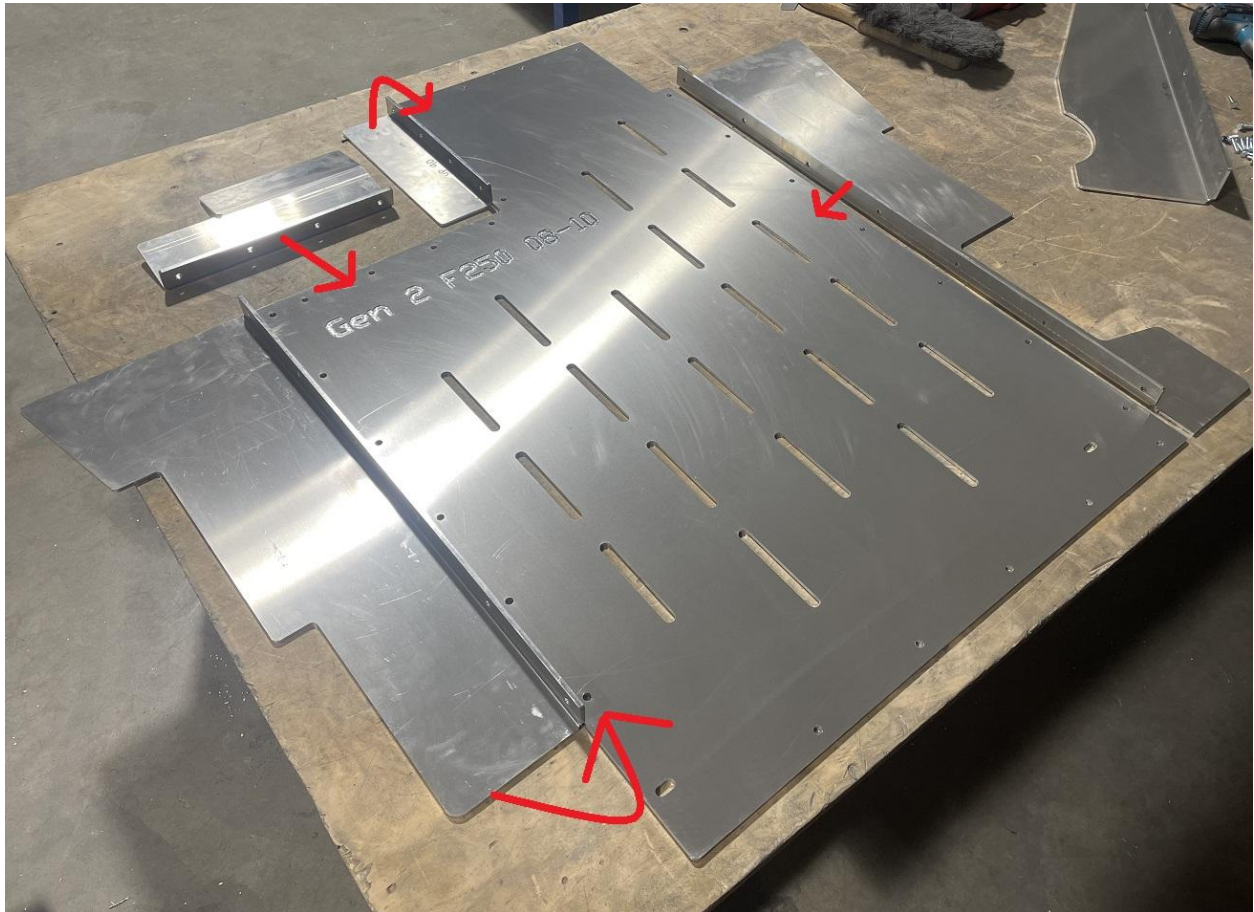
- (9) 1/4"-20 x 1" SECURITY Bolts
- (9) 1/4 x 1" Washers
- (1) Blue Thread Locker
- (1) 5/32" Security Bit

#### **BAG 4 - main plate onto crossmember**

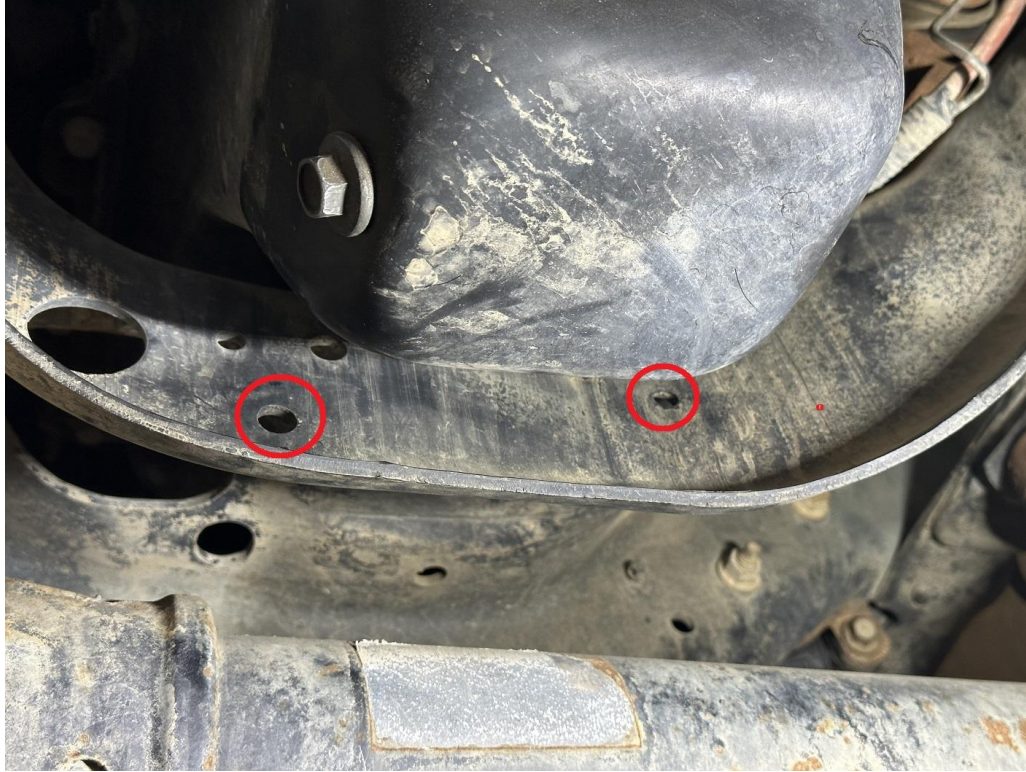
- (1) 5/16"-18 x 6.5" HEX Bolt
- (1) 5" Spacer
- (1) 5/16"-18 Nyloc Nut
- (3) 5/16 x 1.25" Washers

**Steps:**

- 1.) Begin by raising your Ford. Place it securely on jack stands. Or alternatively use a vehicle lift (highly recommended).
- 2.) Assemble your catalytic converter guard. There are 4 pieces that need to be bolted onto the top of the large main plate section using  $\frac{1}{4}$ "-20 x 1" Hex Bolts. Point the bolts upward and use  $\frac{1}{4}$ " nyloc nuts to secure them.



3.) Install your front bracket onto the vehicle. The front bracket mounts to the frame just in front of the oil pan / drain. Use TWO 5/16"-18 x 1" Security Bolts with nyloc nuts, with washers under the head of both. Use your 1/4" socket to hold the security bolt bit, and the 1/2" wrench to hold the nut. An extension on your ratchet may help you reach the bolt heads. Securely tighten.

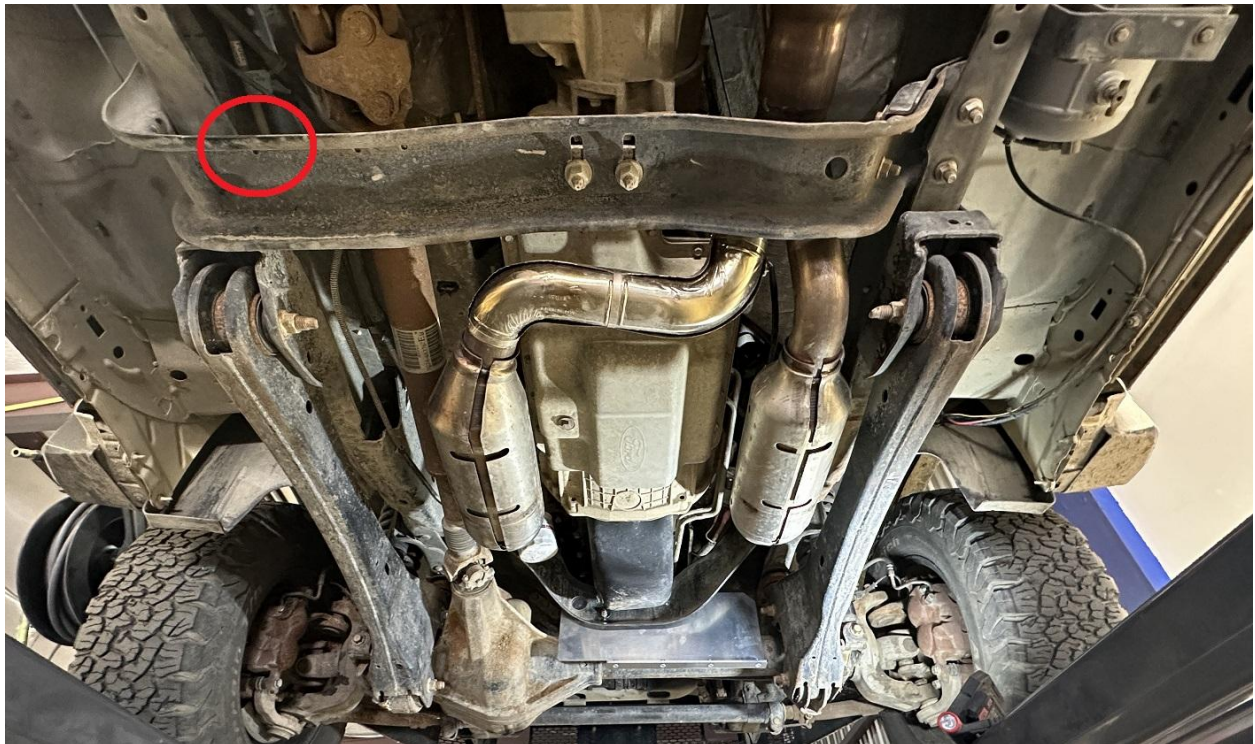


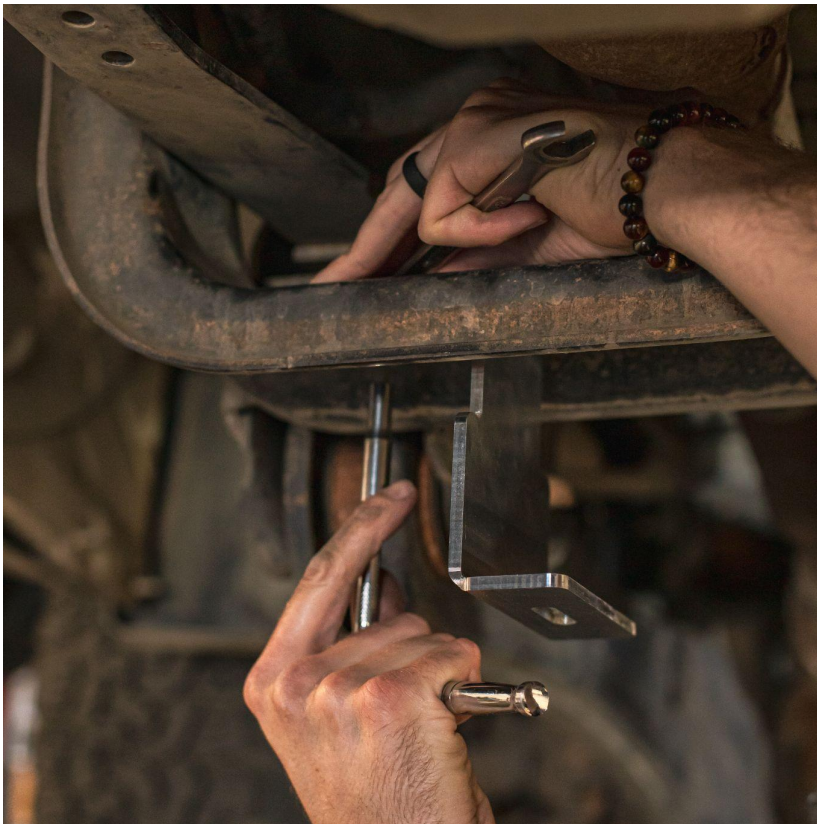
Point the bolts inward:





4.) LOOSELY install your rear “z” bracket as shown onto the transmission crossmember using ONE 5/16”-18 x 1” security bolt and 5/16” nyloc nut. Use 5/16x1.25 washers on top and bottom.

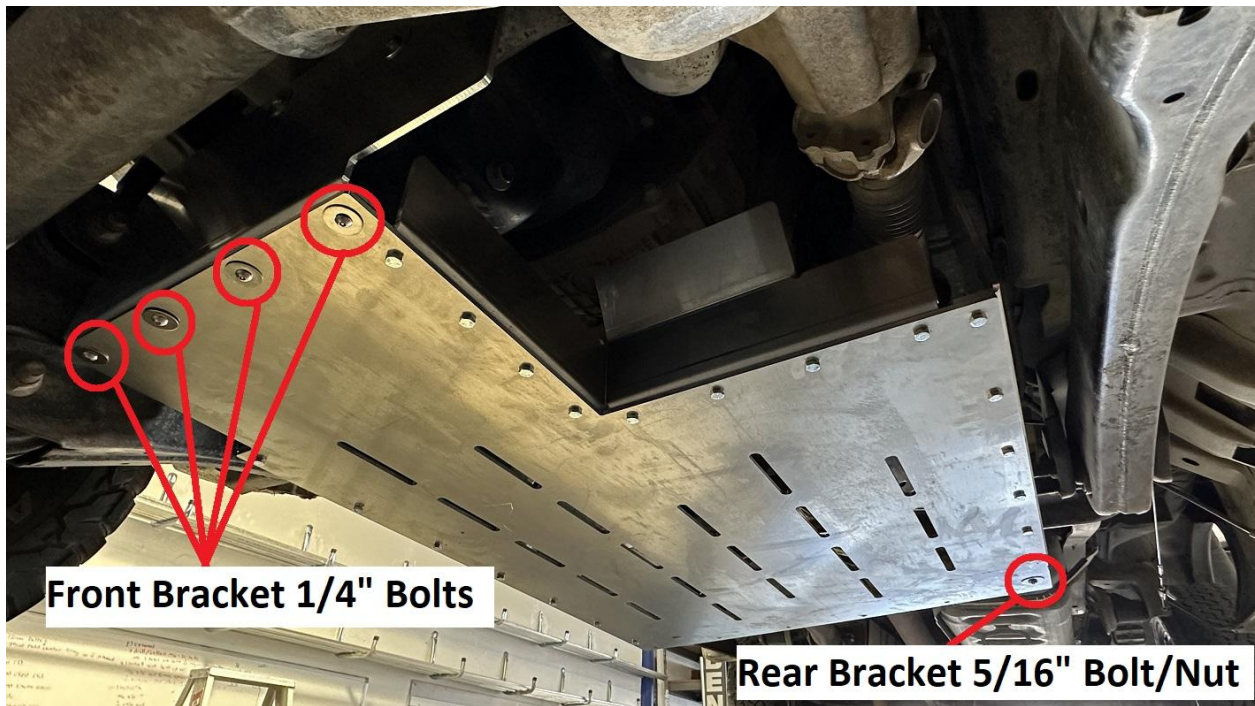




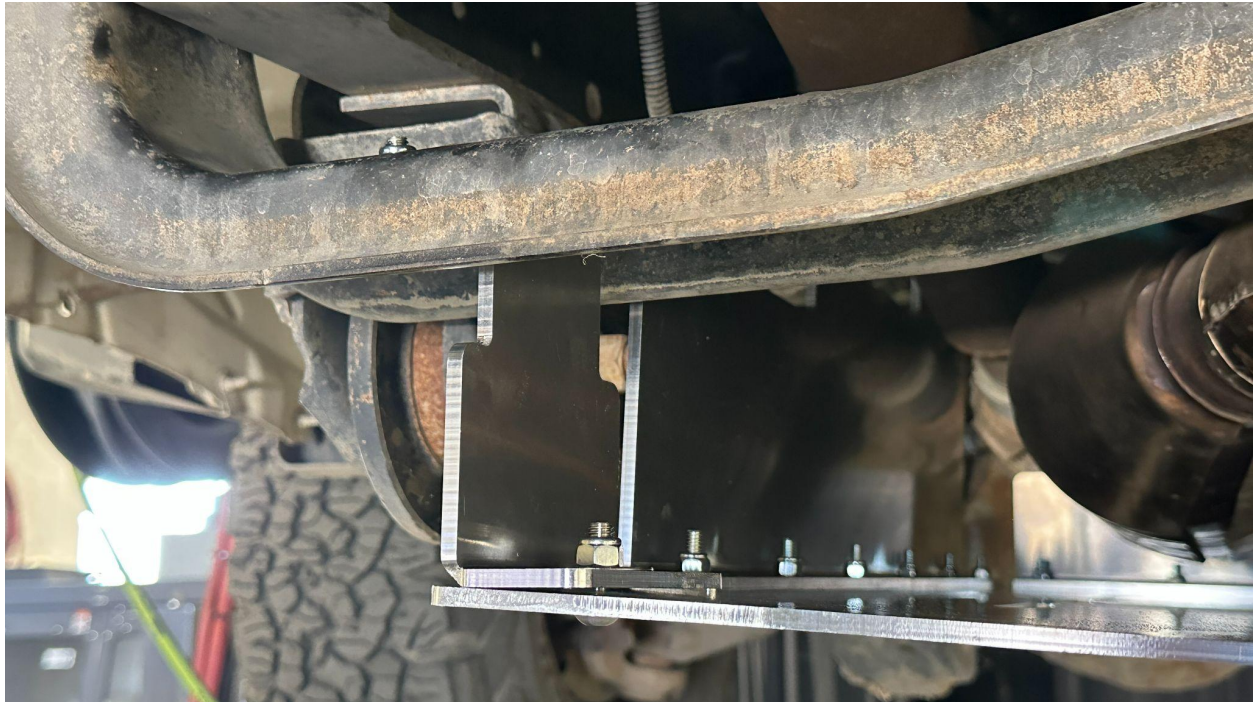
5.) Mount your main plate onto the front bracket and rear “z” bracket.

- The front bracket will accept (4) 1/4”-20 x 1” long security bolts with 1/4”x1” washers under the heads. Be sure to use blue thread locker on these bolts. Don’t over tighten - you are simply threading into pre-mounted rivet nuts.
- The rear “z” bracket will accept (1) 5/16”-18 x 1” security bolt with a nyloc nut, and 5/16”x1.25” washers under the head and nut. Securely tighten.

Front Bracket w/ pre-mounted rivet nuts:

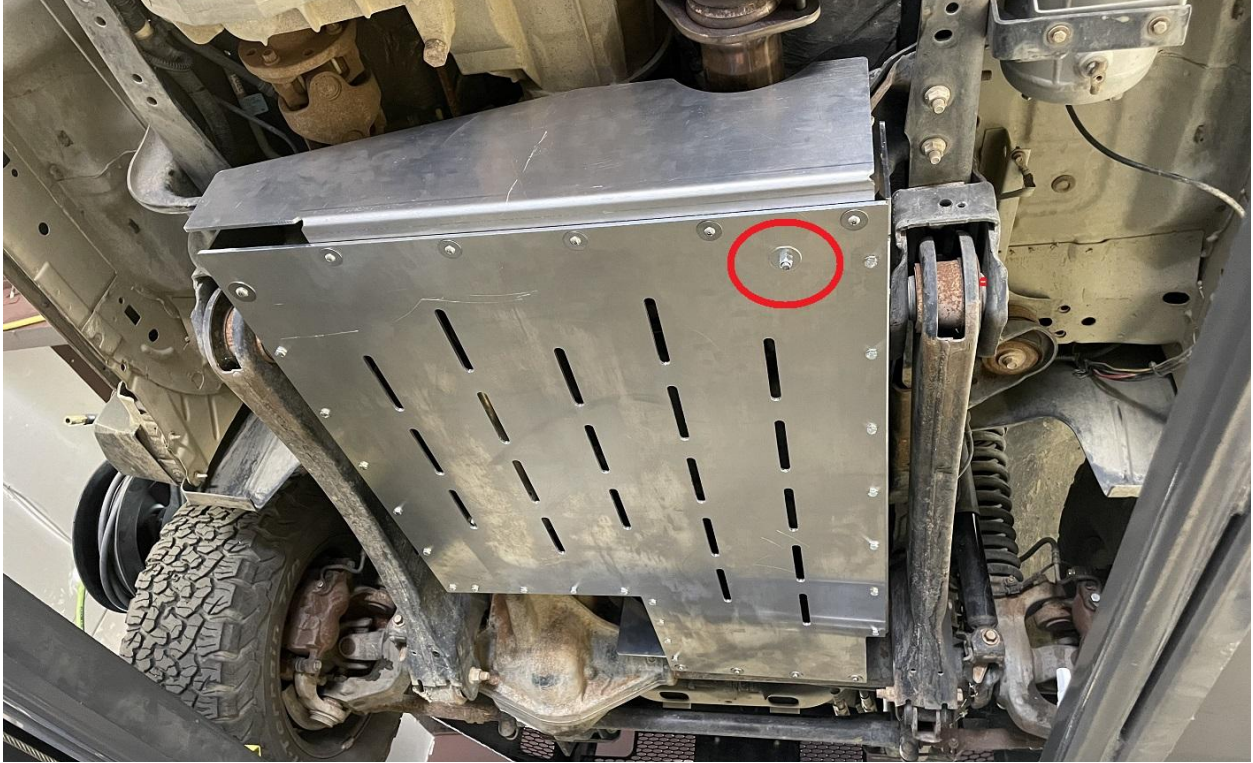


Rear Bracket:

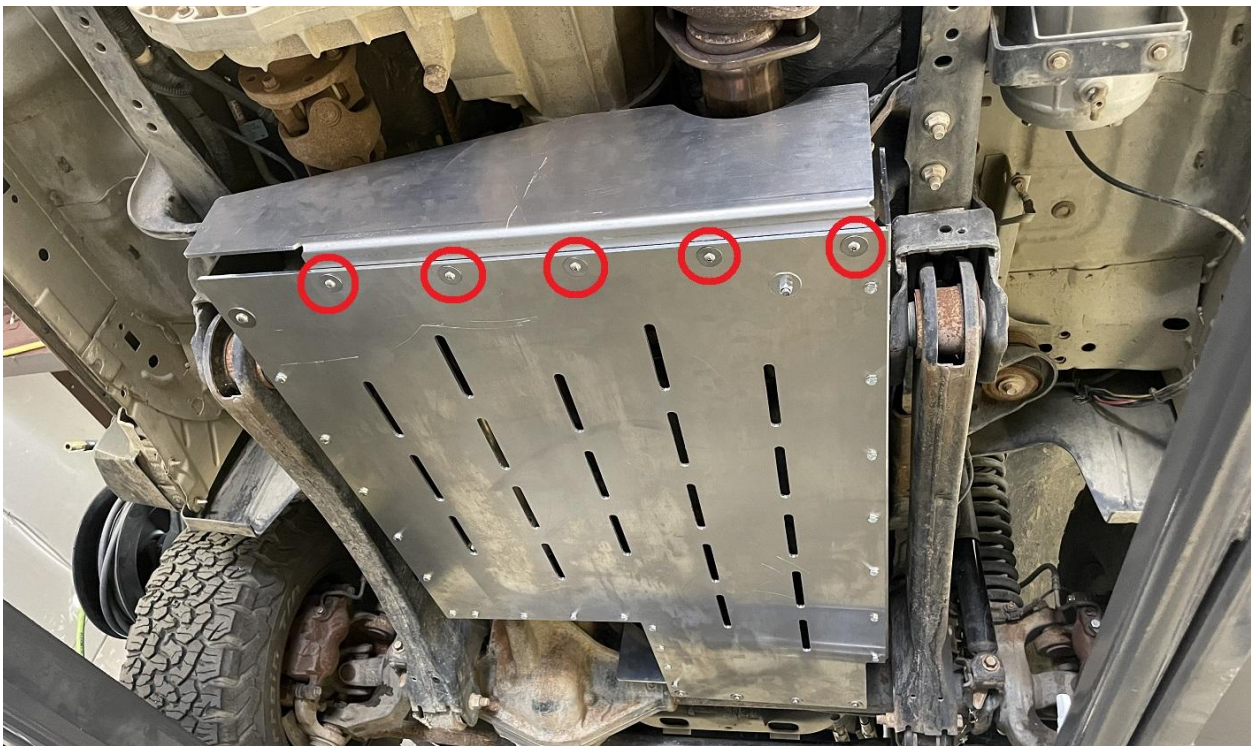


6.) Install your main plate directly onto the transmission's crossmember at the location shown. Use a 5/16"-18 x 6.5" bolt, 5" spacer, and 5/16" nyloc nut. There are THREE 5/16x1.25" washers that need to be used: 1 under the bolt head, 1 under the transmission crossmember but above the spacer, and 1 on top of the crossmember under the nut. Securely tighten.





7.) Install your rear plate using (4) ¼”-20 x 1” long security bolts with ¼”x1” washers under the heads. Be sure to use blue thread locker on these bolts. Don’t over tighten - you are simply threading into pre-mounted rivet nuts.

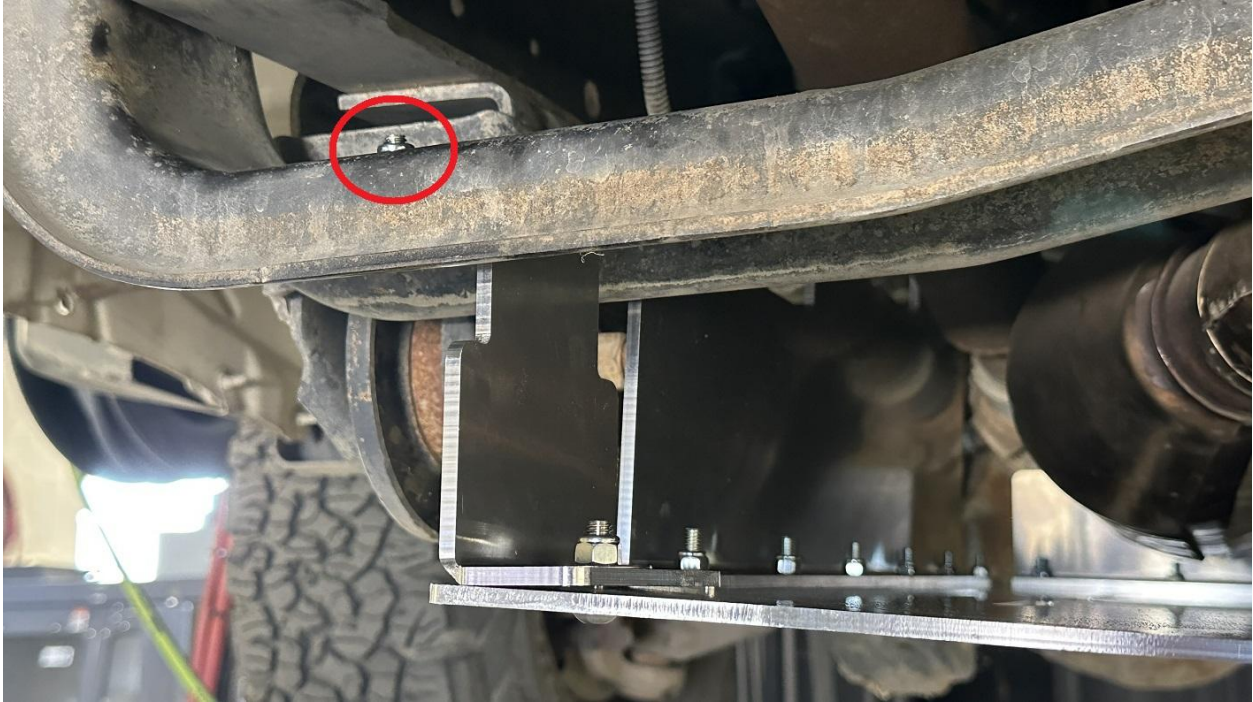




8.) Move to the front and identify the shown bolt on the transmission - this is located just behind the oil drain. Use a 13mm wrench to remove the bolt. Loosely install your small transmission bracket under the bolt as shown. Install a 5/16"-18x1" security bolt and 5/16" nyloc nut through the bracket onto the guard. Security tighten the 13mm bolt and 5/16" bolt.



9.) Lastly, go back to the “z” bracket you installed onto the transmission crossmember and tighten it (the one from step 4).



10.) Double check all bolts are secure and you are done! Feel free to tag us online using #FSPerformanceEngineering or #FSPEinc. If you have any questions don't hesitate to contact us.



PHONE: 661-809-0954 EMAIL: [costas@fspeinc.com](mailto:costas@fspeinc.com)  
THANK YOU :)