



## FS Performance Engineering

### Scion FRS/Subaru BRZ/Toyota 86 Side Skirt Installation Instructions

#### **Tools/Items Needed:**

- 10mm wrenches/sockets
- 5/16" wrench/socket
- 3/8" wrench/socket
- Cordless drill
- 7/32" drill bit
- Double sided mounting tape
- Flat head screwdriver
- Sharpie/marker
- Masking tape (optional)
- A friend (hopefully not a tool), but someone who is simply there to help
- Cleaner/wipes/rag

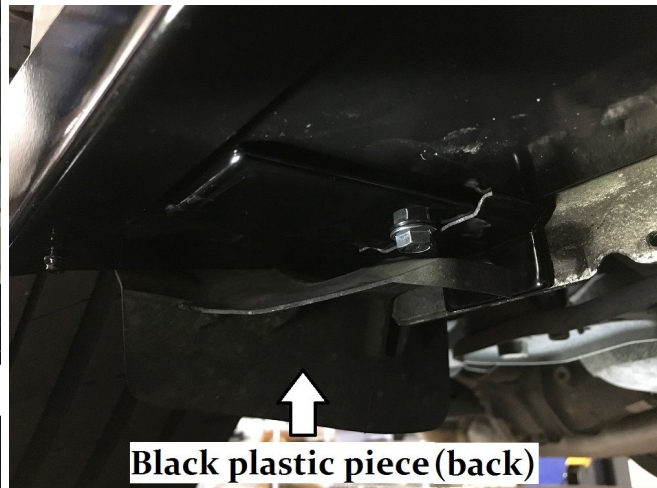
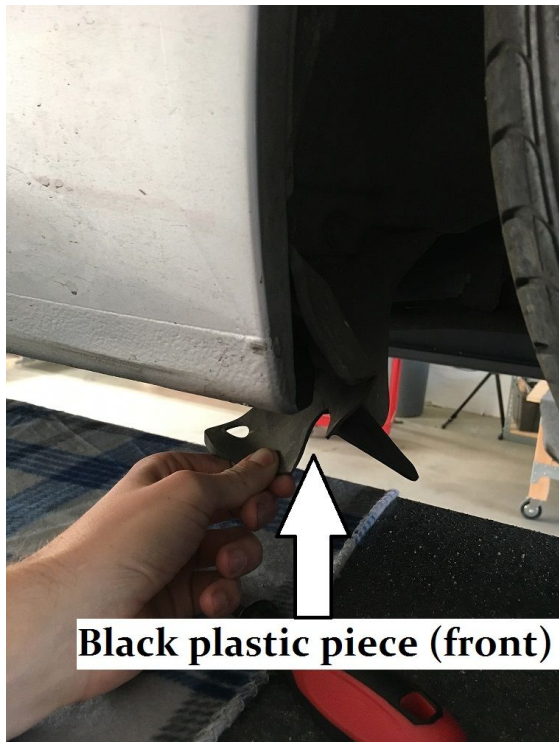
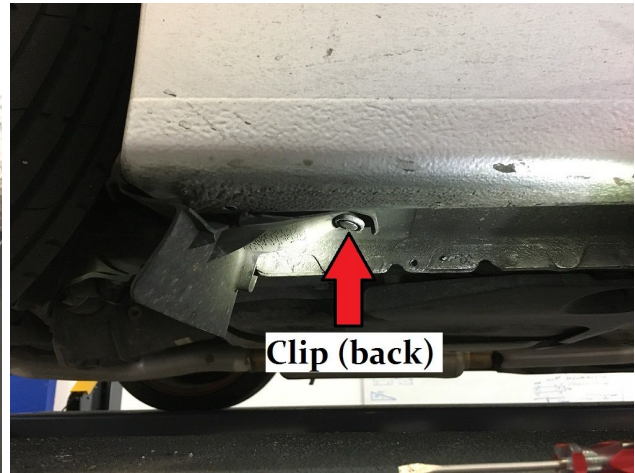
#### **Included in Kit:**

- (2) Side Skirts
- (10) Brackets
- (10) M6-1.0 x 16mm bolts (10mm head)
- (10) M6-1.0 nuts (10mm head)
- (10) 10-24 bolts (5/16" head, 7/8" long)
- (10) 10-24 nyloc nuts (3/8" head)

NOTE: Some pictures were taken from other installation instructions. You will see different cars in the instructions but installation is the same, don't worry!

**Steps:**

1. Raise car and secure with jack stands.
2. Beginning on one side of the car (we started on the passenger side), using a flat head screwdriver, remove the clips underneath the front and back of the rocker panel that hold the plastic pieces. You will eventually be cutting the rear plastic piece out of the way (or removing it, or taping it, up to you), and the front piece you will tape to the side skirt.



3. Attach one bracket to the first hole in the side skirt toward the front of the car. Push it in as far as it goes and only finger tighten.



4. While a friend holds up the back end of the side skirt, line up the bracket and skirt on the car on the pinch weld so the skirt is flush with the front of the rocker panel. Bring the bracket hole as low as possible, leaving room for the hole you will drill, and make a mark on the pinch weld with your sharpie. You might have to move the plastic pieces from step (2.) out of the way. Feel free to use masking tape so the sharpie shows up better against the rails.



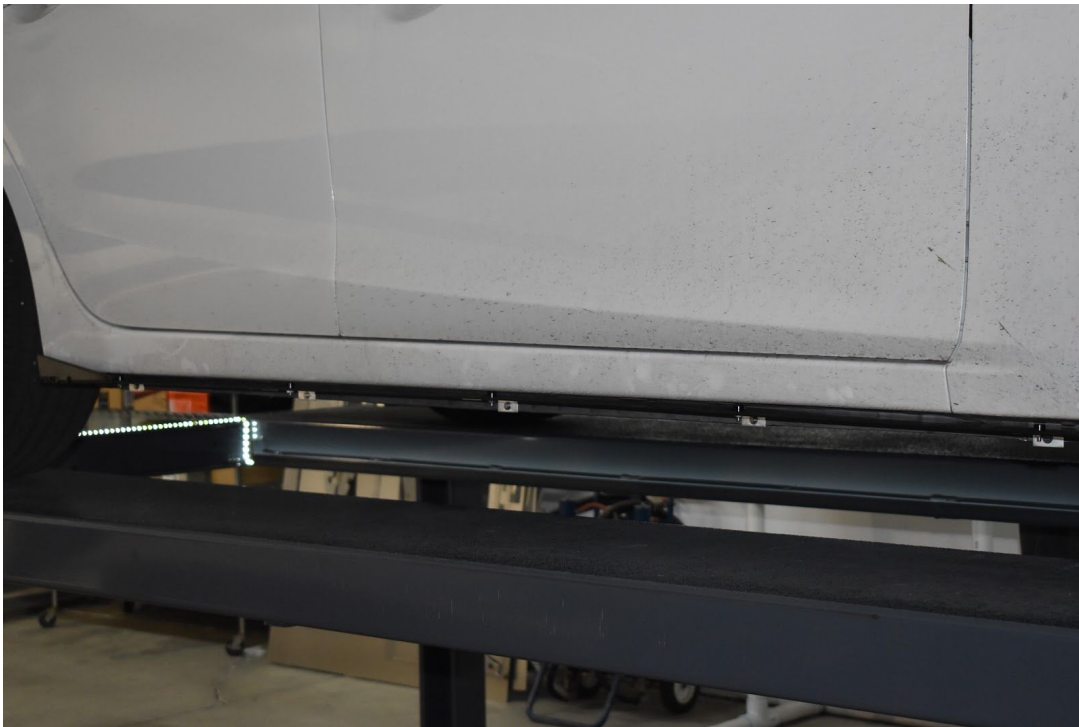
5. Drill a 7/32" diameter hole where you made your mark. These holes should be made as close to the bottom of the jacking rail as possible! You may be going through a couple layers of steel so be patient while drilling. Attach your side skirt using a 10-24 bolt and nyloc nut. Note: your pinch weld will probably look different.



6. Attach a second bracket onto the skirt finger tight just like the first one. Lift it up to the car and make a mark with your sharpie onto the rocker panel. Remove the skirt, drill that hole, and reattach the skirt with two brackets.

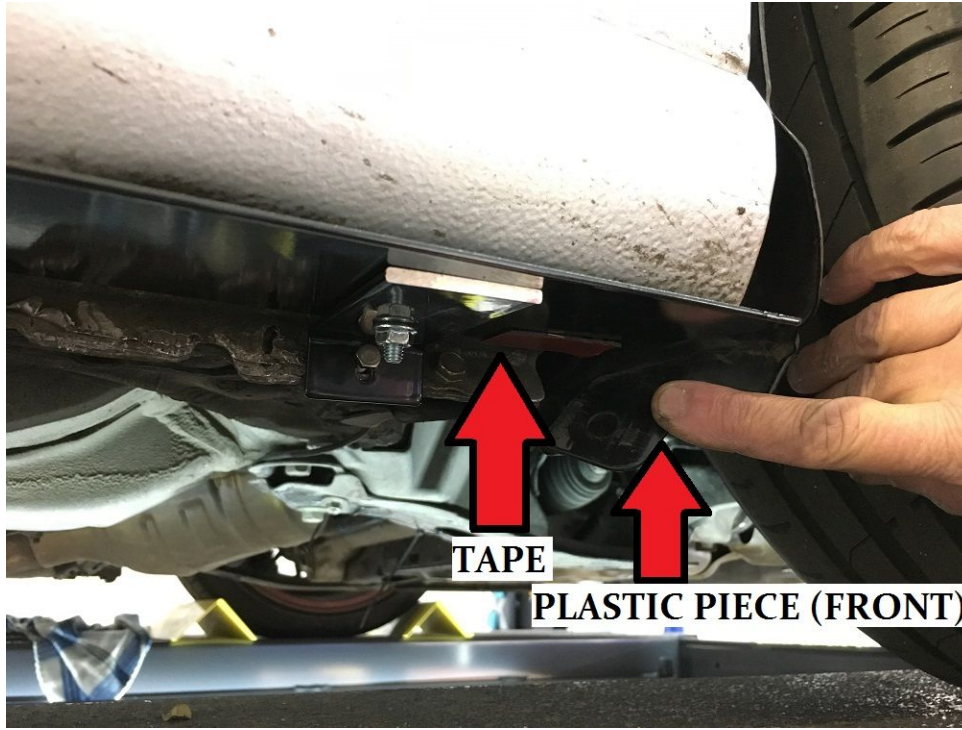


7. Install the 3 remaining brackets onto the skirt. Mark the holes for the rest of the brackets onto the pinch weld, remove the skirt, and drill out each hole. Reattach your side skirt onto the car and securely tighten each 10-24 bolt/nut. Finally adjust your side skirt so it is where you want it and securely tighten each M6 bolt/nut with your 10mm wrench. Use needle nose pliers to hold the threads on the bolt while tightening the nut.





8. Tape the plastic piece at the front rocker panel to the side skirt. We cleaned the plastic first then taped the front plastic piece, and cut the rear plastic piece (others have just removed the rear plastic piece or even taped it underneath just like the front).



9. Repeat that whole process on the driver's side of the car and enjoy your new FSPE side skirt extensions! Be sure to send us pictures when it is installed.



For questions email [costas@fspeinc.com](mailto:costas@fspeinc.com) or [jim@fspeinc.com](mailto:jim@fspeinc.com)



Or call/text us at (661) 809-0954