

DODGE CHARGER WICKERBILL INSTALLATION INSTRUCTIONS

Installation is straight forward, and hopefully fun!!

Tools Needed:

- Friend/helper
- Masking tape
- Small drill bit (any size around a 1/8")
- 25/64" drill bit
- Drill
- Rivnut installation tool
- Marker/pencil
- 5/32" (or 4mm) allen head wrench
- Scissors & cleaning supplies
- Measuring tape (long, flexible recommended) &/or small level

Included in Kit:

- (1) Wicker Bill
- (1) 2nd Layer (whether it be aluminum or plastic)
- (1) Vinyl Patch if ordered wicker bill with a cut out
- (12) 1/4"-20 Rivnuts (two are extra)
- (10) 1/4"-20 x 1" Countersunk Stainless Steel Bolts
- (10) 1/4" Countersunk washers

Steps:

1.) Begin by laying masking tape onto the entirety of the OEM spoiler. Feel free to place tape on the trunk as well to provide additional protection against potential scratching.



2.) Use your measuring tape to find the center of the wicker bill. The reverse camera is centered as well so feel free to use a level to locate the center of the wickerbill. Then mark the center.



3.) Find the center of the wickerbill, place blue tape, then make a mark (we marked directly on our raw aluminum, don't do that). With help from a friend center the wickerbill onto the OEM spoiler by looking through the logo. On both sides of the car the wickerbill should be even - this means it needs to sit at the same spot on the OEM spoiler on each side. Have one friend hold the wickerbill and assure that this is the case on each side, then mark the two holes nearest to the center. (3 Pictures)





4.) Check that the two holes are spaced upward equally from the bottom of the trunk. Double check fitment a few times by lining up the wickerbill on the OEM spoiler. Once you are confident that the two holes are correct, drill them out with your small drill bit ($\sim 1/8''$). **FOR ALL HOLES BEING DRILLED BE SURE NOT TO GO THROUGH THE OEM SPOILER AND HIT THE OTHER SIDE.** Take your time!!!



5.) Use your 25/64" drill bit to open up the holes. Then remove the tape around just those holes.



6.) Install two of your rivnuts with your rivnut tool. There are many different types of rivnut tools. If you need advice on how to use one, use online sources.



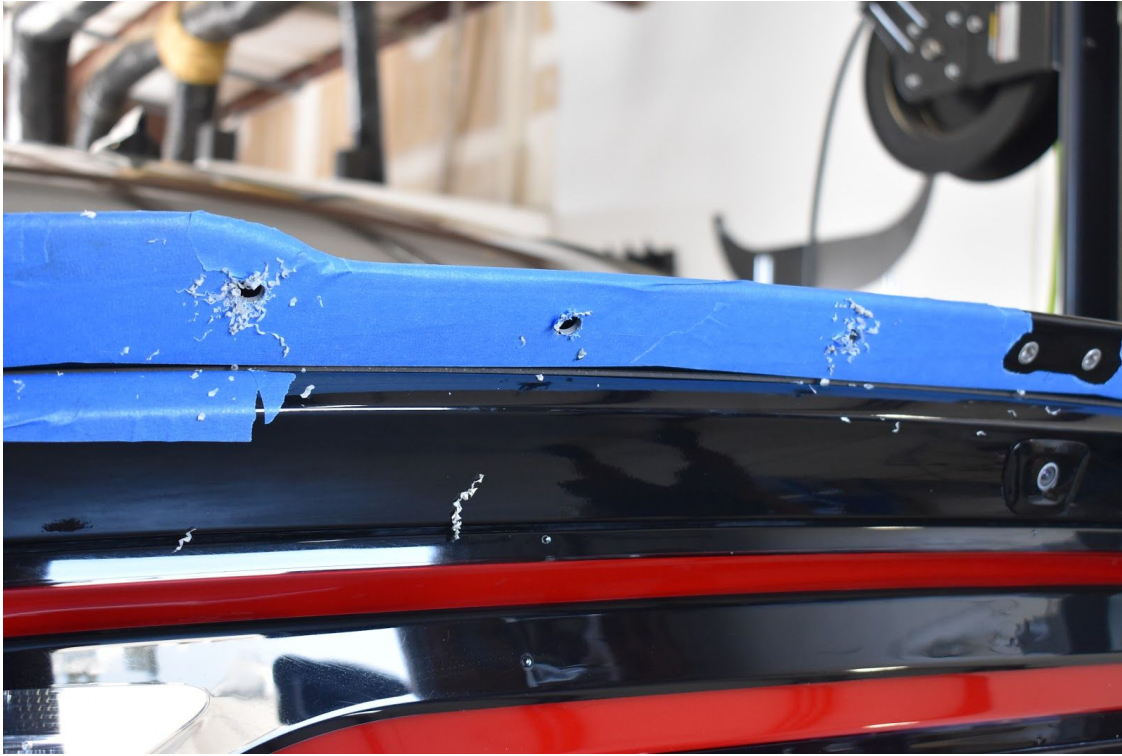
7.) Install the wickerbill onto the OEM spoiler by threading two of the bolts into the rivnuts. Use the countersunk washers.



8.) Have your friend/helper push one side of the wickerbill onto the OEM spoiler while you push the other side. Assure the wickerbill is positioned at the same spot on both sides of the OEM spoiler. If it is not, loosen the center two bolts and adjust accordingly, then retighten them and push both sides of the wicker bill. Mark all of the remaining holes.



9.) Once all holes are marked, remove the wickerbill. Drill out each hole with your small drill bit, then with the larger 25/64" bit. Then remove tape and install rivnuts into each remaining hole. Our test wickerbill has a lot more holes than yours! Don't worry about that :)



10.) Before installing the wickerbill feel free to lay vinyl onto the OEM spoiler where the emblem cut out on the wickerbill lands. If your wickerbill came with an aluminum or carbon center 2nd layer, lay vinyl onto it where the center cut out meets the 2nd layer. If your wickerbill came with a plastic center 2nd layer place vinyl onto the OEM spoiler behind the 2nd cut out.

11.) The aluminum or carbon 2nd layer sits in front of (toward front of the car) the wickerbill. A plastic center would sit behind the wickerbill because you can see through it. Install your wickerbill using the supplied bolts and washers. The 2nd layer has common bolt holes with the wicker bill. We recommend installing all bolts loose, then tightening each bolt.

12.) Enjoy your new wicker bill!!!!

