



FS Performance Engineering
BMW E46 M3 Side Skirt Extensions Installation Instructions

Tools Needed:

- 10mm wrench
- 10mm socket / ratchet wrench
- Drill
- ¼" drill bit
- Clip remover (like shown in pictures for installation)
- 4mm or 5/32" allen wrench
- 7/16" wrench
- Masking tape
- Cleaning spray and rag
- Marker / pencil

Included in Kit:

- (2) Side skirts
- (2) Flares/fins
- (20) M6-1.0 x 20mm hex flange bolts
- (20) ¼" ID, 1" OD fender washers
- (20) ¼" small washers
- (24) M6-1.0 nyloc nuts
- (4) M6 black countersunk washers
- (4) M6-1.0 x 16mm SS countersunk bolts

Steps:

- 1.) Raise the entire car and secure it with jack stands.
- 2.) Start on one side of the car. We started with the passenger side. When done, move to the other side. Installation is very straight forward. You're aligning the side skirts under the rocker panel, marking hole locations, and drilling them. Start by placing the skirt next to the rocker panel and place tape where the hole locations will be marked.



3.) With help from a friend (or wooden blocks in our case), align the side skirt with the underside of the rocker panel. Keep it from moving and mark the holes that need to be drilled. Make sure the holes make sense where they are. The rear of the side skirt should match up with the rear of the rocker panel. They both “curve” in the same way (2nd and 3rd pictures). The front hole should be checked to assure it lands under the rocker panel.

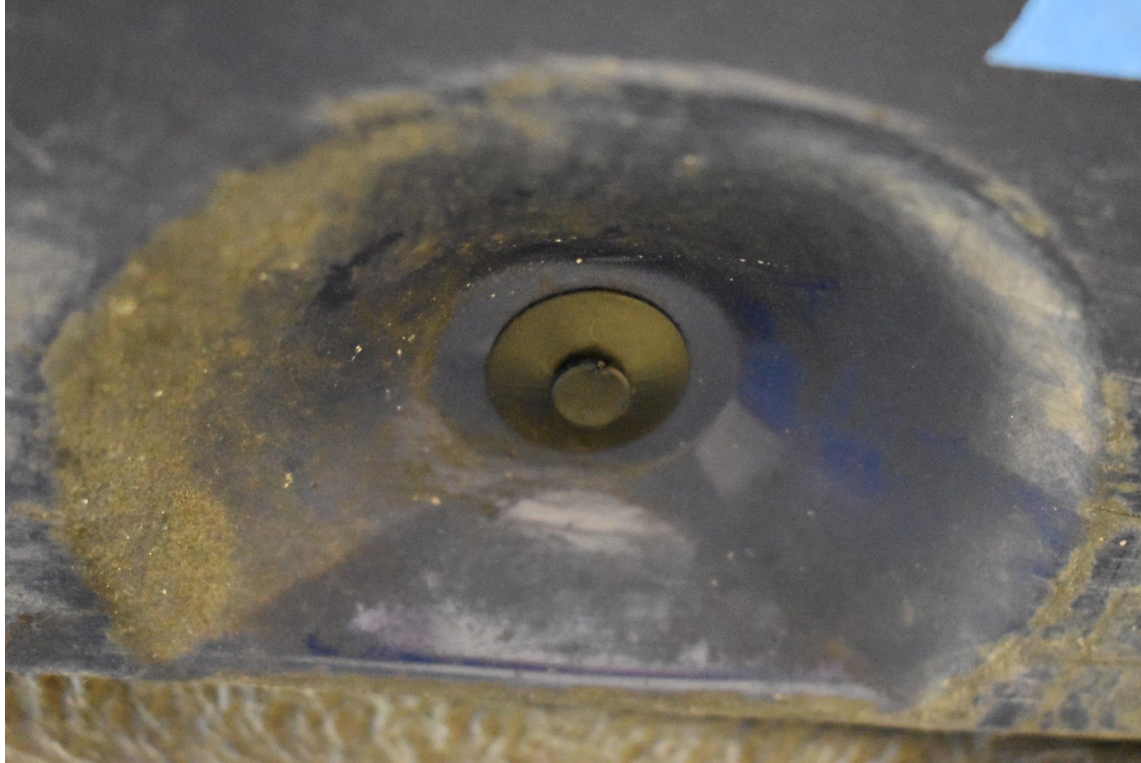




4.) Drill into the rocker panel at the hole locations you marked with a 1/4" drill bit. There should be 10 holes drilled on each side of the car.



5.) The hard part. Remove the clips that hold the rocker panel onto the car (underneath the rocker panel). There are several! First pic shows what the clips look like, 2nd picture shows the tool to remove them, and the 3rd and 4th pictures show the piece at the rear of the rocker panel that needs to be removed in order to gain access to the side skirt hole at the rear.

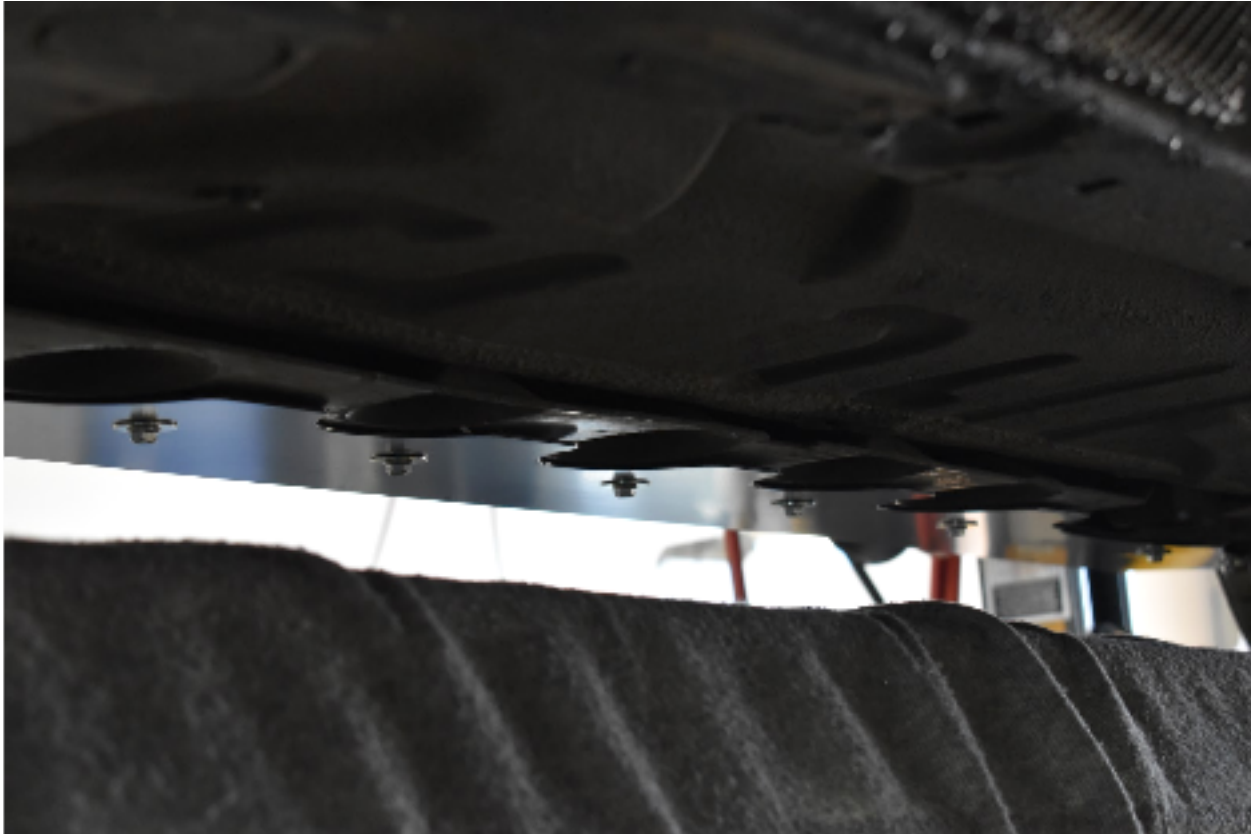






6.) Once the clips are removed, install a side skirt into the holes you made (skirts are symmetrical). Use the M6-1.0 x 20mm bolts pointing upward with 1" OD fender washers under the heads, and 1/4" small washers + nyloc nuts on top. Tighten all bolts/nuts securely.

FOR THE REAR MOST HOLE: feel free to push a bolt down from the top. It's a b*tch to get your fingers and wrench in there.



7.) Push all clips back in.



8.) Install your fins. Use the M6-1.0 x 16mm countersunk bolts and washers, and nuts on bottom. This is easy.



9.) You are done!!! Enjoy your new FS Performance Engineering aero! Be sure to use #FSPerformanceEngineering in the online world.



For questions email costas@fspeinc.com or jim@fspeinc.com
Or call/text us at (661) 809-0954