



## Quick Charge Station

### Overview

- Fast-charge any compatible vehicle
- 0 to 80% in less than 1 hour
- Multistandard (CHAdeMO, CCS and AC Type-2 compliant)
- DC and AC simultaneous charging
- TFT color display (for user interface and publicity)
- Network integration (OCPP or proprietary protocol)
- Built-in communications (3G; LAN; Wi-Fi)



Fast Charging



User-friendly



Communication &amp; Management



Multi-standard

### AC and DC plug-in charging systems



CCS



CHAdeMO

AC ~

### Main features

- Multiple standards
- Multiple outputs
- DC up to 25 kW
- AC up to 22 kVA
- High efficiency: > 94%
- High power factor: 0.98
- Simple plug&play installation
- Standalone or network integration
- Local and remote control and monitoring
- C4 corrosion protection

### Product description

The **QC20** is a Quick Charging station able to charge all EVs with CHAdeMO, CCS and AC Type-2 (fast) charging standard compliance with a maximum DC output power up to 25 kW.

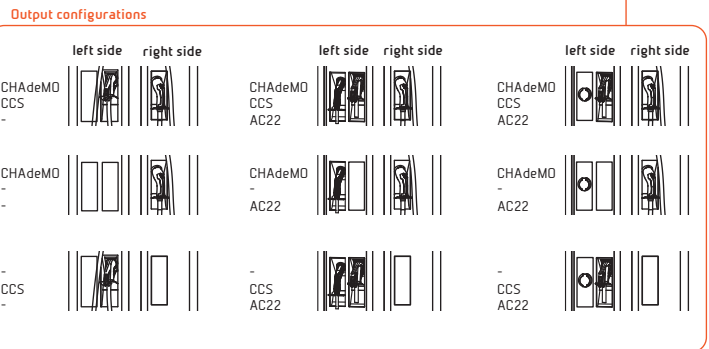
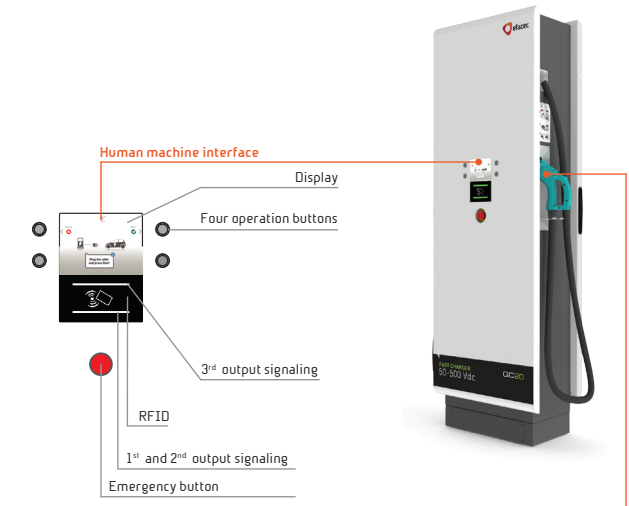
After user identification (if authentication is required), by simply choosing the charging standard compatible to your vehicle and coupling the charger's output plug to the EV, you will have a fast secured and proven charging process. The battery charging status is displayed and the charging cycle finishes by itself or can be terminated by an user command.

Different output options are available, like the basic single DC output, dual DC output or even triple DC+AC outputs, in a single cabinet or bundled with a wired charging interface kiosk.

The **QC20** includes Efacec's power electronics unique design, resulting in top specifications for DC fast charging. Higher power output with best power factor and efficiency.

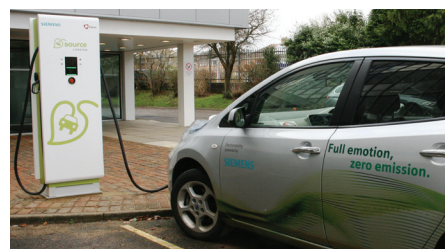
Technical data		CE
<b>AC Nominal Input for the DC Output</b>		
Phases / lines	3 phases + neutral + PE	
Voltage & frequency	400 Vac ± 10 %; 50 Hz	
Nominal input current & power	32 A, 22 kVA	
Efficiency	> 94 %	
Power factor	0,98	
<b>AC Nominal Input (Optional)</b>		
Phases / lines	1P or 3P + neutral + PE	
Voltage & frequency	400 Vac ± 10 %; 50 Hz	
Nominal input current & power	Up to 32 A, 22 kVA	
<b>DC Output</b>		
Voltage	50 Vdc to 500 Vdc	
Current	0 to 50 A	
Nominal Power (@ 400V)	Up to 20 kW	
Maximum power	25 kW	
<b>AC Output (optional)</b>		
Voltage	230 V or 400 V	
Current	from 16 A up to 32 A	
Nominal Power	from 3,7 kVA up to 22 kVA	
<b>General Specifications</b>		
Equipment	Multi-standard DC outputs (Mode-4), with optional AC (Mode-3)	
Communication with EV	JEVS G104 (CHAdeMO) IEC61851-23 PLC (CCS / Combo-2) IEC61851-1 (AC)	
DC Plugs	JEVS G105 (CHAdeMO) Combo T2 (CCS / Combo-2)	
AC Plug (or socket)	IEC62196 Type-2	
Human Machine Interface	By default	
Display	6.4" TFT Color screen	
RFID system	Mifare (Classic, DesFire EV1) or others on request	
Communication	3G (GSM or CDMA)   LAN   Wi-Fi	
Communication Protocols	OCPP (1.2; 1.5) and others	
Place of installation	Indoor/Outdoor	
Altitude	Up to 1000 m	
Protection degree	IP54   IK10	
Operating Temperature	-25 °C to +50 °C	
Optional Cold Option	-35 °C to +50 °C	
Storage Temperature	-40 to +60 °C	
Humidity Range	5 % to 95 %	
Noise Level	<55 dB in all directions	
Dimensions (W x D x H)	630 x 457 x 1922 mm	
Weight	325 Kg	

Configurations



Applications

- Restaurants
- Shopping centers
- EV Infrastructure and operators
- EV fleet (private and public)
- EV dealers and service providers



Proudly Supplied & Supported By:



Main Office:  
295 Lincoln Rd  
Henderson, Auckland 0654  
NEW ZEALAND

Phone: +64 9 836 6744 | e-mail: sales@powertech.co.nz | web: www.powertech.co.nz



Due to our policy of continuous development, specifications may change without notice. Not valid as a contractual item.