



HYDROGEN WATER UNIT HYDRA DELUXE



User Manual

**CUSTOMER SERVICE:
(509) 519 - 2545**



HEALTHY HYDRATION

Product Warranty Card

Username:

Purchase Date:

User Address:

Product Name or Model

Local Distributor Stamp

Product Series Number

Service Center:

Address:

Phone Number:

Note: Please keep the card properly and contact our special maintenance center with this card and the ticket when you need maintenance

Product Warranty Registration Card

User Name:

Purchase Date:

User Address:

Product Name or Model:

Local Distributor Stamp:

The Hydra-Deluxe unit adopts a robust filtration system with hydrogen dissolution technology, and a rare earth thick film heating technology and other emerging technologies and is one of the only hydrogen water units on the market without installation to a water source.

The Hydra-Home unit effectively filters out harmful substances in water to ensure water safety, and at the same time, it is rich in beneficial mineral elements and generates high concentration of hydrogen-rich water through physical hydrogen dissolution technology, so that you can drink safe and healthy drinking water every day.

The Hydra-Deluxe also offers 3 seconds quick heating, anti scald child-lock design, so that you can use it more easily and safely as well as UV light protection against bacteria.

The Hydra-Deluxe can be placed in various places such as living room, bedroom and office, as it needs no external faucet water connection making it the simplest way to get your daily composition of hydrogen water!

Product Tools & Assembly:

This Hydra Deluxe contains the following parts:

Hydrogen Water Hydra-Deluxe Unit	1 Unit
Water Disposal Pan	1 Set
User Manual	1 Copy

Troubleshooting:

After a fault occurs, please remember the code and turn off the power.

Fault	Reason
The unit cannot produce water	<ol style="list-style-type: none"> 1. Check whether the tank has water. 2. Check whether the cartridge is blocked- due to too much dirt
Water flow is smaller	Check whether the cartridge element is too dry or used beyond the service life
Water does not taste good	Check whether the cartridge element is not replaced after used beyond the service life
Water seepage at the screw joint	<ol style="list-style-type: none"> 1. Whether the main parts on the unit have been disassembled before. 2. Whether the seepage part's screw is tightened, heavy teeth, or slipped. 3. Is this silicone sealing ring at the seepage place aging or damaged?
Electricity leakage and induced electricity of units body	The unit is grounded poorly or the unit has leakage
The unit does not produce hot water	<ol style="list-style-type: none"> 1. Check whether unit is connected to the power source 2. The temperature control protector on the heating barrel is not reset
The unit does not produce hydrogen water	<ol style="list-style-type: none"> 1. Whether hydrogen production has been completed or Hydrogen-rich water tank has no bubbles. 2. Is there any water in the pure water tank?

List of Hazardous Substances

In order to meet the national laws, regulations and other requirements related to the restriction of hazardous substances in electrical and electronic products,

our company, after a detailed internal examination and classification by component, declares the following:

Electrical Product Name: Hydra Deluxe Unit						
Part Name	Hazardous Substance					
	Lead (Pb)	Mercury (Hg)	Calcium (Ca)	Hexavalent Chromium (Cr(VI))	Polybrominated biphenyls (PBB)	Polybrominated diphenyl ethers (PBDE)
Cartridge	○	○	○	○	○	○
Water Tank	○	○	○	○	○	○
Solenoid Valve	○	○	○	○	○	○
Self-priming pumps	○	○	○	○	○	○
Pumping Pumps	○	○	○	○	○	○
Silicon, rubber seals	○	○	○	○	○	○
Computer version components	X	○	X	○	○	○
Other metal Structural Parts	X	○	○	X	○	○
Power Adapter	X	○	○	○	○	○
Plastic Parts	○	○	○	○	○	○
Wires	○	○	○	○	○	○
Water Tank	○	○	○	○	○	○
Power Cord	X	○	○	○	○	○
Packaging and printing parts	○	○	○	○	○	○

Index

Index Page.....	01
Introduction to Hydra Deluxe.....	02
Precautions.....	03
Important Features & Components.....	04
Product Diagram	05
Product Function Introduction.....	07
Operation Instructions.....	08
Operations.....	10
Hydra Deluxe Cartridges.....	12
Cartridge Types & Error Code Chart.....	13
Malfunction Repair.....	14
Warranty Terms.....	14
Troubleshooting.....	15
List of Hazardous Substances.....	16
Warranty Card.....	17

Important Features & Components:

Product Name	Hydra Deluxe Unit
Product Model	HH Deluxe 2023
Rated Voltage	110V
Rated Frequency	60Hz (Hertz)
Rated Power	1580 Watts
Heat Producing Power	1500W
Power Consumption	1.5kWh/24h
Hydrogen Concentration	≥3000ppb
Hot Water Production Capacity	18L/h (≥124°F / 90°C)
Water Flow	15.6L/h (Liters per Hour)
Working Pressure	0.4~0.6 MPa
Accepted Water Type	Tap Water and Filtered Water
Accepted Water Temperature	41-100.4°F / 5-38°C
Water Tank Volume	6L/2.5L (Liters)
Net Weight	9.8kg
Product Size	18.31" x 9.45" x 16.93" (Inches) OR 465 x 240 x 430 (mm)
Product Executive Standard	GB 4706.1-2005 GB 4706.19-2008

Cartridge Types:

Cartridge Abbreviation	Cartridge Type	Function	Suggested replacement cycle
PAC	Folded PP cotton activated carbon rod composite filter	Removal of impurities such as silt, rust, sand, suspended solid and blood worm; removal of residual chlorine and absorption of disagreeable tastes and odors.	6-12 Months
RF	Robust filtration cartridge	Filter precision of 0.0001μm, removal of incrustation and heavy metal	12-24 Months
CF	Rear Composite Carbon Rod	Further increase the taste	6-12 Months

Error Codes:

Error Code	Reason	Solution
E1	The water tank is short of water, or the water flow switch is not inserted properly resulting in an open circuit or not set on appropriately.	Check if the water tank is short of water or placed in place. Check if the water flow switch is disconnected or adjustment is needed.
E2	Inlet water temperature NTC Open circuit	Plug-in terminal or replace heating parts
E3	When the hydrogen-rich water tank detects a low level or water shortage	Unscrew the top cover of the unit and add the right amount of pure water
Display panel flicking	The hydra deluxe has not been used for a long time to achieve a full state of filtered water. Water tank floating switch failure or not inserted well off	Re-energize after power failure. Reinsert or replace the float switch

Malfunction Repair:

If your Hydra-Deluxe fails, please refer to the help information from the table below. If the problem cannot be solved, please contact the local maintenance department.

If the cord is damaged, to avoid danger, it must be replaced by a professional maintenance worker. Avoid squeezing, folding, knotting, or damaging the power cord. It must be installed by professionals, disassembling the parts on the product by yourself may damage the product or risk of electric shock, moving and handling by yourself may easily cause damage to the Hydra Deluxe by improper operation

Warranty Terms

1. From the date of purchase of the Hydra Deluxe warranty for 1 year, any quality problem will be repaired free during the warranty period.
2. Please keep the purchase record and warranty card for any future maintenance, after the use of the unit, it will have using trace or normal supplies, those parts cost are responsible by the customer.
3. In the warranty period, if the unit is improperly used or disassembled, it is not covered by the warranty, but can provide paid maintenance services.

Precautions

Please read the following precautions before using the Hydra Deluxe.

- ❖ The Hydra Deluxe Unit adapts to the power supply: 110V/60Hz, the power 1500W, make sure the power supply and power cord adapt to the unit before installation. Use no less than 125V/15A power socket, it is strictly prohibited to use a universal plug or use a power socket with other electrical appliances at the same time.
- ❖ It is strictly forbidden to use dripping water or wipes with smell or corrosive liquid to clean the unit. Seepage of water into the inside of the Hydra Deluxe may lead to danger and damage.
- ❖ The Hydra Deluxe, use is only recommended for children 8 years old and above, to recognize the use of panel and must understand the use of the unit and precautions before use, beware of burns!
- ❖ The unit's applicable ambient temperature is 41-104 Fahrenheit, and is **strictly prohibited to be used outdoors!** Place the unit on a flat surface, platform must be horizontal and is strictly forbidden to place the water box overhanging on any surface, it should be placed horizontally on the counter or on a sturdy flat surface.
- ❖ When moving or transporting the Hydra Deluxe, please be sure to enable the unit's "strong drain" function to completely drain the internal water tank before transporting otherwise the overflow of the water in the process of moving will lead to damage to the unit.!
- ❖ When getting water, it is strictly prohibited to put the spout of the Hydra Deluxe into the cup, which will lead to safety hazard!
- ❖ The small cover on the right on the top of the unit is the hydrogen making tank and must be added with pure water or distilled water, **do not use tap water, mineral water, or filtered water or other liquids**, otherwise it will cause direct damage to the hydrogen water making components.
- ❖ It is strictly prohibited to add turbid water, milk, juice, ice and carbonated beverage into the original water tank of the unit (or add fresh tap water directly without pouring out the concentrated water tank after the water change light is on), which will directly lead to the damage of the cartridge and others.
- ❖ Various water temperatures of this unit will be affected by the use of voltage, ambient temperature, raw water temperature and altitude, such as deviation is normal.
- ❖ The effective life of the purification filter will change with the use of water and local tap water quality, not necessarily to the filter replacement reminder to change the cartridge, it is recommended that 6-12 months to replace all three filters and can be purchased at Healthyhydration.com

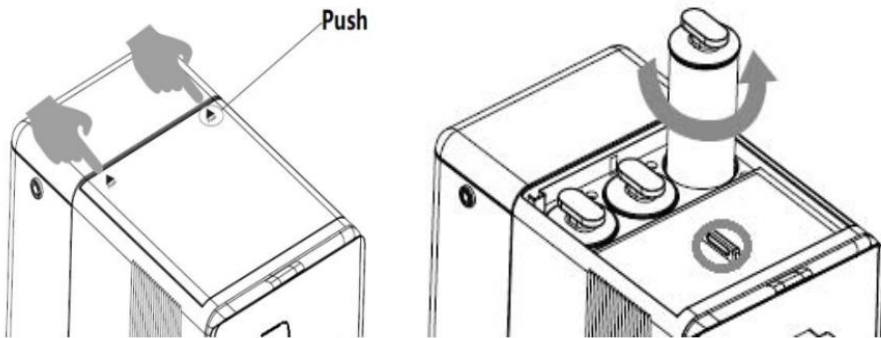
Hydra-Deluxe Filter Cartridges

NOTICE: Please Contact Healthy Hydration for Replacements.
Call Us: (509)519-2545 OR order online healthyhydration.com

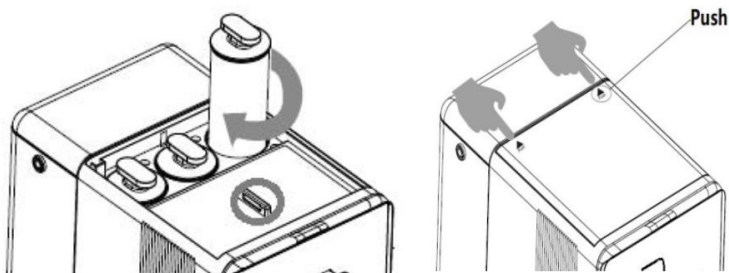
***The original cartridge of Hydra-Deluxe brand must be used to replace each cartridge to ensure the safety of clean drinking water. If the cartridge replacement process occurs abnormally, please contact our customer service center (phone number above) in time to deal with it.

Cartridge Function

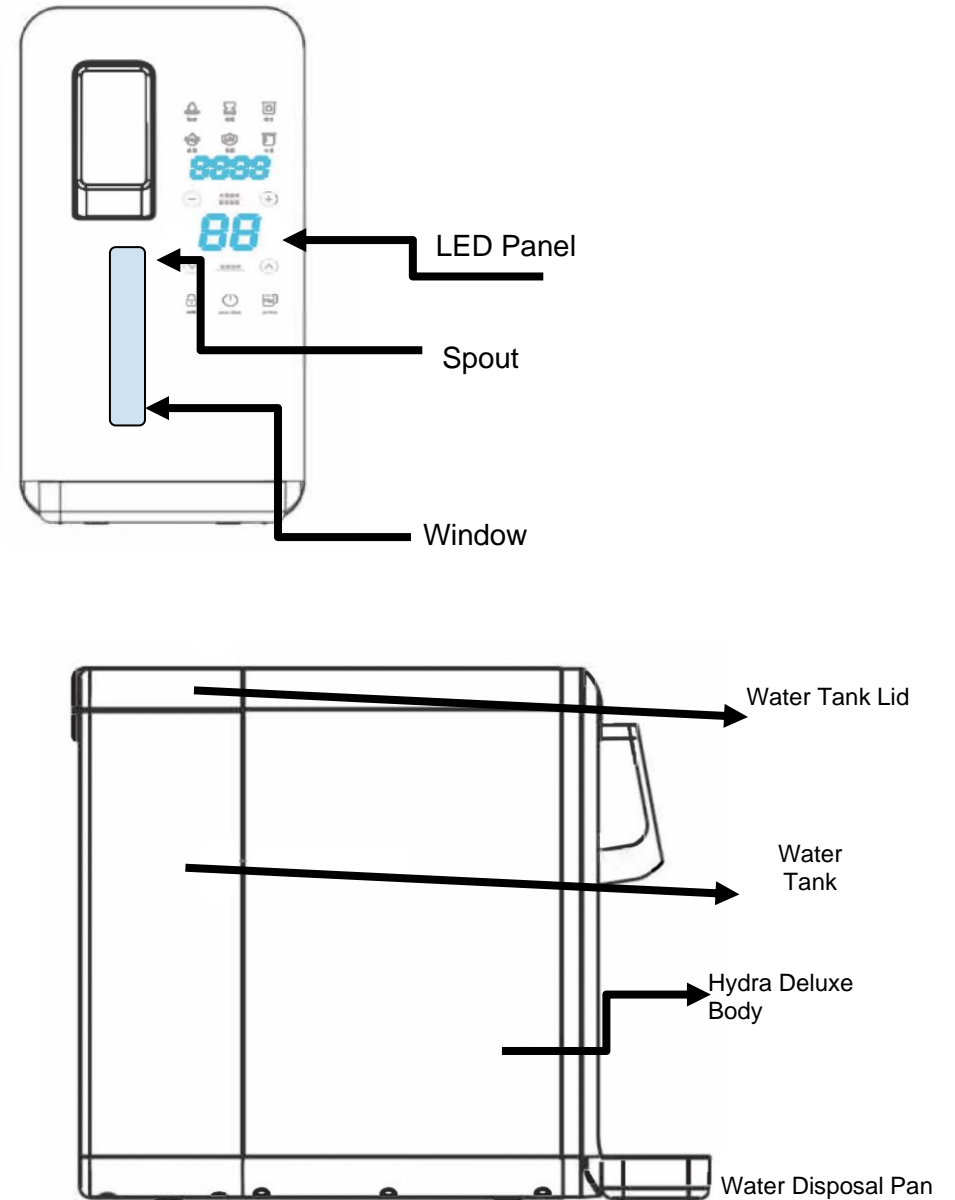
STEP 1: Open the top lid by gently pressing Push on the top cover. Remove the old cartridge by turning counterclockwise.

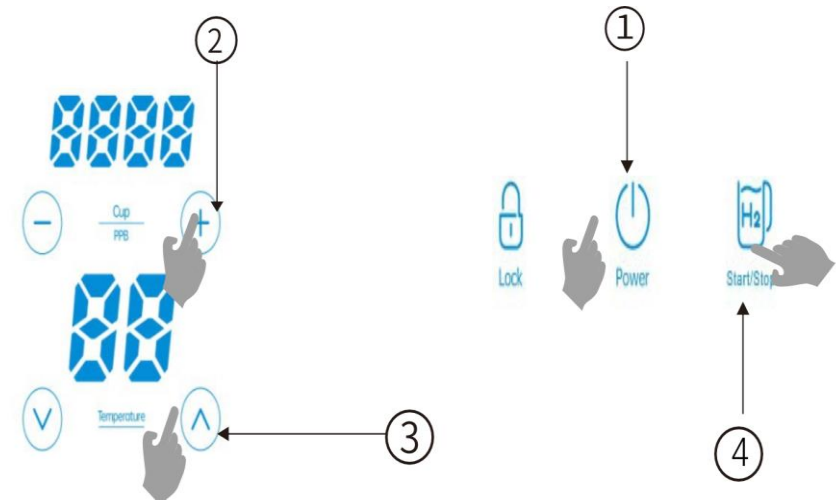


STEP 2: Take out the corresponding replacement cartridge, tighten it clockwise into place, and cover the top lid by gently




Product Diagram





NOTICE: Long press the “Start/Stop” button for 2 seconds can reset the unit to the default state of 55°C / 131°F and 150 mL water output volume.

Operations

- 1. LOCK KEY**  Touch the Lock button for 2 seconds to release the lock status.
- 2. WATER VOLUME. Adjust the water volume output:** Touch the “+” or “-” button once to enter the state of adjusting water volume, then touch the “+” or “-” button once again to increase or decrease the water volume. The default volume is 150mL

5 water volume gears are available: 150mL / 250mL / 350mL / 500mL / 800mL
- 3. TEMPERATURE SELECTION.** The Hydra Deluxe defaults to the last water extraction memory temperature. Touch the ↑ or ↓ button to enter the state of adjusting water temperature, and then touch ↑ or ↓ once again to increase or decrease the water temperature.

4 available temperature levels: **77°F / 131°F / 185°F / 210.20°F**
25°C / 55°C / 85°C / 99°C

***When selecting 85°C / 185°F or 99°C / 210.10°F HOT Water, you need to long press the lock 2 seconds to unlock before intaking the water.

- 4. WATER FLOW:** Touch the H2 Start/Stop button to take water or stop taking water

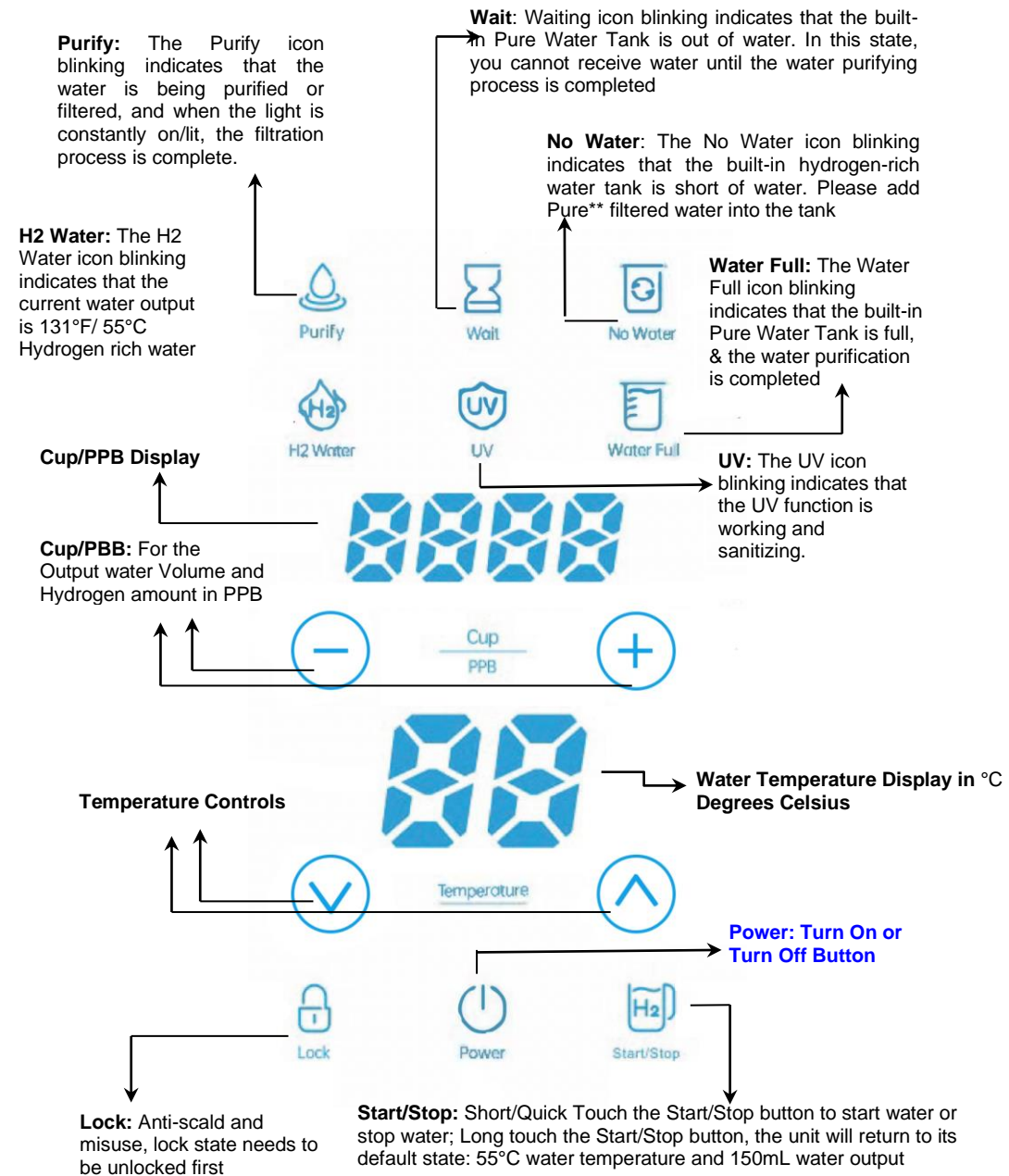


Attention:

- A) The Hydra-Deluxe Unit is equipped with a default water volume output protection, the default setting is set to 150mL after the completion of the last water intake.
 - B) When utilizing the hot water option please be very careful, DO NOT put your hand under the spout to avoid burning and scalding.

➤ To prevent dry burning; the first time the Hydra Deluxe is powered on to create hot water, after the unit is initially powered on, please take a period to process and drink room temperature water, and then transition to hot water.

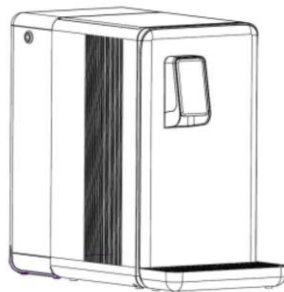
Product Function Introduction



Operation Instruction

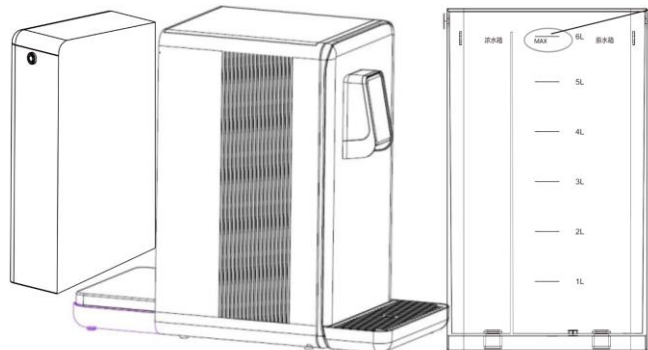
Step 1

Install the unit on a flat surface such as a table or a kitchen countertop.



Step 2

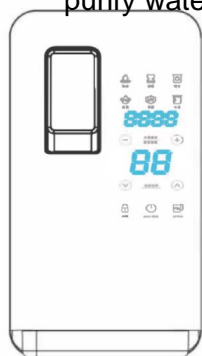
Remove the water tank and lid, fill the tank with water, DO NOT exceed or fill past max level. Once filled, install the tank onto the unit and cover the tank with the lid.



Please do not exceed the maximum water level

Step 3

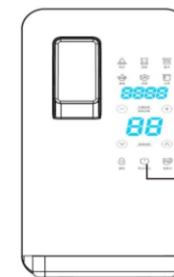
Plug in unit, then turn on the power by pushing the Power Button. The unit will automatically rinse and purify water when powered on.



During the initial filtration process, the Purify and Wait icon will be blinking at the same time, indicating that the water is being filtered. Please wait for cycle to complete. In this state, water cannot be taken, so please wait until the water filtration purification is completed.

Step 4

When using the Hydra Deluxe for the first time: Please remove the water tank then press and hold the power button for 3 seconds to drain the water tank. **TO DO THIS:** You will need a 2L Pitcher or Container. Please place water container (The container should no less than 2L) at the spout of Hydra-Deluxe to catch the water. The water in the pure water tank will be emptied in approx. 5~6minutes.

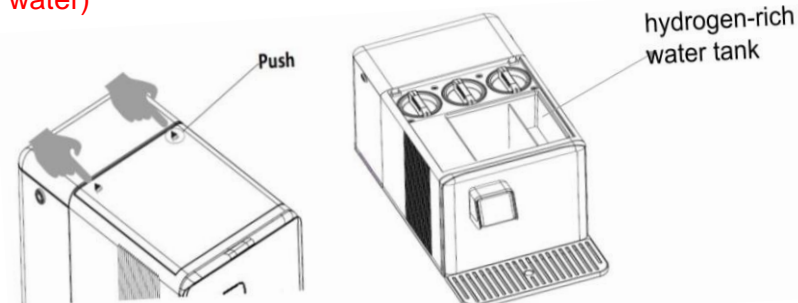


After the back end water tank is completely drained on the left side when facing unit, please pour out the remaining water in the right side tank and fill the tank with tap water. The unit will start to filter the water again, and then will be ready for normal use/consumption once it's completed its refill cycle.

Step 5

DISTILLED WATER TANK:

ADD Distilled WATER: Gently press Push on both sides of the top cover. To the right hand side you will see the Pure Water Tank, open the pure water tank cover and special water/ add bottled pure water then cover the pure water tank with its lid. **(IMPORTANT NOTICE: Hydrogen-rich water tank is prohibited to add tap water, mineral water, and filtered water)**



IMPORTANT! Flush your unit when needed:

If you are not using your Hydra-Deluxe unit for an extended period of time (about 2 weeks), Please repeat Step 4 & 5.