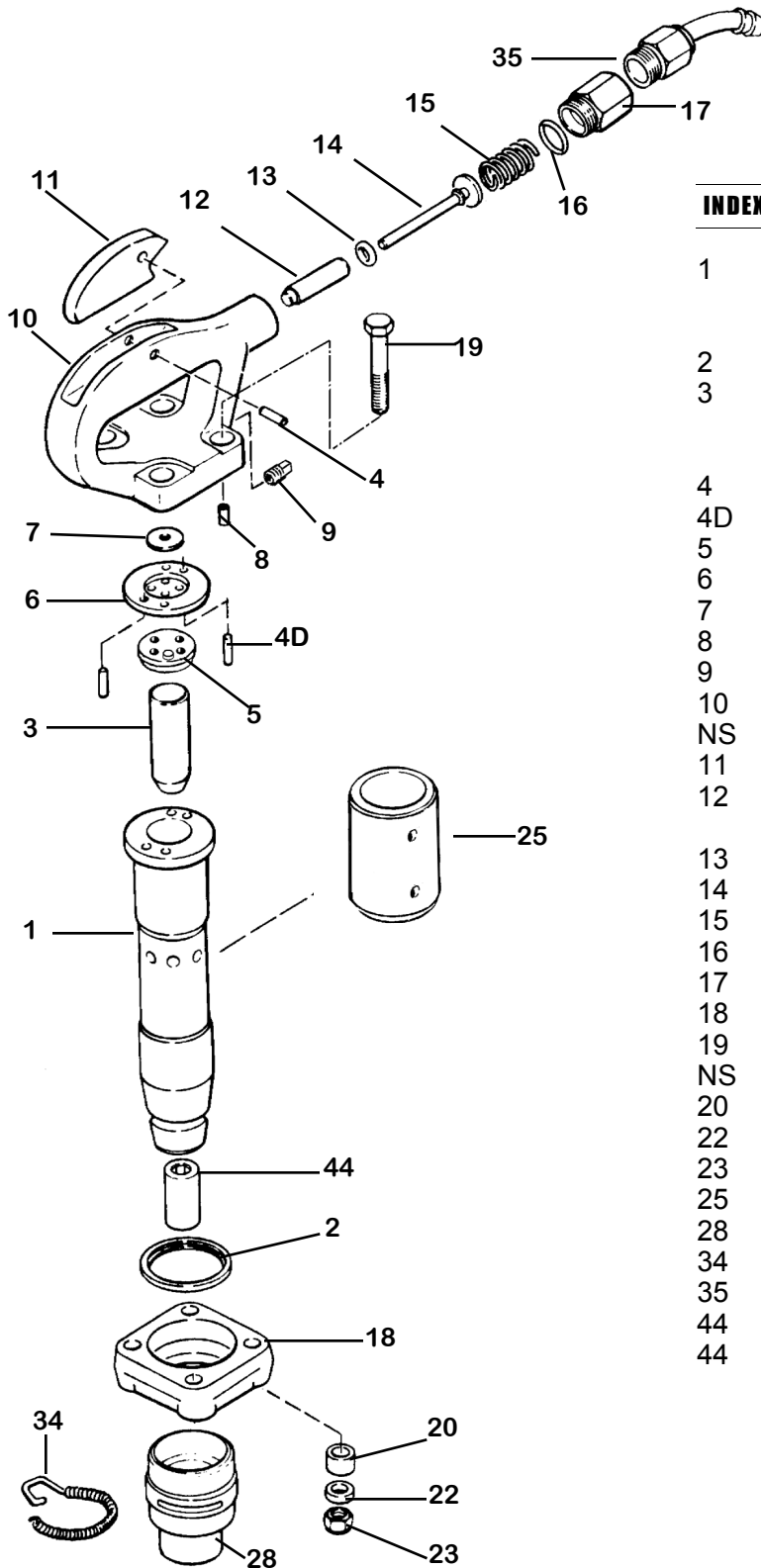


KATCO TOP TRIGGER CHIPPING HAMMER KTC-T2,T3,T4



INDEX	PART	DESCRIPTION
1	KT6701-2	BARREL #2
	KT6701-3	BARREL #3
	KT6701-4	BARREL #4
2	KT6702	FLANGE BUMPER RING
3	KT6703-2	PISTON #2
	KT6103-3	PISTON #3
	KT6703-4	PISTON #4
4	KT6176	PIN
4D	KT6704D	VALVE DOWEL PIN (2)
5	KT6705	BUMPER VALVE SEAT
6	KT6706	VALVE SPACER
7	KT6707	VALVE PLATE
8	KT6708	AIR PLUG
9	KT6709	AIR PLUG
10	KT6710	HANDLE BARE (INCL.6712)
NS	KT6710-C	HANDLE COMPLETE
11	KT6177	TRIGGER (LEVER)
12	KT6712	THROTTLE VALVE BUSHING
13	KT6713	THROTTLE VALVE O-RING
14	KT6714	THROTTLE VALVE
15	KT6715	THROTTLE VALVE SPRING
16	KT6716	AIR INLET BUSHING O-RING
17	KT6717	AIR INLET (7/8X24 SWIVEL)
18	KT6718	FLANGE
19	KT6719	HANDLE BOLT
NS	KT6719B	SPRING WASHER
20	KT6720	BUMPER WASHER
22	KT6722	HANDLE BOLT SPACER
23	KT6723	HANDLE BOLT NUT
25	KT6725B	EXHAUST DEFLECTOR
28	KT6128	RETAINER OVAL COLLAR
34	KT6134	RETAINER SPRING
35	KT6135	AIR INLET SWIVEL
44	KT6144R	BUSHING ROUND SHANK
44	KT6144H	BUSHING HEX SHANK

Specifications KTC-4T

Net Weight	8.5 kg	19 lbs
Length	432 mm	17 in
Bore	29 mm	1.125 in
Stroke	102 mm	4 in
Blows per minute	1800	1800
Chuck Sizes	14.8 mm Hex	.580 in Hex
	17.5 mm Rnd	.680 in Rnd
Air Inlet (NPT)	10 mm	3/8 in
Air Consumption*	.94 m ³ /m	33.23 cfm

Specifications KTC-3T

Net Weight	7.5 kg	17 lbs
Length	387 mm	15.25 in
Bore	29 mm	1.125 in
Stroke	102 mm	3 in
Blows per minute	2200	2200
Chuck Sizes	14.8 mm Hex	.580 in Hex
		17.5
	mm Rnd	.680 in Rnd
Air Inlet (NPT)	10 mm	3/8 in
Air Consumption*	.89 m ³ /m	31.5 cfm

Specifications KTC-2T

Net Weight	6.5kg	15 lbs
Length	356 mm	14 in
Bore	29 mm	1.125 in
Stroke	51 mm	2 in
Blows per minute	2300	2300
Chuck Sizes	14.8 mm Hex	.580 in Hex
	17.5 mm Rnd	.680 in Rnd
Air Inlet (NPT)	10 mm	3/8 in
Air Consumption*	.84 m ³ /m	29.75 cfm

*estimated



**WHEN
ORDERING
TOOLS
SPECIFY
CHUCK SIZE**

WARNING:

ALWAYS DISCONNECT THE AIR SUPPLY BEFORE CHANGING CHISELS OR DISMANTLING THE TOOL FOR SERVICE OR REPAIR. FOR MAXIMUM SAFETY WE ADVISE THE INSTALLATION OF A SHUT-OFF VALVE AT THE END OF THE AIR LINE.