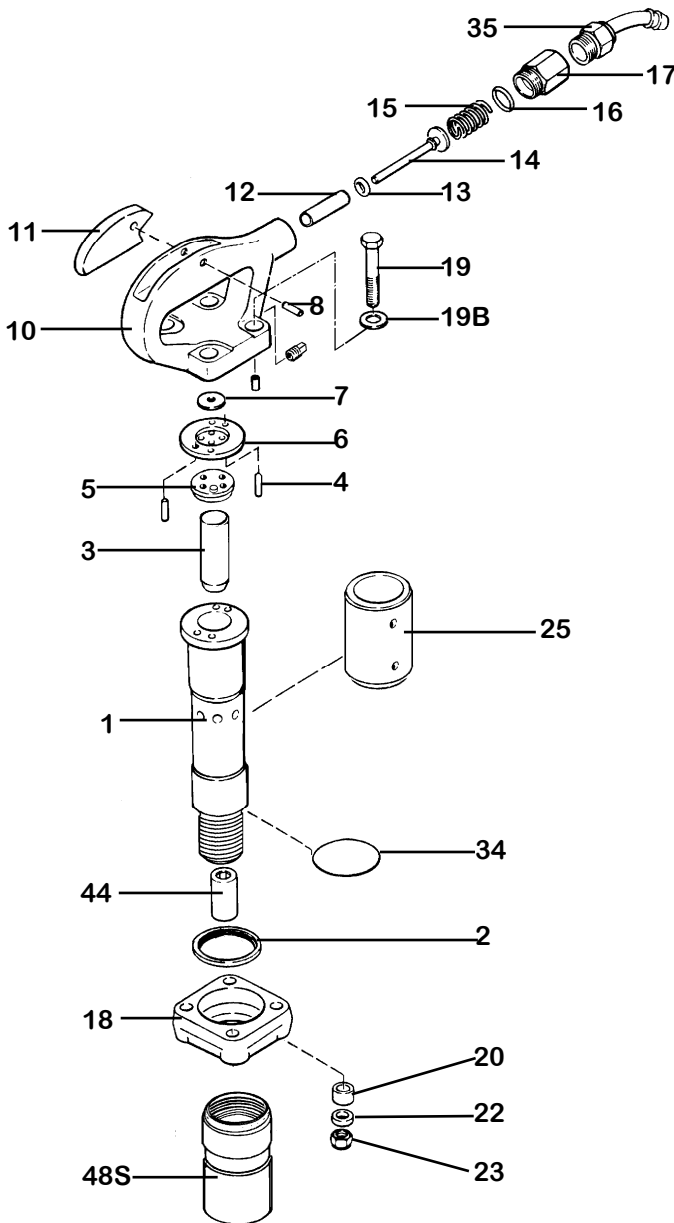


# CHIPPING HAMMER KTC-T3S,T4S



INDEX	PART	DESCRIPTION
1	KT6701-3S	BARREL 3"
	KT6701-4S	BARREL 4"
2	KT6702	LOCK RING BUMPER
3	KT6103-3	PISTON 3"
	KT6703-4	PISTON 4"
4	KT6704D	VALVE DOWEL (2)
5	KT6705	BUMPER VALVE SEAT
6	KT6706	VALVE SPACER
7	KT6707	VALVE PLATE
8	KT6176	FULCRUM PIN
10	KT6710	HANDLE BARE
NS	KT6710C	HANDLE COMPLETE
11	KT6711	THROTTLE LEVER
12	KT6712	THROTTLE VALVE BUSHING
13	KT6713	THROTTLE VALVE O-RING
14	KT6714	THROTTLE VALVE
15	KT6715	THROTTLE VALVE SPRING
16	KT6716	AIR INLET O-RING
17	KT6717	AIR INLET
18	KT6718	FLANGE
19	KT6719	HANDLE BOLT ( 4 )
19B	KT6719B	SPRING WASHER ( 4 )
20	KT6720	BUMPER WASHER ( 4 )
22	KT6722	HANDLE BOLT SPACER ( 4 )
23	KT6723	HANDLE BOLT NUT ( 4 )
25	KT6725B	EXHAUST DEFLECTOR
34	KT6279	RETAINER O-RING
35	KT6135	SWIVEL (7/8 - 24)
44	KT6144R	BUSHING, ROUND (.680")
44	KT6144H	BUSHING, HEX (.580")
48S	KT6148S	SCREW-ON BALL RETAINER

# SCREW RETAINER CHIPPING HAMMER KTC-T3S,T4S

## Specifications KTC-T4S

<b>Net Weight</b>	8.5 kg	19 lbs
<b>Length</b>	432 mm	17 in
<b>Bore</b>	29 mm	1.125 in
<b>Stroke</b>	102 mm	4 in
<b>Blows per minute</b>	1800	1800
<b>Chuck Sizes</b>	14.8 mm Hex	.580 in Hex
	17.5 mm Rnd	.680 in Rnd
<b>Air Inlet (NPT)</b>	10 mm	3/8 in
<b>Air Consumption*</b>	.94 m <sup>3</sup> /m	33.23 cfm

## Specifications KTC-T3S

<b>Net Weight</b>	6.4 kg	14 lbs
<b>Length</b>	387 mm	15.25 in
<b>Bore</b>	29 mm	1.125 in
<b>Stroke</b>	102 mm	3 in
<b>Blows per minute</b>	2200	2200
<b>Chuck Sizes</b>	14.8 mm Hex	.580 in Hex
	mm Rnd	17.5 in Rnd
		.680 in RNF
<b>Air Inlet (NPT)</b>	10 mm .89	3/8 in
<b>Air Consumption*</b>	m <sup>3</sup> /m	31.5 cfm



**WHEN  
ORDERING  
TOOLS  
SPECIFY  
CHUCK SIZE**

\*estimated

### WARNING:

ALWAYS DISCONNECT THE AIR SUPPLY BEFORE CHANGING CHISELS OR DISMANTLING THE TOOL FOR SERVICE OR REPAIR. FOR MAXIMUM SAFETY WE ADVISE THE INSTALLATION OF A SHUT-OFF VALVE AT THE END OF THE AIR LINE.