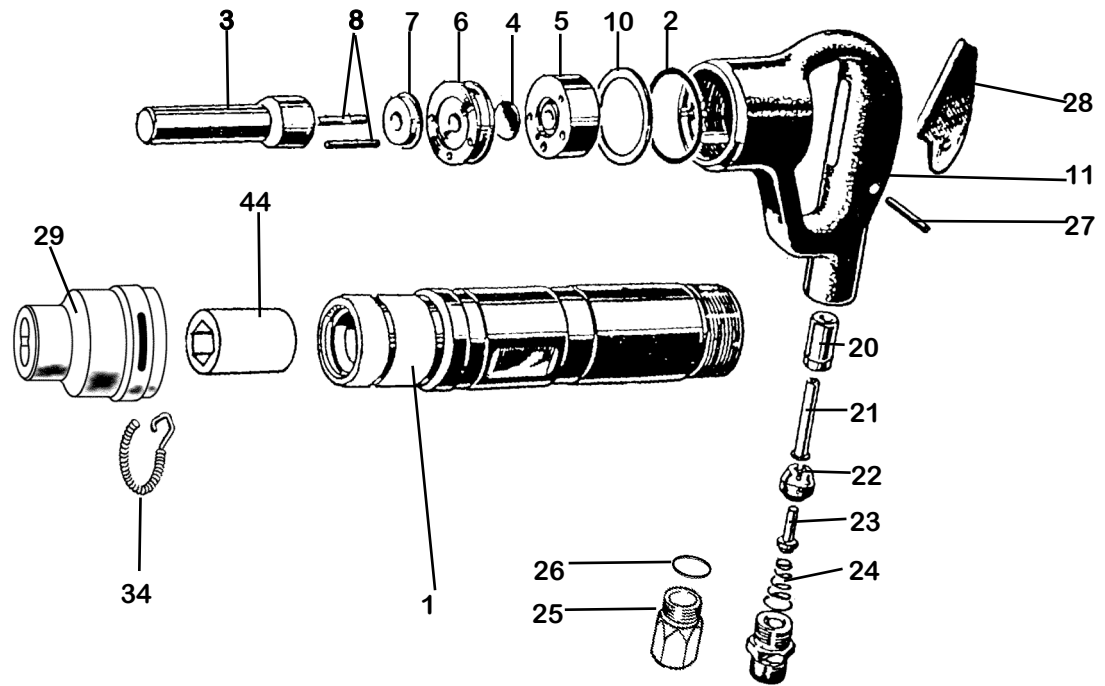


PARTS LIST LIGHTWEIGHT CHIPPER 11 lb. class KTC-L



INDEX	PART	DESCRIPTION	INDEX	PART	DESCRIPTION
1	6268	CYLINDER BARE U.S.A. TYPE	25	6175	INLET BUSHING 7/8" X 24
2	6162	CYLINDER O-RING	26	6175B	INLET BUSHING O-RING
3	6273	PISTON	27	6176	LEVER/TRIGGER PIN
4	6274	VALVE DISC	28	6177	LEVER/TRIGGER
5	6275	VALVE PLATE UPPER	29	6128A	OVAL COLLAR SPRING RETAINER
6	6276	VALVE PLATE LOWER	NS	6148A	QUICK CHANGE BALL RETAINER
7	6277	PLASTIC VALVE BUMPER	34	6134	RETAINER SPRING
8	6278	DOWEL PIN (2)	NS	6293E	CHISEL BUSHING HEX .580"
10	6280	PACKING (2)	NS	6295E	CHISEL BUSHING ROUND .680"
11	6281	HANDLE BARE incl. SI6170			
NS	6282-C	HANDLE COMPLETE			
20	6170	PUSH ROD BUSHING			
21	6171	PUSH ROD			
22	6172	THROTTLE VALVE BUSHING			
23	6173	THROTTLE VALVE			
24	6174	THROTTLE VALVE SPRING			



**WHEN ORDERING TOOLS
SPECIFY CHUCK SIZE**

WHEN ORDERING REPLACEMENT PARTS,
FURNISH THE MODEL NUMBER(S) AND
SERIAL NUMBER(S) OF YOUR TOOLS.

Specifications

Net Weight	5 kg	11 lbs
Length	410 mm	16.5 in
Bore	28 mm	1.125 in
Stroke	60 mm	2.375 in
Blows per minute	2550	2550
Chuck Sizes	19 x 50 mm	3/4 x 2 in
	14.8 Hex	.580 Hex
	17.5 Rnd	.680 Rnd
Air Inlet (NPT)	10 mm	3/8 in male
	22.2 mm	7/8 in female
Air Consumption*	.45 m ³ /m	15.8 cfm

*estimated

**FOR OPTIMUM PERFORMANCE, DO NOT OPERATE
TOOL ABOVE 90 PSI (6 BAR) WORKING PRESSURE.**

WARNING:

**ALWAYS DISCONNECT THE AIR SUPPLY BEFORE
CHANGING CHISELS OR DISMANTLING THE TOOL
FOR SERVICE OR REPAIR. FOR MAXIMUM SAFETY
WE ADVISE THE INSTALLATION OF A SHUT-OFF
VALVE AT THE END OF THE AIR LINE.**

**DO NOT EXCEED 100 PSI (7BAR) WORKING
PRESSURE.**