

# KATCO D Handle chipping hammer KTC-D3 & D4

---



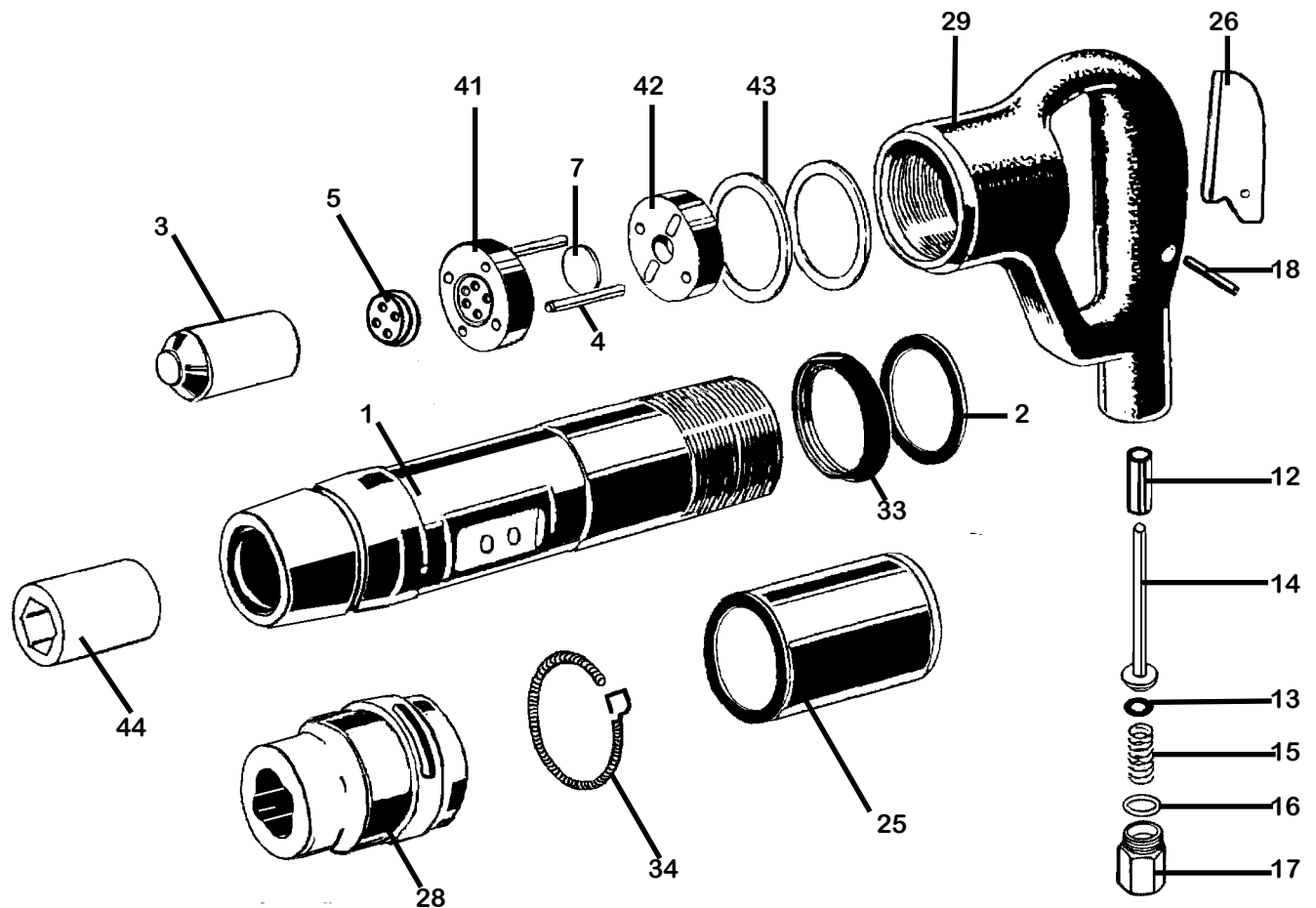
## Specifications –KTC-D4

<b>Net Weight</b>	8.5 kg	19 lbs
<b>Length</b>	432 mm	17 in
<b>Bore</b>	29 mm	1.125 in
<b>Stroke</b>	102 mm	4 in
<b>Blows per minute</b>	1200	1200
<b>Chuck Sizes</b>	14.8 mm Hex	.580 in Hex
	17.5 mm Rnd	.680 in Rnd
<b>Air Inlet (NPT)</b>	10 mm	3/8 in
<b>Air Consumption*</b>	1.1 m <sup>3</sup> /m	36 cfm



## Specifications –KTC-D3

<b>Net Weight</b>	6.5 kg	15 lbs
<b>Length</b>	395 mm	15.5 in
<b>Bore</b>	29 mm	1.125 in
<b>Stroke</b>	75 mm	3 in
<b>Blows per minute</b>	2200	2200
<b>Chuck Sizes</b>	14.8 mm Hex	.580 in Hex
	17.5 mm Rnd	.680 in Rnd
<b>Air Inlet (NPT)</b>	10 mm	3/8 in
<b>Air Consumption*</b>	1.4 m <sup>3</sup> /m	32cfm



INDEX	PART	DESCRIPTION	INDEX	PART	DESCRIPTION
1	KT6100-3	#3 BARREL	25	KT6725B	EXHAUST DEFLECTOR
	KT6100-4	#4 BARREL	26	KT6177	TRIGGER
2	KT6702	LOCK RING BUMPER	28	KT6128	OVAL COLLAR RETAINER
3	KT6103-3	#3 PISTON	29	KT6559D	HANDLE BARE
	KT6703-4	#4 PISTON	NS	KT6559DC	HANDLE COMPLETE
4	KT6704D	VALVE DOWEL (2)	31	KT6133	HANDLE LOCK RING
5	KT6705	BUMPER VALVE SEAT	34	KT6134	RETAINER SPRING
7	KT6707	VALVE PLATE S.STEEL	NS	KT6135	SWIVEL(7/8 - 24, 1/2" HOSE BARB)
12	KT6712	THROTTLE VALVE BUSHING	41	KT6141	FRONT VALVE SPACER HOUSING
13	KT6713	THROTTLE VALVE O-RING	42	KT6142	UPPER VALVE PLATE
14	KT6714	THROTTLE VALVE	43	KT6143	INTER-LOCK RING ( 2PC. SET )
15	KT6715	THROTTLE VALVE SPRING	44	KT6144R	BUSHING FOR ROUND SHANK (.680")
16	KT6716	AIR INLET O-RING	44	KT6144H	BUSHING FOR HEX SHANK (.580")
17	KT6717D	AIR INLET BUSHING			
18	KT6176	LEVER FULCRUM PIN			

**SERVICE NOTE:** When re-assembling this tool following any cleaning or service procedure, the two piece INTER LOCK RINGS (PN: 6143) must be replaced inside handle or handle will not lock in the tightened position and may vibrate loose when operating the tool (a small amount of thread locking compound may also be applied to barrel threads before the handle LOCK RING PN: 6131 is tightened in place.)