

CHIPPING HAMMERS 12-15 lb. class KTC-3P,4P



Specifications KTC-P4

Net Weight	7 kg	15 lbs
Length	432 mm	17 in
Bore	29 mm	1.125 in
Stroke	102 mm	4 in
Blows per minute	1800	1800
Chuck Sizes	14.8 mm Hex	.580 in Hex
	17.5 mm Rnd	.680 in Rnd
Air Inlet (NPT)	10 mm	3/8 in
Air Consumption*	.94 m ³ /m	33.23 cfm

Specifications KTC-P3

Net Weight	6.4 kg	14 lbs
Length	387 mm	15.25 in
Bore	29 mm	1.125 in
Stroke	102 mm	3 in
Blows per minute	2200	2200
Chuck Sizes	14.8 mm Hex	.580 in Hex
	17.5 mm Rnd	.680 in Rnd
Air Inlet (NPT)	10 mm	3/8 in

*estimated

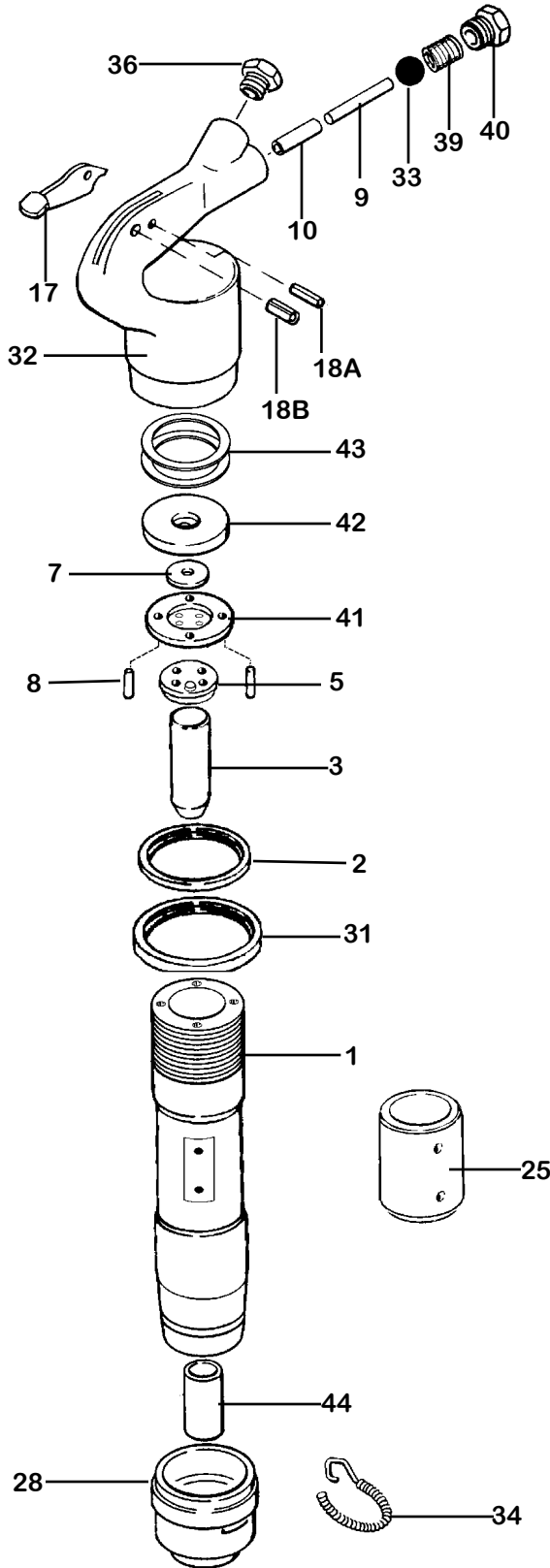
**WHEN
ORDERING
TOOLS
SPECIFY
CHUCK SIZE**



WARNING:

ALWAYS DISCONNECT THE AIR SUPPLY BEFORE CHANGING CHISELS OR DISMANTLING THE TOOL FOR SERVICE OR REPAIR. FOR MAXIMUM SAFETY WE ADVISE THE INSTALLATION OF A SHUT-OFF VALVE AT THE END OF THE AIR LINE.

PARTS LIST



INDEX	PART	DESCRIPTION
-------	------	-------------

1	KT6100-3	BARREL #3
	KT6100-4	BARREL #4
2	KT6702	LOCK RING BUMPER
3	KT6103-3	PISTON #3
	KT6704-4	PISTON #4
5	KT6705	BUMPER VALVE SEAT
7	KT6707	VALVE DISC
8	KT6108L	VALVE DOWEL (2)
9	KT6109	PUSH PIN
10	KT6110	PUSH PIN BUSHING
17	KT6117	THROTTLE LEVER
18A	KT6118A	LEVER STOP PIN
18B	KT6118B	LEVER FULCRUM PIN
25	KT6725	PU EXHAUST DEFLECTOR
28	KT6128	RETAINER FOR OVAL COLLAR
31	KT6131	HANDLE LOCK RING
32	KT6132	HANDLE BARE (INCLUDES 6110)
NS	KT6132C	HANDLE COMPLETE
33	KT6133	THROTTLE VALVE BALL
34	KT6134	RETAINER SPRING
35	KT6135	AIR INLET SWIVEL 7/8" X 24 (REMOVE KT6136)
36	KT6136	HANDLE BUSHING
39	K61T39	THROTTLE VALVE SPRING
40	KT6768A	THROTTLE VALVE PLUG
41	KT6141	FRONT VALVE SPACER /HOUSING
42	KT6142	UPPER VALVE PLATE
43	KT6143	INTER LOCK RING
44	KT6144R	BUSHING FOR ROUND SHANK
44	KT6144H	BUSHING FOR HEX SHANK

SERVICE NOTE: When re-assembling this tool following any cleaning or service procedure, the two inter lock rings (6143) must be replaced inside the handle or the handle will not lock down on the cylinder. A small amount of thread locking agent may also be applied to part (6131) before tightening this into place.

WHEN ORDERING REPLACEMENT PARTS, FURNISH THE MODEL NUMBER(S) AND SERIAL NUMBER (S) OF YOUR TOOLS.