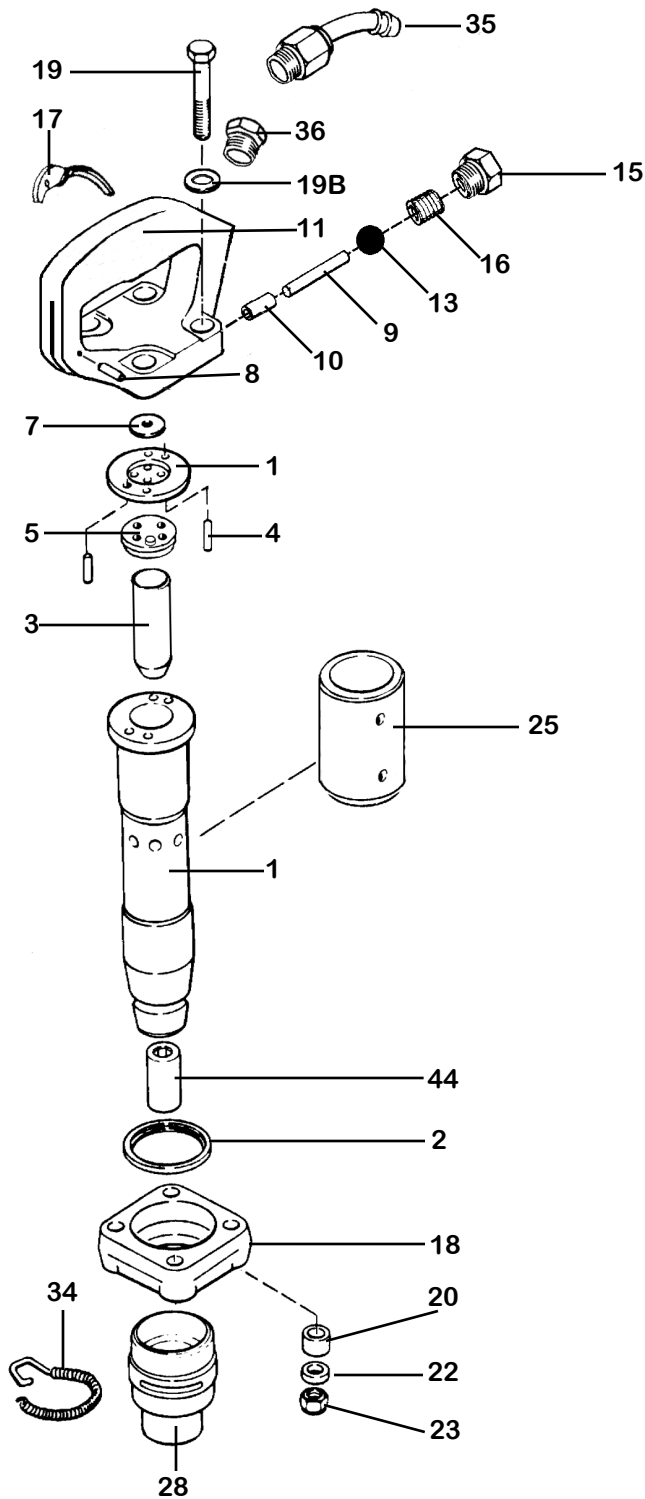


KATCO INSIDE TRIGGER CHIPPING HAMMER KTC-2,3,4



INDEX	PART	DESCRIPTION
1	KT6701-2	#2 CYLINDER
	KT6701-3	#3 CYLINDER
	KT6701-4	#4 CYLINDER
2	KT6702	FLANGE RING
3	KT6703-2	#2 PISTON
	KT6103-3	#3 PISTON
	KT6703-4	#4 PISTON
4	KT6704D	VALVE DOWEL (2)
5	KT6705	BUMPER VALVE SEAT
6	KT6706	VALVE SPACER
7	KT6707	VALVE PLATE
8	KT6764A	FULCRUM PIN
9	KT6769A	PUSH PIN
10	KT6770	PUSH PIN BUSHING
11	KT6711	HANDLE BARE
NS	KT6711C	HANDLE COMPLETE
13	KT6133	THROTTLE VALVE BALL
15	KT6768A	THROTTLE VALVE PLUG
16	KT6139	THROTTLE SPRING
17	KT6763	TRIGGER
18	KT6718	FLANGE
19	KT6719	HANDLE BOLT (4)
19B	KT6719B	SPRING WASHER (4)
20	KT6720	BUMPER WASHER (4)
22	KT6722	BOLT SPACER(4)
23	KT6723	HANDLE BOLT NUT (4)
25	KT6725B	EXHAUST DEFLECTOR
28	KT6128	OVAL COLLAR RETAINER
34	KT6134	RETAINER SPRING
35	KT6135	SWIVEL(7/8 - 24
36	KT6136	HANDLE BUSHING
44	KT6144R	BUSHING ROUND (.680")
44	KT6144H	BUSHING HEX (.580")

Specifications KTC-4

Net Weight	7 kg	15 lbs
Length	432 mm	17 in
Bore	29 mm	1.125 in
Stroke	102 mm	4 in
Blows per minute	1800	1800
Chuck Sizes	14.8 mm Hex	.580 in Hex
	17.5 mm Rnd	.680 in Rnd
Air Inlet (NPT)	10 mm	3/8 in
Air Consumption*	.94 m ³ /m	33.23 cfm

Specifications KTC - 3

Net Weight	6.4 kg	14 lbs
Length	387 mm	15.25 in
Bore	29 mm	1.125 in
Stroke	75 mm	3 in
Blows per minute	2200	2200
Chuck Sizes	14.8 mm Hex	.580 in Hex
	17.5 mm Rnd	.680 in Rnd
Air Inlet (NPT)	10 mm	3/8 in
Air Consumption*	.89 m ³ /m	31.5 cfm

Specifications KTC - 2

Net Weight	6 kg	13 lbs
Length	356 mm	14 in
Bore	29 mm	1.125 in
Stroke	51 mm	2 in
Blows per minute	2300	2300
Chuck Sizes	14.8 mm Hex	.580 in Hex
	17.5 mm Rnd	.680 in Rnd
Air Inlet (NPT)	10 mm	3/8 in
Air Consumption*	.84 m ³ /m	29.75 cfm

WHEN ORDERING TOOLS SPECIFY CHUCK SIZE



FOR OPTIMUM PERFORMANCE, DO NOT OPERATE TOOL ABOVE 90 PSI (6 BAR) WORKING PRESSURE.

*estimated

WARNING:
ALWAYS DISCONNECT THE AIR SUPPLY BEFORE CHANGING CHISELS OR DISMANTLING THE TOOL FOR SERVICE OR REPAIR. FOR MAXIMUM SAFETY WE ADVISE THE INSTALLATION OF A SHUT-OFF VALVE AT THE END OF THE AIR LINE.

DO NOT EXCEED 100 PSI (7BAR) WORKING PRESSURE.

WHEN ORDERING REPLACEMENT PARTS, FURNISH THE MODEL NUMBER(S) AND SERIAL NUMBER(S) OF YOUR TOOLS.