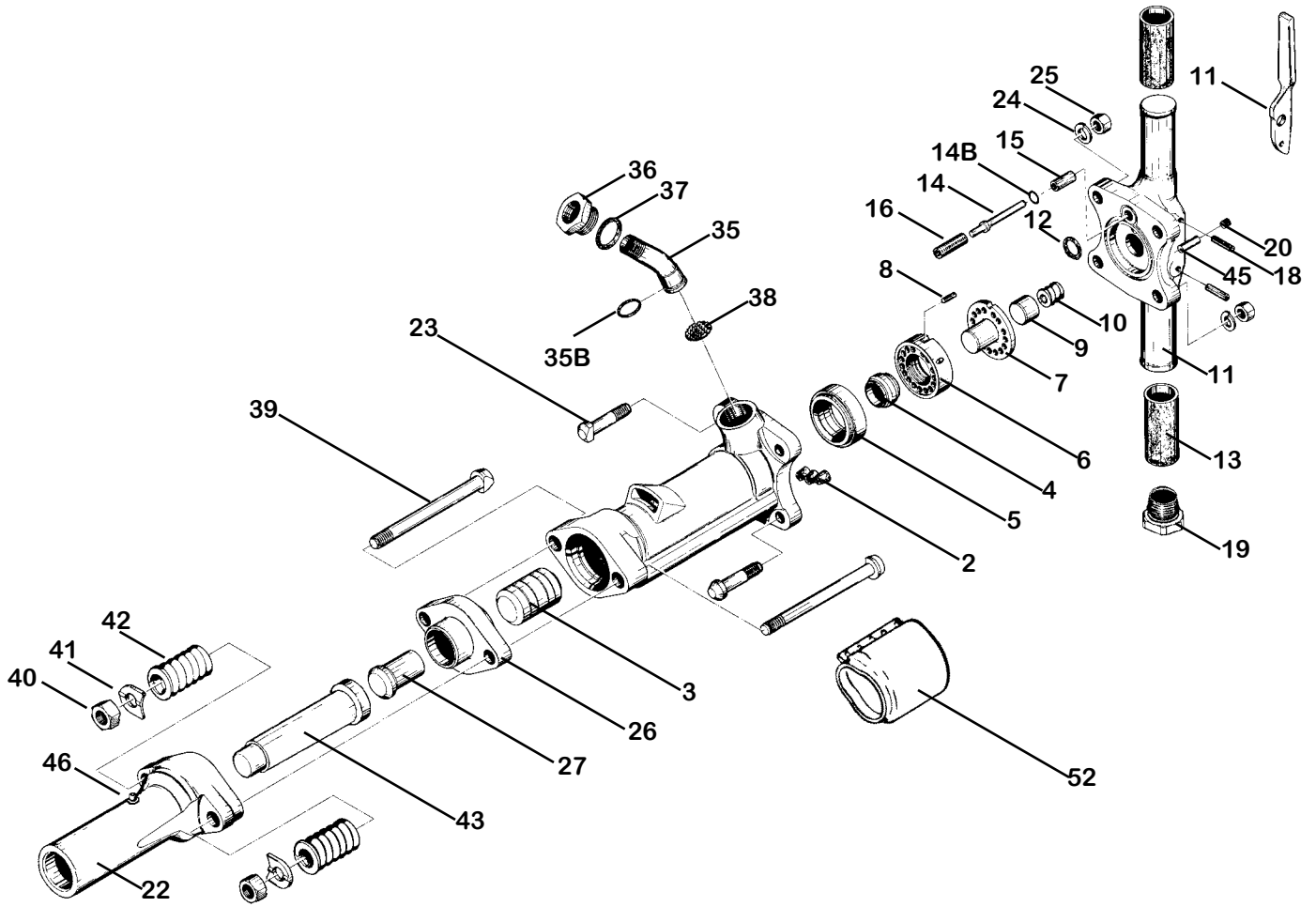


PARTS LIST SPIKE DRIVER 60 lb. class KT-SD60



INDEX	PART	DESCRIPTION	INDEX	PART	DESCRIPTION
1	KT6601	CYLINDER	24	KT6624	BACKHEAD BOLT LOCKWASHER (4)
2	KT6602	CYLINDER PLUGS (5)	25	KT6625	BACKHEAD BOLT NUT (4)
3	KT6603	PISTON	26	KT6626	TAPPET SEAT
4	KT6604	AUTOMATIC VALVE	27	KT6627	TAPPET
5	KT6605	VALVE CHEST	35	KT6035	AIR INLET SWIVEL
6	KT6606	VALVE SEAT	35B	KT6766A	AIR INLET SWIVEL O-RING
7	KT6607	VALVE GUIDE	36	KT6036	AIR INLET SWIVEL NUT
8	KT6608	VALVE DOWEL PIN	37	KT6037	SWIVEL NUT O-RING
9	KT6609	BACKHEAD PLUNGER	38	KT6038	AIR INLET SCREEN
10	KT6610	BACKHEAD PLUNGER SPRING	39	KT6639	FRONTHEAD BOLT(2)
11	KT6611	BACKHEAD BARE (incl. #6615)	40	KT6640	FRONTHEAD BOLT NUT(2)
NS	KT6611C	BACKHEAD ASSBLY. COMPLETE	41	KT6641	FRONTHEAD BOLT LOCKWASHER(2)
NS	KT6612	BACKHEAD PORT O-RING	42	KT6642	FRONTHEAD BOLT SPRING(2)
13	KT6613	RUBBER GRIP(2)	43	KT6643	SPIKE DRIVER DOLLY
14	KT6614	THROTTLE VALVE	45	KT6645	OIL CONTROL FELT
14B	KT6614B	THROTTLE VALVE O-RING	NS	KT6652	MUFFLER ASSBLY. (OPTIONAL)
15	KT6615	THROTTLE VALVE SLEEVE			
16	KT6616	THROTTLE VALVE SPRING			
17	KT6617	THROTTLE LEVER			
18	KT6618	THROTTLE LEVER PIN (2)			
19	KT6619	OIL RESERVOIR PLUG			
20	KT6620	OIL CONTROL FELT PLUG			
22	KT6622	FRONTHEAD - SPIKE DRIVER			
23	KT6623	BACKHEAD BOLT (4)			



Specifications

Net Weight	29 kg	64 lbs
Length	622 mm	24.5 in
Bore	57 mm	2.25 in
Stroke	104 mm	4.0937 in
Blows per minute	1400	1400
Air Inlet (NPT)	19 mm	3/4 in
Air Consumption*	1.7 m ³ /m	59 cfm

*estimated

WARNING:

ALWAYS DISCONNECT THE AIR SUPPLY BEFORE CHANGING CHISELS OR DISMANTLING THE TOOL FOR SERVICE OR REPAIR. FOR MAXIMUM SAFETY WE ADVISE THE INSTALLATION OF A SHUT-OFF VALVE AT THE END OF THE AIR LINE.