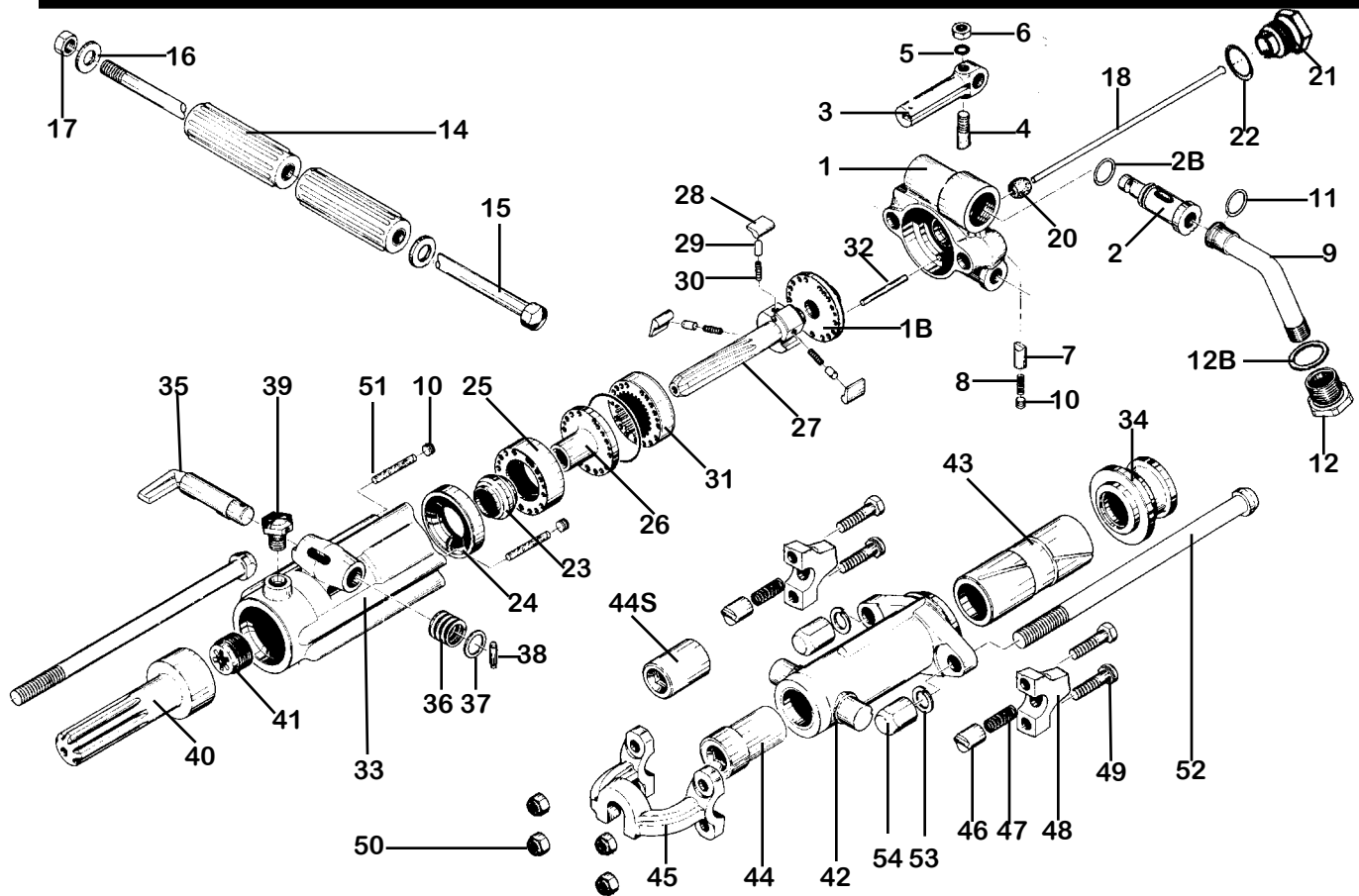
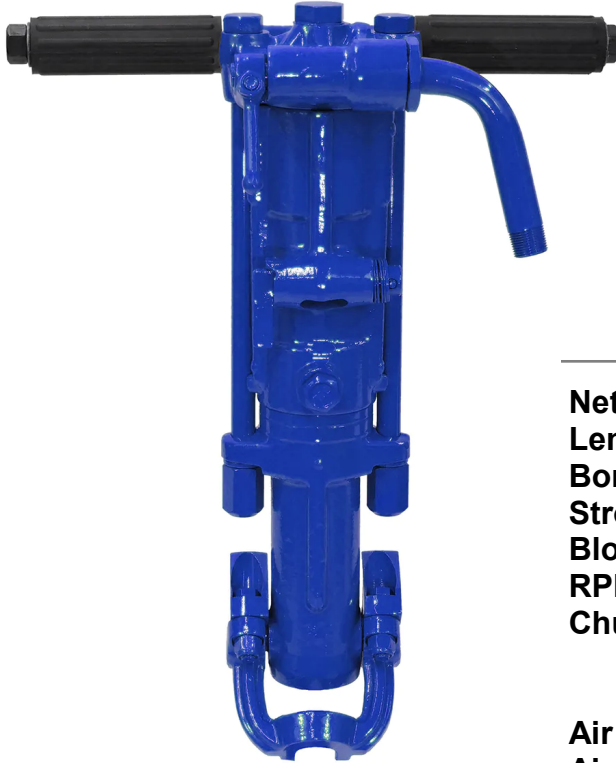


PARTS LIST ROCK DRILL 65 lb. class KT-RD75



INDEX	PART	DESCRIPTION	INDEX	PART	DESCRIPTION
1	KT7501	BACKHEAD W/BUSHING	29	KT7529	PAWL PLUNGER (3)
1B	KT7501B	BACKHEAD PLATE	30	KT7530	PAWL SPRING (3)
2	KT7502	THROTTLE VALVE	31	KT7531	RATCHET RING
2B	KT7502B	THROTTLE VALVE O-RING	32	KT7532	VALVE DOWEL
3	KT7503	THROTTLE VALVE HANDLE	33	KT7533B	CYLINDER
4	KT6913	THROTTLE VALVE HANDLE BOLT	34	KT7534	FRONT WASHER BUSHING
5	KT6915	THROTTLE HANDLE WASHER	35	KT7535	EXHAUST VALVE
6	KT7506	THROTTLE VALVE HANDLE BOLT NUT	36	KT7536	EXHAUST VALVE SPRING
7	KT7507	DETENT PLUNGER	37	KT7537	EXHAUST VALVE WASHER
8	KT7508	DETENT SPRING	38	KT7538	EXHAUST VALVE PIN
9	KT7509	AIR INLET SWIVEL	39	KT6619	OIL FILLER PLUG
10	KT6620	PLUG (3)	40	KT7540	PISTON
11	KT6766A	SWIVEL O-RING	41	KT7541	RIFLE NUT
12	KT6036	SWIVEL NUT	42	KT7542	FRONTHEAD
12B	KT6037	SWIVEL NUT O-RING	43	KT7543	CHUCK DRIVER
14	KT7614C	HANDLE GRIP COMPLETE (2)	44	KT7544	CHUCK BUSHING 1" x 4 1/4" HEX
15	KT7515	HANDLE BOLT	44S	KT7544S	CHUCK BUSHING 7/8" x 3 1/4" HEX
16	KT6927	HANDLE BOLT WASHER (2)	45	KT7545	STEEL RETAINER 1" x 4 1/4"
17	KT6926	HANDLE BOLT NUT	NS	KT7545S	STEEL RETAINER 7/8" x 3 1/4"
18	KT7518	BLOW TUBE	46	KT7546	STEEL RETAINER PLUNGER (2)
NS	KT7518W	WATER TUBE	47	KT6634	RETAINER SPRING (2)
20	KT7520	BLOW TUBE RUBBER SEAL	48	KT7548H	STEEL RETAINER CAP (2)
21	KT7521	BLOW TUBE GLAND	49	KT7549	STEEL RETAINER BOLT(4)
NS	KT7521W	WATER TUBE GLAND	50	KT7550	STEEL RETAINER BOLT NUT(4)
22	KT7522	BLOW TUBE GASKET	51	KT7551	OIL FELT(2)
23	KT7523	AUTOMATIC VALVE	52	KT7552	SIDE ROD(2)
24	KT7524	FRONT VALVE CHEST	53	KT6631	SIDE ROD LOCK WASHER (2)
25	KT7525	REAR VALVE CHEST	54	KT7554	SIDE ROD BOLT NUT(2)
26	KT7526	VALVE GUIDE	NS	KT7555	CHUCK BUSHING 7/8" x 4 1/4"
27	KT7527	RIFLE BAR	NS	KT7556	MUFFLER
28	KT7528	PAWL (NON-REVERSIBLE) (3)			



WHEN ORDERING REPLACEMENT PARTS, FURNISH THE MODEL NUMBER(S) AND SERIAL NUMBER(S) OF YOUR TOOLS.

Specifications

Net Weight	27.5 kg	61 lbs
Length	603 mm	23.75 in
Bore	67 mm	2.625 in
Stroke	82 mm	3.22 in
Blows per minute	2250	2250
RPM	200	200
Chuck Sizes	25 x 108 mm	1 x 4 1/4 in
	22 x 108 mm	7/8 x 4 1/4 in
	22 x 83 mm	7/8 x 3 1/4 in
Air Inlet (NPT)	19 mm	3/4 in
Air Consumption*	2.77 m ³ /m	98 cfm

*estimated

**WHEN ORDERING TOOLS
SPECIFY CHUCK SIZE**

THOR® TYPE

WARNING:

ALWAYS DISCONNECT THE AIR SUPPLY BEFORE CHANGING CHISELS OR DISMANTLING THE TOOL FOR SERVICE OR REPAIR. FOR MAXIMUM SAFETY WE ADVISE THE INSTALLATION OF A SHUT-OFF VALVE AT THE END OF THE AIR LINE.