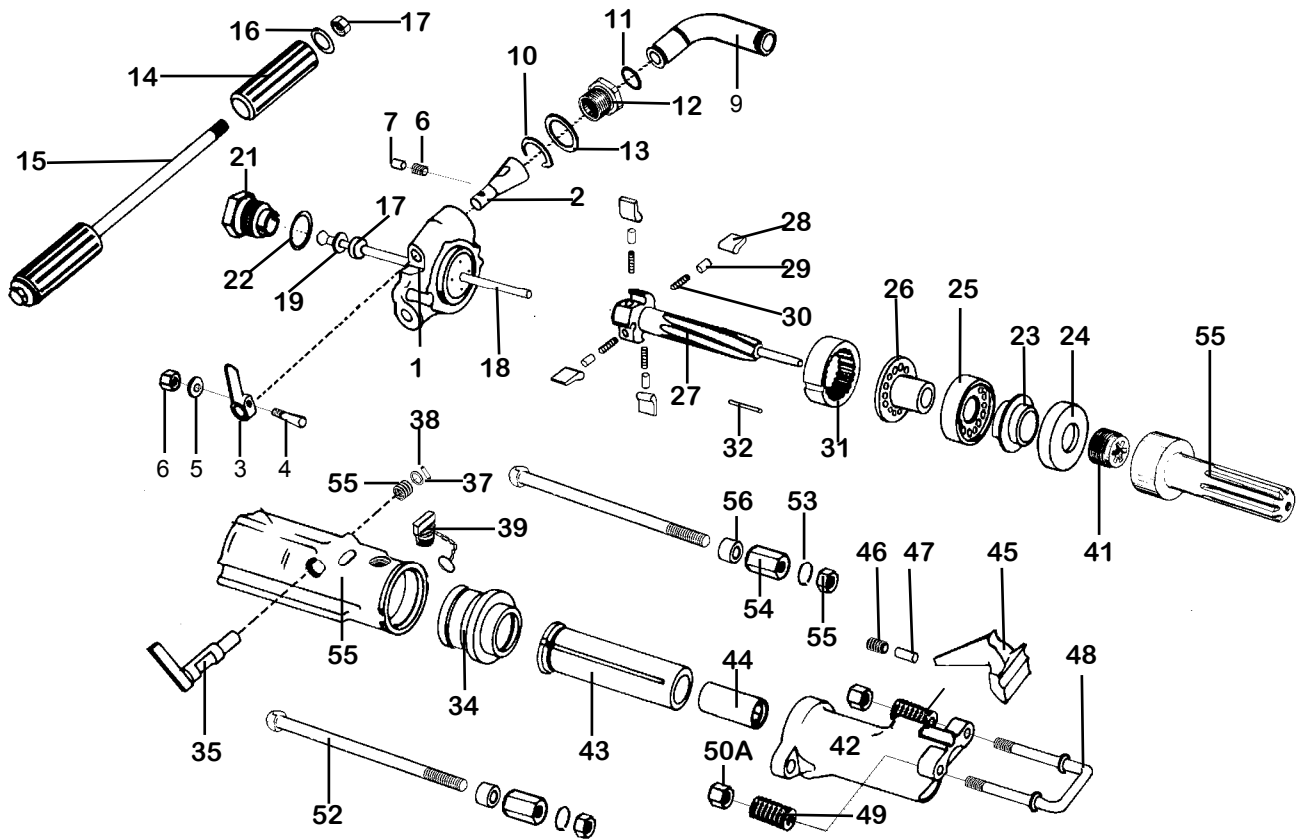
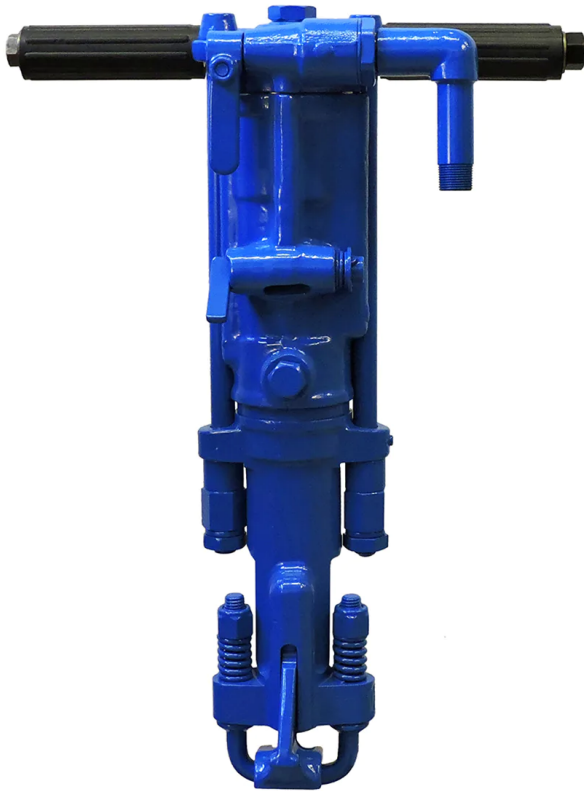


PARTS LIST ROCK DRILL 60 lb. class KT-RD60



INDEX	PART	DESCRIPTION	INDEX	PART	DESCRIPTION
1	KT7601	BACKHEAD W/BUSHING	31	KT7631	RATCHET RING
NS	KT7601B	BACKHEAD BUSHING	32	KT7632	RATCHET DOWEL PIN
2	KT7602	THROTTLE VALVE	33	KT7633	CYLINDER
3	KT7603	THROTTLE VALVE HANDLE	34	KT7634	CYLINDER BUSHING
4	KT6913	THROTTLE VALVE HANDLE BOLT	35	KT7635	EXHAUST VALVE
5	KT6915	THROTTLE VALVE HANDLE WASHER	36	KT7636	EXHAUST VALVE SPRING
6	KT7506	THROTTLE HANDLE BOLT NUT	37	KT7637	EXHAUST VALVE WASHER
7	KT7607	DETENT PLUNGER	38	KT7638	EXHAUST VALVE PIN
8	KT7608	DETENT SPRING	39	KT6619	OIL FILLER PLUG
9	KT7609	AIR INLET SWIVEL	40	KT7640	PISTON
10	KT7610	SWIVEL RETAINER	41	KT7641	RIFLE NUT
11	KT7611	SWIVEL O-RING	42	KT7642	FRONTHEAD 1 x 4 1/4
12	KT7612	SWIVEL NUT		KT7642S	FRONTHEAD 7/8 x 3 1/4
13	KT7613	SWIVEL WASHER	43	KT7643	CHUCK DRIVER 1 x 4 1/4
14	KT7614	HANDLE GRIP COMPLETE (2)		KT7643S	CHUCK DRIVER 7/8 x 3 1/4
15	KT7515	HANDLE BOLT	44	KT7644	CHUCK BUSHING 1 x 4 1/4 HEX
16	KT6927	HANDLE BOLT WASHER (2)		KT7659	CHUCK BUSHING 7/8 x 4 1/4 HEX
17	KT6926	HANDLE BOLT NUT		KT7644S	CHUCK BUSHING 7/8 x 3 1/4 HEX
18	KT7618	BLOW TUBE	45	KT7645	STEEL RETAINER 1 x 4 1/4
19	KT7619	BLOW TUBE WASHER		KT7645S	STEEL RETAINER 7/8 x 3 1/4
20	KT7620	BLOW TUBE RUBBER SEAL	46	KT7646	RETAINER PIVOT
21	KT7621	BLOW TUBE GLAND	47	KT7647	RETAINER SPRING
22	KT7622	BLOW TUBE GASKET	48	KT7648	RETAINER YOKE
23	KT7623	AUTOMATIC VALVE	49	KT7649	YOKE SPRING (2)
24	KT7624	FRONT VALVE CHEST	50A	KT7650A	YOKE NUT (NYLON INSERT) (2)
25	KT7625	REAR VALVE CHEST	52	KT7652	SIDE ROD
26	KT7626	VALVE GUIDE	53	KT6631	SIDE ROD LOCK WASHER (2)
27	KT7627	RIFLE BAR	54	KT7654	SIDE ROD NUT - LONG (2)
28	KT7628	PAWL (NON-REVERSIBLE) (4)	55	KT7655	SIDE ROD NUT - SHORT (2)
29	KT7629	PAWL PLUNGER (4)	56	KT7656	SIDE ROD SPACER (2)
30	KT7630	PAWL SPRING (COIL) (4)	NS	KT7658	MUFFLER



WHEN ORDERING REPLACEMENT PARTS, FURNISH THE MODEL NUMBER(S) AND SERIAL NUMBER (S) OF YOUR TOOLS.

Specifications

Net Weight	26.8 kg	59 lbs
Length	610 mm	24 in
Bore	67 mm	2.625 in
Stroke	65 mm	2.5625 in
Blows per minute	1800	1800
RPM	200	200
Chuck Sizes	25 x 108 mm	1 x 4 1/4 in
	22 x 108 mm	7/8 x 4 1/4 in
	22 x 83 mm	7/8 x 3 1/4 in
Air Inlet (NPT)	19 mm	3/4 in
Air Consumption*	2.77 m ³ /m	98 cfm

*estimated

**WHEN ORDERING TOOLS
SPECIFY CHUCK SIZE**

GARDNER-DENVER® TYPE

WARNING:

ALWAYS DISCONNECT THE AIR SUPPLY BEFORE CHANGING CHISELS OR DISMANTLING THE TOOL FOR SERVICE OR REPAIR. FOR MAXIMUM SAFETY WE ADVISE THE INSTALLATION OF A SHUT-OFF VALVE AT THE END OF THE AIR LINE.