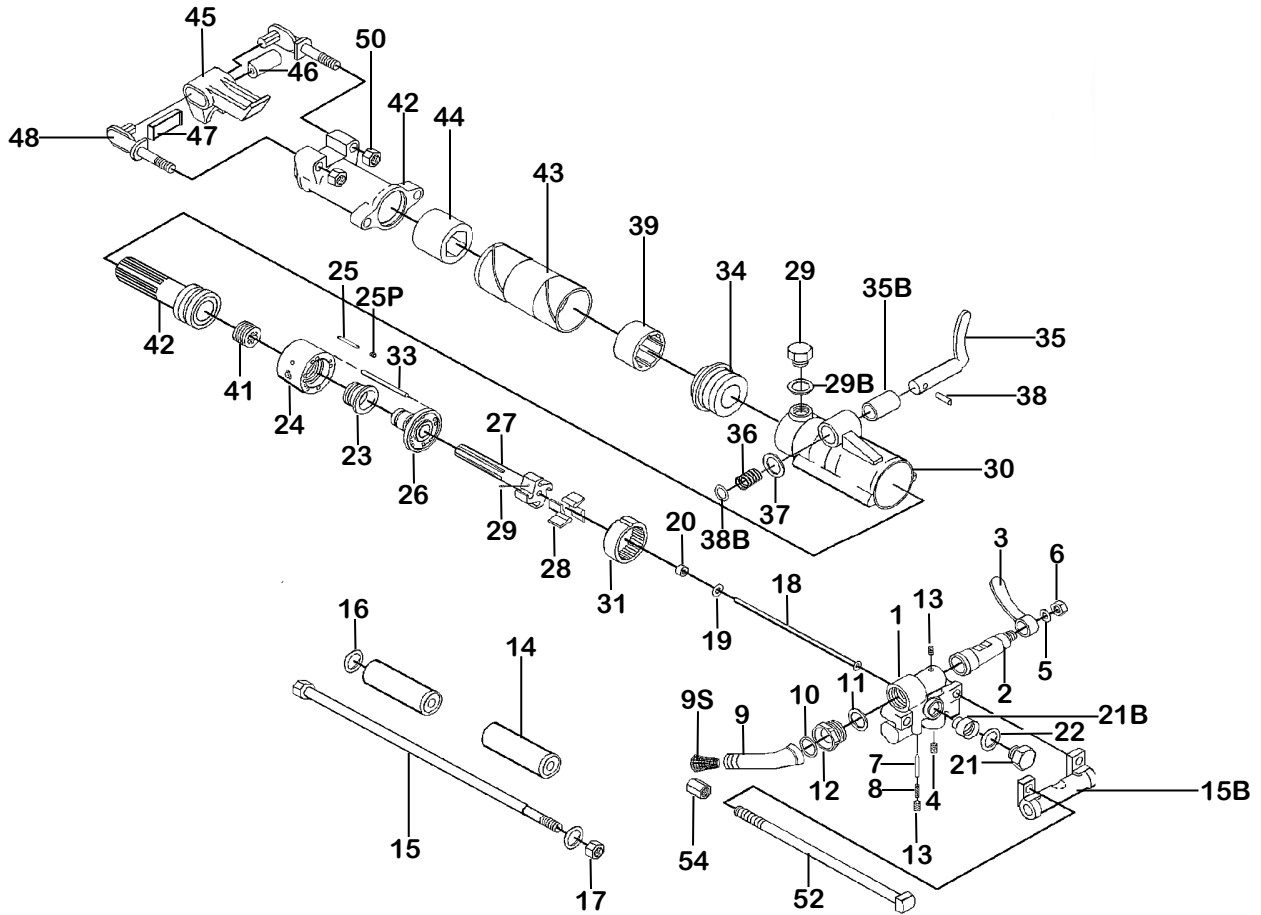
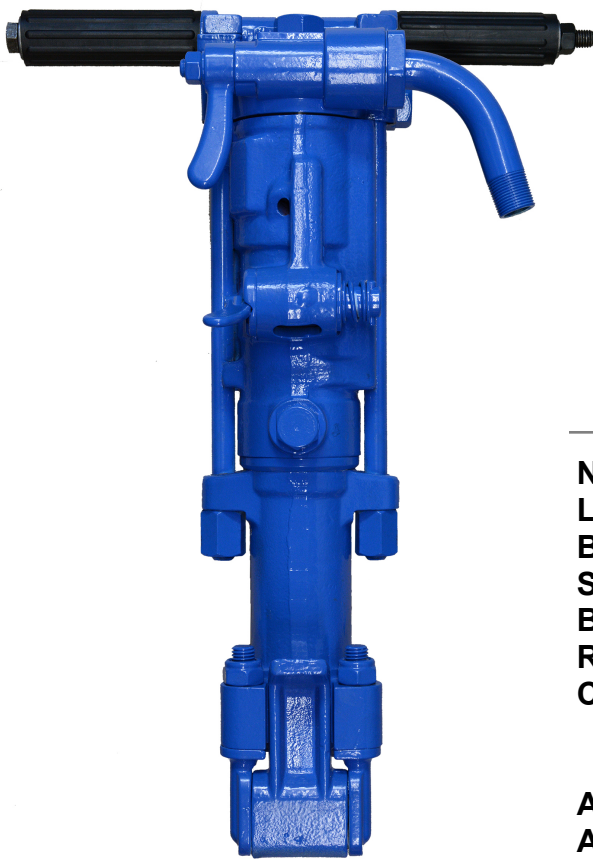


# PARTS LIST ROCK DRILL 50 lb. class KT-RD50



INDEX	PART	DESCRIPTION	INDEX	PART	DESCRIPTION
1	KT7401	BACKHEAD	25S	KT7425S	REGULATION STEM PLUG
2	KT7402	THROTTLE VALVE	26	KT7426	VALVE GUIDE
3	KT7403	THROTTLE VALVE HANDLE	27	KT7427	RIFLE BAR
4	KT7404	PORT PLUG	28	KT7428	PAWL (NON-REVERSIBLE) (4)
5	KT7405	THROTTLE HANDLE WASHER	29	KT7429	OIL PLUG
6	KT7406	THROTTLE VALVE HANDLE BOLT NUT	29B	KT7429B	OIL PLUG GASKET
7	KT7407	DETENT PLUNGER	30	KT7430	PAWL SPRING (4)
8	KT7408	DETENT SPRING	31	KT7431	RATCHET RING
9	KT7409	AIR INLET SWIVEL	32	KT7432	VALVE DOWEL
9S	KT7409S	STRAINER	33	KT7433	CYLINDER
10	KT7410	AIR INLET SWIVEL O-RING	34	KT7434	FRONT WASHER BUSHING
11	KT7411	SWIVEL NUT O-RING	35	KT7435	EXHAUST VALVE
12	KT7412	SWIVEL NUT	35B	KT7435B	EXHAUST VALVE BUSHING
13	KT7413	PLUG	36	KT7436	EXHAUST VALVE SPRING
14	KT7414	HANDLE GRIP COMPLETE (2)	37	KT7437	EXHAUST VALVE WASHER
15	KT7415	HANDLE BOLT	38	KT7438	EXHAUST VALVE PIN
16	KT7416	HANDLE BOLT WASHER (2)	38B	KT7438B	EXHAUST VALVE SPRING WASHER
17	KT7417	HANDLE BOLT NUT	39	KT7439	BRONZE CHUCK NUT
18	KT7418	BLOW TUBE	40	KT7440	PISTON
NS	KT7418W	WATER TUBE	41	KT7441	RIFLE NUT
19	KT7419	BLOW TUBE WASHER	42	KT7442	FRONTHEAD
20	KT7420	BLOW TUBE RUBBER SEAL	43	KT7443	CHUCK DRIVER
21	KT7421	BLOW TUBE GLAND	44	KT7444	CHUCK BUSHING 1" x 4 1/4" HEX
NS	KT7521W	WATER TUBE GLAND	45	KT7445	STEEL RETAINER 4 1/4"
22	KT7422	BLOW TUBE GASKET	46	KT7446	RETAINER BUFFER
23	KT7423	AUTOMATIC VALVE	47	KT7447	RETAINER LATCH SHOE
24	KT7424	VALVE CASE	48	KT7448	STEEL RETAINER TRUNION (2)
25	KT7425	OIL REGULATION STEM	50	KT7450	STEEL RETAINER BOLT LOCKNUT(2)



WHEN ORDERING REPLACEMENT PARTS, FURNISH THE MODEL NUMBER(S) AND SERIAL NUMBER(S) OF YOUR TOOLS.

### Specifications

<b>Net Weight</b>	24kg	53 lbs
<b>Length</b>	584 mm	23 in
<b>Bore</b>	67 mm	2.64 in
<b>Stroke</b>	51 mm	2 in
<b>Blows per minute</b>	1980	1980
<b>RPM</b>	180	180
<b>Chuck Sizes</b>	25 x 108 mm	1 x 4 1/4 in
	22 x 108 mm	7/8 x 4 1/4 in
<b>Air Inlet (NPT)</b>	19 mm	3/4 in NPT
<b>Air Consumption*</b>	48 l/m	102 cfm

\*estimated

**WHEN ORDERING TOOLS  
SPECIFY CHUCK SIZE**

**CP ® TYPE**

### **WARNING:**

**ALWAYS DISCONNECT THE AIR SUPPLY BEFORE CHANGING CHISELS OR DISMANTLING THE TOOL FOR SERVICE OR REPAIR. FOR MAXIMUM SAFETY WE ADVISE THE INSTALLATION OF A SHUT-OFF VALVE AT THE END OF THE AIR LINE.**