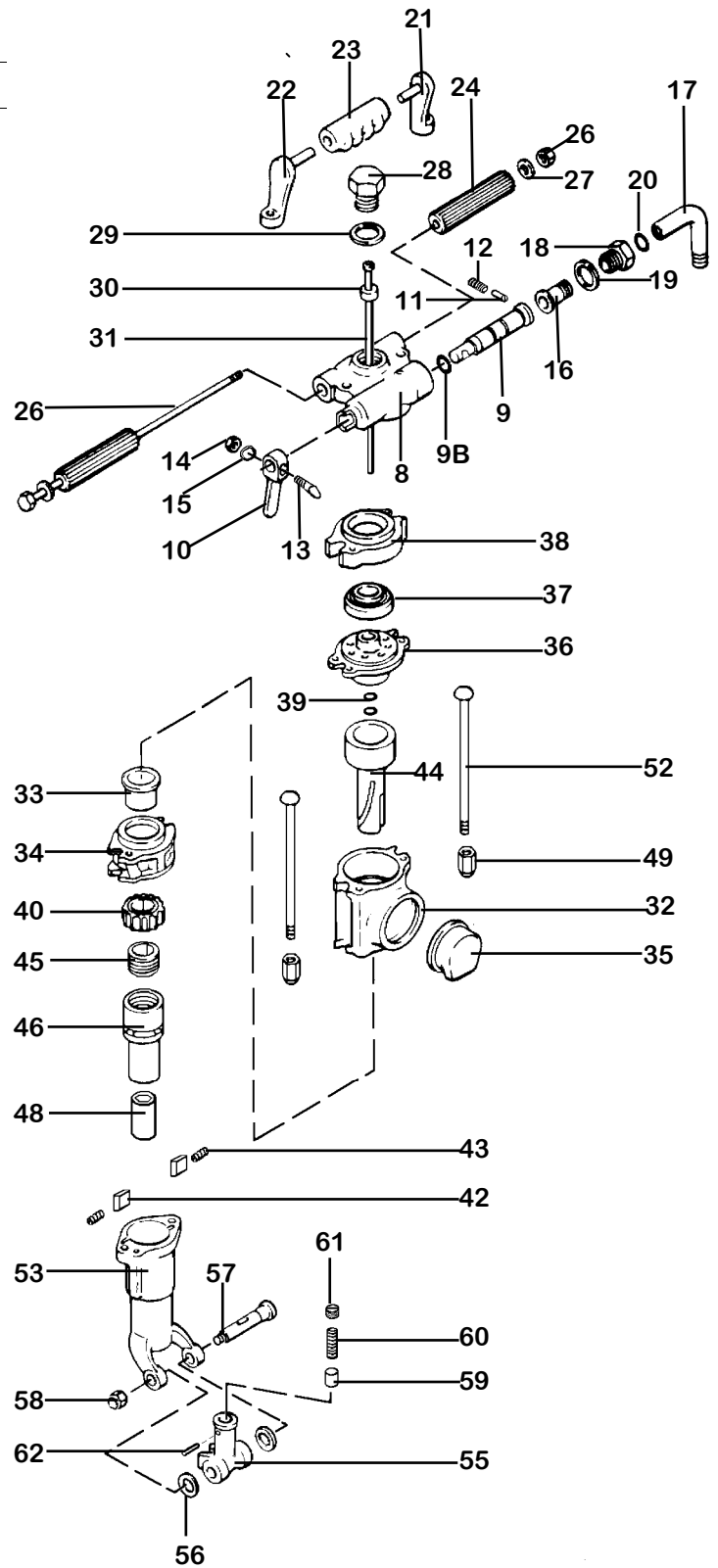


PARTS LIST ROCK DRILL 30 lb class KT-RD30

NOTE: This drill must be operated with a line oiler.

INDEX	PART	DESCRIPTION
8	KT6908	BACKHEAD - DRY
9B	KT6909B	THROTTLE VALVE O-RING
9	KT6909	THROTTLE VALVE
10	KT6910	THROTTLE VALVE HANDLE
11	KT6911	THROTTLE VALVE PLUNGER
12	KT6912	THROTTLE VALVE SPRING
13	KT6913	THROTTLE VALVE BOLT
14	KT6914	THROTTLE BOLT NUT
15	KT6915	THROTTLE BOLT LOCKWASHER
16	KT6916	SWIVEL CONNECTION
17	KT6917	AIR CONNECTION ELBOW
18	KT6918	AIR CONNECTION NUT
19	KT6919	AIR CONNECTION NUT WASHER
20	KT6920	AIR CONNECTION O-RING
21	KT6921	LEFT GRIP SUPPORT
22	KT6922	RIGHT GRIP SUPPORT
23	KT6923	CENTER GRIP
24	KT6924	HANDLE GRIP (2)
25	KT6925	HANDLE BOLT
26	KT6926	HANDLE BOLT NUT
27	KT6927	HANDLE BOLT WASHER (2)
28	KT6928	BLOW TUBE GLAND
29	KT6929	TUBE GLAND GASKET
30	KT6930	TUBE GASKET
31	KT6931	BLOW TUBE
32	KT6932	CYLINDER
33	KT6933	FRONT WASHER
34	KT6934	FRONT WASHER BUSHING
35	KT6935	EXHAUST DEFLECTOR
36	KT6936	VALVE CHEST COVER
37	KT6937	AUTOMATIC VALVE
38	KT6938	VALVE CHEST
39	KT6939	VALVE CHEST COVER O-RING (2)
40	KT6940	RATCHET RING RIFLE NUT
42	KT6942	ROTATION PAWL (2)
43	KT6943	PAWL SPRING (2)
44	KT6944	PISTON
45	KT6945	SLEEVE NUT
46	KT6946	ROTATION SLEEVE - 3 1/4" SHANK
	KT6946A	ROTATION SLEEVE - 4 1/4" SHANK
48	KT6948	SLEEVE BUSHING 7/8" HEX x 3 1/4"
	KT6948A	SLEEVE BUSHING 7/8" HEX x 4 1/4"
49	KT6949	SIDE ROD NUT (2)
52	KT6952	SIDE ROD (2)
53	KT6953	FRONTHEAD - 3 1/4" SHANK
	KT6953A	FRONTHEAD - 4 1/4" SHANK
55	KT6955	STEEL RETAINER
56	KT6956	STEEL RETAINER PACKING(2)
57	KT6957	STEEL RETAINER BOLT
58	KT6958	STEEL RETAINER NUT
59	KT6959	STEEL RETAINER PLUNGER
60	KT6960	STEEL RETAINER SPRING
61	KT6961	STEEL RETAINER SCREW
62	KT6962	STEEL RETAINER PIN



WET CONSTRUCTION

- NS KT6928W WATER TUBE GLAND
- NS KT6931W WATER TUBE



WHEN ORDERING TOOLS SPECIFY CHUCK SIZE

WHEN ORDERING REPLACEMENT PARTS,
FURNISH THE MODEL NUMBER(S) AND
SERIAL NUMBER(S) OF YOUR TOOLS.

Specifications

Net Weight	13 kg	29 lbs
Length	495 mm	19.5 in
Bore	62 mm	2.4375 in
Stroke	37 mm	1.4375 in
Blows per minute	2700	2700
RPM	240	240
Chuck Sizes	22 x 108 mm	7/8 x 4 1/4 in
	22 x 83 mm	7/8 x 3 1/4 in
Air Inlet (NPT)	19 mm	3/4 in
Air Consumption*	2.10 m ³ /m	73 cfm
Water Consumption	4.8 l / min	

*estimated

**FOR OPTIMUM PERFORMANCE, DO NOT OPERATE
TOOL ABOVE 90 PSI (6 BAR) WORKING PRESSURE.**

WARNING:

**ALWAYS DISCONNECT THE AIR SUPPLY BEFORE
CHANGING CHISELS OR DISMANTLING THE TOOL
FOR SERVICE OR REPAIR. FOR MAXIMUM SAFETY
WE ADVISE THE INSTALLATION OF A SHUT-OFF
VALVE AT THE END OF THE AIR LINE.**

**DO NOT EXCEED 100 PSI (7BAR) WORKING
PRESSURE.**