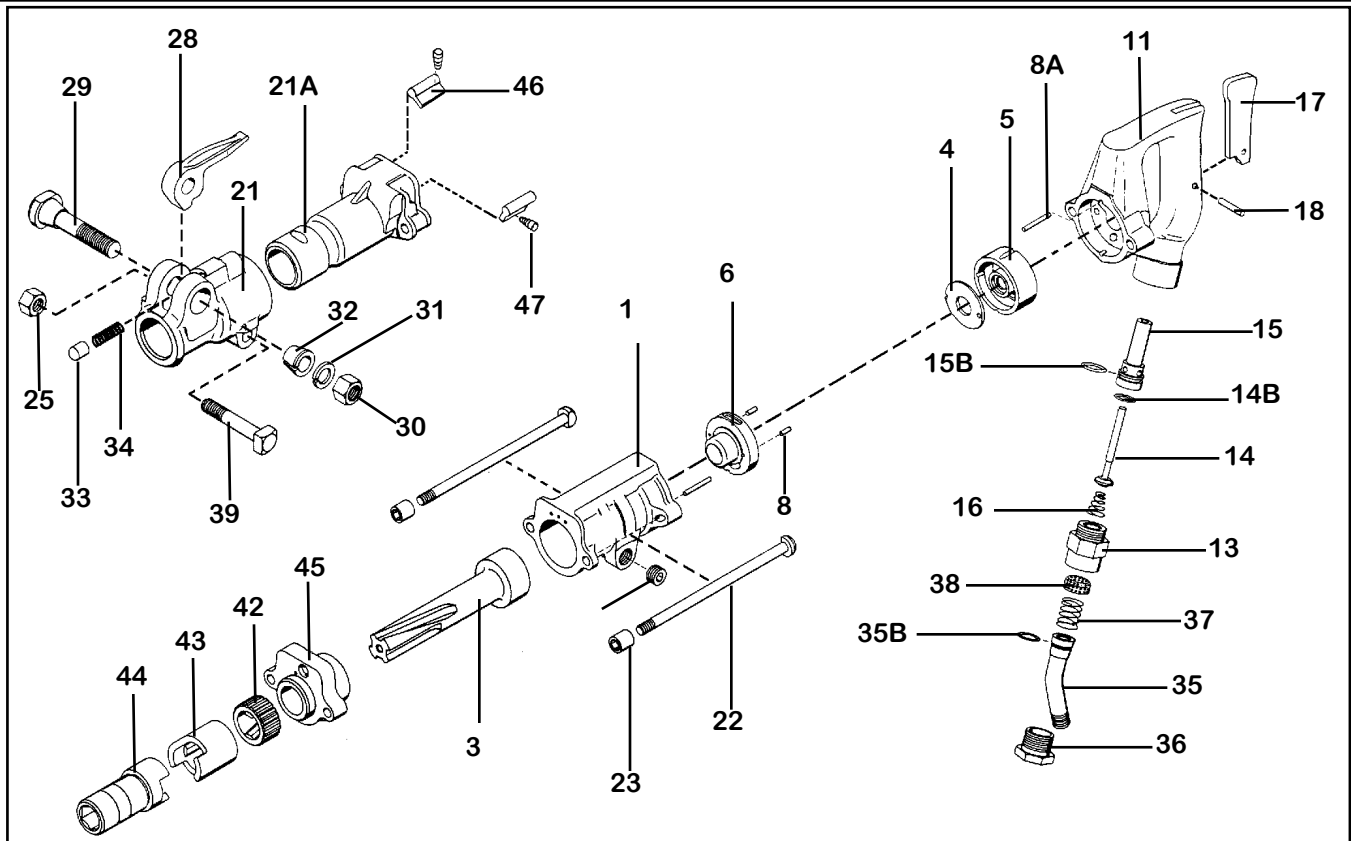


# PARTS LIST LIGHT ROCK DRILL 20 lb. class KT-RD20



INDEX	PART	DESCRIPTION	INDEX	PART	DESCRIPTION
1	7201	CYLINDER	33	6333	PLUNGER
3	7203D	PISTON	34	6234	PLUNGER SPRING
4	7204	VALVE	35	6335	AIR INLET SWIVEL
5	7205	UPPER VALVE BLOCK	35B	6346	AIR INLET SWIVEL O-RING
6	7206D	LOWER VALVE PLATE	36	6336	AIR INLET SWIVEL NUT
8	7208	DOWEL PIN (2)	37	6347	INLET SWIVEL SPRING
8A	7208A	LOCATION PIN (2)	38	6338	AIR INLET SCREEN
11	7211	HANDLE BARE	39	6339	FRONTHEAD BOLT
13	7213	HANDLE BUSHING	42	7242	RATCHET RING
13B	7213B	HANDLE BUSHING O-RING (NS)	43	7243	CHUCK DRIVER
14	7214	THROTTLE VALVE	44	7244	CHUCK 7/8" X 3 1/4"
14B	7214B	THROTTLE VALVE O-RING	45	7245D	FRONT BEARING
15	7215	THROTTLE VALVE BUSHING	46	7246D	PAWL (2)
15B	7215B	THROTTLE VALVE BUSHING O-RING	47	7247	PAWL SPRING (2)
16	7216	THROTTLE VALVE SPRING			
17	7217	THROTTLE LEVER			
18	7218	THROTTLE LEVER PIN			
21	7221	FRONTHEAD			
21A	7221A	FRONTHEAD HOLDER 7/8" X 3 1/4"			
22	7222	SIDE ROD			
23	7223	SIDE ROD NUT			
25	6325	FRONTHEAD BOLT NUT			
28	7228	LATCH RETAINER (FORGED)			
29	6329	RETAINER BOLT			
30	6330	RETAINER BOLT NUT			
31	6331	LOCK WASHE			
32	6332	CONE WASHER			

# LIGHT WEIGHT ROCK DRILL 20 lb. class KT-RD20

---



WHEN ORDERING REPLACEMENT PARTS, FURNISH THE MODEL NUMBER(S) AND SERIAL NUMBER (S) OF YOUR TOOLS.

## Specifications KT-RD20

---

<b>Net Weight</b>	7.5 kg	16.5 lbs
<b>Length</b>	483 mm	19 in
<b>Bore</b>	49.18 mm	1.9375 in
<b>Stroke</b>	48 mm	1.89 in
<b>Blows per minute</b>	2900	2900
<b>Chuck Sizes</b>	22 x 108 mm	7/8 x 4 1/4 in
	22 x 83 mm	7/8 x 3 1/4 in
<b>Air Inlet (NPT)</b>	10 mm	3/8 in
<b>Air Consumption*</b>	1.2 m <sup>3</sup> /m	36 cfm

\*estimated

### **WARNING:**

**ALWAYS DISCONNECT THE AIR SUPPLY BEFORE CHANGING CHISELS OR DISMANTLING THE TOOL FOR SERVICE OR REPAIR. FOR MAXIMUM SAFETY WE ADVISE THE INSTALLATION OF A SHUT-OFF VALVE AT THE END OF THE AIR LINE.**