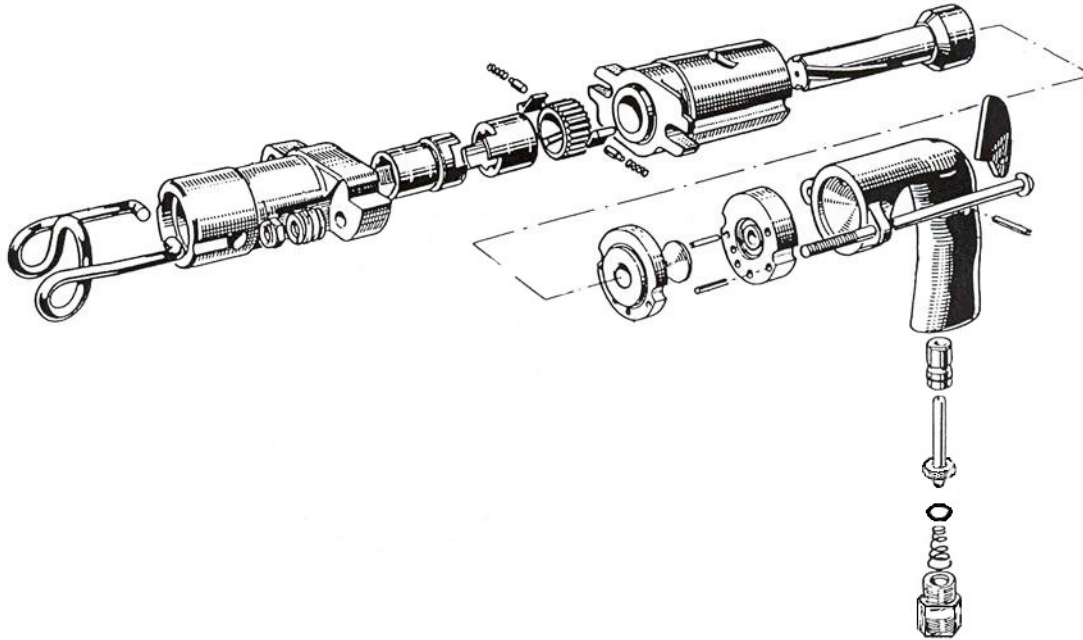


LIGHT ROCK DRILL

12 LB CLASS

KT-RD12



| INDEX | PART | DESCRIPTION | INDEX | PART | DESCRIPTION |
|-------|---------|---------------------------|-------|---------|--------------------------|
| 1 | KT6801 | CYLINDER | 18 | KT6175B | INLET BUSHING O-RING |
| 3 | KT6803 | PISTON | 19 | KT6819 | SIDE ROD (2) |
| 4 | KT6804 | VALVE DISC | 20 | KT6820 | SIDE ROD SPRING (2) |
| 5 | KT6805 | VALVE PLATE UPPER | 21 | KT6821 | SIDE ROD ACORN NUT (2) |
| 6 | KT6806 | VALVE PLATE LOWER | 22 | KT6822 | PAWL (2) |
| 8 | KT6808 | DOWEL PIN (2) | 23 | KT6823 | PAWL PLUNGER (2) |
| 11 | KT6811 | HANDLE (W/BUSHING 6802) | 24 | KT6824 | PAWL SPRING (2) |
| 12 | KT6812 | TRIGGER FULCRUM PIN | 25 | KT6825 | RATCHET RING |
| 13 | KT6813 | TRIGGER | 26 | KT6826 | CHUCK DRIVE |
| 14 | KT6814 | THROTTLE VALVE | 27 | KT6827 | CHUCK SLEEVE 3/4 X 2" |
| 14B | KT6614B | THROTTLE VALVE O-RING | 28 | KT6828 | FRONT HEAD |
| 15 | KT6815 | THROTTLE VALVE BUSHING | 29 | KT6290 | RETAINER SPRING |
| 16 | KT6816 | THROTTLE VALVE SPRING | | | |
| 17 | KT6817 | AIR INLET BUSHING 1/2"NPT | | | |

LIGHT ROCK DRILL

12 LB CLASS

KT-RD12



Specifications

| | | |
|-------------------------|-----------------------|------------|
| Net Weight | 5.03kg | 11.08 lbs |
| Length | 410 mm | 16.5 in |
| Bore | 28 mm | 1.125 in |
| Stroke | 60 mm | 2.375 in |
| Blows per minute | 2800 | 2800 |
| RPM | 300 | 300 |
| Chuck Sizes | 19 x 50 mm | 3/4 x 2 in |
| Air Inlet (NPT) | 1/2" NPT | 1/2" NPT |
| Air Consumption* | .45 m ³ /m | 15.8 cfm |

*estimated

WARNING:

ALWAYS DISCONNECT THE AIR SUPPLY BEFORE CHANGING CHISELS OR DISMANTLING THE TOOL FOR SERVICE OR REPAIR. FOR MAXIMUM SAFETY WE ADVISE THE INSTALLATION OF A SHUT-OFF VALVE AT THE END OF THE AIR LINE.