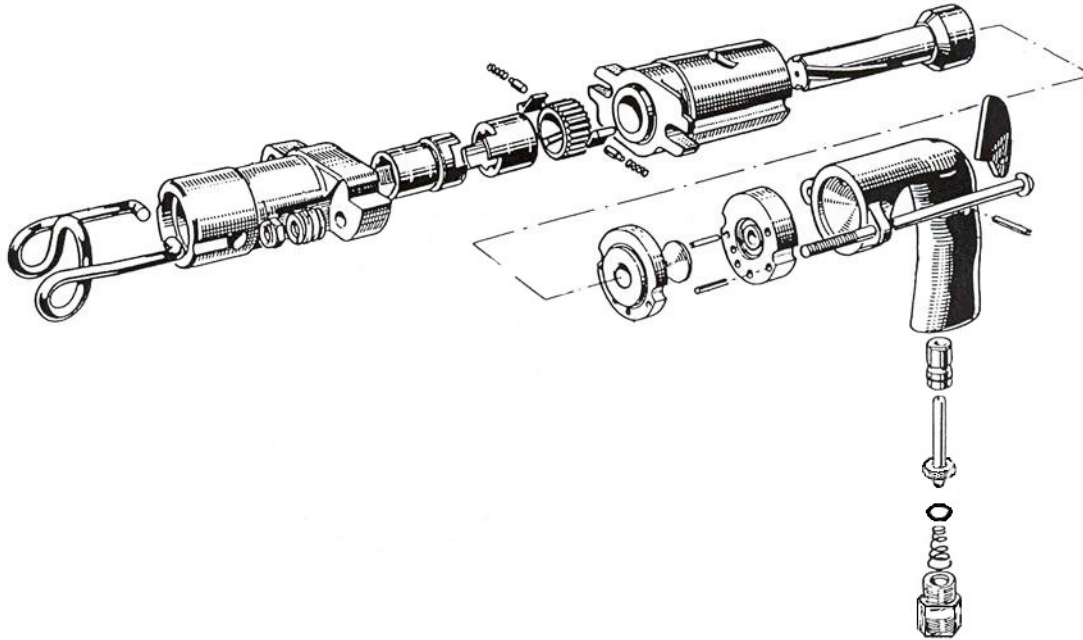


# LIGHT ROCK DRILL

# 12 LB CLASS

# KT-RD12



INDEX	PART	DESCRIPTION	INDEX	PART	DESCRIPTION
1	KT6801	CYLINDER	18	KT6175B	INLET BUSHING O-RING
3	KT6803	PISTON	19	KT6819	SIDE ROD ( 2 )
4	KT6804	VALVE DISC	20	KT6820	SIDE ROD SPRING ( 2 )
5	KT6805	VALVE PLATE UPPER	21	KT6821	SIDE ROD ACORN NUT ( 2 )
6	KT6806	VALVE PLATE LOWER	22	KT6822	PAWL ( 2 )
8	KT6808	DOWEL PIN (2)	23	KT6823	PAWL PLUNGER ( 2 )
11	KT6811	HANDLE (W/BUSHING 6802)	24	KT6824	PAWL SPRING ( 2 )
12	KT6812	TRIGGER FULCRUM PIN	25	KT6825	RATCHET RING
13	KT6813	TRIGGER	26	KT6826	CHUCK DRIVE
14	KT6814	THROTTLE VALVE	27	KT6827	CHUCK SLEEVE 3/4 X 2"
14B	KT6614B	THROTTLE VALVE O-RING	28	KT6828	FRONT HEAD
15	KT6815	THROTTLE VALVE BUSHING	29	KT6290	RETAINER SPRING
16	KT6816	THROTTLE VALVE SPRING			
17	KT6817	AIR INLET BUSHING 1/2"NPT			

**LIGHT ROCK DRILL**

**12 LB CLASS**

**KT-RD12**

---

**Specifications**

---

<b>Net Weight</b>	5.03kg	11.08 lbs
<b>Length</b>	410 mm	16.5 in
<b>Bore</b>	28 mm	1.125 in
<b>Stroke</b>	60 mm	2.375 in
<b>Blows per minute</b>	2800	2800
<b>RPM</b>	300	300
<b>Chuck Sizes</b>	19 x 50 mm	3/4 x 2 in
<b>Air Inlet (NPT)</b>	1/2" NPT	1/2" NPT
<b>Air Consumption*</b>	.45 m <sup>3</sup> /m	15.8 cfm

\*estimated

**WARNING:**

**ALWAYS DISCONNECT THE AIR SUPPLY BEFORE CHANGING CHISELS OR DISMANTLING THE TOOL FOR SERVICE OR REPAIR. FOR MAXIMUM SAFETY WE ADVISE THE INSTALLATION OF A SHUT-OFF VALVE AT THE END OF THE AIR LINE.**