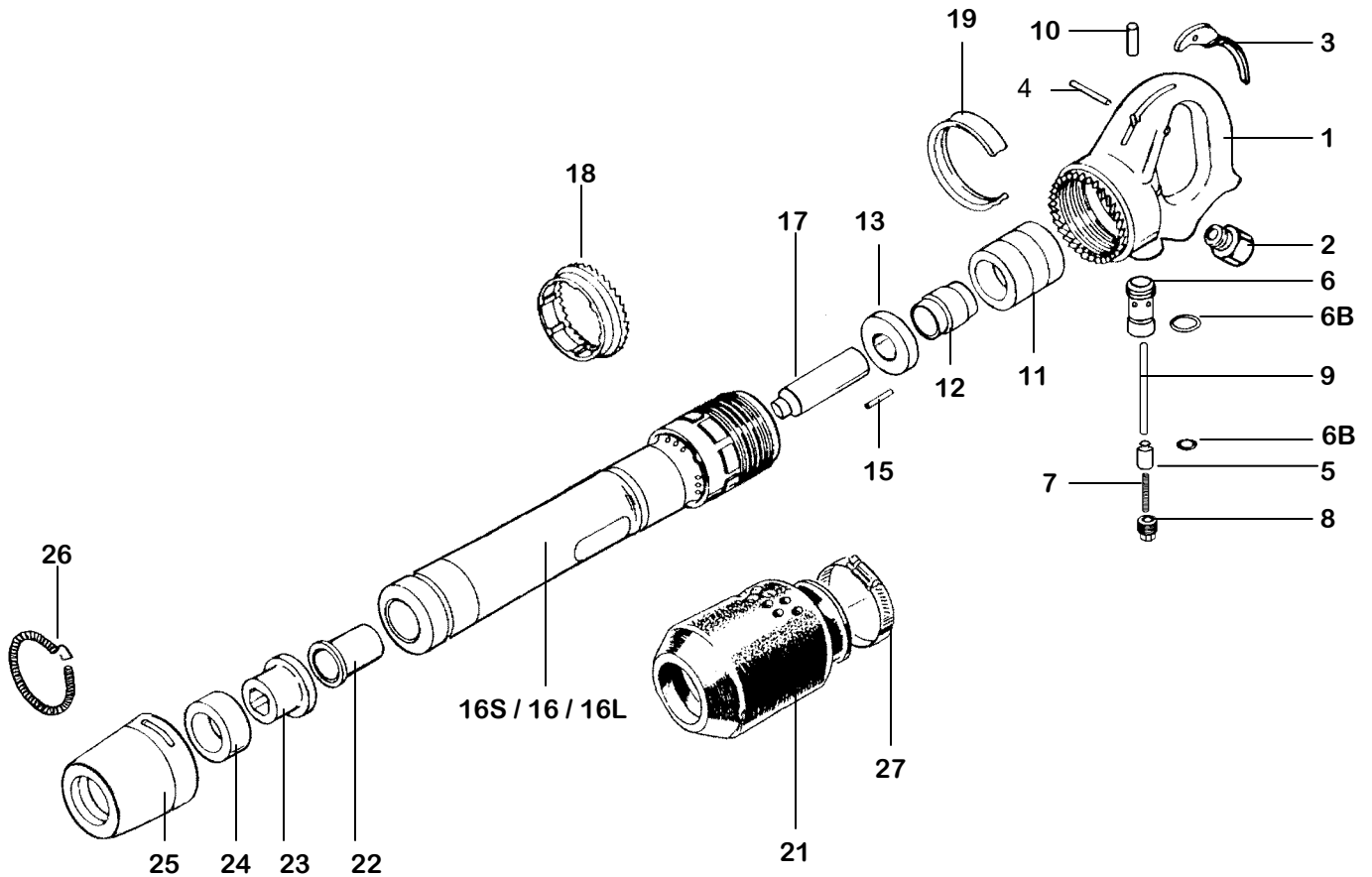


# RIVET BUSTER

KT-RB 6/8/11



INDEX	PART	DESCRIPTION	INDEX	PART	DESCRIPTION
1	KT6761	HANDLE BARE (INCL. 6770)	16S	KT6776SB	BARREL (#6)
NS	KT6762	HANDLE COMPLETE	16	KT6776B	BARREL (#8)
3	KT6763	THROTTLE LEVER	16L	KT6776LB	BARREL (#11)
4	KT6764	THROTTLE LEVER PIN	17	KT6777B	PISTON 3"
5	KT6765	THROTTLE VALVE	18	KT6778	HANDLE LOCK RING HANDLE
6	KT6766	THROTTLE VALVE BUSHING	19	KT6779	LOCK SPRING HANDLE
6A	KT6766A	THROTTLE BUSHING O-RING	20	KT6780	BUSHING
6B	KT6766B	THROTTLE VALVE O-RING	21	KT6569B	MUFFLER
7	KT6767	THROTTLE VALVE SPRING	22	KT6682	UPPER SLEEVE
8	KT6768	THROTTLE VALVE PLUG	23	KT6083	LOWER SLEEVE
9	KT6769	PUSH PIN	24	KT6084	BUMPER (POLY)
10	KT6770	PUSH PIN BUSHING	25	KT6085	RETAINER
11	KT6771	VALVE BOX	26	KT6686	RETAINER SPRING
12	KT6772	VALVE	27	KT6570	MUFFLER CLAMP(STAINLESS)
13	KT6773	VALVE COVER FRONT	NS	KT6235	SWIVEL (OPTIONAL)
NS	KT6774	VALVE ASSEMBLY			
15	KT6775	VALVE DOWEL PIN			

# RIVET BUSTER      26, 30, & 40 lb. class      RB6, RB8, & RB11

---



## Specifications      KT-RB6

---

<b>Net Weight</b>	12 kg	26 lbs
<b>Length</b>	522 mm	20 1/2 in
<b>Bore</b>	30 mm	1.1875 in
<b>Stroke</b>	153 mm	6 in
<b>Blows per minute</b>	1200	1200
<b>Chuck Sizes</b>	11 X Jumbo	
<b>Air Inlet (NPT)</b>	12 mm	1/2 in
<b>Air Consumption*</b>	1.3 m <sup>3</sup> /m	44 cfm

## Specifications      KT-RB8

---

<b>Net Weight</b>	14 kg	30 lbs
<b>Length</b>	572 mm	22 1/2 in
<b>Bore</b>	30 mm	1.1875 in
<b>Stroke</b>	203 mm	8 in
<b>Blows per minute</b>	1140	1140
<b>Chuck Sizes</b>	11 X Jumbo	
<b>Air Inlet (NPT)</b>	12 mm	1/2 in
<b>Air Consumption*</b>	1.3 m <sup>3</sup> /m	44 cfm



## Specifications      KT-RB11

---

<b>Net Weight</b>	15 kg	33 lbs
<b>Length</b>	648 mm	25 1/2 in
<b>Bore</b>	30 mm	1.1875 in
<b>Stroke</b>	279 mm	11 in
<b>Blows per minute</b>	850	850
<b>Chuck Sizes</b>	11 X Jumbo	
<b>Air Inlet (NPT)</b>	12 mm	1/2 in
<b>Air Consumption*</b>	1.41 m <sup>3</sup> /m	50 cfm



\*estimated