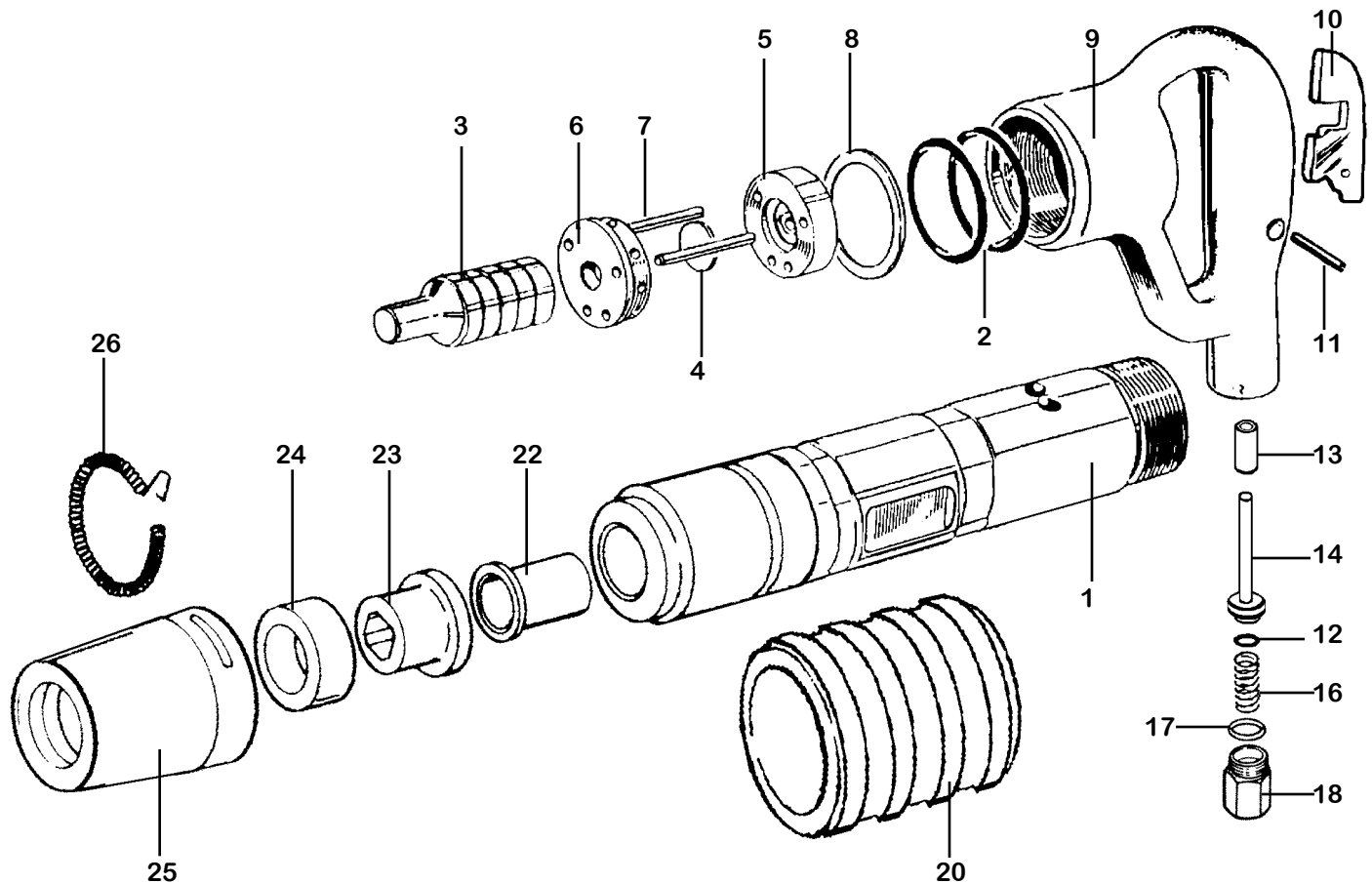


PARTS LIST RIVET BUSTER 20 lb. class KT-RB5



INDEX	PART	DESCRIPTION	INDEX	PART	DESCRIPTION
1	KT6549	CYLINDER	20	KT6520	MUFFLER
2	KT6552	CYLINDER "O" RING (2)	22	KT6682	UPPER SLEEVE BUSHING
3	KT6553	PISTON	23	KT6083	LOWER SLEEVE BUSHING
4	KT6554	VALVE DISC	24	KT6084	RETAINER BUMPER (URETHANE)
5	KT6555	VALVE PLATE UPPER	25	KT6085	RETAINER
6	KT6556	VALVE PLATE LOWER	26	KT6686	RETAINER SPRING
7	KT6557	DOWEL PIN (2)	NS	KT6235	SWIVEL
8	KT6558	PACKING RING (2)			
9	KT6559	HANDLE BARE			
NS	KT6559C	HANDLE COMPLETE			
10	KT6560	THROTTLE LEVER			
11	KT6561	THROTTLE LEVER PIN			
12	KT6562	PUSH ROD "O" RING			
13	KT6581	THROTTLE VALVE BUSHING			
14	KT6564N	THROTTLE VALVE			
16	KT6566	THROTTLE VALVE SPRING			
17	KT6567	AIR INLET O-RING			
18	KT6568N	AIR INLET			

Note: When re-assembling this tool following cleaning or any service/repair, it is necessary to replace the two packing rings (PN: KT6558, INDEX # 8) inside the handle. This helps lock the handle in the tightened position. A small amount of a thread locking compound may be applied during re-assembly to help prevent the handle from vibrating loose during operation.

RIVET BUSTER

20 lb. class

KT-RB5



WHEN ORDERING REPLACEMENT PARTS, FURNISH THE MODEL NUMBER(S) AND SERIAL NUMBER (S) OF YOUR TOOLS.

Specifications KT-RB5

Net Weight	10.5 kg	23 lbs
Length	432 mm	17 in
Bore	36 mm	1.418 in
Stroke	70 mm	2.75 in
Blows per minute	1560	1560
Chuck Sizes	11 X JUMBO	
Air Inlet (NPT)	19 mm	3/4 in male
	22.2 mm	7/8 in female
Air Consumption*	1.2 m ³ /m	40 cfm

*estimated

WARNING:

ALWAYS DISCONNECT THE AIR SUPPLY BEFORE CHANGING CHISELS OR DISMANTLING THE TOOL FOR SERVICE OR REPAIR. FOR MAXIMUM SAFETY WE ADVISE THE INSTALLATION OF A SHUT-OFF VALVE AT THE END OF THE AIR LINE.