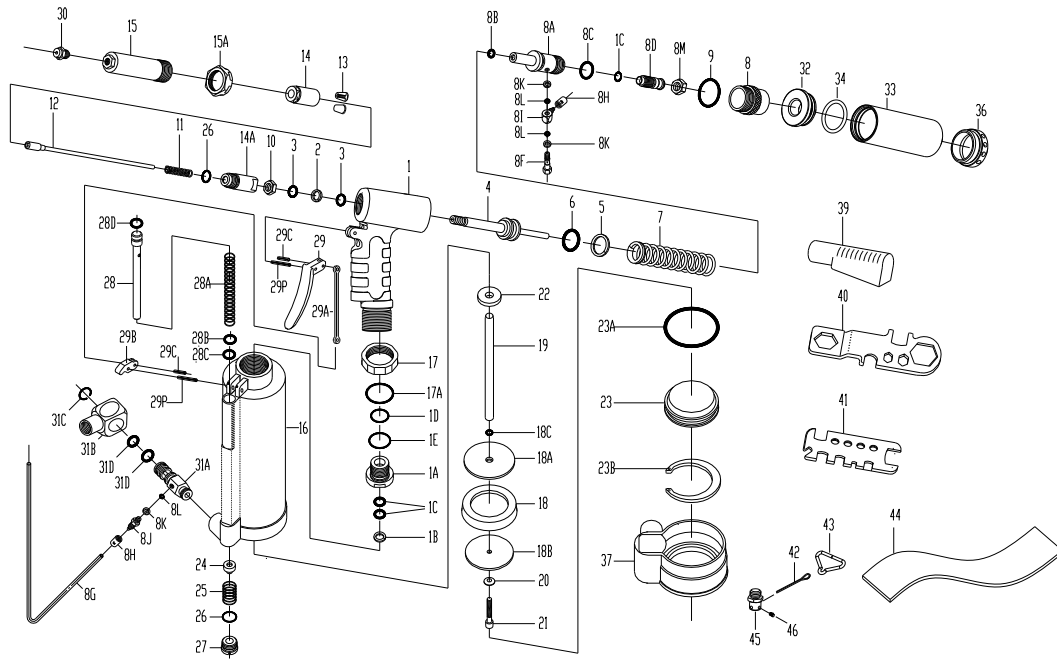


# KT-R0918V 3/16" (4.8mm) Cap. Air-Hydraulic Riveter W/Vacuum



## KT-R0918V 3/16" (4.8mm) Cap. Air-Hydraulic Riveter W/Vacuum

### TECHNICAL DATA

Blind Rivet Setting Capacity	: All blind rivets and blind structural rivets up to and including 3/16"(4.8mm) diameter in all materials.
Operating Air Pressure	: 5 - 7 Bar (70 - 100 Psi)
Traction Power @ 90 Psig	: 900 KgF (1,983 LbF)
Stroke Length	: 18mm (11/16")
Tool Height	: 315mm (12-3/8")
Tool Width	: 191mm (7-1/2")
Tool Weight	: 1.85Kg (4.07 Lb)
Min. Hose Size	: 9.5mm (3/8") I.D.
Air Inlet Size	: 1/4" NPTF
Hydraulic Fluid	: Shell Hydraulic Fluid or Equivalent

## PARTS LIST

Index	Part #	Description	Index	Part #	Description	Index	Part #	Description
1.	KT-918111CEI	Hydraulic Section	14.	KT-612324A	Jaw Housing	29A.	KT-918622	Linkage
1A.	KT-918108	Plunger Rod Guide	14A.	KT-612305	Jaw Housing Coupler	29B.	KT-918603	Rocker Arm
*1B.	KT-BR0913	Back-Up Ring	15.	KT-612105-B	Head	29C.	KT-SP3006	Spring Pin (2)
*1C.	KT-OR0913A	O-Ring (3)	15A.	KT-918106A	Lock Nut	29P.	KT-SP3018	Spring Pin (2)
*1D.	KT-OR1823	O-Ring	16.	KT-918401CEI	Air Cylinder Body	30.	KT-612703-A	Nosepiece 3/32"(2.4mm)
*1E.	KT-OR2227	O-Ring	17.	KT-918109	Lock Nut		KT-612704-A	Nosepiece 1/8" (3.2mm)
*2.	KT-BR1014	Back-Up Ring	*17A.	KT-OR2832	O-Ring		KT-612705-A	Nosepiece 5/32" (4.0mm)
*3.	KT-OR1014A	O-Ring (2)	18.	KT-918502	Packing Ring		KT-612706-B	Nosepiece 3/16" (4.8mm)
4.	KT-918301	Hydraulic Plunger	18A.	KT-918503	Front Head Disc	31.	KT-92L2A18AV	Swivel Joint Assy (31A-31D) (ns)
*5.	KT-BR2025	Back-Up Ring	18B.	KT-918504	Rear Head Disc	31A.	KT-612725	Male Inlet Body
*6.	KT-OR2025A	O-Ring	18C.	KT-OR0509	O-Ring	31B.	KT-92203A	Female Inlet Body (1/4"-18NPTF)
7.	KT-918309	Return Spring (Y)	19.	KT-918501	Plunger Rod	31C.	KT-EC1317	Snap Ring
8.	KT-918112	Rear Gland	20.	KT-PW0516	Washer	31D.	KT-OR1116	O-Ring (2)
8A.	KT-612123	Vacuum Tube	21.	KT-508020	Lock Screw	32.	KT-819914	Front Cap
*8B.	KT-OR0609	O-Ring	*22.	KT-918505	Bumper Ring	33.	KT-819901	Collection Bottle
*8C.	KT-OR1621	O-Ring	22A.	KT-918500	Piston Assy. (18-22)	34.	KT-OR3036	O-Ring
8D.	KT-612114	Vacuum Regulator	23.	KT-918402	(ns)	36.	KT-819922	Rear Cap
8F.	KT-612713	Socket	23A.	KT-OR5461	Air Cylinder Cap	37.	KT-918403	Rubber Boot
8G.	KT-918716	Air Hose	23B.	KT-CH6063	O-Ring	39.	KT-612901	Deflector
8H.	KT-612711	Gap (2)	24.	KT-918207	Retaining Ring	40.	KT-612904	Multi-Wrench (A)
8I.	KT-612712	Swivel	25.	KT-656204	Throttle Valve	41.	KT-918905	Multi-Wrench (B)
8J.	KT-612717	Socket (Lower)	26.	KT-OR1417	Throttle Valve Spring	42.	KT-918908	Clip
8K.	KT-612714	Washer (3)	27.	KT-612206	O-Ring (2)	43.	KT-918907	Hanger
8L.	KT-OR0306	O-Ring (3)	28.	KT-918200	Valve Plug	44.	KT-918906	Arm Supporter
8M.	KT-612115	Lock Nut	28A.	KT-918204	Valve Tube Assy	45.	KT-918909	Hanger Holder
9.	KT-OR2225	O-Ring	28B.	KT-918202	Valve Tube Spring	46.	KT-030504	Set Screw
10.	KT-918306	Nut	*28C.	KT-OR0611	Brass Collar			
11.	KT-612308	Spring	28D.	KT-OR0812	O-Ring			
12.	KT-612312	Jaw Pusher	29.	KT-612611	O-Ring			
*13.	KT-612303	Jaw "M" (2)			Trigger			