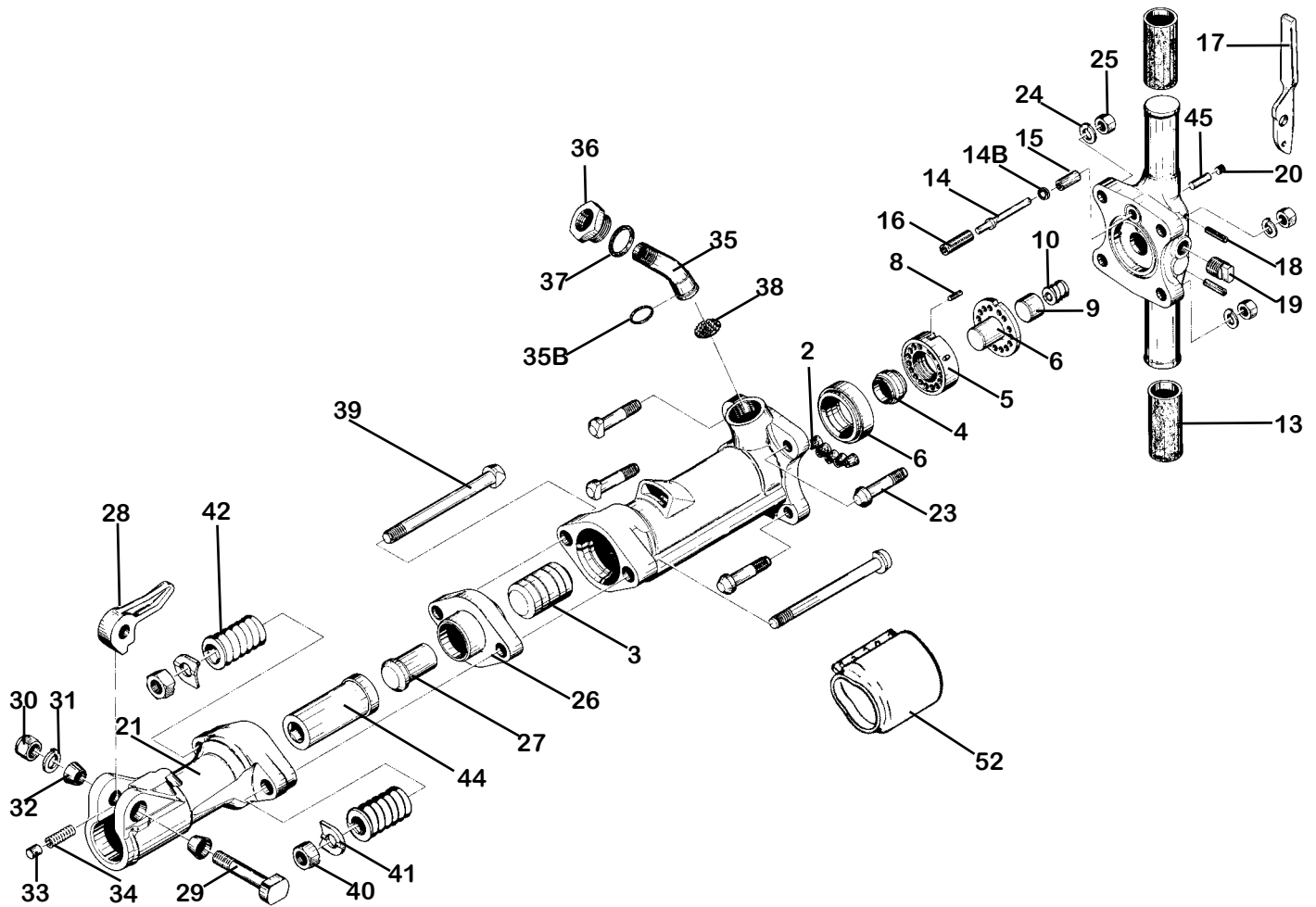


PARTS LIST PAVEMENT BREAKER 90 lb. class KT-PB90



INDEX	PART	DESCRIPTION	INDEX	PART	DESCRIPTION
1	KT6001	CYLINDER	30	KT6630	STEEL RETAINER BOLT NUT
2	KT6602	CYLINDER PLUGS (5)	31	KT6631	STEEL RETAINER LOCKWASHER
3	KT6003	PISTON	32	KT6632	RETAINER BOLT BUSHING(RUBBER)(2)
4	KT6604	AUTOMATIC VALVE	NS	KT6651	RETAINER BOLT BUSHING(STEEL)(2)
5	KT6005	VALVE CHEST	33	KT6633	STEEL RETAINER PLUNGER
6	KT6006	VALVE SEAT	34	KT6634	RETAINER PLUNGER SPRING
7	KT6007	VALVE GUIDE	35	KT6035	AIR INLET SWIVEL
8	KT6608	VALVE DOWEL PIN	35B	KT6766A	AIR INLET SWIVEL O-RING
9	KT6609	BACKHEAD PLUNGER	36	KT6036	AIR INLET SWIVEL NUT
10	KT6610	BACKHEAD PLUNGER SPRING	37	KT6037	SWIVEL NUT O-RING
11	KT6011	BACKHEAD BARE (incl.#6615)	38	KT6038	AIR INLET SCREEN
NS	KT6011C	BACKHEAD ASSBLY. COMPLETE	39	KT6039	FRONTHEAD BOLT (2)
NS	KT6612	BACKHEAD VALVE PORT O-RING	40	KT6640	FRONTHEAD BOLT NUT(2)
13	KT6613	RUBBER GRIP (2)	41	KT6641	FRONTHEAD BOLT LOCKWASHER (2)
14	KT6614	THROTTLE VALVE	42	KT6642	FRONTHEAD BOLT SPRING(2)
15	KT6615	THROTTLE VALVE SLEEVE	44	KT6644A	FRONTHEAD BUSHING 1-1/8"HEX
16	KT6616	THROTTLE VALVE SPRING	44	KT6644B	FRONTHEAD BUSHING 1-1/4"HEX
17	KT6617	THROTTLE LEVER	45	KT6645	OIL CONTROL FELT
18	KT6618	THROTTLE LEVER PIN (2)	NS	KT6046	FRONTHEAD w/1-1/8" HEX BUSHING
19	KT6019	OIL RESERVOIR PLUG	NS	KT6047	FRONTHEAD w/1-1/4" HEX BUSHING
20	KT6620	OIL CONTROL FELT PLUG	NS	KT6048	FRONTHEAD ASSBLY. w/1-1/8" HEX
21	KT6021	FRONTHEAD BARE	NS	KT6049	FRONTHEAD ASSBLY.w/1-1/4" HEX
23	KT6023	BACKHEAD BOLT (4)	NS	KT6050	OIL TANK PLUG
24	KT6624	BACKHEAD BOLT LOCKWASHER (4)	NS	KT6052	MUFFLER ASSBLY.(OPTIONAL)
25	KT6625	BACKHEAD BOLT NUT (4)			
26	KT6026	TAPPET SEAT			
27	KT6027	TAPPET			
28	KT6628	STEEL REAINER (FORGED)			
29	KT6629	STEEL RETAINER BOLT			

PAVEMENT BREAKER 90 lb. class KT-PB90

WHEN ORDERING REPLACEMENT PARTS, FURNISH THE MODEL NUMBER(S) AND SERIAL NUMBER(S) OF YOUR TOOLS.



Specifications

Net Weight	42 kg	92.5 lbs
Length	730 mm	28.75 in
Bore	66.67 mm	2.625 in
Stroke	154 mm	6.0625 in
Blows per minute	1250	1250
Chuck Sizes	32 x 154 mm	1 1/4 x 6 in
	28 x 154 mm	1 1/8 x 6 in
Air Inlet (NPT)	19 mm	3/4 in
Air Consumption*	2.1 m ³ /m	75 cfm

*estimated

**WHEN ORDERING TOOLS
SPECIFY CHUCK SIZE**

WARNING:
ALWAYS DISCONNECT THE AIR SUPPLY BEFORE CHANGING CHISELS OR DISMANTLING THE TOOL FOR SERVICE OR REPAIR. FOR MAXIMUM SAFETY WE ADVISE THE INSTALLATION OF A SHUT-OFF VALVE AT THE END OF THE AIR LINE.