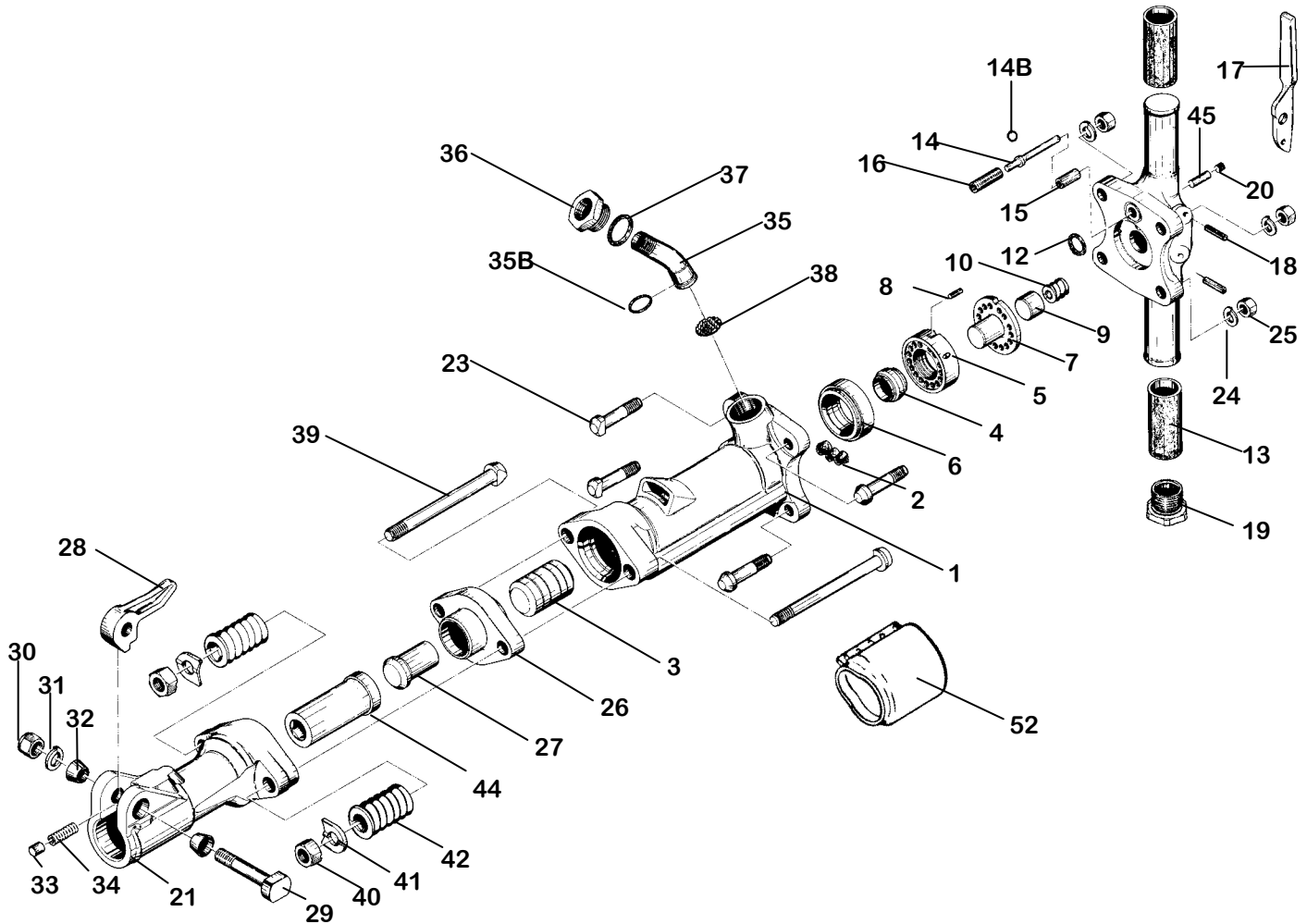


PARTS LIST PAVEMENT BREAKER 60 lb.class KT-PB60



INDEX	PART	DESCRIPTION
-------	------	-------------

1	KT6601	CYLINDER
2	KT6602	CYLINDER PLUGS (3)
3	KT6603	PISTON
4	KT6604	AUTOMATIC VALVE
5	KT6605	VALVE CHEST
6	KT6606	VALVE SEAT
7	KT6607	VALVE GUIDE
8	KT6608	VALVE DOWEL PIN
9	KT6609	BACKHEAD PLUNGER
10	KT6610	BACKHEAD PLUNGER SPRING
11	KT6611	BACKHEAD BARE (incl. #6615)
NS	KT6611C	BACKHEAD ASSBLY. COMPLETE
12	KT6612	BACKHEAD VALVE PORT O-RING
13	KT6613	RUBBER GRIP(2)
14	KT6614	THROTTLE VALVE
14B	KT6614B	THROTTLE VALVE O-RING
15	KT6615	THROTTLE VALVE SLEEVE
16	KT6616	THROTTLE VALVE SPRING
17	KT6617	THROTTLE LEVER
18	KT6618	THROTTLE LEVER PIN (2)
19	KT6619	OIL RESERVOIR PLUG
20	KT6620	OIL CONTROL FELT PLUG
21	KT6621	FRONTHEAD BARE
23	KT6623	BACKHEAD BOLT (4)
24	KT6624	BACKHEAD BOLT LOCKWASHER (4)
25	KT6625	BACKHEAD BOLT NUT (4)
26	KT6626	TAPPET SEAT
27	KT6627	TAPPET
28	KT6628	STEEL RETAINER (FORGED)
29	KT6629	STEEL RETAINER BOLT
30	KT6630	STEEL RETAINER BOLT NUT
31	KT6631	STEEL RETAINER LOCKWASHER
32	KT6632	RETAINER BOLT BUSHING (RUBBER)(2)

INDEX	PART	DESCRIPTION
-------	------	-------------

33	KT6633	STEEL RETAINER PLUNGER
34	KT6634	RETAINER PLUNGER SPRING
35	KT6035	AIR INLET SWIVEL
35B	KT6035B	AIR INLET SWIVEL O-RING
36	KT6036	AIR INLET SWIVEL NUT
37	KT6037	SWIVEL NUT O-RING
38	KT6038	AIR INLET SCREEN
39	KT6639	FRONTHEAD BOLT(2)
40	KT6640	FRONTHEAD BOLT NUT(2)
41	KT6641	FRONTHEAD BOLT LOCKWASHER(2)
42	KT6642	FRONTHEAD BOLT SPRING(2)
44	KT6644A	FRONTHEAD BUSHING 1-1/8" HEX
44	KT6644B	FRONTHEAD BUSHING 1-1/4" HEX
45	KT6645	OIL CONTROL FELT
NS	KT6646	FRONTHEAD w/1-1/8" HEX BUSHING
NS	KT6647	FRONTHEAD w/1-1/4" HEX BUSHING
NS	KT6649	FRONTHEAD ASSBLY. w/1-1/8" HEX
NS	KT6650	FRONTHEAD ASSBLY. w/1-1/4" HEX
NS	KT6652	MUFFLER ASSBLY. (OPTIONAL)

PAVEMENT BREAKER 60 lb. class KT-PB60



WHEN ORDERING REPLACEMENT PARTS, FURNISH THE MODEL NUMBER(S) AND SERIAL NUMBER(S) OF YOUR TOOLS.

Specifications

Net Weight	30 kg	67 lbs
Length	651 mm	25.625 in
Bore	57 mm	2.25 in
Stroke	104 mm	4.0937 in
Blows per minute	1400	1400
Chuck Sizes	32 x 154 mm	1 1/4 x 6 in
	28 x 154 mm	1 1/8 x 6 in
Air Inlet (NPT)	19 mm	3/4 in
Air Consumption*	1.70 m ³ /m	59 cfm

*estimated

**WHEN ORDERING TOOLS
SPECIFY CHUCK SIZE**

WARNING:

ALWAYS DISCONNECT THE AIR SUPPLY BEFORE CHANGING CHISELS OR DISMANTLING THE TOOL FOR SERVICE OR REPAIR. FOR MAXIMUM SAFETY WE ADVISE THE INSTALLATION OF A SHUT-OFF VALVE AT THE END OF THE AIR LINE.