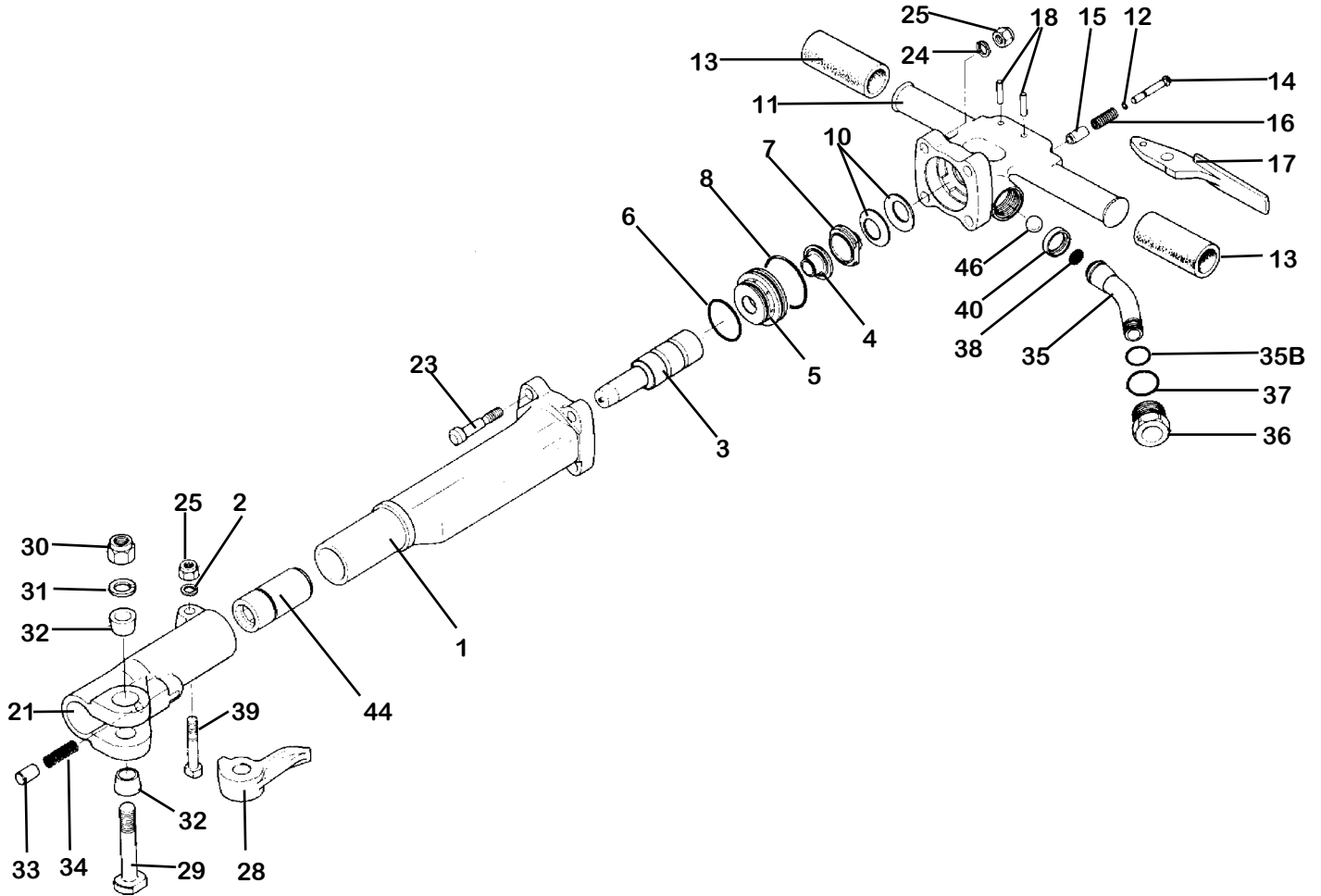


# PARTS LIST PAVEMENT BREAKER 40 lb. class KT-PB40



INDEX	PART	DESCRIPTION	INDEX	PART	DESCRIPTION
1	KT6401	CYLINDER	28	KT6428	STEEL RETAINER (FORGED)
3	KT6403	PISTON	29	KT6629	RETAINER BOLT
4	KT6404	AUTOMATIC VALVE	30	KT6630	RETAINER BOLT NUT
5	KT6405	VALVE CHEST	31	KT6631	RETAINER BOLT LOCK WASHER
6	KT6406	VALVE CHEST O-RING, LOWER	32	KT6632	RETAINER BOLT BUSHING (2)
7	KT6407	VALVE COVER	33	KT6633	RETAINER PLUNGER
8	KT6408	VALVE CHEST O-RING, UPPER	34	KT6634	RETAINER PLUNGER SPRING
10	KT6410	BACKHEAD SPRING (2)	35	KT6635	AIR INLET SWIVEL 1/2" NPT
11	KT6411	BACKHEAD BARE (INCL.#6415)	35B	KT6766A	INLET SWIVEL O-RING
NS	KT6411C	BACKHEAD ASSBLY.	36	KT6436	AIR INLET SWIVEL NUT
12	KT6412	THROTTLE VALVE O-RING	37	KT6437	AIR INLET SWIVEL NUT O-RING
13	KT6413	HANDLE GRIP (2)	38	KT6438	AIR INLET SCREEN
14	KT6414	THROTTLE VALVE	39	KT6439	FRONTHEAD BOLT
15	KT6415	THROTTLE VALVE BUSHING	40	KT6440	AIR INLET SPACER
16	KT6416	THROTTLE VALVE SPRING	44	KT6444	CHUCK BUSHING 1" x 4 1/4" HEX
17	KT6617	THROTTLE LEVER	46	KT6446	THROTTLE VALVE BALL
18	KT6618	THROTTLE LEVER PIN	52	KT6452	MUFFLER ASSEMBLY
21	KT6421	FRONTHEAD BARE			
NS	KT6421C	FRONTHEAD COMPLETE			
23	KT6323	BACKHEAD BOLT (4)			
24	KT6324	BOLT WASHER (5)			
25	KT6325	BOLT NUT (5)			

# PAVEMENT BREAKER

40 lb. class

KT- PB40

---



WHEN ORDERING REPLACEMENT PARTS, FURNISH THE MODEL NUMBER(S) AND SERIAL NUMBER(S) OF YOUR TOOLS.

## Specifications

---

<b>Net Weight</b>	19 kg	42 lbs
<b>Length</b>	683 mm	25.125 in
<b>Bore</b>	44 mm	1.73 in
<b>Stroke</b>	146 mm	5.75 in
<b>Blows per minute</b>	900	900
<b>Chuck Sizes</b>	25 x 108 mm	1 x 4 1/4 in
<b>Air Inlet (NPT)</b>		1/2 in
<b>Air Consumption*</b>	1.6 m <sup>3</sup> /m	56 cfm

\*estimated

**WHEN ORDERING TOOLS  
SPECIFY CHUCK SIZE**

### **WARNING:**

**ALWAYS DISCONNECT THE AIR SUPPLY BEFORE CHANGING CHISELS OR DISMANTLING THE TOOL FOR SERVICE OR REPAIR. FOR MAXIMUM SAFETY WE ADVISE THE INSTALLATION OF A SHUT-OFF VALVE AT THE END OF THE AIR LINE.**