

# PAVEMENT BREAKER

30 lb. class

KT-PB30

---



WHEN ORDERING REPLACEMENT PARTS, FURNISH THE MODEL NUMBER(S) AND SERIAL NUMBER(S) OF YOUR TOOLS.

## Specifications

---

<b>Net Weight</b>	15 kg	34 lbs
<b>Length</b>	572 mm	22.5 in
<b>Bore</b>	44 mm	1.75 in
<b>Stroke</b>	86 mm	3.375 in
<b>Blows per minute</b>	1550	1550
<b>Chuck Sizes</b>	25 x 108 mm Rnd 22 x 83 mm Hex	1 x 4 1/4 in Rnd 7/8 x 3 1/4 in Hex
<b>Air Inlet (NPT)</b>	10 mm	3/8 in
<b>Air Consumption*</b>	1.4 m <sup>3</sup> /m	49 cfm

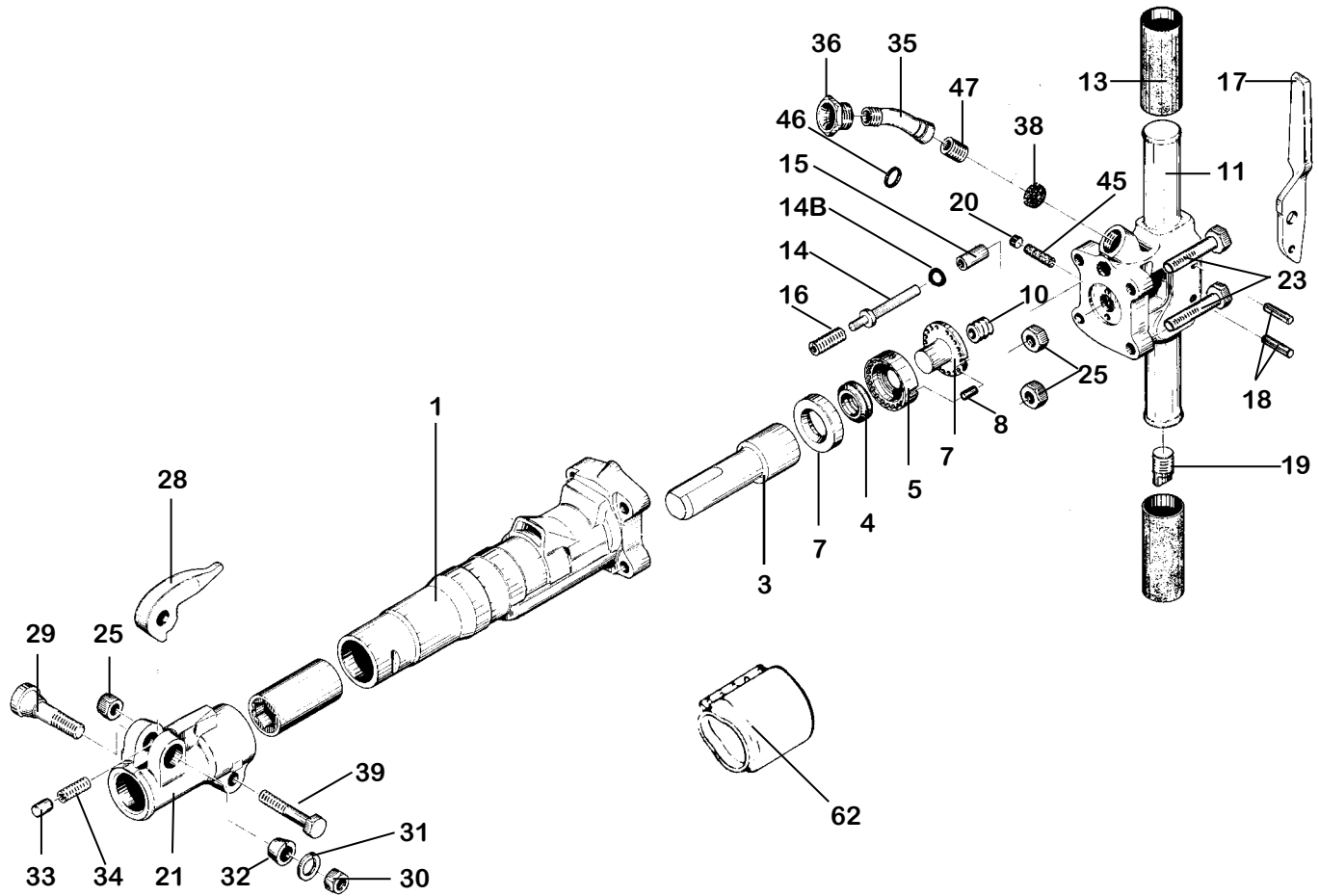
\*estimated

**WHEN ORDERING TOOLS  
SPECIFY CHUCK SIZE**

### **WARNING:**

**ALWAYS DISCONNECT THE AIR SUPPLY BEFORE CHANGING CHISELS OR DISMANTLING THE TOOL FOR SERVICE OR REPAIR. FOR MAXIMUM SAFETY WE ADVISE THE INSTALLATION OF A SHUT-OFF VALVE AT THE END OF THE AIR LINE.**

# PARTS LIST PAVEMENT BREAKER 30 lb class KT-PB30



INDEX	PART	DESCRIPTION	INDEX	PART	DESCRIPTION
1	KT6301	CYLINDER	NS	KT6321C	FRONTHEAD COMPLETE
3	KT6303	PISTON	23	KT6323	BACKHEAD BOLT (4)
4	KT6304	AUTOMATIC VALVE	24	KT6324	BOLT WASHER
5	KT6305	VALVE CHEST	25	KT6325	BOLT NUT (5)
6	KT6306	VALVE SEAT	28	KT6328	STEEL RETAINER (FORGED)
7	KT6307	VALVE GUIDE	29	KT6329	RETAINER BOLT
8	KT6308	VALVE DOWEL	30	KT6624	RETAINER BOLT LOCKWASHER
10	KT6310	BACKHEAD SPRING	31	KT6625	RETAINER BOLT NUT
11	KT6311	BACKHEAD (INCL.#6615)	32	KT6332	RETAINER BOLT BUSHING
12	KT6312	BACKHEAD O-RING (OPT.)	33	KT6333	RETAINER PLUNGER
NS	KT6311C	BACKHEAD COMPLETE	34	KT6334	RETAINER PLUNGER SPRING
13	KT6613	HANDLE GRIP (2)	35	KT6335	AIR INLET SWIVEL
14	KT6314	THROTTLE VALVE	36	KT6336	AIR INLET SWIVEL NUT
14B	KT6614B	THROTTLE VALVE O-RING	38	KT6338	AIR INLET SCREEN
16	KT6316	THROTTLE VALVE SPRING	39	KT6339	FRONTHEAD BOLT
17	KT6617	THROTTLE LEVER	NS	KT6517	MACHINING PLUG
18	KT6618	THROTTLE LEVER PIN	44	KT6344A	CHUCK BUSHING 1" x 4 1/4" HEX
19	KT6019	OIL PLUG		KT6344B	CHUCK BUSHING 7/8" x 1/4" HEX
20	KT6620	OIL CONTROL PLUG	45	KT6645	OIL CONTROL FELT
21	KT6321	FRONTHEAD	46	KT6346	INLET SWIVEL O-RING
			47	KT6347	INLET SWIVEL SPRING
			62	KT6362	MUFFLER