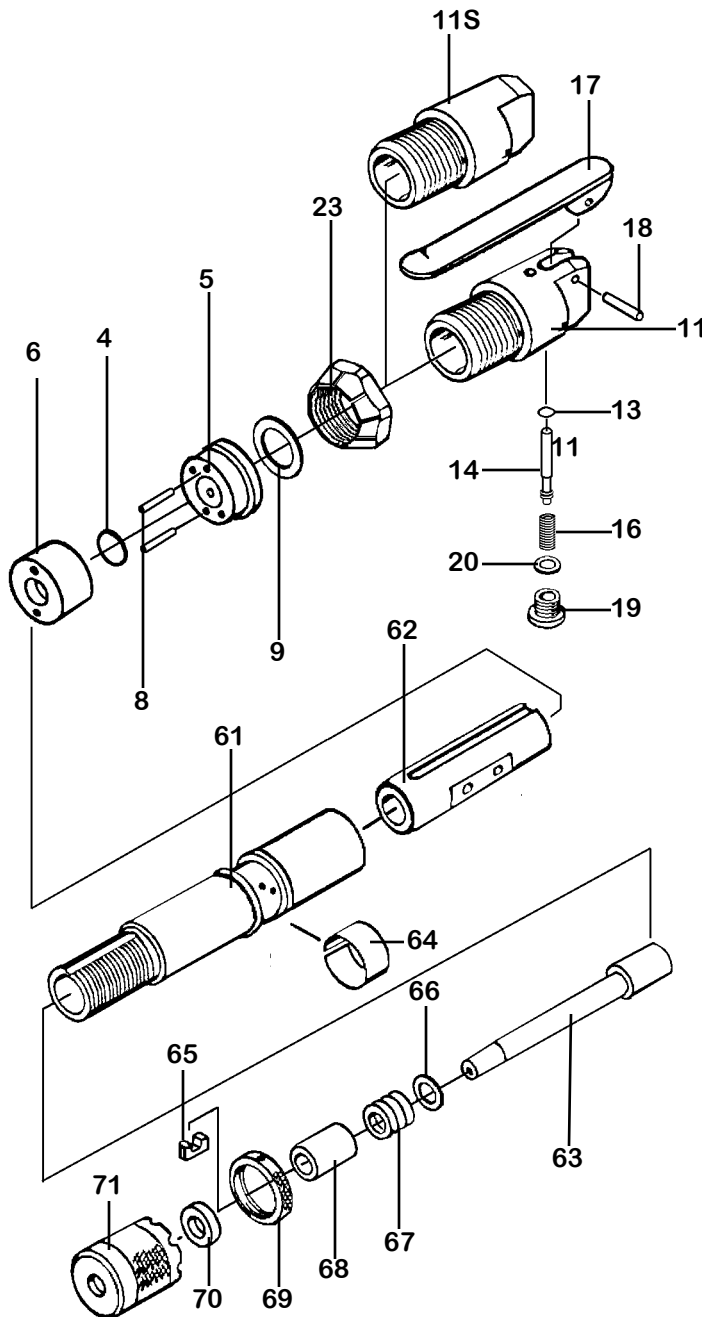


# BENCH RAMMER KT-OBR & KT-OBF

## PARTS LIST



INDEX	PART	DESCRIPTION
4	5004	VALVE
5	5005	VALVE SEAT UPPER
6	5006	VALVE SEAT LOWER
8	5008	VALVE DOWEL PIN (2)
9	5009	VALVE SHIM (OPT.)
11	5011	BACKHEAD
11S	5011S	BACKHEAD (EXTENSION HANDLE)
13	5013	"O"-RING
14	5014	THROTTLE VALVE
16	5016	THROTTLE VALVE SPRING
17	5017	THROTTLE LEVER
18	5018	THROTTLE LEVER PIN
19	5019	THROTTLE VALVE CAP
20	5020	THROTTLE VALVE CAP GASKET
23	5023	BACKHEAD LOCK RING
61	5061	BARREL
62	5062	BARREL SLEEVE
63	5063	PLUNGER (PISTON)
64	5064	EXHAUST DEFLECTOR
65	5065	KEY
66	5066	PACKING WASHER
67	5067	PACKING
68	5068	PACKING GLAND
69	5069	LOCK NUT
70	5070	PACKING GLAND SEAL
71	5071	PACKING GLAND NUT SEAL
NS	KT5072R1	RUBBER BUTT 66mm
NS	KT5072	RUBBER BUTT 76mm
NS	KT5072S	STEEL BUTT
NS	KT5072SA	SOLID ALUMINUM BUTT
NS	KT-XTH	EXTENSION PIPE/HANDLE KIT

# BENCH RAMMER 10 lb class KT-OBR & KT-OBF

---



WHEN ORDERING REPLACEMENT PARTS, FURNISH THE MODEL NUMBER(S) AND SERIAL NUMBER (S) OF YOUR TOOLS.

## Specifications KT-OBF

<b>Net Weight</b>	6.4 kg	14.12 lbs
<b>Length</b>	1041 mm	41 in
<b>Bore</b>	25 mm	1 in
<b>Stroke</b>	50 mm	2 in
<b>Blows per minute</b>	2500	2500
<b>Taper</b>	802	802
<b>Air Inlet (NPT)</b>	13 mm	1/2 in
<b>Air Consumption*</b>	.34 m <sup>3</sup> /m	12 cfm

Shown with KT-XTH extension pipe/ handle assy.

## Specifications KT-OBR

<b>Net Weight</b>	3.7 kg	8.12 lbs
<b>Length</b>	432 mm	17 in
<b>Bore</b>	25 mm	1 in
<b>Stroke</b>	50 mm	2 in
<b>Blows per minute</b>	2500	2500
<b>Taper</b>	802	802
<b>Air Inlet (NPT)</b>	13 mm	1/2 in
<b>Air Consumption*</b>	.34 m <sup>3</sup> /m	12 cfm

\*ESTIMATED

