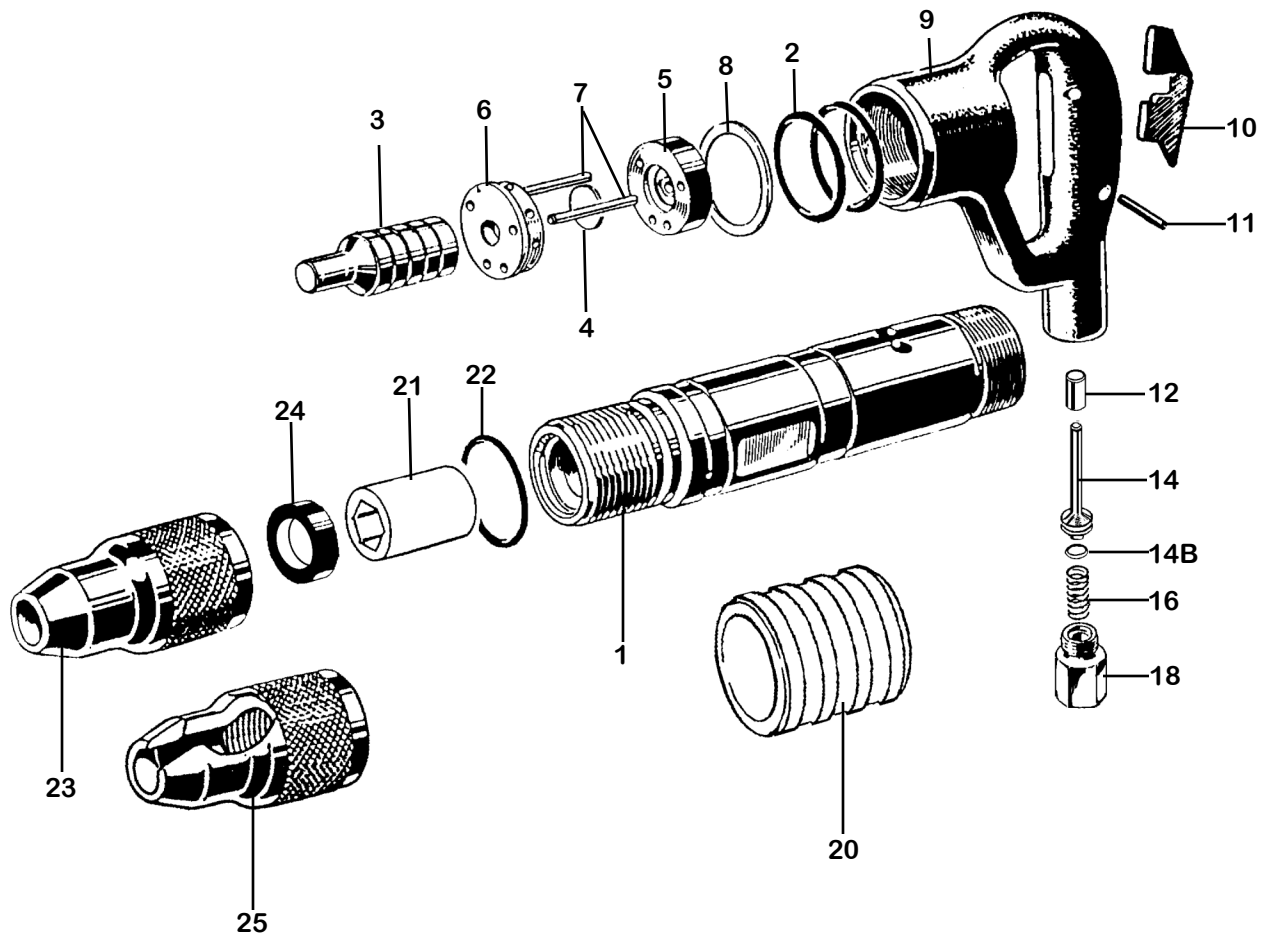




Specifications

Net Weight	9 kg	19 lbs
Length	470 mm	18.5 in
Bore	36 mm	1.418 in
Stroke	70 mm	2.75 in
Blows per minute	1560	1560
Chuck Sizes	25 x 75mm Rnd	1x 3 in Rnd
	22 x 83 mm Hex	7/8 x 3 1/4 in Hex
Air Inlet (NPT)	19 mm	3/4 in male
	22.2 mm	7/8 in female
Air Consumption*	1.2 m ³ /m	40 cfm

*estimated



INDEX	PART	DESCRIPTION	INDEX	PART	DESCRIPTION
1	KT6551	CYLINDER (SCREW TYPE)	21	KT6571H	CHUCK BUSHING 7/8" x 3 1/4" HEX
2	KT6552	CYLINDER "O" RING (2)	22	KT6572	RETAINER O-RING
3	KT6553	PISTON	23	KT6573	CLOSED RETAINER
4	KT6554	VALVE DISC	24	KT6574	RETAINER BUMPER RING
5	KT6555	VALVE PLATE UPPER	25	KT6575	OPEN RETAINER
6	KT6556	VALVE PLATE LOWER			
7	KT6557	DOWEL PIN (2)			
8	KT6558	PACKING RING (2)			
9	KT6559N	HANDLE BARE			
NS	KT6559NC	HANDLE COMPLETE			
10	KT6560	THROTTLE LEVER			
11	KT6176	THROTTLE LEVER PIN			
12	KT6581	THROTTLE VALVE BUSHING			
14	KT6564N	THROTTLE VALVE			
14B	KT6614B	THROTTLE VALVE O-RING			
16	KT6566	THROTTLE VALVE SPRING			
NS	KT6567	AIR INLET "O" RING			
18	KT6568N	AIR INLET 1/2" NPT			
20	KT6520	MUFFLER			