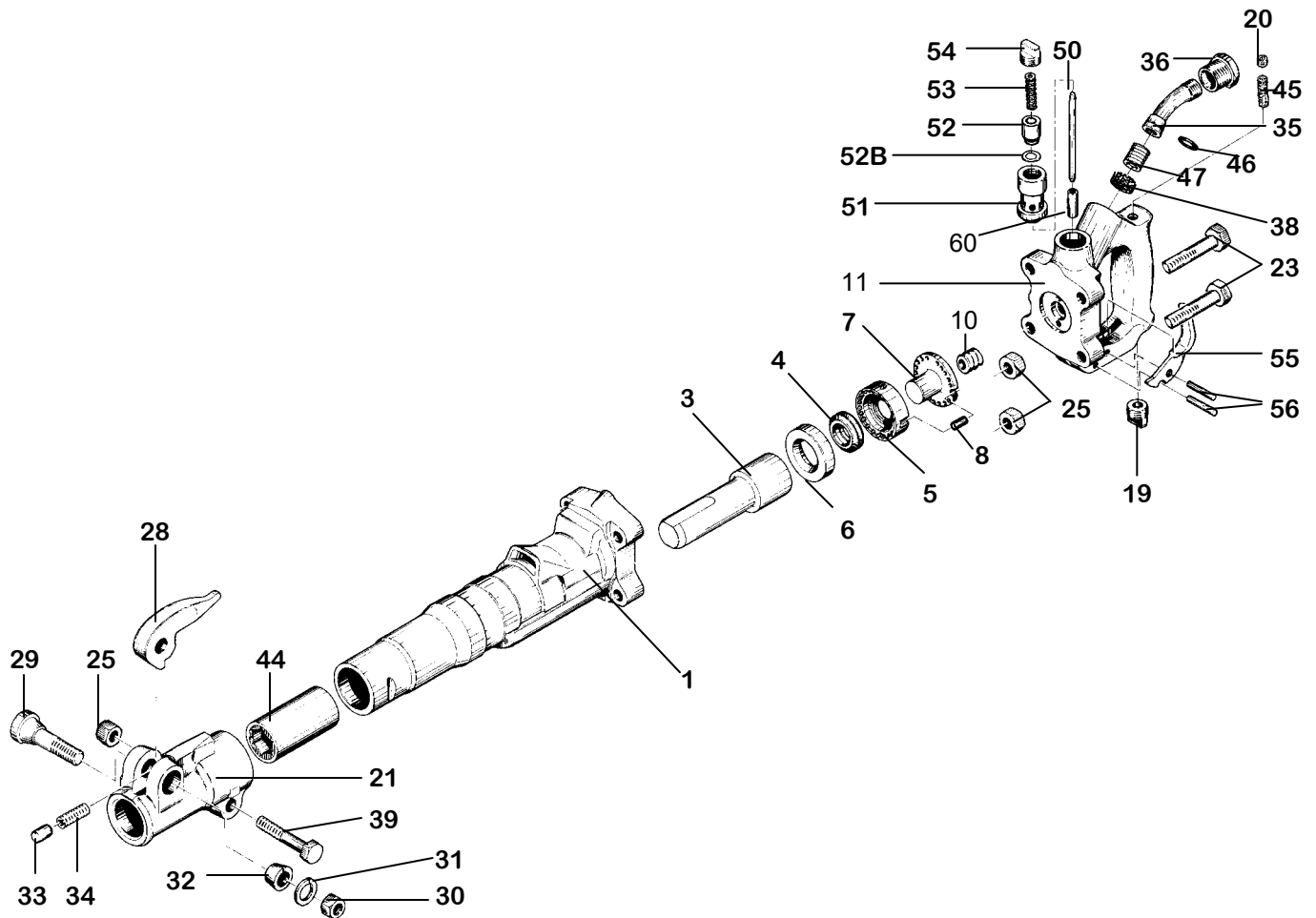


CLAY DIGGER

30lb class

KT-CD30



INDEX	PART	DESCRIPTION	INDEX	PART	DESCRIPTION
1	KT6301	CYLINDER	30	KT6625	RETAINER BOLT NUT
2	KT6302	CYLINDER PLUGS (3)(OPT.)	31	KT6624	RETAINER BOLT LOCK WASHER
3	KT6303	PISTON	32	KT6332	RETAINER BOLT BUSHING
4	KT6304	AUTOMATIC VALVE	33	KT6333	RETAINER PLUNGER
5	KT6305	VALVE CHEST	34	KT6334	PLUNGER SPRING
6	KT6306	VALVE SEAT	35	KT6335	AIR INLET SWIVEL
7	KT6307	VALVE GUIDE	36	KT6336	AIR INLET SWIVEL NUT
8	KT6308	VALVE DOWEL	38	KT6338	AIR INLET SCREEN
10	KT6310	BACKHEAD SPRING	39	KT6339	FRONTHEAD BOLT
11	KT6311D	BACKHEAD (INCL.#6360 & 6351)	44	KT6344A	CHUCK BUSHING 1 x 4 1/4
NS	KT6311DC	BACKHEAD COMPLETE	44	KT6344B	CHUCK BUSHING 7/8 x 3 1/4
12	KT6312D	BACKHEAD O-RING (OPT.)	45	KT6645	OIL CONTROL FELT
19	KT6019	OIL PLUG	46	KT6346	INLET SWIVEL O-RING
20	KT6620	OIL CONTROL PLUG	47	KT6347	INLET SWIVEL SPRING
21	KT6321	FRONTHEAD BARE	50	KT6350	THROTTLE VALVE PUSH PIN
NS	KT6321C	FRONTHEAD COMPLETE	51	KT6351	THROTTLE VALVE BUSHING
23	KT6323	BACKHEAD BOLT (4)	52	KT6352	THROTTLE VALVE
24	KT6324	BOLT WASHER	52B	KT6352B	THROTTLE VALVE O-RING
25	KT6325	BOLT NUT (5)	53	KT6767	THROTTLE VALVE SPRING
28	KT6328	STEEL RETAINER	54	KT6354	THROTTLE VALVE CAP
29	KT6329	RETAINER BOLT	55	KT6355	THROTTLE LEVER
60	KT6360	PUSH PIN BUSHING	56	KT6356	THROTTLE LEVER PIN

WHEN ORDERING TOOLS SPECIFY CHUCK SIZE

WHEN ORDERING REPLACEMENT PARTS,
FURNISH THE MODEL NUMBER(S) AND
SERIAL NUMBER(S) OF YOUR TOOLS.



Specifications

Net Weight	14 kg	30 lbs
Length	584 mm	23 in
Bore	44 mm	1.75 in
Stroke	86 mm	3.375 in
Blows per minute	1550	1550
Chuck Sizes	25 x 108 mm	1 x 4 1/4 in
	22 x 83 mm	7/8 x 3 1/4 in
Air Inlet (NPT)	10 mm	3/8 in
Air Consumption*	1.40 m ³ /m	49 cfm

*estimated

**FOR OPTIMUM PERFORMANCE, DO NOT OPERATE
TOOL ABOVE 90 PSI (6 BAR) WORKING PRESSURE.**

WARNING:

**ALWAYS DISCONNECT THE AIR SUPPLY BEFORE
CHANGING CHISELS OR DISMANTLING THE TOOL
FOR SERVICE OR REPAIR. FOR MAXIMUM SAFETY
WE ADVISE THE INSTALLATION OF A SHUT-OFF
VALVE AT THE END OF THE AIR LINE.**

**DO NOT EXCEED 100 PSI (7BAR) WORKING
PRESSURE.**