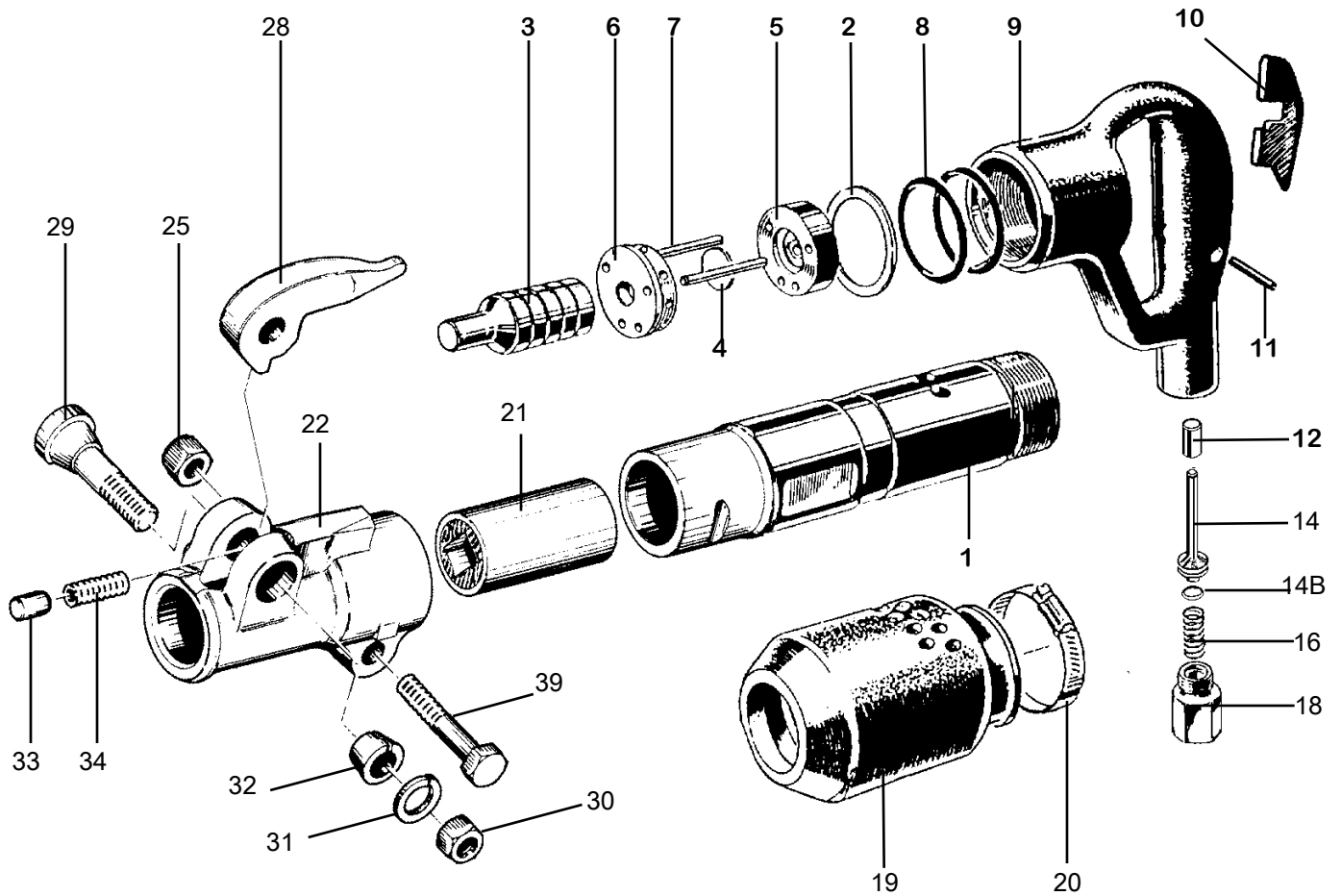


PARTS LIST CLAY DIGGER 20lb.class KT-CD20



1	KT6550	CYLINDER (LATCH TYPE RET.)	20	KT6570	MUFFLER CLAMP
2	KT6552	CYLINDER "O" RING (2)	21	KT6571H	CHUCK BUSHING 7/8" x 3 1/4" HEX
3	KT6553	PISTON	22	KT6321	FRONTHEAD BARE
4	KT6554	VALVE DISC	25	KT6325	FRONTHEAD BOLT NUT
5	KT6555	VALVE PLATE UPPER	28	KT6328	LATCH RETAINER (FORGED)
6	KT6556	VALVE PLATE LOWER	29	KT6329	RETAINER BOLT
7	KT6557	DOWEL PIN (2)	30	KT6625	RETAINER BOLT NUT
8	KT6558	PACKING RING (2)	31	KT6624	RETAINER BOLT LOCK WASHER
9	KT6559	HANDLE BARE	32	KT6332	RETAINER BOLT BUSHING
10	KT6560	THROTTLE LEVER	33	KT6333	RETAINER PLUNGER
11	KT6561	THROTTLE LEVER PIN	34	KT6334	RETAINER PLUNGER SPRING
12	KT6581	THROTTLE VALVE BUSHING	39	KT6339	FRONTHEAD BOLT
14	KT6564N	THROTTLE VALVE	NS	KT6321C	FRONTHEAD COMPLETE
15	KT6614B	THROTTLE VALVE O-RING			
16	KT6566	THROTTLE VALVE SPRING			
NS	KT6567	AIR INLET O-RING			
18	KT6568N	AIR INLET 1/2" NPT			
19	KT6569	EXHAUST MUFFLER CAP			

CLAY DIGGER (LATCH RETAINER) 20 lb. class KT- CD20

WHEN ORDERING REPLACEMENT PARTS, FURNISH THE MODEL NUMBER(S) AND SERIAL NUMBER(S) OF YOUR TOOLS.



Specifications

Net Weight	9 kg	19 lbs
Length	470 mm	18.5 in
Bore	36 mm	1.418 in
Stroke	70 mm	2.75 in
Blows per minute	1560	1560
Chuck Sizes	25 x 75mm Rnd	1x 3 in Rnd
	22 x 83 mm Hex	7/8 x 3 1/4 in Hex
Air Inlet (NPT)	19 mm	3/4 in male
	22.2 mm	7/8 in female
Air Consumption*	1.2 m ³ /m	40 cfm

*estimated

**WHEN ORDERING TOOLS
SPECIFY CHUCK SIZE**

WARNING:

ALWAYS DISCONNECT THE AIR SUPPLY BEFORE CHANGING CHISELS OR DISMANTLING THE TOOL FOR SERVICE OR REPAIR. FOR MAXIMUM SAFETY WE ADVISE THE INSTALLATION OF A SHUT-OFF VALVE AT THE END OF THE AIR LINE.