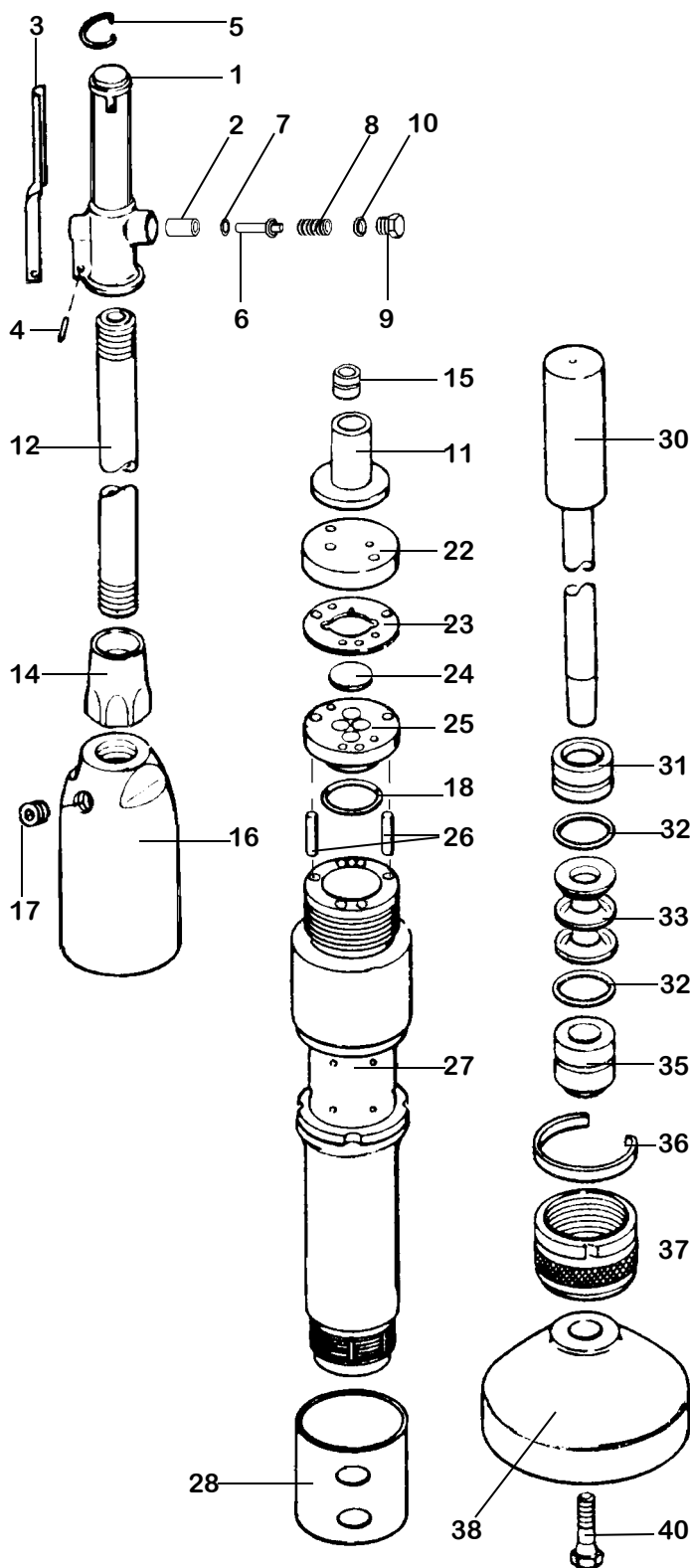


# PARTS LIST      BACK FILL TAMPER      40 lb class      KT- 6T



INDEX	PART	DESCRIPTION
NS	KT6500N	THROT. BODY COMPLETE)
1	KT6501N	THROT. BODY BARE
2	KT6502	THROTTLE VALVE BUSHING
3	KT6503	THROTTLE LEVER
4	KT6504	THROTTLE LEVER FULCRUM PIN
5	KT6505	THROTTLE LEVER LOCK CLIP
6	KT6506	THROTTLE VALVE
7	KT6507	THROTTLE VALVE O-RING
8	KT6508	THROTTLE VALVE SPRING
9	KT6509A	THROTTLE VALVE PLUG
10	KT6510	THROTTLE VALVE PLUG O-RING
11	KT6511	OIL RESERVOIR END CAP
12	KT6512	CONNECTING PIPE
13	KT6108	PUSH PIN (incl.#6507)
14	KT6514	CONNECTING PIPE NUT
15	KT6515	OIL CONTROL BUSHING
16	KT6516	BACKHEAD
NS	KT6516C	BACKHEAD ASSBLY.(#'s 11,15-17)
17	KT6517	OIL PLUG
18	KT6518	LOWER VALVE BLOCK O-RING
22	KT6522	UPPER VALVE BLOCK
23	KT6523	CENTER PLATE
24	KT6524	VALVE DISK
25	KT6525	LOWER VALVE BLOCK
26	KT6526	VALVE DOWEL PIN (2)
27	KT6527	BARREL
28	KT6528R	EXHAUST DEFLECTOR(RUBBER)
30	KT6530	PLUNGER
31	KT6531	UPPER GUIDE BUSHING
32	KT6532	GUIDE BUSHING O-RING (2)
33	KT6533	PLUNGER PACKING SET
35	KT6535	LOWER GUIDE BUSHING
36	KT6536	PACKING NUT LOCK CLIP
37	KT6537	PACKING NUT
38	KT6538	6" MALLEABLE IRON BUTT
NS	KT6538A3	3" ALUMINUM BUTT
NS	KT6538A4	4" ALUMINUM BUTT
NS	KT6539	POWER POLE BUTT
40	KT6540	CLAMP SCREW

# BACK FILL TAMPER 40 lb class KT-6T

---

WHEN ORDERING REPLACEMENT PARTS,  
FURNISH THE MODEL NUMBER(S) AND  
SERIAL NUMBER(S) OF YOUR TOOLS.



## Specifications

<b>Net Weight</b>	18 kg	40 lbs
<b>Length</b>	1226 mm	48.25 in
<b>Bore</b>	38 mm	1.5 in
<b>Stroke</b>	140 mm	5.5 in
<b>Blows per minute</b>	800	
<b>Taper</b>	804 taper	
<b>Air Inlet (NPT)</b>	13 mm	1/2 in
<b>Air Consumption*</b>	1.1 m <sup>3</sup> /m	38.5 cfm

\*estimated

**FOR OPTIMUM PERFORMANCE, DO NOT OPERATE  
TOOL ABOVE 90 PSI (6 BAR) WORKING PRESSURE.**

### **WARNING:**

**ALWAYS DISCONNECT THE AIR SUPPLY BEFORE  
CHANGING CHISELS OR DISMANTLING THE TOOL  
FOR SERVICE OR REPAIR. FOR MAXIMUM SAFETY  
WE ADVISE THE INSTALLATION OF A SHUT-OFF  
VALVE AT THE END OF THE AIR LINE.**

**DO NOT EXCEED 100 PSI (7BAR) WORKING  
PRESSURE.**