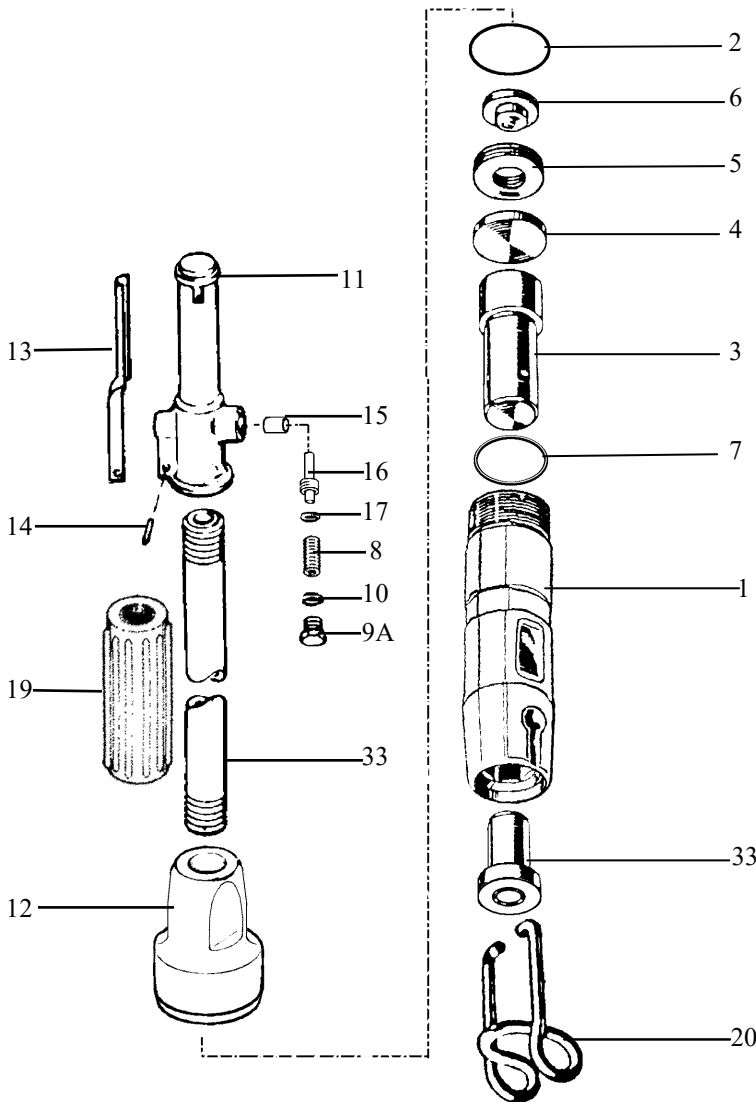


# KT-3S

## PARTS LIST



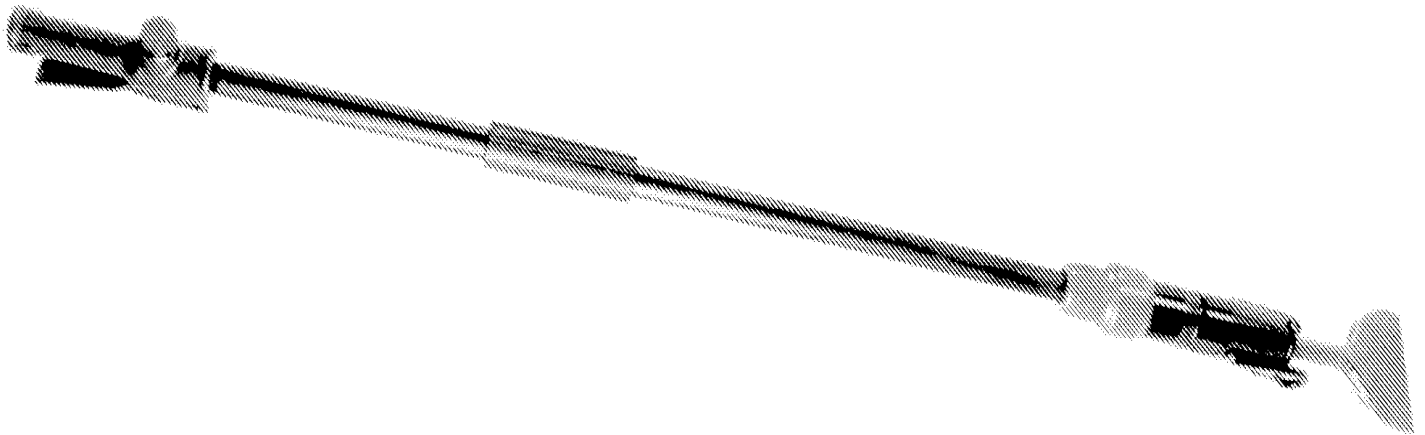
INDEX	PART	DESCRIPTION
1	KT6161H	CYLINDER w/ REPLACEABLE BUSHING (HEX .580")
2	KT6162	CYLINDER "O" -RING
3	KT6163	PISTON
4	KT6164	BUMPER VALVE PLATE
5	KT6165	VALVE SPRINGS (3)
6	KT6166	UPPER VALVE PLATE
7	KT6167	LOWER VALVE RING
11	KT6501N	THROTTLE BODY BARE
NS	KT6500C	THROTTLE BODY COMPLETE
12	KT6112	SOLID BACKHEAD
13	KT6503	THROTTLE LEVER
14	KT6504	LEVER FULCRUM PIN
15	KT6502	THROTTLE VALVE BUSHING
16	KT6506	THROTTLE VALVE
17	KT6507	THROTTLE VALVE O-RING
8	KT6508	THROTTLE VALVE SPRING
9A	KT6509A	THROTTLE VALVE PLUG
10	KT6510	THROTTLE PLUG O-RING
19	KT7614R	RUBBER GRIP
18	KT6178	CONNECTING PIPE (36")
20	KT6290	RETAINER SPRING
33	KT6193	CHISEL BUSHING HEX .580"
NS	KT6195	CHISEL BUSHING RND .680"

WHEN ORDERING TOOLS SPECIFY CHISEL BUSHING SIZE AND HANDLE PIPE LENGTH

**WARNING:**  
**ALWAYS DISCONNECT THE AIR SUPPLY** BEFORE CHANGING CHISELS OR DISMANTLING THE TOOL FOR SERVICE OR REPAIR. FOR MAXIMUM SAFETY WE ADVISE THE INSTALLATION OF A SHUT-OFF VALVE AT THE END OF THE AIR LINE.

# Heavy Duty Scraper KT-3S

---



## Specifications

---

<b>Net Weight</b>	<b>7.6kg</b>	<b>17lbs.</b>
<b>Length</b>	<b>135cm</b>	<b>53 in</b>
<b>Length w/ chisel</b>	<b>1.5 m</b>	<b>5 ft</b>
<b>Bore</b>	<b>37 mm</b>	<b>1.5 in</b>
<b>Stroke</b>	<b>37 mm</b>	<b>1.5 in</b>
<b>Blows per minute</b>	<b>3850</b>	<b>3850</b>
<b>Chuck Sizes</b>	<b>14.8mm Hex</b>	<b>.580 in</b>
	<b>Hex</b>	
	<b>17.5mmRnd</b>	<b>.680 in</b>
	<b>Rnd</b>	
<b>Air Inlet (NPT)</b>	<b>12mm</b>	<b>1/2 in</b>
<b>Air Consumption*</b>	<b>.34 m<sup>3</sup>/m</b>	<b>12 cfm</b>

\*estimated

---