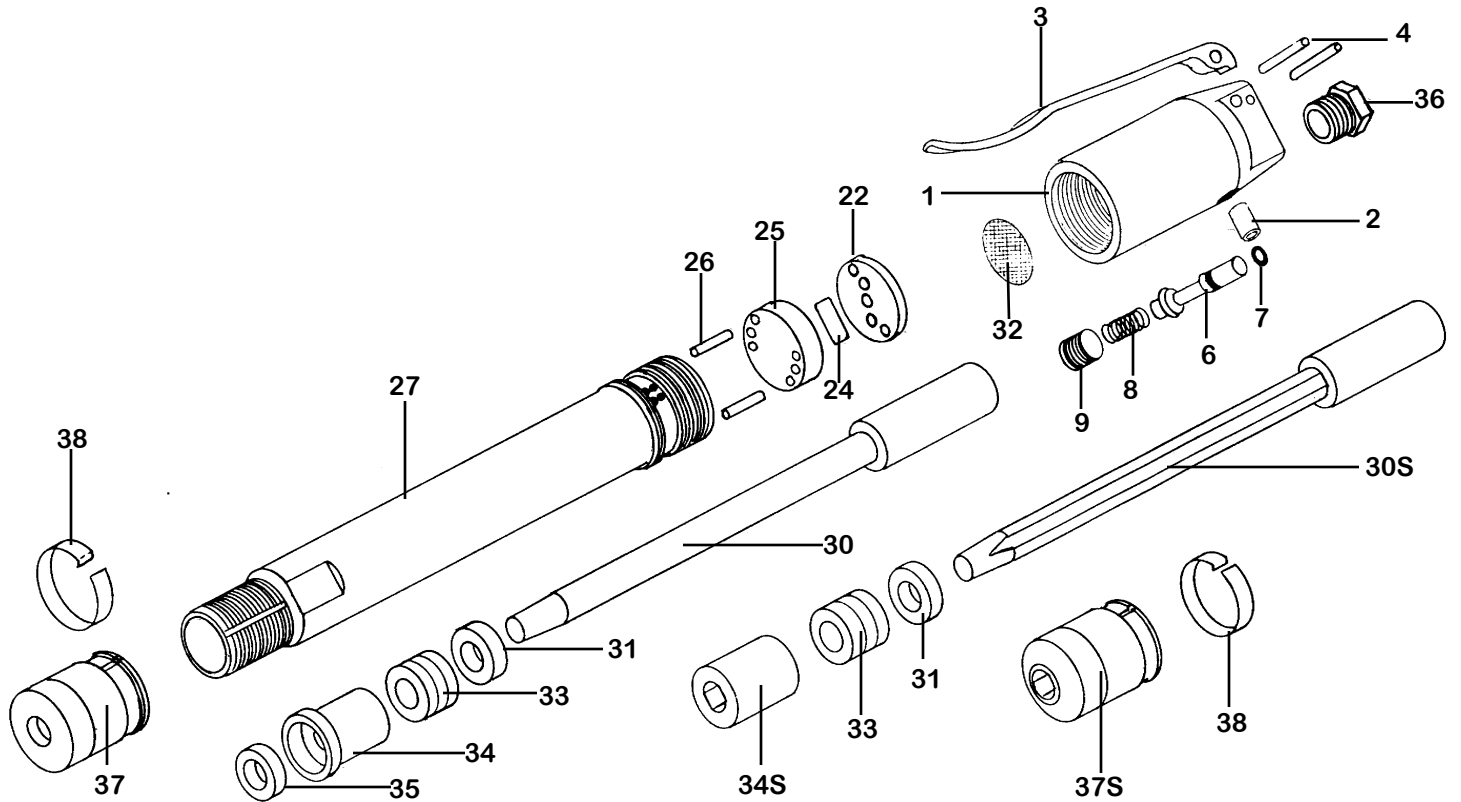


PARTS LIST BENCH & FLOOR RAMMER KT-2BAR & 2BAF



INDEX	PART	DESCRIPTION	INDEX	PART	DESCRIPTION
1	5111	BACKHEAD	34S	5134S	SQUARED GLAND
2	5112	THROTTLE VALVE BUSHING	35	5135	WIPER SEAL
3	5113	THROTTLE LEVER	36	5136	AIR INLET BUSHING
4	5114	THROTTLE LEVER PIN (2)	37	5137	PACKING NUT
6	5116	THROTTLE VALVE (incl. "O" RING)	37S	5137S	PACKING NUT
7	5117	THROTTLE VALVE "O" RING	38	5138	PACKING NUT LOCK CLIP
8	5118	THROTTLE VALVE SPRING	NS	5072R1	RUBBER BUTT 60mm
9	5119	THROTTLE VALVE SPRING PLUG	NS	5072	RUBBER BUTT 76mm
NS	5111S	SOLID BACKHEAD FOR KT-XTH KIT	NS	5072S	STEEL BUTT
22	5122	VALVE BLOCK UPPER	NS	5072SA	SOLID ALUMINUM BUTT
24	5124	VALVE	NS	KT-XTH	EXTENSION PIPE / HANDLE KIT
25	5125	VALVE BLOCK LOWER			
26	5126	VALVE DOWEL PIN (2)			
27	5127	CYLINDER			
28	6517	OIL PLUG			
30	5130	PISTON (PLUNGER)			
30S	5130S	SQUARED PISTON			
31	5131	PACKING GLAND WASHER			
32	5132	AIR SCREEN			
33	5133	PACKING			
34	5134	PACKING GLAND			



WHEN ORDERING REPLACEMENT PARTS, FURNISH THE MODEL NUMBER(S) AND SERIAL NUMBER(S) OF YOUR TOOLS.

Specifications

Net Weight	3.37 kg	7.4 lbs
Length	483 mm	19 in
Bore	25 mm	1 in
Stroke	101.5 mm	4 in
Blows per minute	1240	1240
Chuck Sizes	802 Taper	802 Taper
Air Inlet (NPT)	13 mm	1/2 in
Air Consumption*	.447 m ³ /m	15.8 cfm

Optional KT-XTH extension pipe/ handle assy.

*estimated

WARNING:

ALWAYS DISCONNECT THE AIR SUPPLY BEFORE CHANGING CHISELS OR DISMANTLING THE TOOL FOR SERVICE OR REPAIR. FOR MAXIMUM SAFETY WE ADVISE THE INSTALLATION OF A SHUT-OFF VALVE AT THE END OF THE AIR LINE.