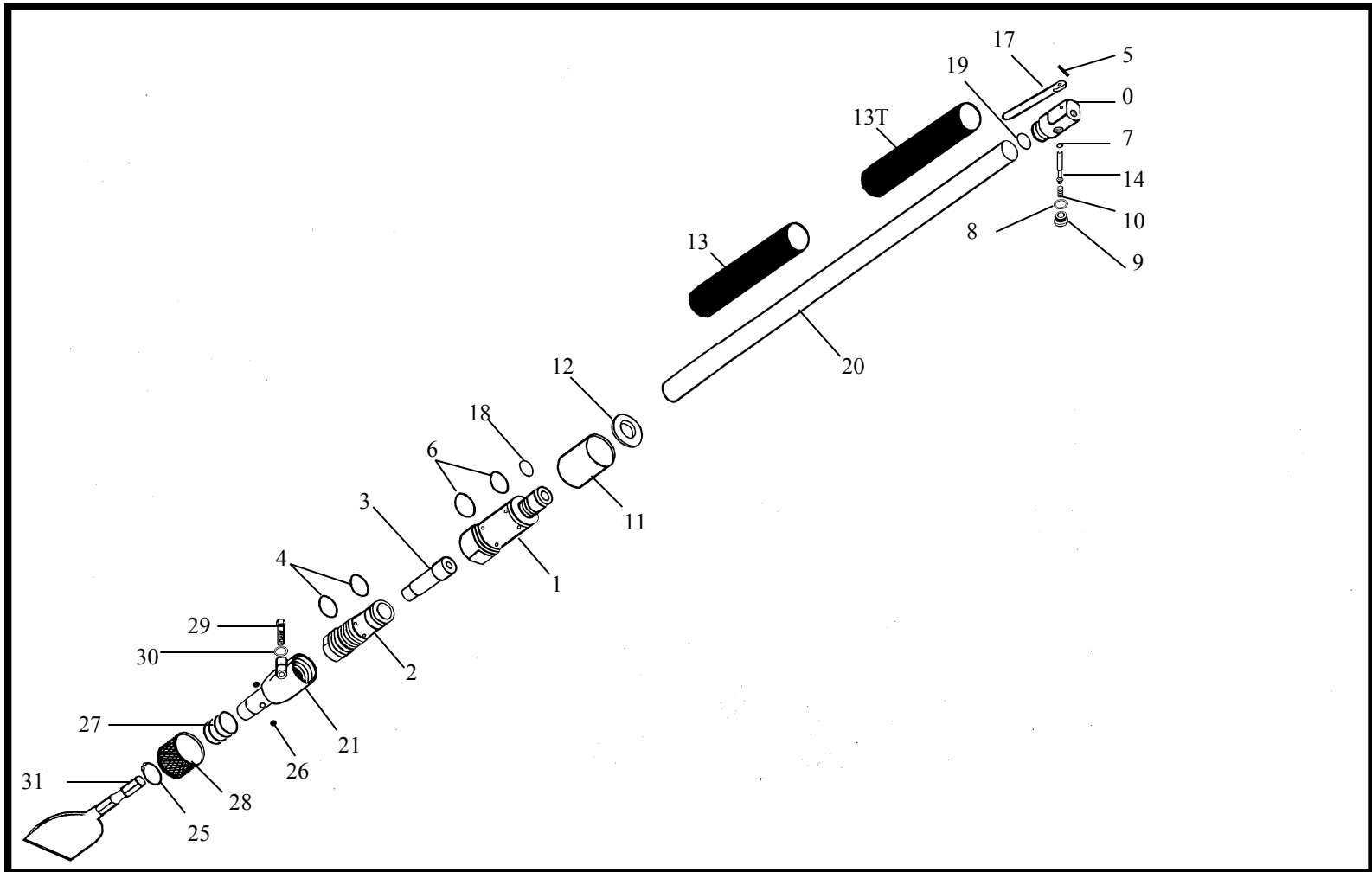


KT-1S FLOOR SCRAPER

14lb. CLASS



INDEX	PART	DESCRIPTION	INDEX	PART	DESCRIPTION
1	KT1001	CYLINDER	17	KT1017	THROTTLE LEVER
2	KT1002	CYLINDER SLEEVE	18	KT1018	CONNECTION O-RING (2)
3	KT1003	PISTON	19	KT1019	CONNECTING PIPE SHIM
4A	KT1004A	SLEEVE O-RING	20	KT1020	CONNECTING PIPE
4B	KT1004B	SLEEVE O-RING	21	KT1021	FRONT HEAD
5	KT1005	LEVER FULCRUM PIN	25	KT1025	RETAINING RING
6A	KT1006A	CYLINDER O-RING	26	KT1026	RETAINER BALL (2)
6B	KT1006B	CYLINDER O-RING	27	KT1027	RETAINER SPRING
7	KT1007	THROTTLE VALVE O-RING	28	KT1028	RETAINER
8	KT1008	THROTTLE VALVE SPRING	29	KT1029	FRONT HEAD BOLT
9	KT1009	THROTTLE PLUG	30	KT1030	FRONT HEAD BOLT WASHER
10	KT1010	THROTTLE PLUG O-RING	31	KT1031	4" CHISEL
14	KT1014	THROTTLE VALVE	NS	KT1032	4" YOKE
11	KT1011	EXHAUST SLEEVE	NS	KT1033	4" BLADE
12	KT1012	EXHAUST SLEEVE CAP	NS	KT1034	8" BLADE
13	KT1013	RUBBER GRIP	NS	KT1036	12" BLADE
13T	KT1013T	RUBBER THROTTLE GRIP	32	KT1032	THROTTLE BODY
			NS	KT1032C	THROTTLE BODY COMPLETE

FLOOR SCRAPER

14 lb. class

KT-1S



Specifications

Net Weight	KT-1S	7 kg	16 lbs.
Bore		30 mm	1.1875 in
Stroke		39 mm	1.501 in
Blows per minute		2500	
Chuck Sizes #		15 mm Hex	.590 in Hex
Air Inlet (NPT)		6 mm	1/4 in
Air Consumption*		.25 m ³ /m	9 cfm

#Tool is equipped with a 10 cm / 4 inch wide blade with a 15 mm / .590 inch hex - ball retainer shank .

*estimated

WARNING:

ALWAYS DISCONNECT THE AIR SUPPLY BEFORE CHANGING CHISELS OR DISMANTLING THE TOOL FOR SERVICE OR REPAIR. FOR MAXIMUM SAFETY WE ADVISE THE INSTALLATION OF A SHUT-OFF VALVE AT THE END OF THE AIR LINE.