

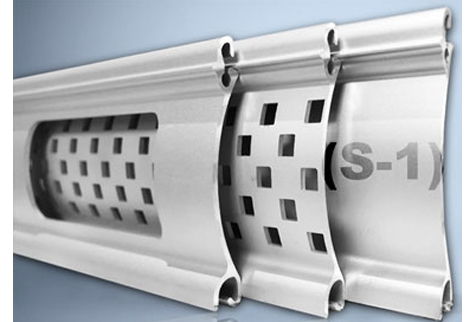


# SECURITY SHUTTER LTD.

## Extruded Aluminium Shutter - Technical Datasheet

S-1 Guard Roll Shutter System (Single Wall Extruded – End Retention)

The **S-1** series, is a commercial grade extruded aluminum 59mm slat profile. Available in solid, grid and rectangle punch design. It is suitable for applications with medium to larger size openings. Compatible only with tubular motor, gear assist or counterbalance spring operation type.



### Applications

Commercial openings, up to 120sq/ft (11m<sup>2</sup>). This system can be mounted internally or externally, with a face or reveal fit.

### Curtain Slat

Extruded aluminium.

**Standard Finish:** Silver anodized Type 6006-T5, Class1.

**Visible Face:** 59mm

**Weight per m<sup>2</sup>:** (Solid 7.9kg), (Grid 6.9kg), (Rectangle 6.4kg)

**Maximum Width:** 5800mm

**Maximum Height:** 5000mm

**Maximum Area:** 11m<sup>2</sup> (electric operation)  
3.5m<sup>2</sup> (manual operation)

### Enclosure

Roll formed aluminium enclosure with pressure-moulded aluminium end plates.

**Standard Finish:** Silver anodized Type 6006-T5, Class1.

Guide Height(mm):	Plate Size(mm):
1000	165
1220	180
1930	205
2870	230
4700	300

### Bottom Slat

Extruded aluminium bottom slat with rubber weather seal.

### Guide

Extruded aluminium guide rails with weather seal:

HTF – 53x22 mm

HTF-40 – 67x22 mm

V40-N – 67.5x25 mm

High Security End Retention – 76x28 mm

**Standard Finish:** Silver anodized Type 6006-T5, Class1.

### Operation

**Electric:** Tubular motor & internal or external momentary switch as standard. Remote control and Smartphone control available. Crank manual override & crank handle as required (surcharge applies). Numerous control option variants such as group, remote or mobile phone activation.

**Manual Gear Assist:** Geared rod and crank handle winds the shutter.

**Manual Counter-balanced Spring:** Spring operated assembly with a key-lock bottom slat & handles.

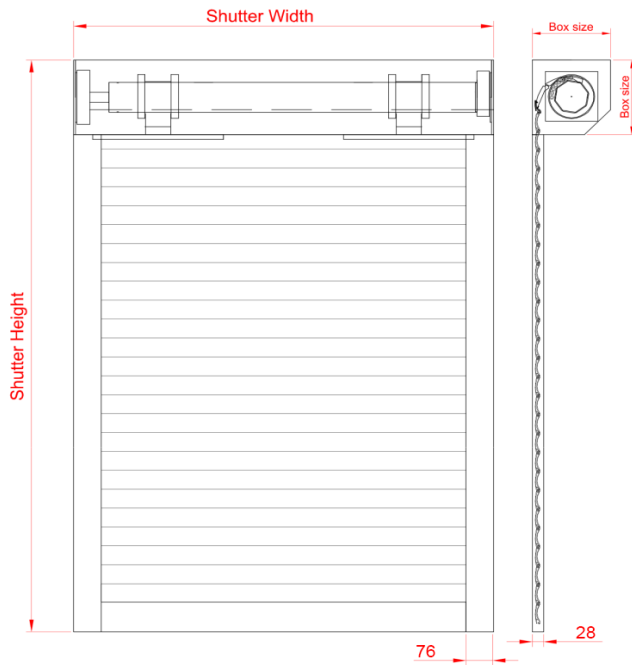


# SECURITY SHUTTER LTD.

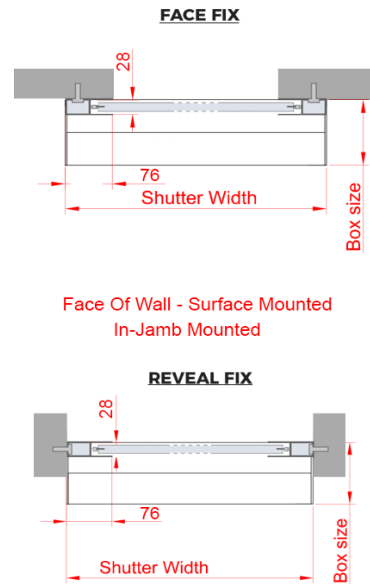
## Extruded Aluminium Shutter - Technical Datasheet

S-1 Guard Roll Shutter System (Single Wall Extruded – End Retention)

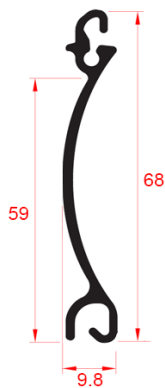
### Front Face



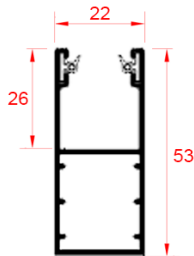
### Fixing Detail



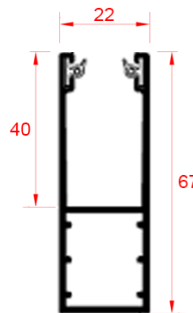
### Slat Profile



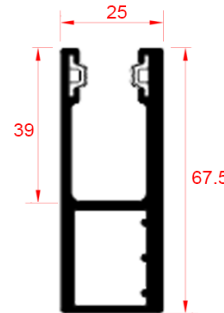
#### HTF



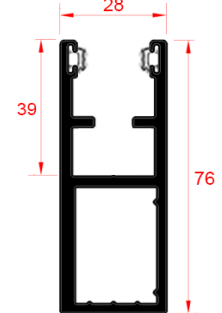
#### HTF-40



#### V40-N



#### END-RETENTION



### Guide Rails

### End Retention System

