

PPAN-24-C6-LC

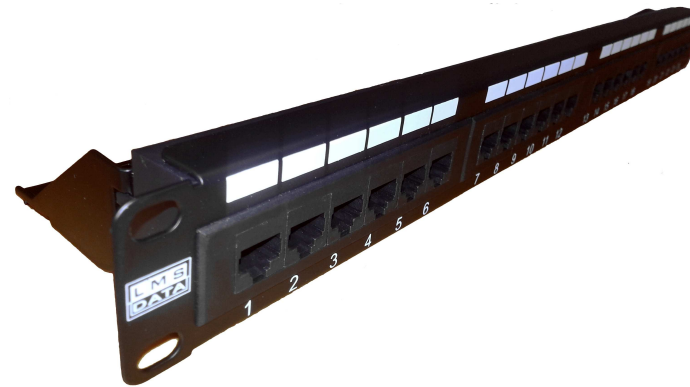
Cat6 24-way 110-type IDC UTP Patch Panel

Premier-class Category 6 Patch Panels without the premier pricing.

Offering all the performance of standardized Category 6 integration, the new LMS Data **PPAN-24-C6-LC** is your ideal choice for current and future networking protocols including Gigabit Ethernet (1000BaseT) and beyond.

Robust build-quality sets the **PPAN-24-C6-LC** apart from other vendor Category 6 panels as it offers a thick-gauge aluminium chassis, long-life and high-insertion UTP ports together with a superior electronic layout meaning reduced NEXT, ELFEXT and attenuation, even on longer distance Cat6 cable runs. Excellent SNR (signal-to-noise ratio) means increased test headroom and of course the patch panel excels even the latest Cat6 standards.

Using high-quality AT&T™ 110-type rear IDCs, fully colour-coded of course for TIA/EIA-568-A/B termination, together with rear-cable management bar means backbone cabling can be fully supported to the rear of the 110-type IDC, vital for high-density patch panel integration. Compact, 1U high and standard 19" wide fitment, the **PPAN-24-C6-LC** offers great value for money since it also comes with M6 cage nuts and bolts and cable-ties for securing cables to the rear cable management bar.



Featuring...

Unshielded (UTP) Cat6 Patch Panel for performance networking

Class-leading Category 6 compliance standards

Supports Gigabit (1000BaseTX) and other networking speeds

TIA-EIA-568A or B, AT&T™ 110 only punch down IDC blocks

1U high, robust aluminium chassis with port numbering

Removable rear cable management bar

Ideal for both wall and free-standing enclosures

Supplied with tool-less clips, M6 cage nuts and bolts and ties



Further product details available from www.LMSDATA.com

© 2013 LMS Data
Details correct at going to Press. E&OE
All Trademarks Acknowledged.