

P/N: CAM-C90

The CAM-C90 WIFI CCTV IP 1080HD Wireless Camera with Motion detection and Recording ability remotely or Standalone with a Micro SD memory Slot (Up to 128G)

The CAM-C90 is easy to install, and it can work either as a standalone CCTV camera or as a wireless IP CCTV camera with 1080 HD quality image quality. The camera's design means it can be discreetly placed in a room and can connect directly or via the WIFI LAN and monitor access through the cloud application.

The CAM-C90 view can be adjusted using either the rotating bracket which will allow you to turn the camera targeting the viewing area required. or just simply stick it on a wall or using a magnetic sticker to put on a refrigerator or any metal surface.

The camera's sleek design, with measurements of 10 cm diameter which allows the operator to place it where ever he wants in room without it being noticeable.

The CAM-C90 camera has a two way microphone which enables the user to remotely to speak to anyone in the room where the camera is situated, and also has a internal speaker so that the remote user can hear sound.

The camera is easy to install and will connect either to a smart phone or a computer via the cloud software . The remote user will be able to monitor the camera from anywhere in the world.

The camera's activity can be saved via the cloud software on your notebook or if used as a standalone camera can be stored on a SD memory card.



SPECIFICATIONS:

Resolution: 4K/2K/1080P/720P

Number of frames: 25

Video format: ASF

WIFI Compatibility: 11g/11n

Perspective: 150 degrees

Motion Detection: 6 meters straight

Minimum illumination: 1LUX

Continuous recording: Over 1 hour

Compression format: H.264

Recording range: 5m²

Power consumption: 240MA/3.7V

stored temperature: -20-80 degrees Celsius

Operating temperature: -10-60 degrees Celsius

Operating humidity: 15-85%RH

Memory card type: TF card (up to 128G)

Mobile operating system: Android/loS

Quick Guide for Watching

- **Software installation & download and install APP for smart phones**

IOS

Search "V380" in the AppStore
install app.

Android

Search "V380" in Google play
install app.

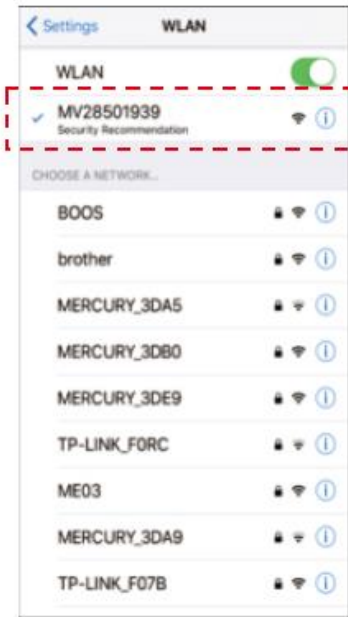


Toscan

Download the client

- **How to use the AP hotspot connection device:**

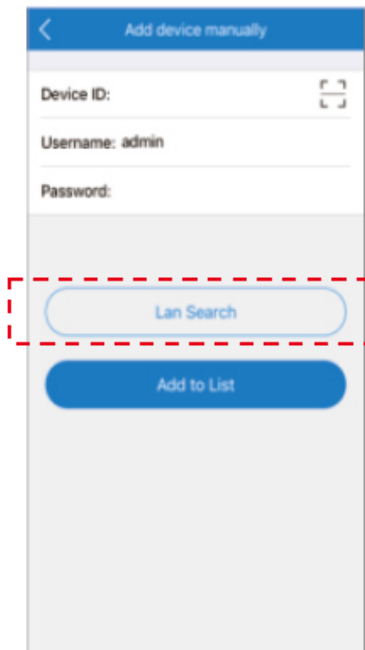
1. When hot build successful, open the mobile wireless Network Settings.
2. Find hot begin with MV, click on the links.



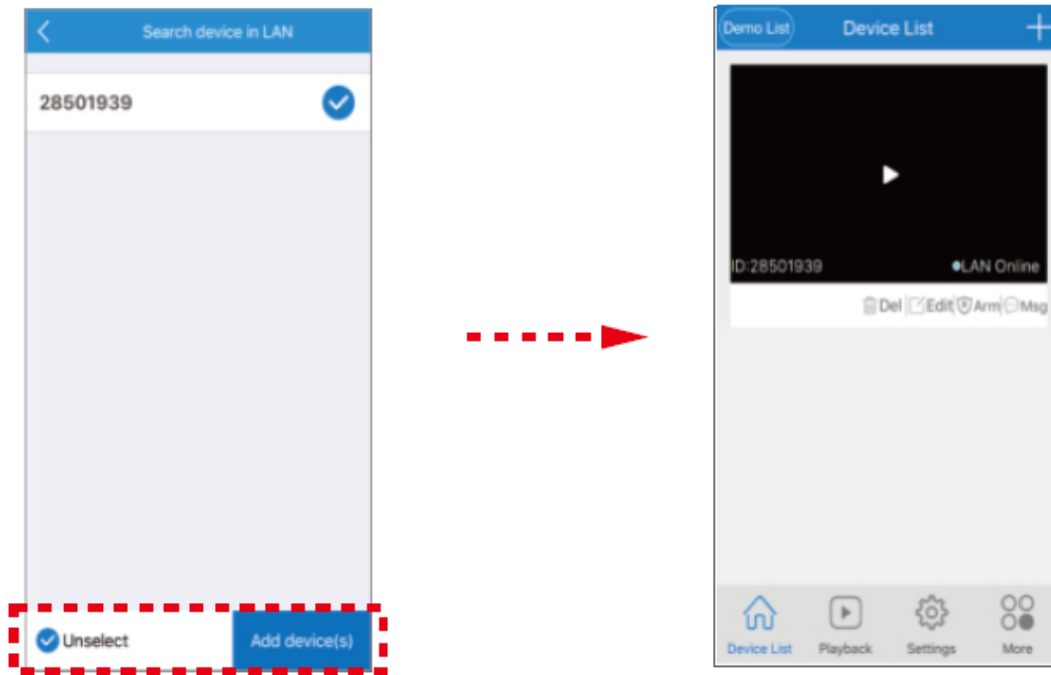
Open WLAN on your mobile phone and connect to device hotspot. Open mobile APP, click "Device Linked"



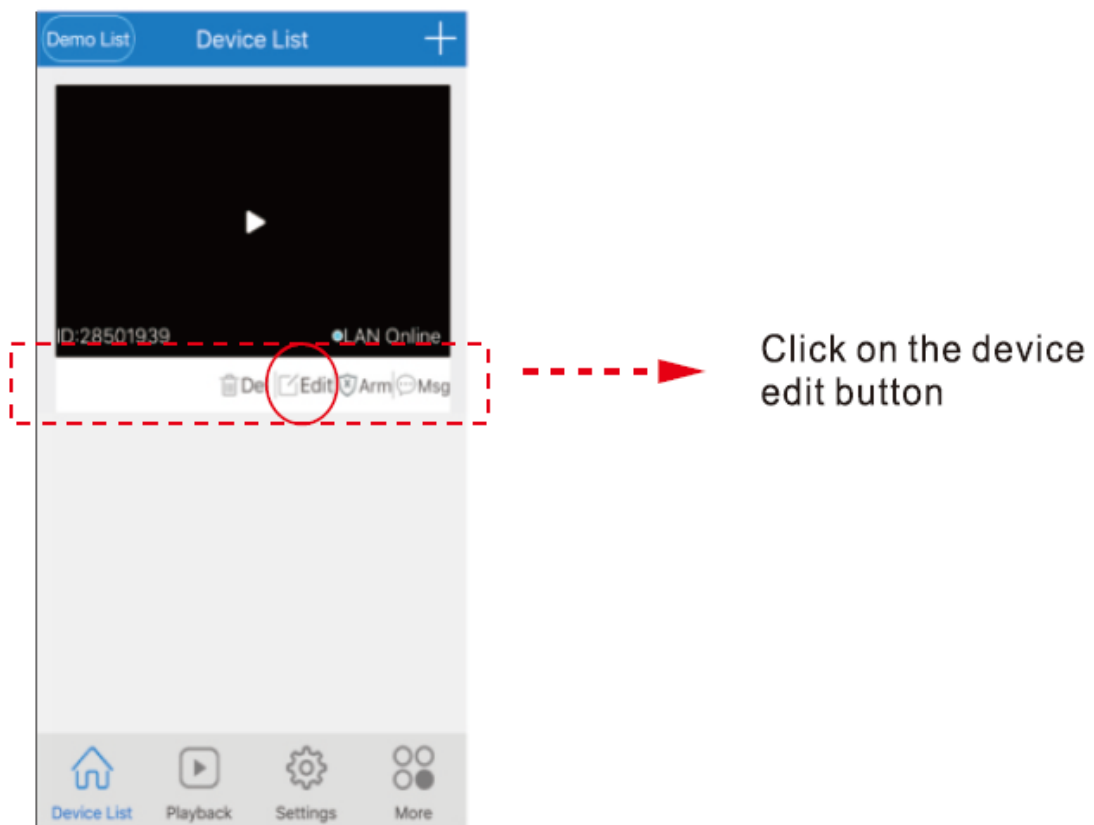
The hot configuration mode need to use the local landing mode

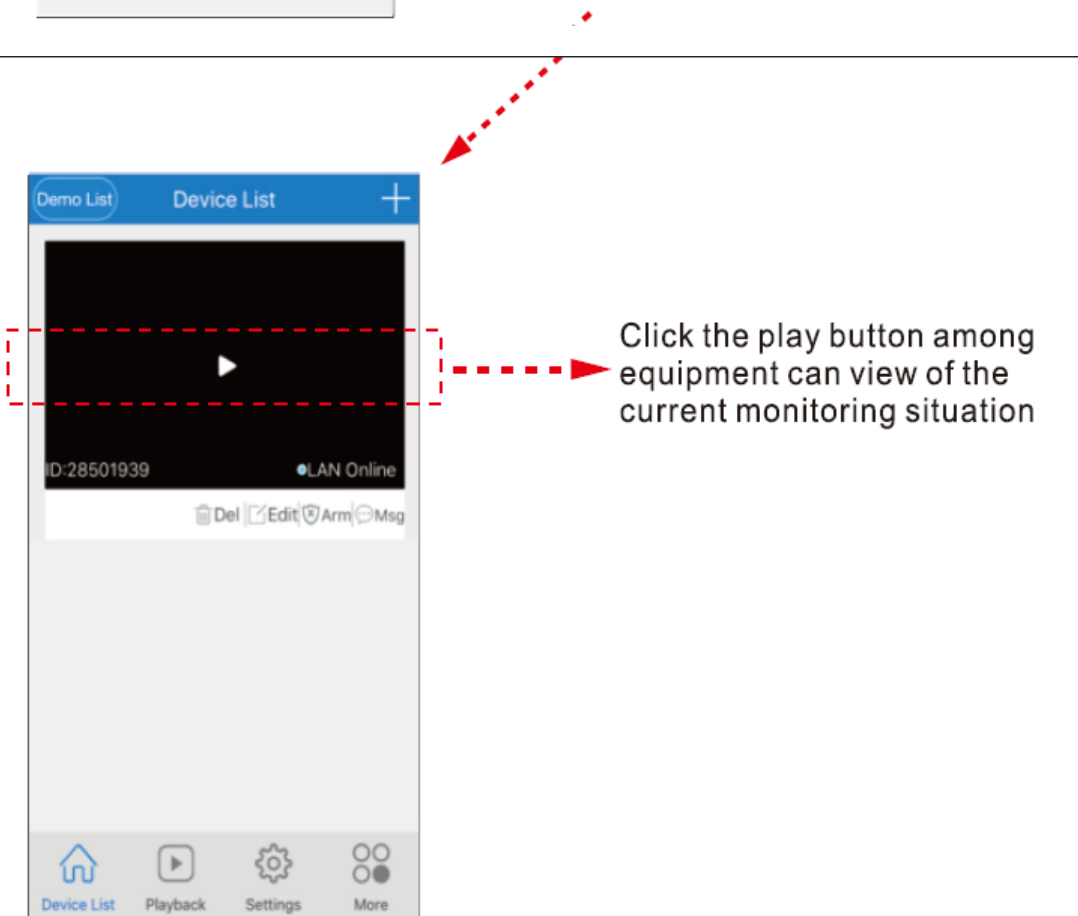
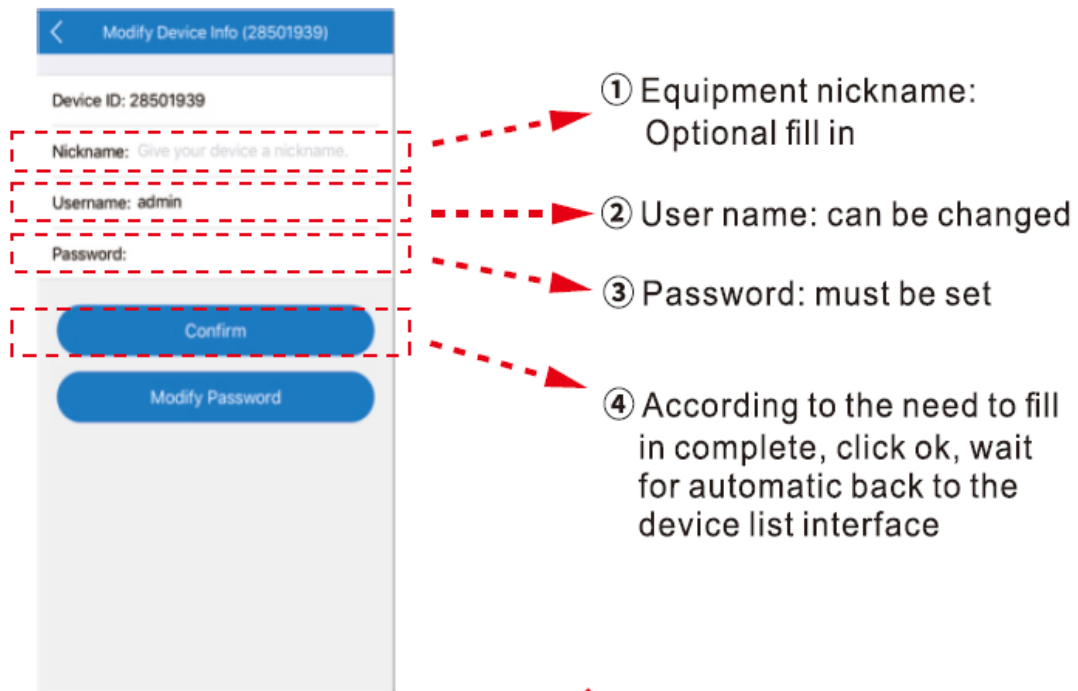


Click "LAN Search" and when the result appears, please click "add selected device" to make it shows on your device list.



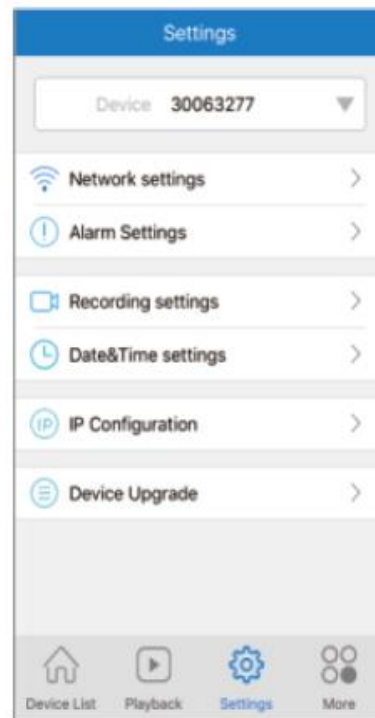
- Security and password





● Device settings

After choosing device, you can configure it. The introduction to various functions is as follows



① Network setting:

AP mode and station mode can be interchanged;

AP mode: Set the Camera work as independent

Access Point(Hotpot), (The wifi Camera work as a

WiFi Access Point, the previous 'MV', ex, "MV31000000")

Station mode: Set the Camera work as wifi station, the

camera will connect the WiFi router you selected, and you

can access your camera by internet

② Record Setting:

automatic record: continuous recording;

record-on-alarm: record with alarm event;

audio record: record the sound;

record resolution:

standard-definition(VGA),

high-definition(720P)(choose high-definition record, with

big record les and short storage time in memory card)

③Alarm & Prompt:

disarm switch: Close or Open the alarm;

voice master switch: master switch for all voice prompts;

alarm voice prompts: switch for movement alarm voice;

voice language: enable the voice prompts .

④Date & Time: able to adjust time of device;

⑤User Management: able to modify the username and

password of camera;

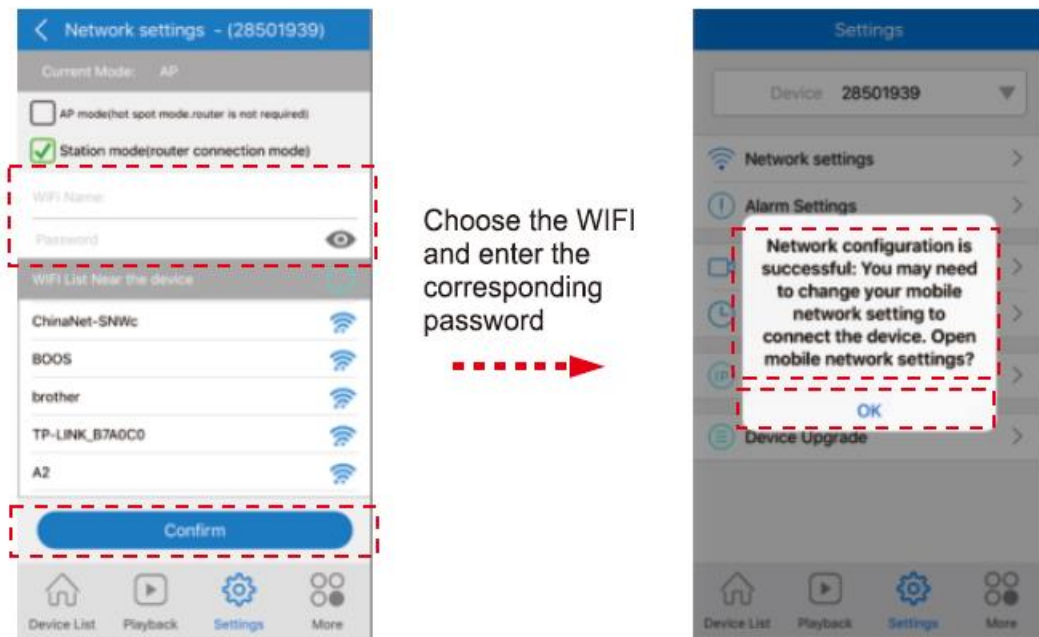
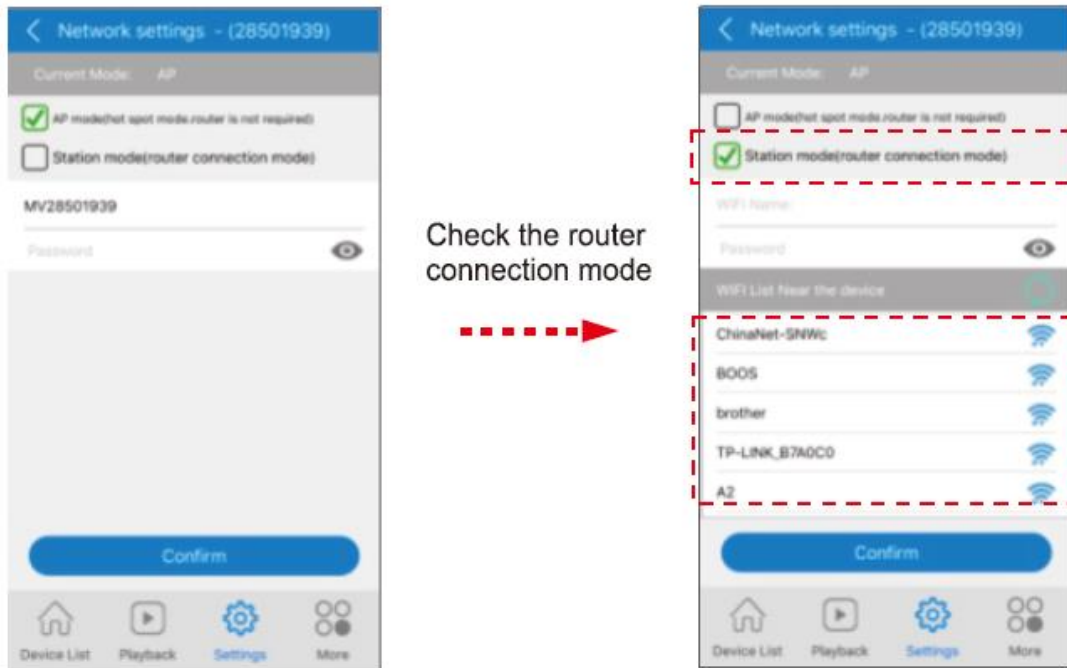
⑥Static IP configuration: Equipment can be static

IP is set to manual configuration or automatic configuration;

⑦Version information: able to obtain information of

device system and hardware;

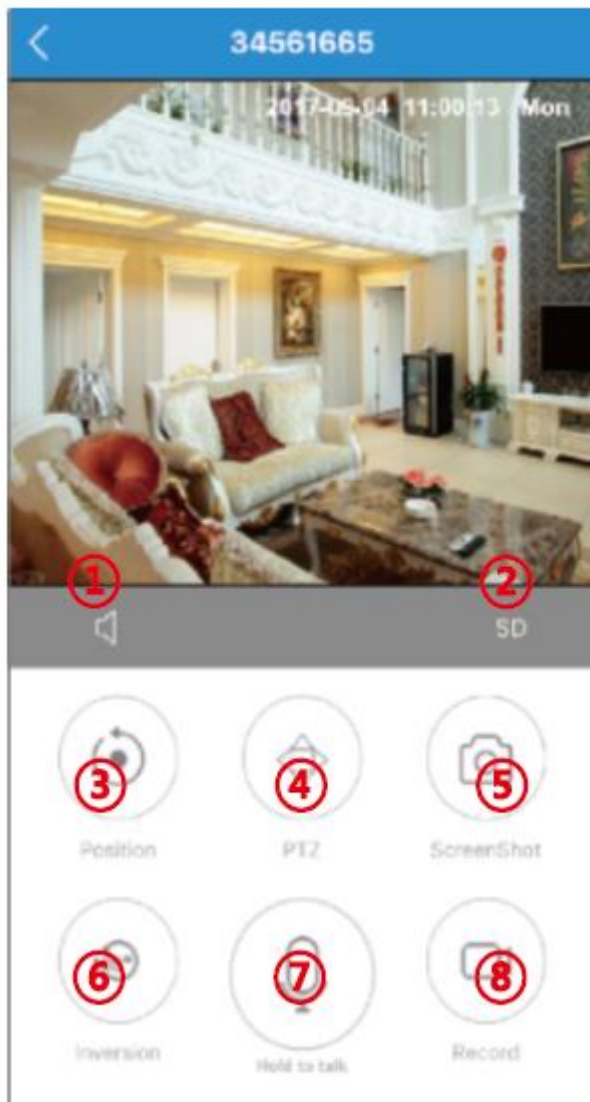
- Switch WIFI mode



Equipment voice prompt
WIFI connection,
click OK



- Device control



1 Voice Switch

2 Clarity

3 Preset Management

4 PTZ Control

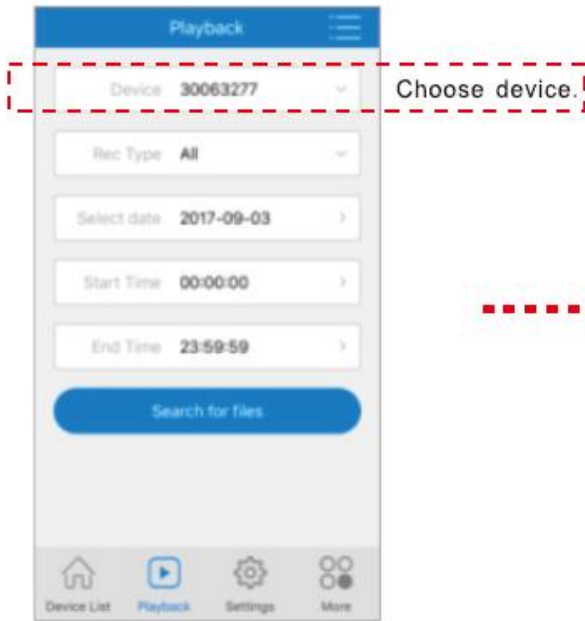
5 Screenshot

6 Image Inversion

7 Voice Intercom

8 Video Switch

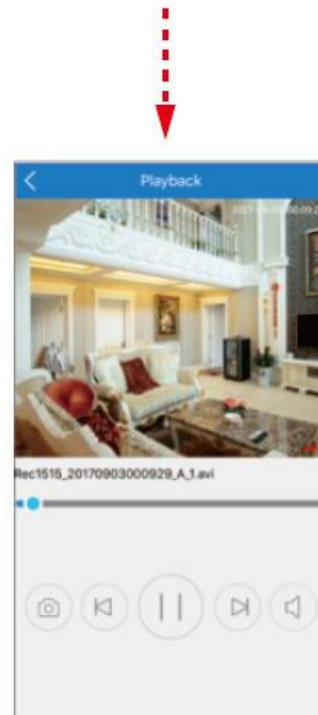
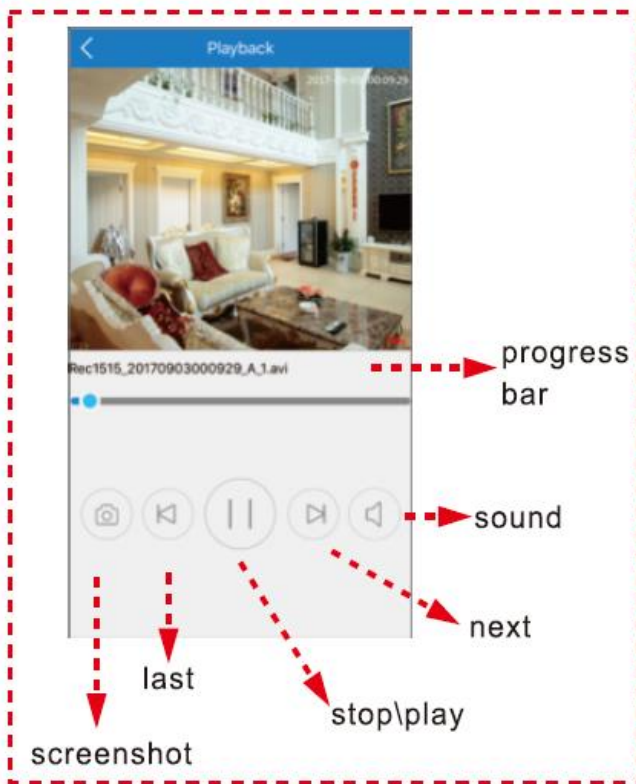
- Video playback



Search the record files

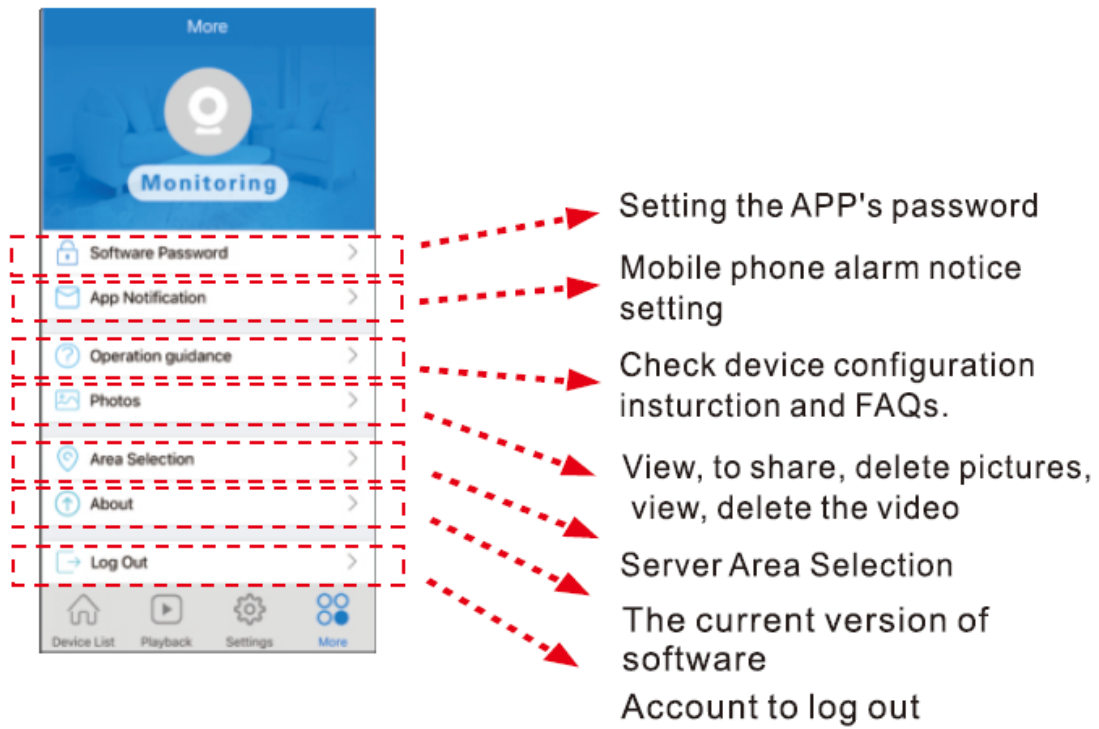


The record files

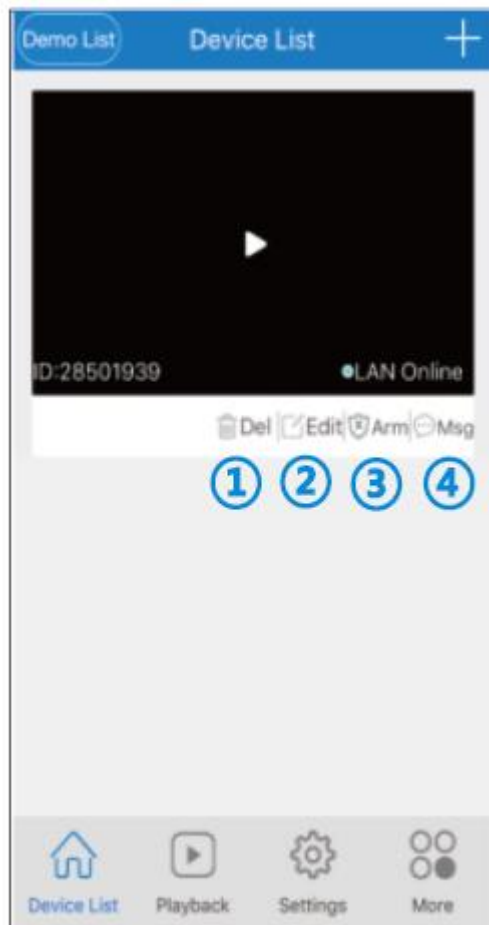


record playback

- More functions



- **Modify and delete**



- ② Delete: able to delete one device entry individually
- ③ Edit: able to modify ID number, username and password of the device (if you enter error username and password, you can modify it here directly, rather than adding another device entry)
- ④ Arm: Protection, removal of equipment can be
- ⑤ Msgs: playback the snap picute
- ⑥ Long press the device ID to proceed bulk deletions.(On the android mobile phones do not support this operation)