

# C-PB6 Cat6 Patch Cables

Supporting the next generation CAT6 systems

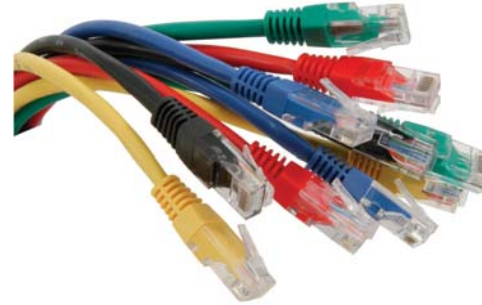
## Insist on the finest in CAT6 patching for your network.

Category 6 networks are fundamentally different in many ways to existing Cat5e networks, in both performance and quality of the high-speed data supplied on the network. I

The new range of the *MegaLAN C-PB6* patch cables from LMS Data is your ideal choice for your new or existing CAT6 network. Further enhanced to support the extended frequencies expected by the CAT6 standards in NEXT, ELFEXT and SNR allows for a much improved data quality even when pushing the future boundaries of your network.

Ideal for current Gigabit Ethernet, future multi-Gigabit and of course multimedia networks such as VoIP and Broadcasting, the new generation of LMS Data *MegaLAN C-PB6* patch cables are robust in design, but still maintain excellent flexibility in the data cabinet. Coupled with a robust strain-relief boot, a choice of colours and lengths ranging from 0.5m, up to 30m, you can be sure LMS Data has the perfect patch cable partner for your CAT6 network.

*Image for illustrative purposes only. Specifications and design subject to change without prior notice. E&OE.*



### Technical Data

**Type:** UTP 24 AWG 4-pair, 568-B colour coding, PVC jacket

**Performance:** CAT6 and legacy compliance protocols assured. Enhanced NEXT and ELFEXT with extended frequency criteria  
PoE compliant

**Standards:** ISO/IEC-11801, ETA/TIA-568B, CE Verified and RoHS standards

**Conductor:** Stranded copper with max. 3 Ohms contact resistance with central plastic cross-member

**Insulation (Outer):** PVC with choice of colours: Black, Blue, Green, Grey, Purple, Red, Pink, Yellow

**Insulation (Inner):** HDPE insulate connected to standard RJ-45 UTP plug, half boot, injection moulded

**Lengths available:** 0.5, 1.0m, 1.5m, 2.0m, 3.0m, 5.0m, 10.0m, 15.0m, 20.0m, 25.0m, 30.0m

© 2012 LMS Data  
Details correct at going to Press.  
All Trademarks Acknowledged.

