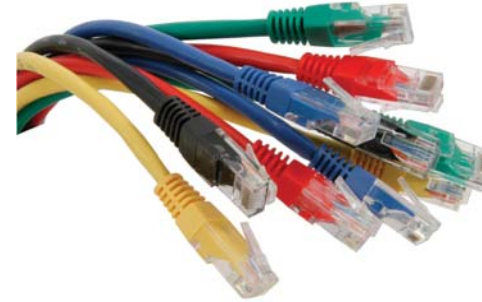


# C-PB5E Cat5e Patch Cables

Quality with performance CAT5e Patching



## Now the best is even more affordable.

Are you looking for a price competitive but high-quality patch solution for your newly installed or legacy network? Do you need a patch cable that you can trust to work without compromise, no matter how many re-insertions you are putting the patch cable through?

The new range of the *SuperLAN C-PB5E* patch cables from LMS Data is your ideal choice. Fully compliant with the latest CAT5e recommendations and of course fully able to support current and emerging networking standards such as Gigabit Ethernet and PoE devices. Excellent SNR ratios are achieved by way of a much improved manufacturing process when compared with other vendor solutions, together with quality copper throughout the insulated 8-cores.

Robust design is coupled with a RJ-45 strain relief boot. With a choice of colours for your particular installation environment and an improved range of cable lengths from 0.3m up to 30m, the new LMS Data *SuperLAN C-PB5E* range of cables is your ideal choice.

*Image for illustrative purposes only. Specifications and design subject to change without prior notice. E&OE.*

### Technical Data

**Type:** UTP 26 AWG 4-pair, 568-B colour coding, PVC jacket

**Performance:** CAT5e (enhanced) and legacy compliance protocols assured. PoE compliant

**Standards:** ISO/IEC-11801, ETA/TIA-568B, CE Verified and RoHS standards

**Conductor:** Stranded copper with max. 3 Ohms contact resistance

**Insulation (Outer):** PVC with choice of colours: Black, Blue Green, Grey, Purple, Red, Pink, Yellow

**Insulation (Inner):** HDPE insulate connected to standard RJ-45 UTP plug, half boot, injection moulded

**Lengths available:** 0.3m, 0.5, 1.0m, 1.5m, 2.0m, 3.0m, 5.0m 10.0m, 15.0m, 20.0m, 25.0m, 30.0m

© 2012 LMS Data  
Details correct at going to Press.  
All Trademarks Acknowledged.

