

MegaLAN CAT6 LS0H Cable

Gigabit Compliant 23AWG 4-Pair LS0H solid in EasyPull Dispenser

C-CABLE-C6-LS0H-300-UTP

MegaLAN from LMS Data offers your current and future data, video and voice applications complete assurance with bandwidth demands to Category 6 standards and beyond.

Available in both LS0H violet and PVC options, *MegaLAN* CAT6 is a fully cross-compliant Category 6, 4-Pair 23AWG (American wire gauge) solid core with improved NEXT, ELFEXT and SNR (Signal-to-noise Ratio) together with improved cable construction to exceed current Category 6 standards such as the adaptive central cross-member, increased AWG annealed copper and correct twist-ratio of the 4-Pairs. All bound in a low OD flexible out sheath.

Fully Gigabit (1000BaseT), ATM622 and backward Fast Ethernet Compliant, *MegaLAN* from LMS Data comes in standard 305 metre (1000ft) reverse metre-marked EasyPull™ snag-free dispensing hard wearing boxes.

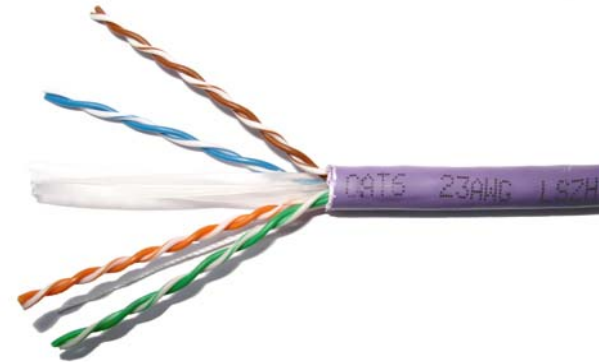
Available now at competitive pricing from Netbit (UK) Limited, the leading LMS Data authorised distributor

Netbit

DISTRIBUTION

Order Online www.NETBIT.biz

0845-375 2128



Technical Data

Type: UTP 23AWG x 4 solid Pair with LS0H metre marked sheath

Performance: CAT6, CAT5E (enhanced) 1000BaseT (Gigabit)
ATM-622 Compliant, 10/100BaseT Compliant

Standards: ISO/IEC-11801, ETA/TIA-568B, UL Approved
EC Verified, RoHS Standard, international approvals

Conductor Resistance/Insulation: $\leq 8.2\Omega/100$ metres/5000M Ω Km

Conductor: Soft annealed bare copper, 1/0.57 composition,
central cross-member for correct pair separation

Insulation (Outer): **LS0H violet sheath** (PVC optional), Rip Cord,
Nominal wall thickness of sheath 0.55mm

Conductors: white/blue, white/orange
white/green, white/brown, 0.23mm thickness

Cable Dispensing: *EasyPull* 305m (1000ft) box design, reverse
metre marked on cable, snag-free design



Order online now at www.netbit.biz