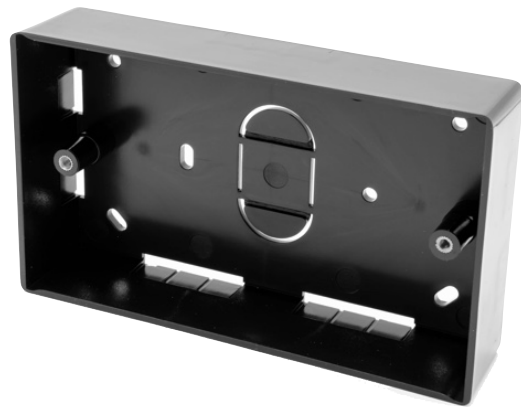


BB-DOUBLE-32-BLK

High-Gloss
Double Gang
Black Back Box



Quality Structured Cabling Solutions



Public Sector
& Education



VoIP or LAN
Applications



Residential
LAN



Data Centres
& Government

Quality High Gloss Back Box Series

Looking to install a high-contrast, quality ABS plastic back box for your LMS Data or compatible, high-contrast faceplates?

The LMS Data series of high-gloss black back boxes are ideal for the new DDA (disability discrimination act) criteria that needs increased visual appearance of data and electrical appliance points.

Featuring a quality, high-gloss black, multiple punch out points for data cable entry and alloy threaded screw holes, compatible of course with the LMS Data faceplates.

Standard 32mm depth which is ideal for up to x4 Cat5e or Cat6 cable entries and it comes complete with slotted screw holes for accurate wall alignment.

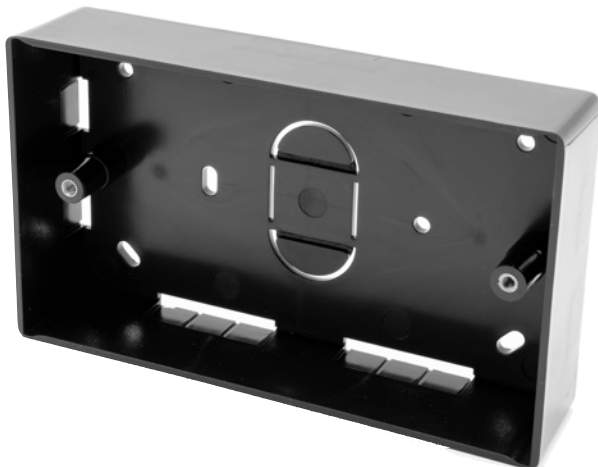
specifications:

High-Contrast DDA (disability discrimination act) faceplate

Quality black High Gloss ABS plastic - Double Gang Design

Multiple knock-out plastic hole inserts - alloy screw threads

Dimensions: 147(W)mm X 86mm(H) X 32mm(D) approx.



Copyright 2019 LMS Data
All trademarks acknowledged E&OE.
Details subject to change. V1.0