



ISLAND ARMOR FUEL PUMP ISLAND RENOVATION SYSTEM



ORIGINAL CONDITION OF ISLAND

The ISLAND ARMOR system and application procedure is a simple step by step process that can be done by your maintenance crew or our nationwide contractor network. Below is the key detailed installation steps required to insure a quality and successful application.

SURFACE PREPARATION PROCESS



STEP 1 GRIND LOOSE PAINT AND RUSTY METAL WITH AN ABRASIVE GRINDING DISK.

RUST CONDITIONING AND PRIMING METAL CURB



STEP 2 SOLVENT WIPE CONCRETE AND METAL CURB. THEN WIPE METAL WITH A METAL CLEANER / RUST CONVERTOR.



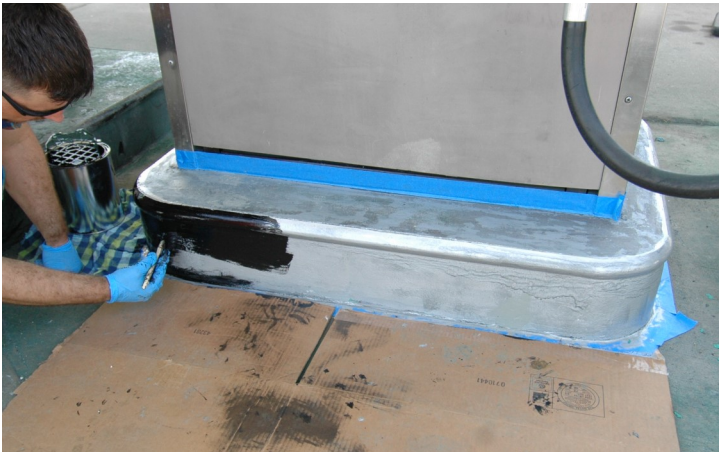
STEP 3B REINFORCE THE TYPICAL RUSTY AREA WITH MORE RUST ARMOR PRIMER—THE TOP PERIMETER OF METAL CURB AND THE BOTTOM OF METAL CURB.

ADDRESSING CRACKS AND DEFECTS IN TOP CONCRETE AND SIDE CURB WITH EPOXY PATCH



STEP 4—USING A 3 MINUTE EPOXY—ISLAND ARMOR PATCH, FILL IN ANY DEFECTS AND ANY DEPRESSIONS / CRACKS IN THE CONCRETE AND ANY VOIDS IN THE METAL CURB DUE TO CORROSION / RUSTING.

FINAL PAINTING PROCESS AND CAULKING



STEP 5— TAPE OFF THE GAS DISPENSER AND THE CONCRETE DECK AROUND THE PERIMETER OF THE CURB.

STEP 6— BRUSH ON ISLAND ARMOR 2800 SMOOTH OVER THE SIDES OF THE PRIMED METAL CURB.

STEP 7— ADD A TEXTURE POWDER INTO THE ISLAND ARMOR 2800 AND USED THIS TEXTURED COATING FOR THE TOP OF THE ISLAND. USE AN APPROVED SOLVENT RESISTANT ROLLER TO APPLY OVER THE TOP OF THE ISLAND DECK. (SEE SEPARATE INSTRUCTIONS FOR ADDING TEXTURE)

STEP 8—CAULK AROUND THE BOTTOM PERIMETER WITH OUR GASS RESISTANT CAULK.



ISLAND ARMOR SYSTEM

FINISHED PICTURES

