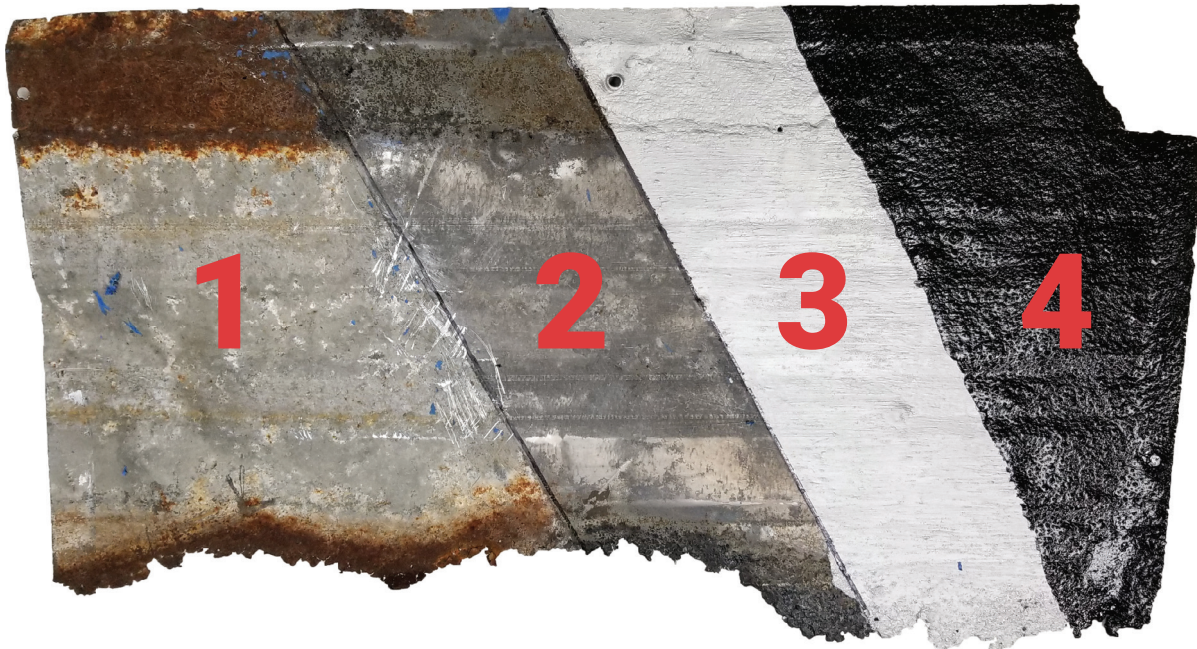




# How Our System Works



## How to properly address rusty metal:

### Typical Rusty Metal Substrate

**Step 1:** Condition the metal with our Rust Converter RX

**Step 2:** Prime with our aluminized polyurethane penetrating and encapsulating primer

**Step 4:** Topcoat with high performance polyurethane system for the ultimate stain resistant, chemical resistant and weather resistant system.