

GOTRAX

TRAVELER

ELECTRIC BIKE

USER MANUAL





Congratulations on your purchase!

This user manual will help you assemble and operate your new electric bike. Be sure to read **ALL OF THE INFORMATION** in this manual before riding.

NOTE TO ALL RIDERS UNDER 18 YEARS OF AGE: It's very important that you get parental permission before riding your electric bike.





Don't Ride Until You Read This:



ALWAYS wear a helmet when riding your electric bike.



Make sure your electric bike has a **full battery** before taking it out to ride.



Always be aware of local road laws, and follow them.



Do not ride the bike under the influence of drugs or alcohol.



Always respect pedestrians.



Do not ride under wet conditions. The electric bike may slide from under your feet causing injury. Wet conditions may damage the electronics and void the warranty.



Warning Message

1. **Avoid water** - The electric bike is not waterproof. The electronics may be damaged due to water and water damage is not covered by our warranty. Riding in wet conditions is also very dangerous and may result in injury.
2. **Avoid prolonged exposure** to sun or rain and avoid storage in places with high temperatures or corrosive gas.
3. **Abuse** - We do not cover physical damage due to negligent care and extreme riding.
4. **Whenever you ride** the **GOTRAX** Electric Bike, you risk severe injury or even death from loss of control, collisions, and falls. Use caution and ride at your own risk.
5. **Do not modify** the product from the manufacturers original design.
6. **Do not exceed** the posted speed limit and obey all traffic laws.
7. **Avoid touching** the charging port directly and do not let it make contact with a metal object.
8. **Keep hands and all body parts away** from moving parts while operating the electric bike.
9. **Before riding** - be sure to check the electric bike over and make sure the electric bike is operating correctly before each use.
10. **Before riding** - be sure to check that the braking system is functioning properly; also be sure to check that all safety labels are in place and you understand the safety warnings.
11. **Before riding** - be sure that any and all axle guards, chain guards, or other covers or guards supplied by the manufacturer are in place and in serviceable condition.
12. **Before riding** - be sure to check that the tires are in good condition, inflated properly, and have sufficient tread remaining.

13. **Never exceed** the 264 lb (120 kg) maximum load rating.
14. **The electric bike should never** be used by children under the age of 16.
15. **Maximum Speed** - Your electric bike goes the maximum speed of 20MPH.
16. **Make note that additional insurance may be required** to cover situations you encounter while riding an electric bike. It is recommended that you contact an insurance company or broker for advice and consultation.
17. **To conserve electricity**, use assist mode and avoid zero starting, frequent braking, driving against the wind, carrying heavy loads including other people and riding with insufficient air pressure.



Unpacking and Product Specs

Remove all packaging material, then inspect each item for any accidental damage that may have occurred during shipping. You should find each of these items in your box:



ELECTRIC BIKE



TOOLS: (1) LARGE WRENCH, (3) ALLEN WRENCHES, (1) SCREWDRIVER



BATTERY CHARGER

ITEM	SPECIFICATIONS
Model	TRAVELER
Product Dimensions	185x65x114 (cm)
Package Dimensions	145x24x80 (cm)
Max Load	265lb (120kg)
Package Weight	62.3lb
E Bike Weight	49.3lb
Max Speed	20MPH
Battery/Charger	Input 100-240V50/60Hz AC Plug;Output 54.6V2A DC2.1
Pedal-Assist Mode	Approx 24.8-31mile (40-50km)
Pure Electric Mode	Approx 17.3-20.5mile (28-33km)
Max Angle of Climb	14 degrees
Charging Time	4-6 hours
Tire Pressure	35-65p.s.L
Bell/Horn	Bell
USB Charging Port	Output Voltage 5V1A
Frame Material	6061 Aluminum Alloy
IP Level	IpX4



Get To Know Your E-Bike





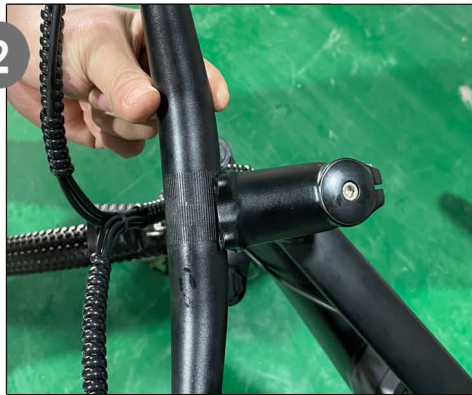
Installing the Handlebar

1



Use tools to loosen screws from fasteners.

2



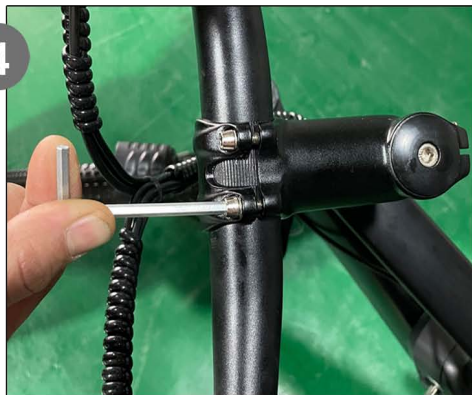
Adjusting the position of handlebar.

3



fastening the handlebar

4



Tighten the screws



Adjusting the Seat Tube



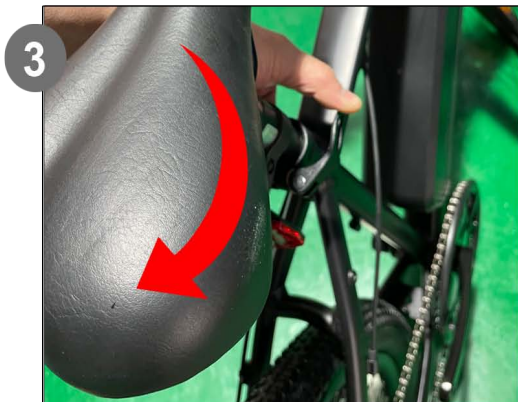
1

Push the saddle down.



2

Open the folder of the seat tube.



3

Adjust and rotate the seat.



4

Finally Lock the folder.



Mounting Pedal

1



Please check the Land R marks on.

2



Take the wrench from the tool box.

3



R means it should be install in right side
L means it should be install in left side.

4



Tighten the nut counterclockwise.



Installing the front wheel



Fixed well front fork.



The front fork is aligned to both ends of the bearing. The disc brake is on the left.



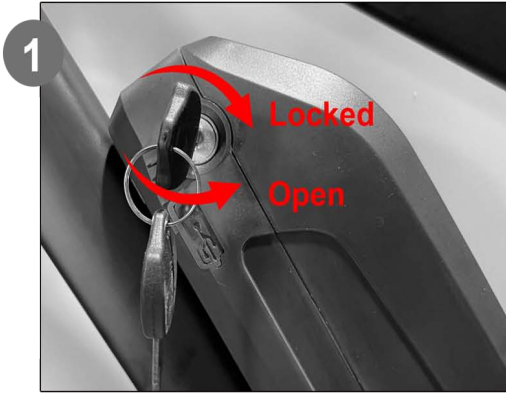
Install the quick release and nuthen tighten well



Twist the wrench upward and check the operation of the wheel.



Removing the Battery



Open the battery key.



Take out the battery



After taking out battery.



Remove the battery.



Charge Your E-Bike: Method 1

Before using the electric bike, you must fully charge the battery.



1. Locate the charging port on the left side of the frame on the removable battery
2. Plug the charger into a power supply
3. A red light indicates the battery is charging, green indicates the battery is full
4. Charging Time: 6-7 hours



Charge Your E-Bike: Method 2



Remove the battery charger from the e-bike (as detailed on page 13)



Locate the charging port near the top of the battery.



A red light indicates the battery is charging, green indicates the battery is full

LED Console S810

User Manual V.2014



Model: 810-C

Operating Voltage: DC24V / DC36V / DC48V

Functions: Power Switch (Electric On/Off)

Battery Level Indicators

Three-Gear Motor Power Control

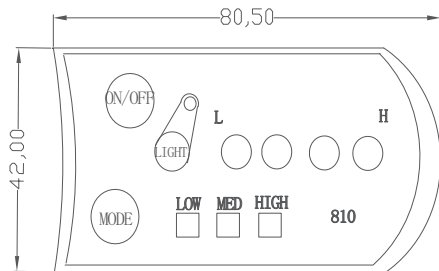
Light Switch

Auto-Hibernation after 10min Standby

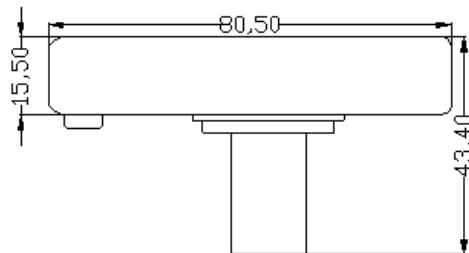
1. Exterior Parameters

Shell Material: ABS

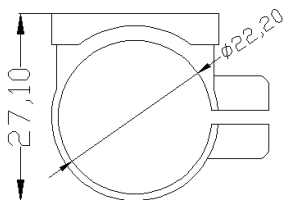
Working Temperature: -20 °C -60 °C with guaranteed mechanical performance.



Front View



Side View



Side View of the Supporter Ring


2. User Instructions

Connections:

1. Connect the red wire to the positive.
2. Connect the black wire to the negative.
3. Connect the blue wire to the controller of the electric on/off switch.
4. Connect the green wire to the controller of the motor power output control wire.
5. Connect the yellow wire to the positive.
6. Connect the white wire to the negative.

1. Start



Press the  button to power on the console, and the blue wire connected to it will deliver the same output voltage as the power source. The maximum operating current of the blue wire can reach 200mA.

2. Battery Level Indicators

The LED indicators



will show full bars when the

battery is fully charged. The LED indicator



will start blinking

continuously at low battery, which indicates a timely battery recharge.

3. Motor Power Output Control



Please refer to this section as the control and indicating of the motor power output level.

The default level of boot is 0, and the corresponding output voltage is 0V.



The control signal of the motor power level will shift at each press of the mode button .





After pressing the mode button for the first time, the control indicator LOW will light up, and the corresponding output voltage is 1V.

The control indicator will change from LOW to MED after pressing the mode button for the second time, where the corresponding output voltage is 2V.

The control indicator will change from MED to HIGH after pressing the mode button for the third time, where the corresponding output voltage is 3V.

When the mode button is pressed for the fourth time, all indicators are off and the output power will be reset to 0V.

4. Light Control

Power on the console and press the light button  , the yellow wire will give a positive voltage output (power input) and the light indicator  will be on. When pressing the light button  for the second time, the voltage output of the yellow wire will be cut off and the light indicator  will be off.



Troubleshooting & Warranty

We frequently update our user manuals at **GOTRAX.com**, and reserve the rights to update and change manuals online.

Please contact our customer service team if you are experiencing problems or need more detailed information. They can be reached at **GOTRAX.com**

1. Users should operate in accordance with the product manual. In case of any performance fault caused by production quality, the company shall perform the obligations of the three guarantees in accordance with the provisions of relevant laws and regulations of the state.
2. The company is still responsible for the after-sales service of the faults beyond three guarantees and the major components in the three guarantees, but there will be a cost for repair.
3. If the battery replacement is over the warranty time, our company will supply the battery at factory price. To ensure safety, and avoid pollution.

Visit **<https://gotrax.com/pages/support>** for assistance and troubleshooting or email our Customer Service Reps at **[support@gotrax.com!](mailto:support@gotrax.com)**



WWW.GOTRAX.COM

#RideGOTRAX





GOLABS, INC

GOTRAX.com
2201 Luna Rd.
Carrollton, TX 75006